



**Government of Nepal**  
**Ministry of Agriculture, Forest and Environment**  
**Department of Hydrology and Meteorology**  
**Climate Division (Climate Analysis Section)**  
Babarmahal, Kathmandu

April 20, 2026

**Preliminary Precipitation and Temperature Summary**  
**February 2026.**

### **Highlights**

February 2026 experienced below-normal precipitation, with a monthly average precipitation of 4.2 mm against the climatological normal of 28.2 mm (1991-2020), amounting to 14.9% of normal. Almost all parts of the country experienced above normal maximum and minimum temperature in this month.

### **Synoptic Sequence**

During February 2026, Nepal's weather was predominantly governed by the persistence of westerly winds and intermittent westerly disturbances (WDs) traversing the country. The Arctic Oscillation (AO) index showed a strongly negative value of  $-2.05$ , indicative of a weakened polar vortex and an equatorward displacement of the polar jet, which typically promotes the intrusion of cold, dry continental air masses over the South Asian region. However, the North Atlantic Oscillation (NAO) was positive at  $+0.68$ , which, in combination with the negative AO, modulated the intensity and track of westerly disturbances, limiting their moisture uptake before reaching Nepal. The ENSO state remained neutral throughout the season, the Oceanic Niño Index (ONI) for DJF 2025/26 recorded an anomaly of  $-0.37$ , transitioning toward near-neutral with  $-0.15$  in JFM 2026, while the NINO 3.4 Sea Surface Temperature (SST) for February stood at  $26.48^{\circ}\text{C}$  with an anomaly of  $-0.27^{\circ}\text{C}$ . The Indian Ocean Dipole (IOD), as measured by the Dipole Mode Index (DMI), showed a gradually increasing positive phase throughout the month, rising from  $+0.59$  (26 January to 1 February) to  $+0.46$  (2-8 February), then climbing steadily through  $+0.53$  (9-15 February),  $+0.63$  (16-22 February),  $+0.69$  (23 February-1 March), and reaching  $+0.86$  (2-8 March). At the synoptic scale, the subtropical westerly jet was positioned over Nepal with a jet core speed of  $43.9$  m/s at  $28^{\circ}\text{N}$  at 250 hPa, while at 850 hPa the relative humidity averaged 49.9% and specific humidity was  $5.28$  g/kg, reflecting dry lower-tropospheric conditions that limited convective and orographic precipitation. Fog and mist were widespread in Terai lowlands and valley areas throughout the month, particularly during morning hours. The most notable precipitation events occurred in the last week of the month. The suppressed precipitation, combined with the positive phase of the IOD, neutral ENSO, and reduced cloud cover, contributed to anomalously high maximum and minimum temperatures across much of the country, with a mean maximum temperature anomaly of approximately  $+0.8^{\circ}\text{C}$  and a positive minimum temperature anomaly recorded for the seventh consecutive February since 2020.

### **Precipitation**

During February 2026, most parts of the country received less than 25 mm of precipitation, except for an isolated north-eastern part of Koshi Province and few stations of Gandaki Province, where precipitation amounts reached  $>25$  mm. Madhesh Province, Lumbini Province, most parts of Karnali and Bagmati Provinces recorded below 5 mm Precipitation (Figure 1).



Government of Nepal  
Ministry of Agriculture, Forest and Environment  
Department of Hydrology and Meteorology  
Climate Division (Climate Analysis Section)  
Babarmahal, Kathmandu

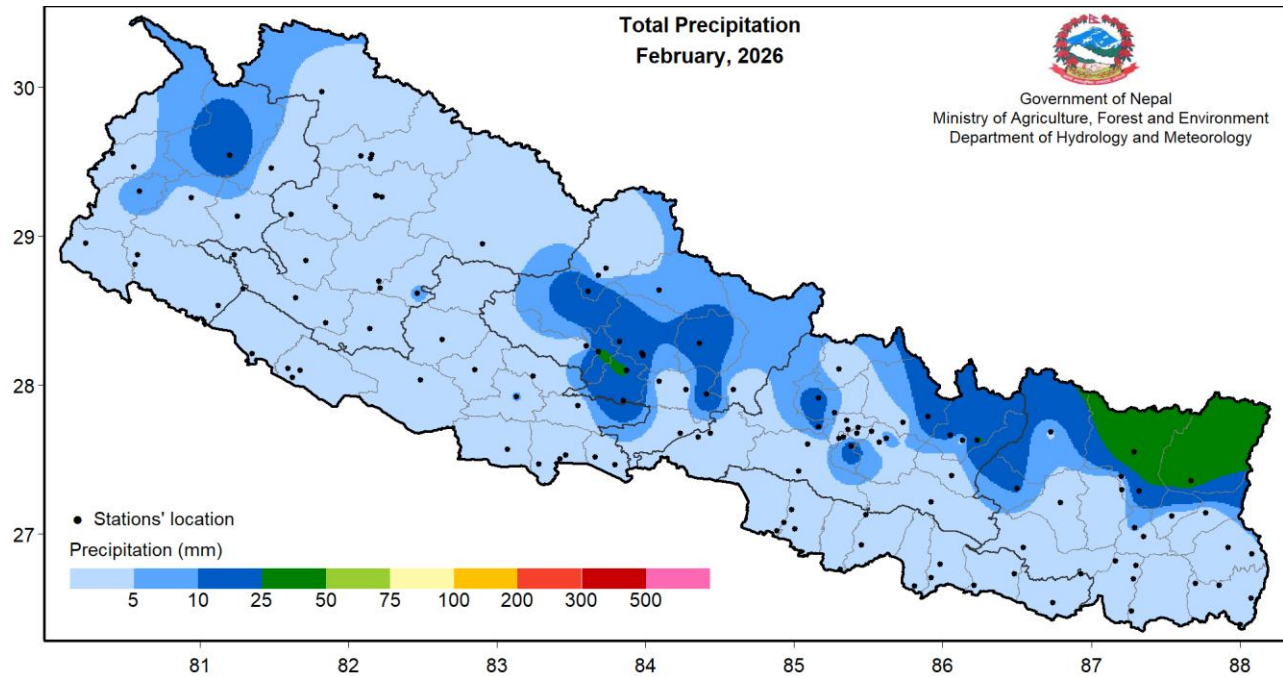


Figure 1: Total precipitation in February 2026

Almost all parts of the country recorded below normal precipitation except for a very few isolated parts of Koshi Province where Normal to above normal Precipitation was recorded. Madhesh Province, Lumbini Province, Karnali Province and Sudurpashchim Province recorded below 30% of normal precipitation whereas very few isolated parts of Gandaki Province, Bagmati Province and Koshi Province recorded above 50% to 125% of normal Precipitation (Figure 2).

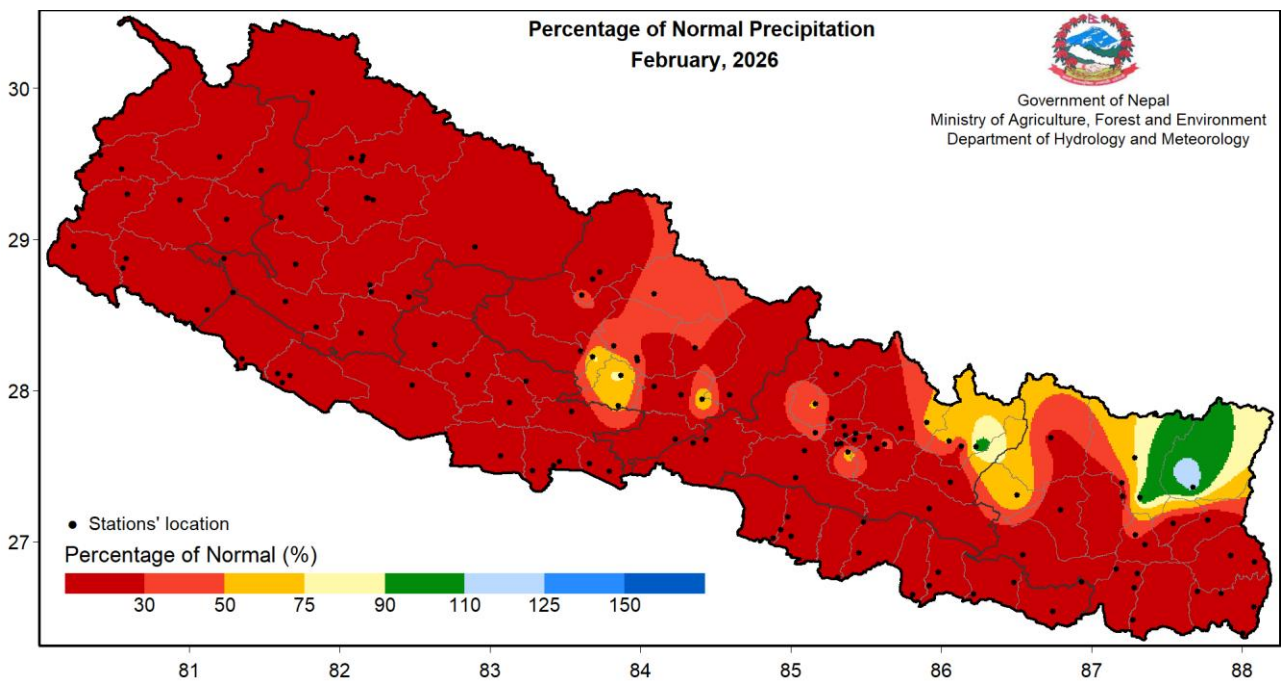


Figure 2: Percentage of normal precipitation in February 2026



Government of Nepal  
Ministry of Agriculture, Forest and Environment  
Department of Hydrology and Meteorology  
Climate Division (Climate Analysis Section)  
Babarmahal, Kathmandu

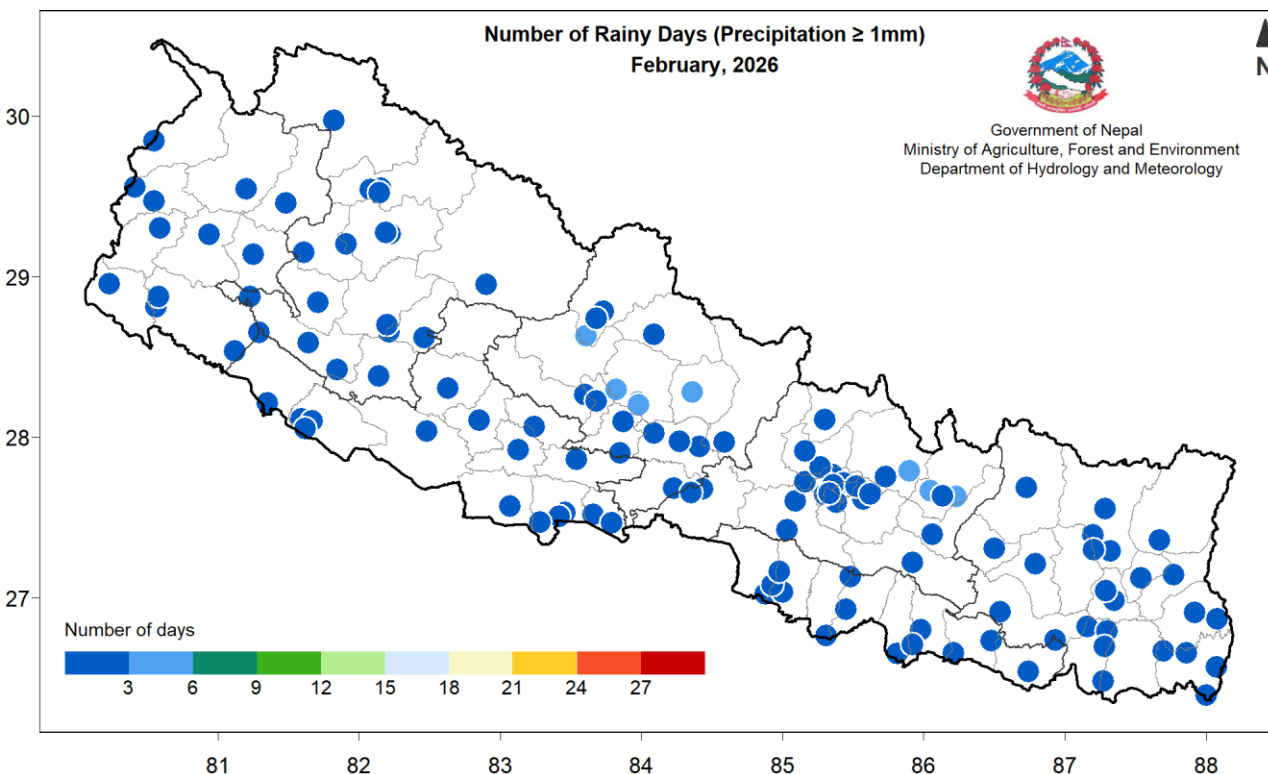


Figure 3: Number of Rainy days ( $\geq 1\text{mm}$ ) during February 2026

Num station of Sankhuwasabha district recorded the highest daily precipitation of 35.5 mm on 25<sup>th</sup> February and the highest monthly precipitation of 49.5 mm. 52 stations among 126 stations recorded 0 mm monthly precipitation (Annex 1). Based on data from 126 stations, Nepal received 14.9% of the normal precipitation during this month. Taplejung station of Taplejung district recorded the highest percentage of normal precipitation (118.28 %) and this is the only station recording above normal precipitation. Chainpur station and Jiri station recorded 105.1% and 100.8% of Normal precipitation respectively whereas remaining stations over Nepal recorded below normal precipitation (i.e. < 90% of Normal).

The temporal distribution of monthly cumulative average of daily precipitation shows that precipitation remained below normal throughout the month. (Figure 4). The highest February precipitation since 1981 was observed in 2007. Since, 1981 February 2026 is the 4<sup>th</sup> lowest precipitation year followed by 2006 (3<sup>rd</sup>), 1999 (2<sup>nd</sup>) and 2017 (1<sup>st</sup>) (Figure 5).



**Government of Nepal**  
**Ministry of Agriculture, Forest and Environment**  
**Department of Hydrology and Meteorology**  
**Climate Division (Climate Analysis Section)**  
 Babarmahal, Kathmandu

**Monthly Precipitation Monitoring**  
**February, 2026**

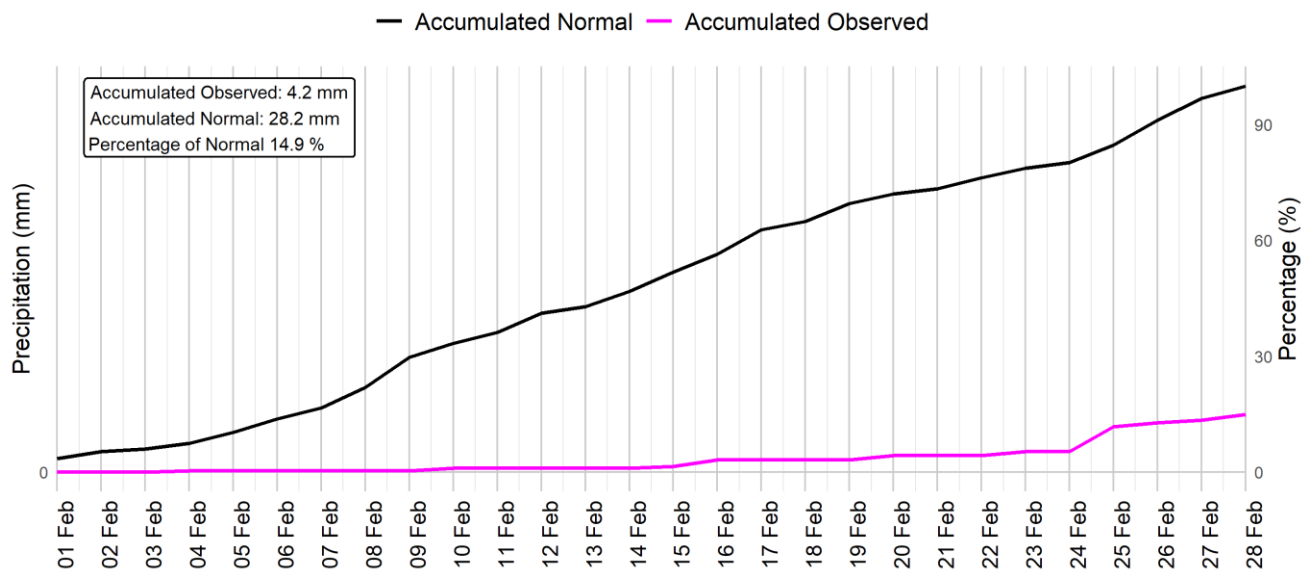


Figure 4: Cumulative average of daily normal and observed precipitation during February 2026.

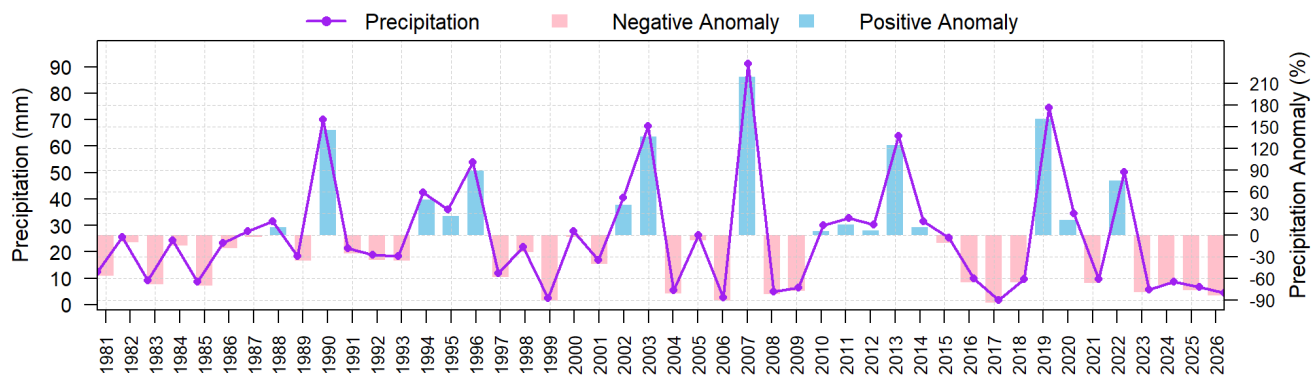


Figure 5: All Nepal monthly total precipitation of February from 1981 to 2026 (average of 104 stations)



## Maximum Temperature

The monthly average maximum temperature of Terai remained above 24°C, while most of the northern part of country recorded below 6°C (Figure 6).

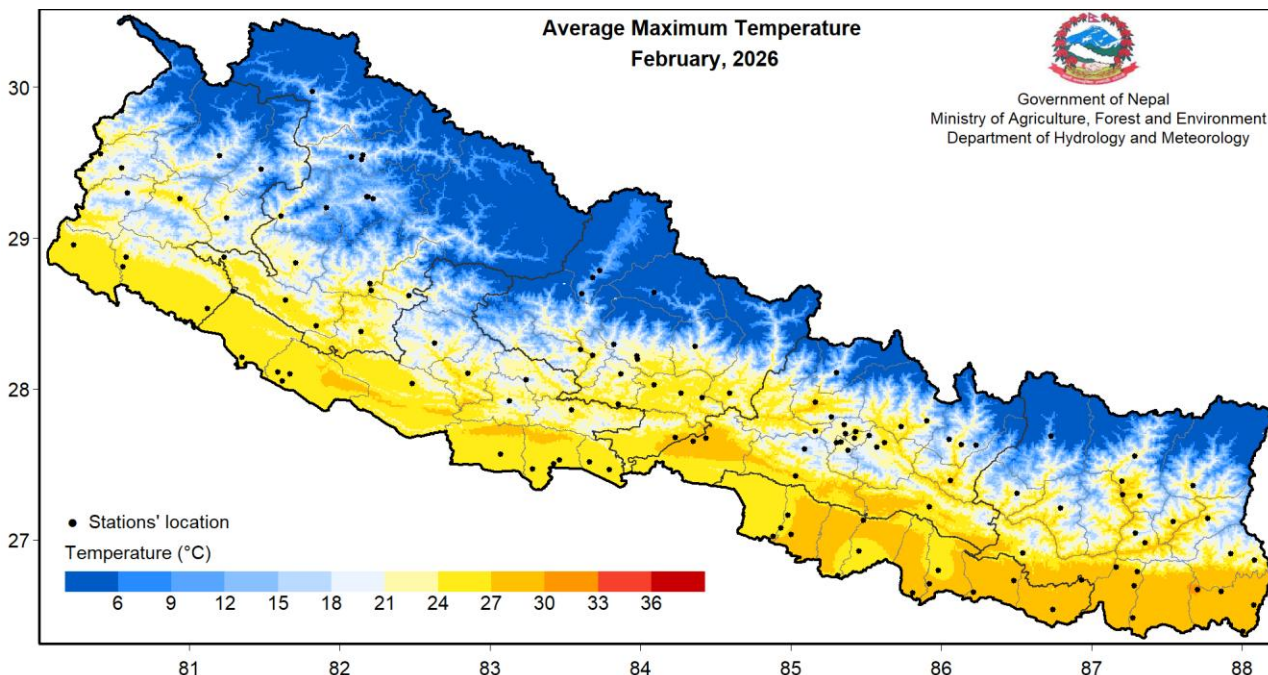


Figure 6: Maximum Temperature in February 2026.

Damak station of Jhapa district and Humde station of Manang district recorded the highest and lowest monthly maximum temperature of 30.4°C and 9.2°C respectively. Similarly, the highest monthly anomaly of 6.6°C was recorded at 'Kanyam Tea Estate' station of Illam district and the lowest of -1.9°C was recorded at Mangalsen station of Achham district (Annex 1).

The highest daily maximum temperature of 33.5°C was recorded at Damak station of Jhapa district on 20<sup>th</sup> February while the lowest daily maximum temperature of 4.2°C was recorded at Humde station of Manang district on 3<sup>rd</sup> February.



**Government of Nepal**  
**Ministry of Agriculture, Forest and Environment**  
**Department of Hydrology and Meteorology**  
**Climate Division (Climate Analysis Section)**  
Babarmahal, Kathmandu

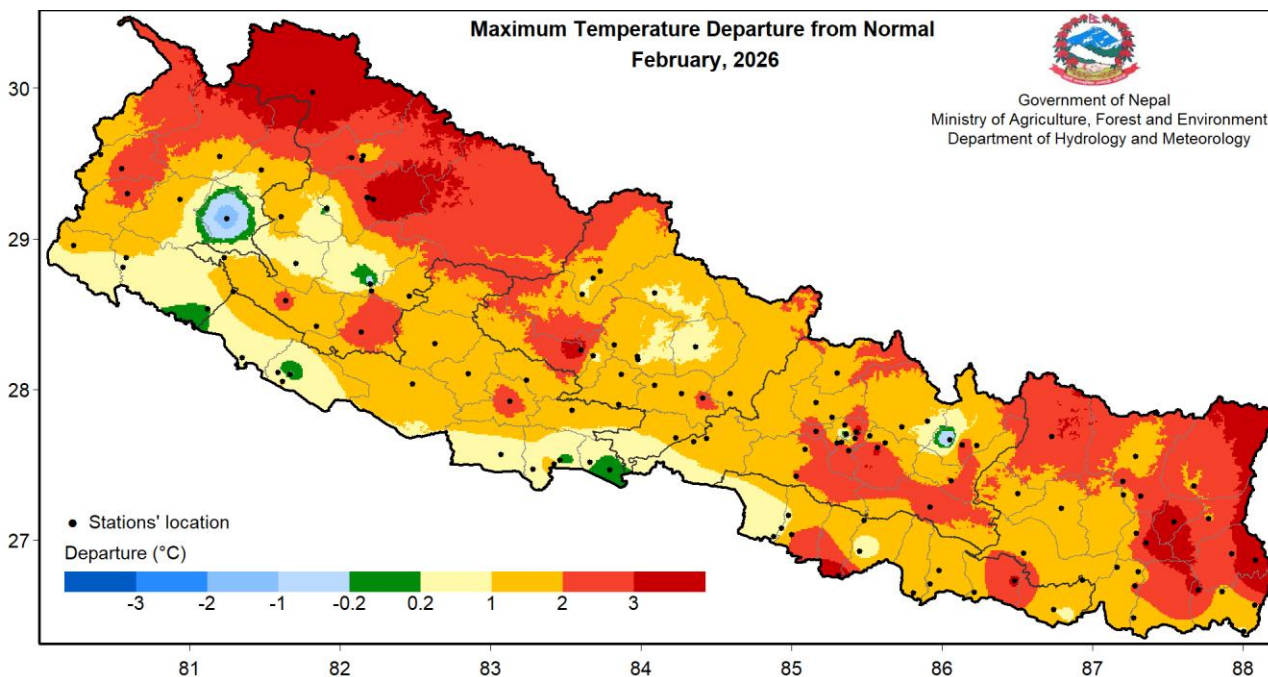


Figure 7: Departure from normal maximum temperature in February 2026.

Almost all parts of the country recorded above normal temperature. Few isolated parts of Karnali Province and Koshi Province showed highest departure from normal (maximum of +3 to above) (Figure 7). Country showed the positive anomaly of maximum temperature during February 2026. The average monthly temperature observed this year is higher than that observed in 2025 and it shows the deviation of about 1.5 °C from the climatological normal (Figure 8).

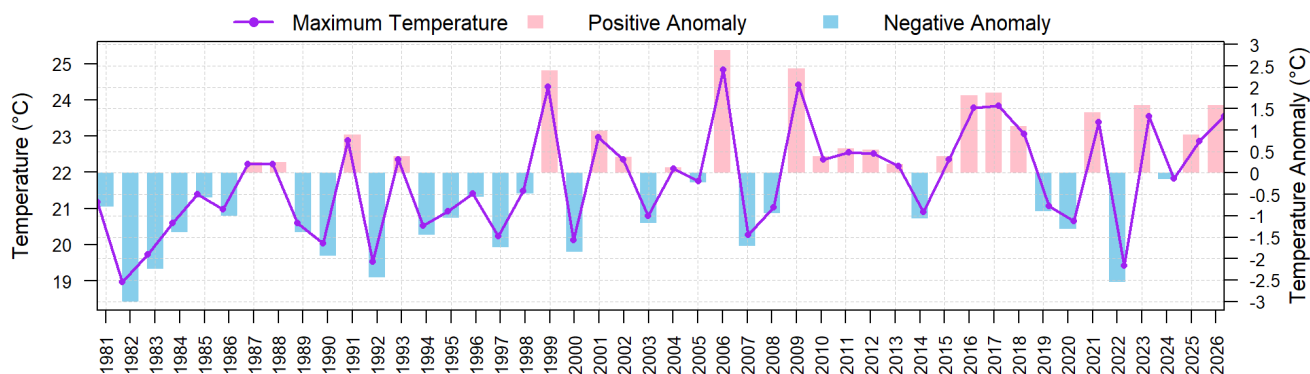


Figure 8: Monthly average maximum temperature anomaly of February from 1981 to 2026 of 63 stations (average of monthly average maximum temperature at stations having long term data)

### Minimum Temperature

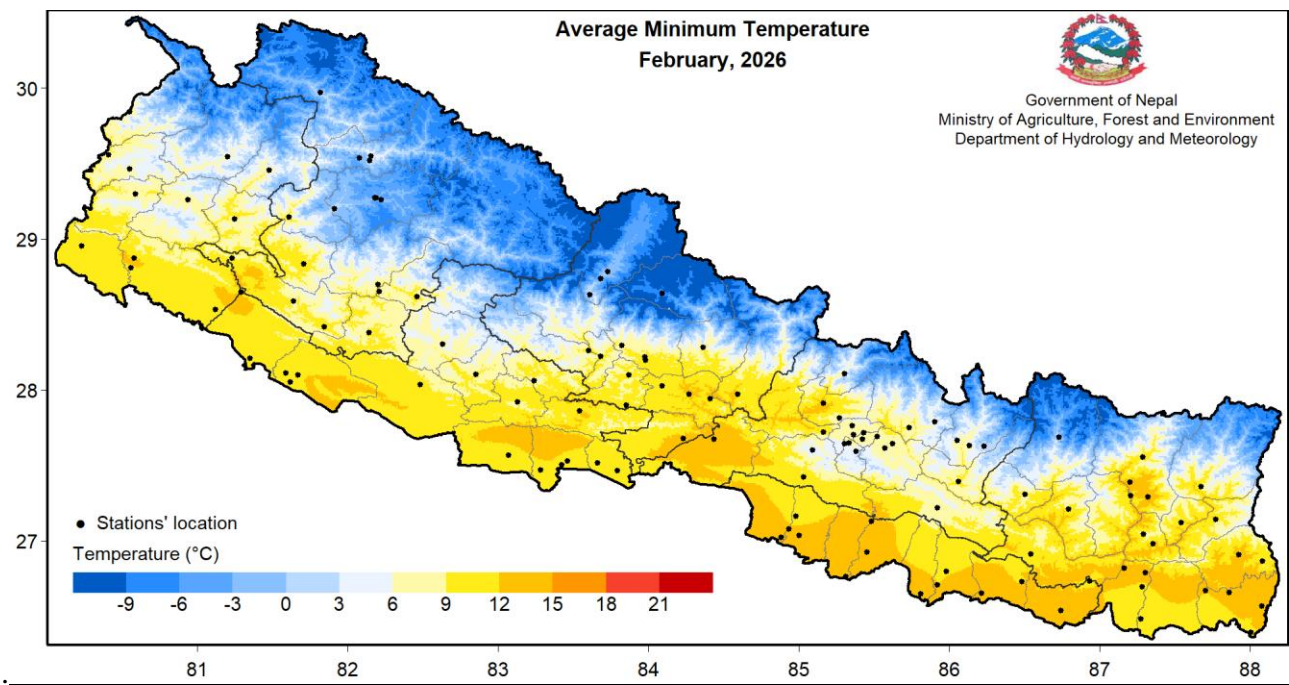
The minimum temperature in most part of Terai remained between 9°C and 15°C. In most parts of Himalayan region, the minimum temperature remained below 6°C and reached below -9°C in some parts (Figure 9). In almost all parts of the country above normal minimum temperature was recorded



**Government of Nepal**  
**Ministry of Agriculture, Forest and Environment**  
**Department of Hydrology and Meteorology**  
**Climate Division (Climate Analysis Section)**  
Babarmahal, Kathmandu

except few isolated areas of Gandaki Province, Bagmati Province, Madhesh Province and Sudurpashchim Province (Figure 10).

Dharan Bazar station and Humde station of Sunsari district and Manang district recorded the highest and lowest monthly minimum temperature of 14.7°C and -7.2°C respectively. Similarly, the highest monthly anomaly of 4.5°C was recorded at Chainpur (East) station and the lowest anomaly of -2.3°C was recorded at Sindhuli Madhi station (Annex 1). The highest daily minimum temperature of 18.2°C was recorded at Bharatpur station of Chitwan district on 25<sup>th</sup> February, while the lowest daily minimum temperature of -11.6°C was recorded at Humde station of Manang district on 5<sup>th</sup> February (Annex 1).



*Figure 9: Average Minimum Temperature in February 2026.*



**Government of Nepal**  
**Ministry of Agriculture, Forest and Environment**  
**Department of Hydrology and Meteorology**  
**Climate Division (Climate Analysis Section)**  
 Babarmahal, Kathmandu

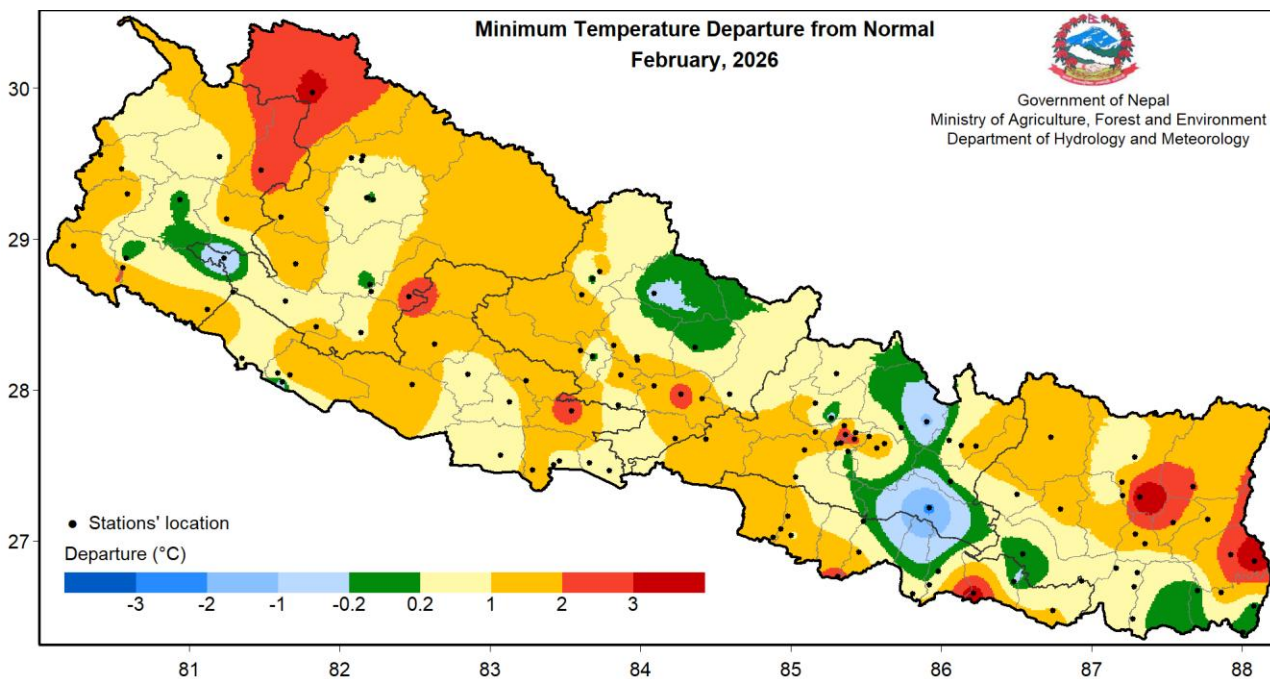


Figure 10: Departure from normal minimum temperature in February 2026.

Overall Nepal recorded positive minimum temperature anomaly in February 2026 (Figure 11).

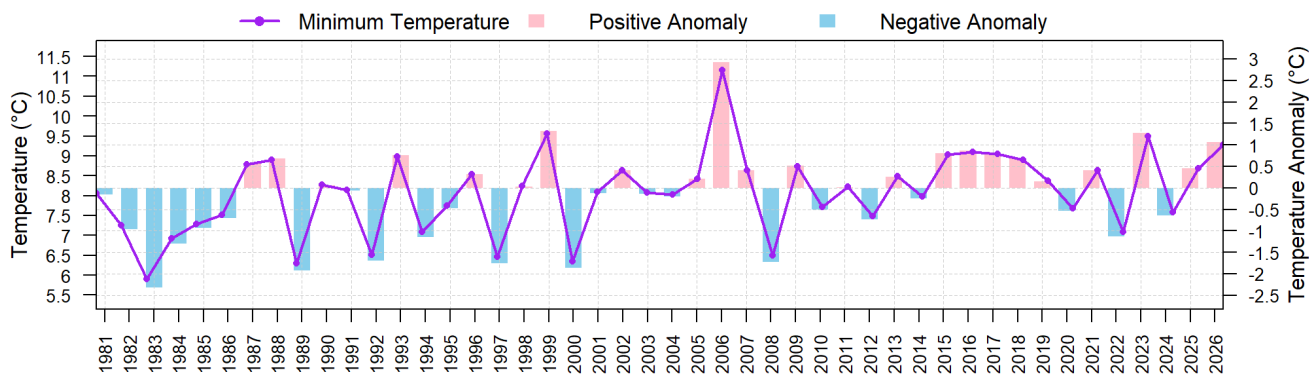


Figure 11: All Nepal monthly average minimum temperature of February from 1981 to 2026 of 62 stations (average of monthly average minimum temperature at stations having long term data).

**Diurnal Temperature Range**

Most parts of the country experienced a diurnal temperature range (DTR) below 20°C. However, three stations, Dipal Gaun, Jumla and Jumla Airport recorded the diurnal temperature of 22.1°C, 21.0°C and 20.7°C respectively. Dipal Gaun station recorded the highest DTR of 22.1°C whereas Illam Tea Estate station recorded the lowest DTR of 8.6°C. The DTR values shown in the figure represent the average of daily DTRs (Figure 12).



Government of Nepal  
Ministry of Agriculture, Forest and Environment  
Department of Hydrology and Meteorology  
Climate Division (Climate Analysis Section)  
Babarmahal, Kathmandu

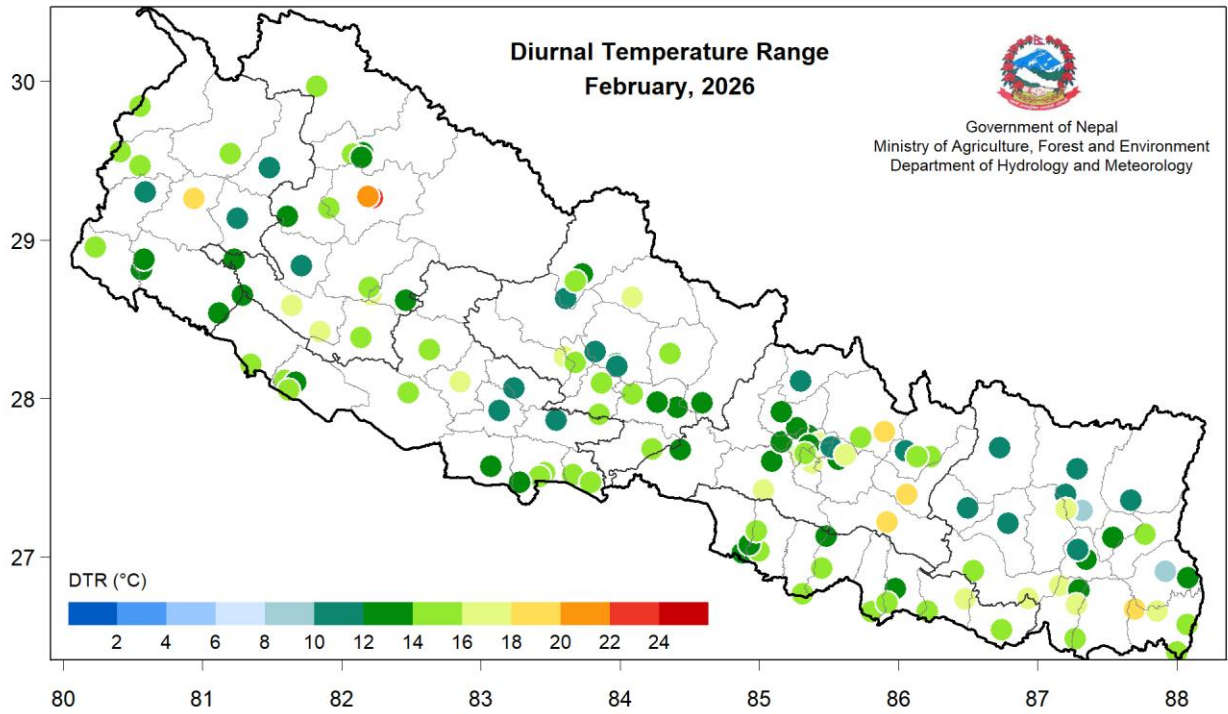


Figure 12: Station plot of diurnal temperature range for February, 2026.



**Government of Nepal**  
**Ministry of Agriculture, Forest and Environment**  
**Department of Hydrology and Meteorology**  
**Climate Division (Climate Analysis Section)**  
 Babarmahal, Kathmandu

### Historical record break

Talcha station of Mugu district recorded all time lowest minimum temperature this month (Table 1).

*Table 1: List of stations recording all-time record breaking lowest Minimum Temperature observed in February 2026.*

S.N.	Station Name	District	Record break daily Minimum Temperature (°C)/Date	Previous Lowest Temperature (°C)/Date
1	Talcha	Mugu	-2.3/2026-02-04	-1.3/2025-11-14

*Table 2: List of stations breaking the monthly lowest daily minimum temperature in February 2026.*

S.N.	Station Name	District	Record break minimum temperature (°C)/Date	Previous lowest minimum temperature (°C)/Date
1	Pusma Camp	Surkhet	0.3/2026-02-18	0.4/2016-02-04

*Table 3: List of stations breaking the monthly highest daily maximum temperature in February 2026.*

S.N.	Station Name	District	Record break maximum temperature (°C)/Date	Previous highest maximum temperature (°C)/Date
1	Lukla Airport	Sankhuwasabha	15.3/2026-02-18	15.2/2024-02-20
2	Chandragadi Airport	Jhapa	31.8/2026-02-19	31.3/2023-02-17
3	Kanyam Tea Estate	Illam	27.5/2026-02-21	23.6/2005-02-23
4	Kalaiya	Bara	31.0/2026-02-20	30.5/2021-02-28
5	Hardinath	Dhanusa	30.5/2026-02-18	30.4/2016-02-29

### References

Source	Link
ERA5 Reanalysis (Hersbach et al. 2020)	<a href="https://cds.climate.copernicus.eu">https://cds.climate.copernicus.eu</a>
NOAA ONI Index	<a href="https://www.cpc.ncep.noaa.gov/data/indices/oni.ascii.txt">https://www.cpc.ncep.noaa.gov/data/indices/oni.ascii.txt</a>
NOAA AO Index	<a href="https://www.cpc.ncep.noaa.gov/products/precip/CWlink/daily_ao_index/monthly.ao.index.b50.current.ascii">https://www.cpc.ncep.noaa.gov/products/precip/CWlink/daily_ao_index/monthly.ao.index.b50.current.ascii</a>
NOAA NAO Index	<a href="https://www.cpc.ncep.noaa.gov/products/precip/CWlink/pna/norm.nao.monthly.b5001.current.ascii.table">https://www.cpc.ncep.noaa.gov/products/precip/CWlink/pna/norm.nao.monthly.b5001.current.ascii.table</a>
NOAA ERSSTv5 Niño	<a href="https://www.cpc.ncep.noaa.gov/data/indices/ersst5.nino.mth.91-20.ascii">https://www.cpc.ncep.noaa.gov/data/indices/ersst5.nino.mth.91-20.ascii</a>



**Government of Nepal**  
**Ministry of Agriculture, Forest and Environment**  
**Department of Hydrology and Meteorology**  
**Climate Division (Climate Analysis Section)**  
**Babarmahal, Kathmandu**

**Annex 1: Monthly precipitation and temperature data for February 2026**

S.N.	Station	Latitude	Longitude	Elevation	Precipitation							Temperature										
					Total (mm)	Normal	% of Normal	No. of Rainy Days				24hr Highest (mm)/Date	Maximum			Minimum						
								≥1.0mm	≥10.0mm	≥25.0mm	≥50.0mm		Average (°C)	Normal	Dep. form normal (°C)	Highest temp. / Date	Average (°C)	Normal	Dep. form normal (°C)	Lowest temp. / Date	No. of days with Tx>30°C	DTR (°C)
<b>Koshi Province</b>																						
1	Biratnagar Airport	26.48	87.27	72	0	11.4	0.0	0.0	0.0	0.0	0.0	NR	27.7	26.3	1.4	31/21	11.8	11.5	0.3	10/6	5	16
2	Chainpur (Bajhang)	27.29	87.32	1277	18.92	18	105.1	2.0	1.0	0.0	0.0	17.2/25	23.1	20.7	2.4	25.5/18	13.1	8.6	4.5	9/2	0	10
3	Chandragadi Airport	26.57	88.08	95	0	3.5*	0.0	0.0	0.0	0.0	0.0	NR	28.3	26.5*	1.8	31.8/19	12.8	12.9*	-0.2	10.6/6	5	16
4	Chatara	26.82	87.16	105	0	12.5	0.0	0.0	0.0	0.0	0.0	NR	29.3	27.6*	1.7	33/21	13.2	12.4*	0.8	11/6	11	16
5	Damak	26.67	87.70	119	0	13.2	0.0	0.0	0.0	0.0	0.0	NR	30.4	27.1*	3.3	33.5/20	12.1	12.3*	-0.2	10/12	19	18
6	Dhankuta	26.98	87.35	1192	1.53	15.4	9.9	1.0	0.0	0.0	0.0	1.5/25	24.0	20.4	3.6	26.7/18	10.4	9.2*	1.2	9/1	0	14
7	Dharan Bazar	26.79	87.30	310	0	14.2	0.0	0.0	0.0	0.0	0.0	NR	27.2	26*	1.2	31.3/21	14.7	14.3*	0.4	12/6	4	13
8	Diktel	27.21	86.79	1612	0.02	15	0.1	0.0	0.0	0.0	0.0	0.01/21	20.2	18.6*	1.6	24/20	9.6	8.3*	1.3	7.8/6	0	11
9	Gaida (Kankai)	26.66	87.86	107	0	12.1	0.0	0.0	0.0	0.0	0.0	NR	28.5	27	1.5	32.5/19	12.5	10.7	1.8	10/7	7	16
10	Ilam Tea Estate	26.91	87.92	1208	0.1	13.6	0.7	0.0	0.0	0.0	0.0	0.1/26	21.2	18.9	2.3	24/20	12.6	9.9	2.7	11/6	0	9
11	Kanyam Tea Estate	26.87	88.08	1570	3	20.1	14.9	1.0	0.0	0.0	0.0	2.5/26	22.4	15.8	6.6	27.5/21	9.7	5.8*	3.9	7.5/7	0	13
12	Kechana	26.40	88.00	71	0	7.5*	0.0	0.0	0.0	0.0	0.0	NR	27.7	26.8*	0.9	31.6/19	11.8	11.8	0.0	9.4/6	5	16
13	Khadbari	27.39	87.20	1064	5.41	17.6*	30.7	3.0	0.0	0.0	0.0	2.2/27	23.4	20.9*	2.5	26.6/20	12.3	10.9*	1.4	10.5/25	0	11
14	Lukla Airport	27.69	86.73	2786	4.01	17.2*	23.3	2.0	0.0	0.0	0.0	1.7/28	11.6	8.9*	2.7	15.3/18	-0.1	-1.6*	1.5	-3.6/5	0	12
15	Num	27.56	87.29	1494	49.5	64.8	76.4	3.0	1.0	1.0	0.0	35.5/25	19.8	18.5*	1.3	24/20	8.9	8.3*	0.6	7/6	0	11
16	Okhakhunga	27.31	86.50	1731	11.01	14.9	73.9	2.0	0.0	0.0	0.0	9/25	19.9	18.1	1.8	23.6/20	8.0	7.1	0.9	6.3/6	0	12
17	Pakhribas	27.05	87.29	1720	6.41	16.7	38.4	1.0	0.0	0.0	0.0	6.2/25	18.7	16.9	1.8	21.5/20	8.6	6.9	1.7	6.5/7	0	10
18	Phidim	27.14	87.77	1157	0	16.3	0.0	0.0	0.0	0.0	0.0	NR	24.3	22.4	1.9	28/21	10.1	9*	1.1	8.6/1	0	14
19	Taplejung	27.36	87.67	1744	31.7	26.8	118.3	3.0	1.0	1.0	0.0	28.6/25	18.6	16.6	2.0	21.3/18	8.3	6.2	2.1	6.8/5	0	10
20	Tarahara	26.70	87.28	120	0	13	0.0	0.0	0.0	0.0	0.0	NR	27.9	25.7	2.2	31.3/19	11.1	10.5*	0.6	9.2/7	4	17
21	Terhathum	27.12	87.54	1525	1.11	19.6	5.7	0.0	0.0	0.0	0.0	0.9/26	22.9	19.1	3.8	26/20	9.2	7.1	2.1	8/1	0	14
22	Tumlingtar	27.30	87.20	477	1.13	8.9	12.7	1.0	0.0	0.0	0.0	1.1/27	27.3	25.8*	1.5	31/21	11.1	10.3*	0.8	9/13	5	16
23	Udayapur Gadhi	26.91	86.54	469	0	12.3	0.0	0.0	0.0	0.0	0.0	NR	25.8	24.1	1.7	29.5/18	11.5	11.7	-0.2	8.5/5	0	14
<b>Madhesh Province</b>																						
1	Birganj	27.02	84.88	67	0.0	13.7	0	0	0	0	0	NR	27.3	26.6*	0.7	31/18	13.4	11.6*	1.8	11/1	4	13.9
2	Gaur	26.77	85.31	77	0.0	10.5	0	0	0	0	0	NR	27.0	22.8	4.2	31.8/20	12.7	10.4*	2.3	8.9/10	3	14.3
3	Hardinath	26.80	85.98	93	0.0	13*	0.0	0	0	0	0	NR	26.0	24.8*	1.2	30.5/18	11.9	11.7*	0.2	9.3/6	1	14
4	Jalesor	26.65	85.81	68	0.0	4.1	0	0	0	0	0	NR	27.4	25.7	1.7	31/18	12.9	12.2*	0.7	10/1	7	14.5
5	Janakpur Airport	26.71	85.92	76	0.0	8.3	0	0	0	0	0	NR	28.0	26.3	1.7	31.4/18	12.0	11.7*	0.3	8.6/6	12	16
6	Kalैया	27.04	85.00	100	0.0	17	0	0	0	0	0	NR	27.7	25.5*	2.2	31/20	12.7	11.8	0.9	10/2	7	15
7	Karmaiya	27.13	85.48	139	0.0	10.2	0	0	0	0	0	NR	27.9	26.4	1.5	32/20	14.0	13.8	0.2	10/8	6	13.9
8	Lahan	26.73	86.48	110	0.0	11	0	0	0	0	0	NR	29.2	25.9*	3.3	33/18	11.9	12.2*	-0.3	9/8	14	17.3
9	Manusmara	26.93	85.45	90	0.0	11.6	0	0	0	0	0	NR	26.2	25.8	0.4	30.2/18	12.0	10.9*	1.1	8.5/2	2	14.2
10	Parwanipur	27.08	84.93	87	0.0	13.1	0	0	0	0	0	NR	26.0	25.5	0.5	29.5/18	12.2	10.8	1.4	9.5/9	0	13.8
11	Phattepur	26.74	86.93	83	0.0	13.8	0	0	0	0	0	NR	28.7	27.7	1.0	32/19	12.0	11.5	0.5	10/5	8	16.8
12	Rajbiraj	26.54	86.74	68	0.0	9.1	0	0	0	0	0	NR	27.7	26.7	1.0	31.3/19	13.6	12.5*	1.1	11.6/9	5	14.1
13	Simara Airport	27.16	84.98	137	0.0	15.7	0	0	0	0	0	NR	26.7	25.9	0.8	31.2/20	11.5	9.9*	1.6	8/8	2	15.2
14	Siraha	26.66	86.21	63	0.0	10.1	0	0	0	0	0	NR	28.0	26.5*	1.5	31/18	12.9	9	3.9	10/9	9	15.1
<b>Bagamati Province</b>																						
1	Bahrabise	27.79	85.90	884	16.2	28.9	56.06	4	0	0	0	6.7/20	25.5	24.5*	1.0	28.8/28	6.3	7.6*	-1.3	5.1/3	0	19.3
2	Bhaktapur	27.68	85.42	1315	0.0	22.1	0	0	0	0	0	NR	24.0	22.1*	1.9	26.5/20	7.6	4.5*	3.1	5/1	0	16.4
3	Bharatpur	27.68	84.43	216	0.0	28.4*	0.0	0	0	0	0	NR	27.5	26.3*	1.2	31.6/20	13.6	12*	1.6	10.2/1	2.0	13.9
4	Buddhanilakantha	27.76	85.35	1378	1.4	22.8*	6.1	1	0	0	0	1.4/25	21.6	19.7*	1.9	24.2/20	7.9	5.8*	2.1	/	0	13.7
5	Changu Narayan	27.72	85.43	1502	0.0	24.9	0.08	0	0	0	0	0.01/25	25.0	20.8*	4.2	28.2/25	7.9	7.2*	0.7	5/1	0	17.1
6	Charikot	27.67	86.05	1940	12.6	22.8	55.26	5	0	0	0	4.2/25	16.2	17.5*	-1.3	21.5/7	4.7	4.3*	0.4	2.5/7	0	11.5
7	Chautara	27.75	85.73	1552	1.5	20.5	7.317	1	0	0	0	1.5/27	22.7	21.5*	1.2	27.3/20	7.5	7.3*	0.2	5.6/1	0	15.3
8	Daman	27.60	85.09	2265	0.0	25.9*	0.0	0	0	0	0	NR	16.0	14.2*	1.8	18.3/21	3.8	2.7*	1.1	2/8	0	12.2



**Government of Nepal**  
**Ministry of Agriculture, Forest and Environment**  
**Department of Hydrology and Meteorology**  
**Climate Division (Climate Analysis Section)**  
**Babarmahal, Kathmandu**

S.N.	Station	Latitude	Longitude	Elevation	Precipitation								Temperature									
					Total (mm)	Normal	% of Normal	No. of Rainy Days				24hr Highest (mm)/Date	Maximum				Minimum					
								≥1.0mm	≥10.0mm	≥25.0mm	≥50.0mm		Average (°C)	Normal	Dep. form normal (°C)	Highest temp. / Date	Average (°C)	Normal	Dep. form normal (°C)	Lowest temp. / Date	No. of days with Tx>30°C	DTR (°C)
9	Dhulikhel	27.62	85.57	1543	2.5	24.4	10.2	1	0	0	0	2.5/27	20.8	17.5	3.3	23/20	7.1	5.6	1.5	5.5/2	0	13.7
10	Dhunchhe	28.11	85.30	1993	1.2	44.4	2.7	1	0	0	0	1.2/15	16.5	15*	1.5	18.7/18	4.8	4.4	0.4	2.7/5	0	11.7
11	Dhumbesi	27.72	85.16	991	12.0	24.8	48.4	1	1	0	0	12/25	24.7	21.9	2.8	27.5/20	11.4	10.2*	1.2	8.6/1	0	13.3
12	Godavari	27.59	85.38	1527	16.9	25.9	65.3	2	1	0	0	13.2/25	21.1	18.6	2.5	24/23	4.8	4.9	-0.1	2.5/6	0	16.3
13	Hetauda N.F.I.	27.42	85.03	452	0.0	20.9	0	0	0	0	0	NR	27.3	25.2	2.1	30.6/20	10.5	9.6	0.9	6.9/5	4	16.7
14	Jiri	27.63	86.23	1877	26.5	26.3	101	4	1	0	0	10.7/26	17.5	16.5	1.0	20/18	2.2	0.7*	1.5	-1.1/6	0	15.3
15	Kabre	27.63	86.13	1755	3.1	14.8*	20.9	1	0	0	0	2.3/25	22.4	18.9*	3.5	24.6/18	6.9	5.8	1.1	4.6/1	0	15.4
16	Kakani	27.81	85.27	2030	6.2	32	19.4	1	0	0	0	6.2/25	17.2	15.9	1.3	21/18	5.1	5.7*	-0.6	4/2	0	12.1
17	Kathmandu Airport	27.70	85.36	1337	0.0	23.6	0.08	0	0	0	0	0.01/25	21.0	22.1	-1.1	23.8/20	8.0	5.3	2.7	5.1/5	0	13
18	Khokana	27.64	85.30	1309	2.2	26.8	8.21	1	0	0	0	2.2/26	22.6	20.6*	2.0	25/24	4.8	3.3	1.5	2/1	0	17.7
19	Khumaltar	27.65	85.33	1334	3.1	22.8	13.6	1	0	0	0	2.3/25	22.4	20.3	2.1	24.6/18	6.9	4.4	2.5	4.6/1	0	15.5
20	Manthali	27.39	86.06	497	0.0	14.3	0	0	0	0	0	NR	29.0	27*	2.0	31.9/28	10.2	10.1	0.1	8.3/1	7	18.8
21	Nagarkot	27.69	85.52	2147	4.7	21.7	21.7	2	0	0	0	3.7/25	16.2	15.3	0.9	19.5/20	5.7	4.6*	1.1	4.4/8	0	10.6
22	Nuwakot	27.91	85.16	966	13.3	24.7	53.8	1	1	0	0	13.3/25	24.6	23.3	1.3	27.8/21	11.7	10.6*	1.1	9.4/1	0	13
23	Panchkhal	27.65	85.62	857	6.8	17.3	39.3	1	0	0	0	6.2/25	25.6	24.1	1.5	28.5/18	7.9	6.4	1.5	4.9/6	0	17.7
24	Rampur	27.65	84.35	189	0.0	19.8	0	0	0	0	0	NR	27.4	26.1	1.3	30/18		9.7*		/	1	0.0
25	Sindhuli Madhi	27.22	85.92	556	0.5	14.1	3.55	0	0	0	0	0.5/28	27.0	24.7*	2.3	30/18	7.4	9.7*	-2.3	5/1	2	19.6
<b>Gandaki Province</b>																						
1	Baglung	28.26	83.60	964	2.4	34.3	7.03	1	0	0	0	2.4/25	27.1	23.3	3.8	30.4/22	10.0	8.4	1.6	7.2/2	2	17.2
2	Bandipur	27.94	84.41	991	23.5	29.6	79.4	2	2	0	0	13/28	23.6	21.2*	2.4	25.5/18	10.6	9.1*	1.5	9/1	0	13
3	Chapakot	27.90	83.85	617	19.8	33.4	59.3	1	1	0	0	19.8/16	25.6	24.3	1.3	28.1/22	10.5	10.3	0.2	8.2/1	0	15.1
4	Damauli	27.97	84.27	347	0.0	31.7	0	0	0	0	0	NR	26.6	25.2*	1.4	29.7/23	12.8	10.2	2.6	11.4/25	0	13.8
5	Dumkauli	27.68	84.23	183	0.0	20	0	0	0	0	0	NR	27.4	26.2	1.2	32/20	12.5	11.4*	1.1	10.5/2	5	14.9
6	Gorkha	27.97	84.59	724	0.0	30	0.03	0	0	0	0	0.01/23	24.2	22.7	1.5	26.4/21	11.2	10.5*	0.7	8.5/1	0	13
7	Humde	28.64	84.09	3401	5.9	15.1*	39.1	2	0	0	0	3.5/11	9.2	8.6*	0.6	12/17	-7.2	-6.7	-0.5	-11.6/5	0	16.4
8	Jomsom	28.78	83.73	2741	2.3	21.2	11	1	0	0	0	1.7/10	13.6	11.8	1.8	17.5/16	0.7	-0.6	1.3	-2/4	0	12.9
9	Khairini Tar	28.03	84.09	515	2.1	31.4	6.72	1	0	0	0	1.9/23	26.6	24.9	1.7	29.5/20	11.5	10.2	1.3	10/25	0	15.2
10	Khudi Bazar	28.28	84.36	838	14.3	47.2	30.3	4	0	0	0	9.1/16	23.6	23.1	0.5	26.8/18	9.5	9.5	0.0	6.5/1	0	14.2
11	Kushma	28.22	83.68	900	27.2	34.4	79.1	2	1	0	0	21.6/25	24.6	24	0.6		9.0	9.1	-0.1	6/4	-	15.7
12	Lete	28.63	83.61	2490	23.1	63.3	36.5	5	1	0	0	14.8/10	13.7	12.8*	0.9	19.6/16	2.2	0.5*	1.7	0/3	0	11.6
13	Lumle	28.30	83.82	1738	18.0	51.4	35.1	4	0	0	0	9.2/16	17.7	15.8	1.9	21.3/20	7.7	6.5*	1.2	/	0	10.2
14	Malepatan	28.22	83.97	859	12.5	37.6	33.2	3	0	0	0	5.8/28	23.3	22.3	1.0	26.4/20	9.4	8.6	0.8	7/1	0	13.9
15	Pokhara Airport	28.20	83.98	827	12.9	35.1	36.8	4	0	0	0	5.5/28	23.5	22.7	0.8	26.7/20	11.5	9.7*	1.8	9/1	0	12
16	Syangja	28.10	83.87	871	26.2	33	79.4	3	1	0	0	13.5/16	24.1	22.5	1.6	27.4/20	9.9	8.4	1.5	8.1/5	0	14.2
17	Thakmarpha	28.74	83.68	2655	2.8	21.1	13.3	1	0	0	0	2.6/10	13.6	12.8	0.8	17/16	-0.9	-0.6	-0.3	-3.4/2	0	14.6
<b>Lumbini Province</b>																						
1	Bhairahawa (Agric)	27.53	83.46	112	0.0	25.5	0	0	0	0	0	NR	25.6	25.6	0.0	30/20	11.4	10.7	0.7	9/5	1.0	14.2
2	Bhairahawa Airport	27.51	83.42	108	0.0	27.8	0	0	0	0	0	NR	26.9	25.4	1.5	/	11.8	10.9	0.9	9.3/1	-	15.0
3	Bijuar Tar	28.10	82.85	835	0.1	33.9	0.29	0	0	0	0	0.1/25	26.3	24.9*	1.4	29.1/20	9.3	8.7*	0.6	6.4/4	0	17.0
4	Ghorai	28.04	82.48	663	0.0	24	0	0	0	0	0	NR	24.9	23.6	1.3	28.5/20	10.4	8.8*	1.6	6.5/7	0.0	14.6
5	Gulariya	28.21	81.35	126	2.2	21.5	10.2	0	0	0	0	0.6/7	25.3	25*	0.3	30/20	10.6	10.1	0.5	7.5/10	2	14.6
6	Khajura	28.11	81.59	129	0.0	24.7	0	0	0	0	0	NR	25.6	25.3	0.3	30.5/20	10.6	9.9*	0.7	7.5/1	2	15.0
7	Khanchikot	27.92	83.13	1801	5.6	42.3	13.3	1	0	0	0	5.6/25	18.9	16.1	2.8	23/21	8.1	7.4	0.7	6.3/8	0	10.8
8	Libang Gaun	28.31	82.63	1314	0.5	51.7	0.97	0	0	0	0	0.5/25	22.5	21.4*	1.1	25/21	7.1	6	1.1	3.5/5	0	15.4
9	Lumbini	27.47	83.28	95	0.0	20	0	0	0	0	0	NR	25.4	24.8*	0.6	30/20	11.8	10.5	1.3	9/2	1.0	13.6
10	Nepalgunj (Reg.Off.)	28.05	81.62	141	0.5	22.7	2.2	0	0	0	0	0.5/4	25.2	25.5	-0.3	30/20	11.9	10.1	1.8	8.5/1	1	13.3
11	Nepalgunj Airport	28.10	81.67	165	0.0	26.8	0	0	0	0	0	NR	26.2	25.1	1.1	31/20	11.3	11.8	-0.5	7/1	4	14.9
12	Parasi	27.52	83.66	112	0.2	21.2	0.94	0	0	0	0	0.2/7	25.5	25.2*	0.3	30/20	10.8	10*	0.8	9/6	1	14.7
13	Semari	27.47	83.79	110	2.0	19.7	10.2	1	0	0	0	1.5/8	25.6	25.8	-0.2	30/20	11.4	10.7	0.7	9/2	1.0	14.2
14	Tanghas	28.06	83.24	1547	2.8	41.3	6.78	1	0	0	0	2.8/25	18.9	17.8	1.1	21.5/18	7.85	6.4*	1.45	6/1	0	11.0
15	Tansen	27.86	83.54	1183	0	37.2	0	0	0	0	0	NR	23	21.5	1.5	26/18	11.36	8.7	2.66	9.2/7	0	11.7
16	Taulihawa	27.57	83.07	106	0	24	0	0	0	0	0	NR	25.5	25.2	0.3	30.1/28	11.45	10.9	0.55	8.6/5	2	14.0



**Government of Nepal**  
**Ministry of Agriculture, Forest and Environment**  
**Department of Hydrology and Meteorology**  
**Climate Division (Climate Analysis Section)**  
**Babarmahal, Kathmandu**

S.N	Station	Latitude	Longitude	Elevation	Precipitation								Temperature									
					Total (mm)	Normal	% of Normal	No. of Rainy Days				24hr Highest (mm)/Date	Maximum			Minimum			No. of days with Tx>30°C	DTR (°C)		
								≥1.0mm	≥10.0mm	≥25.0mm	≥50.0mm		Average (°C)	Normal	Dep. form normal (°C)	Highest temp. / Date	Average (°C)	Normal			Dep. form normal (°C)	Lowest temp. / Date
<b>Karnali Province</b>																						
1	Chaurjhari Tar	28.65	82.21	863	0	37.3	0	0	0	0	0	NR	26	23.5	2.1	28.5/20	8.5	7.8	0.67	4/5	0	17.1
2	Dailekh	28.84	81.71	1394	0	49.8	0	0	0	0	0	NR	20	19.7	0.5	22.4/28	9.3	7.5	1.81	6.6/5	0	10.9
3	Dipal Gaun	29.26	82.22	2422	0.01	42.9	0.02	0	0	0	0	0.01/4	20	15.6	4.1	22.5/16	-2.5	-2.7*	0.22	-6.5/5	0	22.1
4	Dunai	28.95	82.90	2098	0	15	0	0	0	0	0	NR	13.6*	-	-	-	0.1*	-	-	-	-	0.0
5	Gamadi Shree Nagar	29.55	82.15	2113	0.4	40.9	0.98	0	0	0	0	0.4/20	19	17.5*	1.1	21/18	5	3.9*	1.06	3.5/1	0	13.6
6	Jajarkot	28.70	82.20	1240	0	43.4	0	0	0	0	0	NR	22	22.9*	-0.6	25/28	8	8.1*	-0.14	4.5/4	0	14.3
7	Jumla	29.27	82.18	2363	0	45.3	0	0	0	0	0	NR	18	15.3	3.1	20.9/16	-2.3	-2.7	0.4	-5.8/5	0	20.7
8	Jumla Airport	29.27	82.19	2384	0	47.4*	0	0	0	0	0	NR	18	15.4*	2.4	20.6/16	-3.2	-3*	-0.21	-6.5/5	0	21.0
9	Manma	29.15	81.61	1729	3.81	59.9*	6.36	1	0	0	0	3.8/25	20	18*	1.8	22/28	7.2	5.6	1.56	4.3/2	0	12.7
10	Mehalkuna	28.42	81.84	464	0	27.4*	0	0	0	0	0	NR	27	25.2*	1.5	29/28	9.5	8.4*	1.11	4/5	0	17.1
11	Musikot (Rukumkot)	28.62	82.46	1412	6.01	43	14	1	0	0	0	6/25	22	20.1	1.7	23.8/28	9	6.3	2.65	6.3/5	0	12.8
12	Nagma	29.20	81.91	2017	0	67.6	0	0	0	0	0	NR	18	17.9*	-0.1	19.6/5	2.4	1.5	0.91	-0.2/5	0	15.4
13	Pusma Camp	28.88	81.23	953	0	51	0	0	0	0	0	NR	21	20.2	1.1	24.2/21	8.9	10*	-1.15	0.3/18	0	12.5
14	Rara	29.54	82.08	2989	3.1	42.3*	7.33	1	0	0	0	3.1/23	13	9.5*	3	15.5/16	-2.9	-3.8	0.87	-5.5/4	0	15.5
15	Salyan Bazar	28.38	82.14	1557	1.2	42.4	2.83	1	0	0	0	1.2/25	23	20.8	2.5	25.8/20	8.7	7.8	0.87	5.8/4	0	14.7
16	Simikot	29.97	81.82	2993	2.2	44.5*	4.94	1	0	0	0	2/2	13	8.9*	4.2	17/17	-1.4	-4.7*	3.28	-5.2/4	0	14.6
17	Surkhet Airport	28.59	81.64	720	0.01	48.1	0.02	0	0	0	0	0.01/19	26	23.4	2.3	27.8/28	8.7	8.1*	0.55	4.9/6	0	17.1
18	Talcha	29.52	82.15	2750	2.7	19.9*	13.6	2	0	0	0	1.6/20	15	12.5*	2.2	18.3/18	0.8	0	0.82	-2.3/4	0	13.9
<b>Sudurpaschim Province</b>																						
1	Baitadi (Gothalapani)	29.56	80.41	1352	1.5	56.8	2.7	1	0	0	0	1.5/20	22	20.6*	1.1	24.5/21	7.6	5.9*	1.73	4/7	0	14.1
2	Bajura (Martadi)	29.46	81.48	1598	0.0	73.4	0.0	0	0	0	0	0.01/20	20	18.5*	1.2	21.5/28	7.8	5.3*	2.47	5.2/4	0	11.9
3	Chainpur (East)	29.55	81.20	1405	17.9	58.2*	30.8	2	1	0	0	10.8/20	22	20.1*	1.4	23.4/28	6.6	6.2*	0.41	3.2/5	0	14.9
4	Chisapani (Karnali)	28.65	81.29	201	0.0	32.4	0.0	0	0	0	0	NR	26	24.1	1.7	30/19	14	13.1	0.61	10.4/8	1	12.1
5	Dadeldhura	29.30	80.59	1879	9.0	65.2	13.8	1	0	0	0	9/20	19	16.3	2.2	20.7/28	6.8	5.2	1.61	4.1/4	0	11.7
6	Darchula	29.84	80.55	945	1.8	50.7*	3.6	1	0	0	0	1.8/20	25	23.3*	1.5	27.8/22	9	8.4*	0.61	5.3/5	0	15.8
7	Dhangadhi (Attariya)	28.81	80.56	184	0.2	30.4	0.7	0	0	0	0	0.2/2	25	24.9	0.5	30/19	12	9.8*	2.03	7.5/1	1	13.5
8	Dipayal	29.26	80.94	563	2.3	50.9	4.5	1	0	0	0	2.3/25	27	25.4	1.4	30.7/28	7.9	7.9	0.02	3.6/5	1	18.8
9	Godavari (West)	28.88	80.58	280	0.0	37.7	0.0	0	0	0	0	NR	26	24.9	1	31/20	13	12.7*	-0.2	7.5/1	3	13.4
10	Mahendra Nagar	28.95	80.23	197	0.0	37.1	0.0	0	0	0	0	0.01/19	26	24.7	1.1	30.2/19	11	9.4	1.43	7.5/4	2	15.0
11	Mangalsen	29.14	81.25	1310	2.4	68	3.5	1	0	0	0	1.7/25	19	21*	-1.9	25.2/26	8	6.5	1.46	5/5	0	11.1
12	Patan new	29.47	80.55	1292	2.2	41.3*	5.4	1	0	0	0	2.2/20	22	19.5*	2.7	25.5/28	7.1	6.1	0.95	4/5	0	15.1
13	Tikapur	28.54	81.12	149	0.0	36.7	0.0	0	0	0	0	NR	25	25.2	0.1	30.3/28	11	9.5	1.95	7/1	1	13.9

**Note:**

- This summary is prepared based on the precipitation and temperature recorded at 126 meteorological stations.
- Normal precipitation/temperature is the average of the monthly precipitation/temperature for the period of 1991-2020. An asterisk (\*) indicates locations where normal data are unavailable; in such cases, the values are average over the available data period. In case of precipitation, less than 90% of normal precipitation is considered as below normal, 90 to 110% is considered as near normal, and more than 110% of normal precipitation is considered as above normal precipitation for the month.
- Abbreviation: "No." = number; "hr" = hour; "mm" = millimeter; "temp" = temperature; "/" or "-" = Data Not Available; "Dep." = departure; "Tx" = Maximum temperature; "DTR" = Diurnal Temperature Range

**Please report any errors or inaccuracies in this document to [climateupdates.dhm@gmail.com](mailto:climateupdates.dhm@gmail.com)  
 Or contact us by phone at 015319007, 9749498042.**