



**Government of Nepal**  
**Ministry of Agriculture, Forest and Environment**  
**Department of Hydrology and Meteorology**  
**Climate Division (Climate Analysis Section)**  
Babarmahal, Kathmandu

March 27, 2026

**Preliminary Precipitation and Temperature Summary**  
**January 2026.**

### **Highlights**

January 2026 experienced markedly below-normal precipitation, with a monthly average precipitation of 11.8 mm against the climatological normal of 22.5 mm (1991-2020), amounting to 52.4% of normal.

### **Synoptic Sequence**

Throughout January, Nepal remained under the influence of westerly winds, with periodic fluctuations in intensity. During the first eight days, a moderate to strong westerly flow produced partly to generally cloudy conditions over the high hilly and mountainous regions of Koshi Province, Gandaki Province, Karnali Province and Sudurpashchim Province, while the Terai and valleys experienced widespread mist and dense fog. A brief synoptic change took place on 9<sup>th</sup> to 11<sup>th</sup> January, when a low-pressure system over the southwest Bay of Bengal exerted partial influence, resulting in generally cloudy skies across Koshi Province, Madhesh Province, Bagamati Province, Gandaki Province and Lumbini Province. Fog persisted over most Terai areas.

From January 12 to 26, the country experienced a long calm period with weak winds. Cloudiness became largely confined to the high Himalayan regions of Gandaki Province and Karnali Province, while the Terai recorded fog only at scattered places. The observed 24 hour accumulated precipitation measured on 23<sup>rd</sup> January shows light precipitation in Sudurpashchim region as a result of westerly wind. During 27<sup>th</sup> and 28<sup>th</sup> of the month an active westerly low pressure system was observed generating mostly cloudy to generally overcast skies over Gandaki Province, Lumbini Province, Karnali Province, Bagamati Province and Sudurpaschim Province Province.

### **Precipitation**

During January 2026, most parts of the country received less than 50 mm of precipitation, except for a isolated area of Sudurpashchim Province, where precipitation amounts reached >50 mm. The precipitation gradient can be observed from east to western part of the country. Higher precipitation was observed in the Sudurpashchim Province followed by Lumbini Province, most part of Karnali Province and Gandaki Province where the precipitation greater than 10mm was observed. Whereas Koshi Province, Madhesh Province, Bagamati Province and few parts of Gandaki Province and Lumbini Province recorded below 5mm precipitation (Figure 1).



Government of Nepal  
Ministry of Agriculture, Forest and Environment  
Department of Hydrology and Meteorology  
Climate Division (Climate Analysis Section)  
Babarmahal, Kathmandu

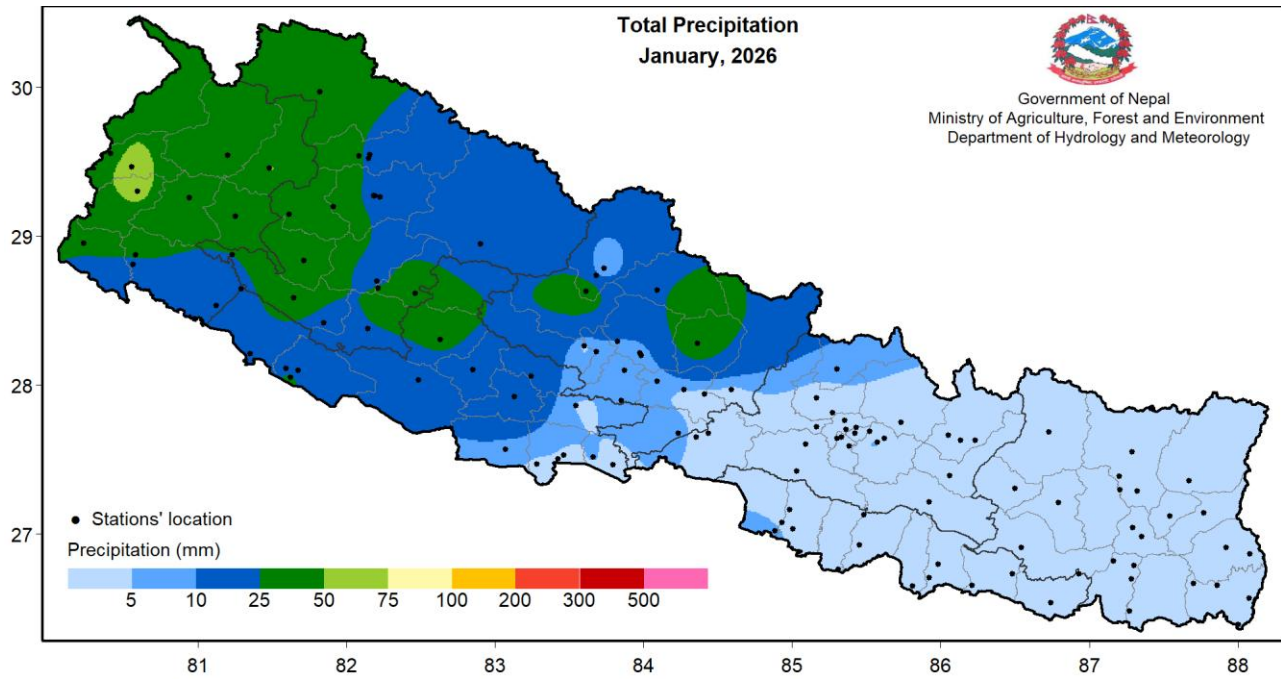


Figure 1: Total precipitation in January 2026

Few northern parts of Gandaki and Karnali Province recorded above normal precipitation whereas remaining parts of the country recorded normal to below normal precipitation. The Bagamati, Madhesh and Koshi province showed the extreme drought during this month recording less than 30% of the normal precipitation of the month (Figure 2).

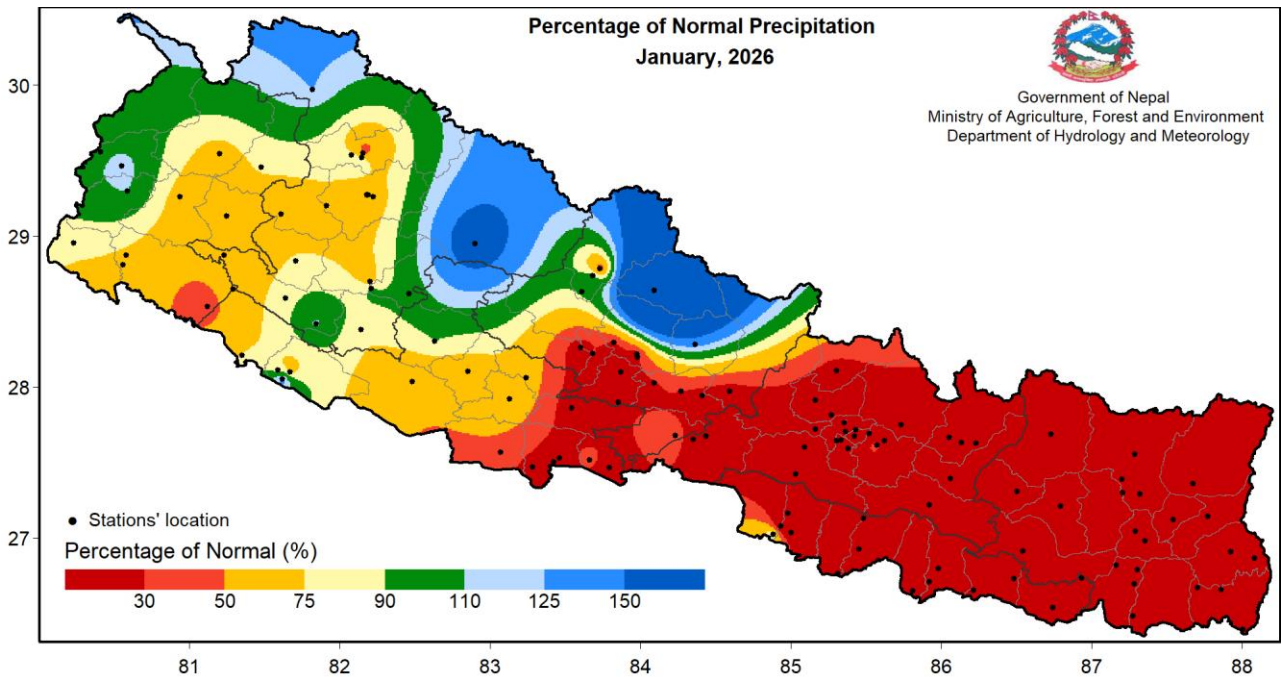


Figure 2: Percentage of normal precipitation in January 2026



Government of Nepal  
Ministry of Agriculture, Forest and Environment  
Department of Hydrology and Meteorology  
Climate Division (Climate Analysis Section)  
Babarmahal, Kathmandu

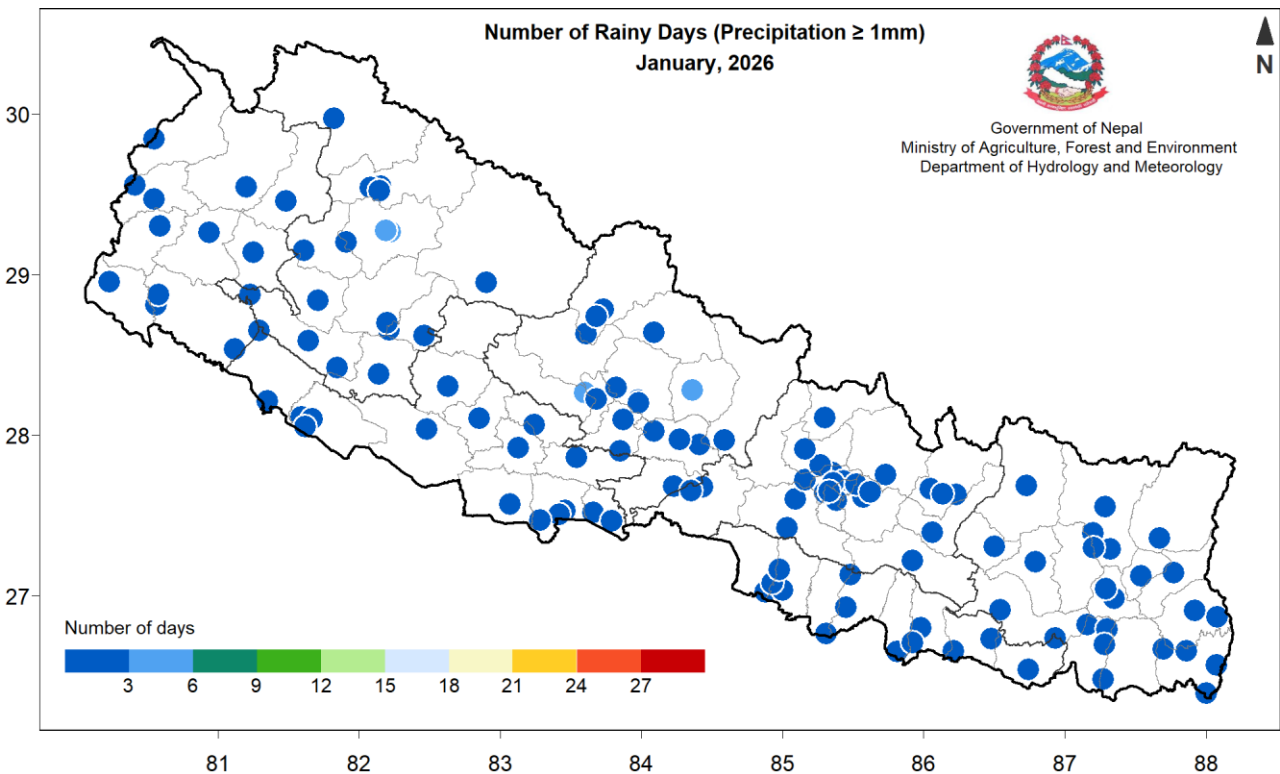


Figure 3: Number of Rainy days ( $\geq 1\text{mm}$ ) during January 2026

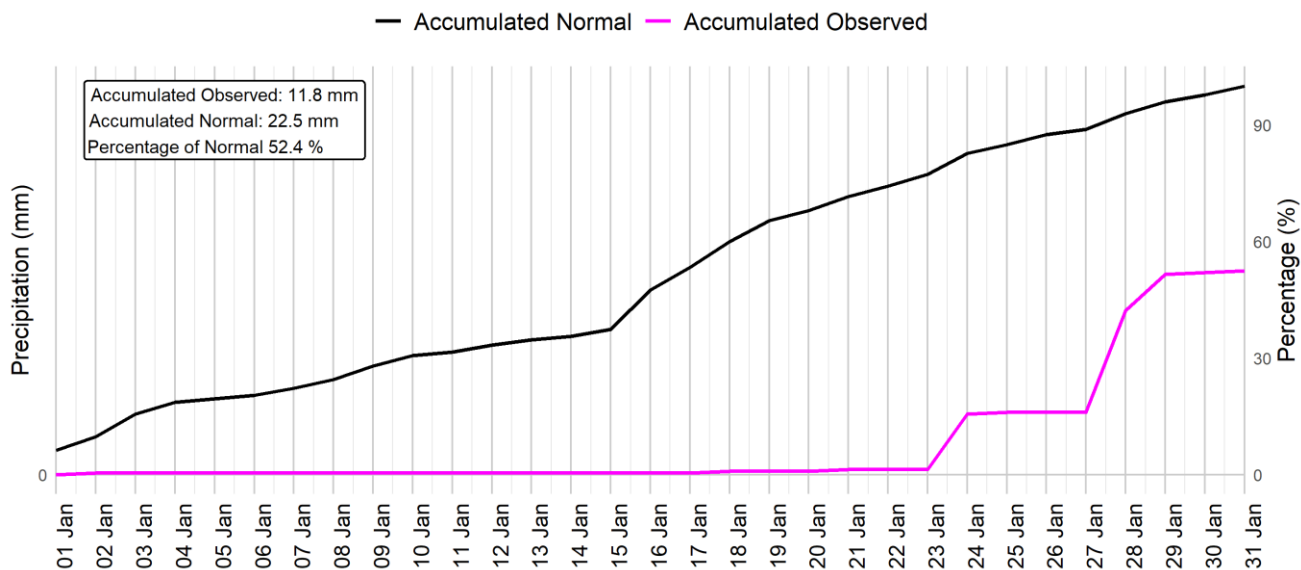
Lete station of Mustang district recorded the highest daily precipitation of 32 mm on 28<sup>th</sup> January and the highest monthly precipitation of 56.8 mm was observed in Patan new station whereas %). 30 stations among 120 stations recorded 0 mm precipitation (Annex 1). Based on data from 120 stations, Nepal received 52.4% of the normal precipitation during this month. Humde station of Manang district recorded the highest percentage of normal precipitation (383.5 %)

The temporal distribution of monthly cumulative average of daily precipitation shows that precipitation remained below normal throughout the month. (Figure 4). The highest January precipitation since 1981 was observed in 2020 since then the January monthly precipitation has been recorded below normal for 6 consecutive years (Figure 5).

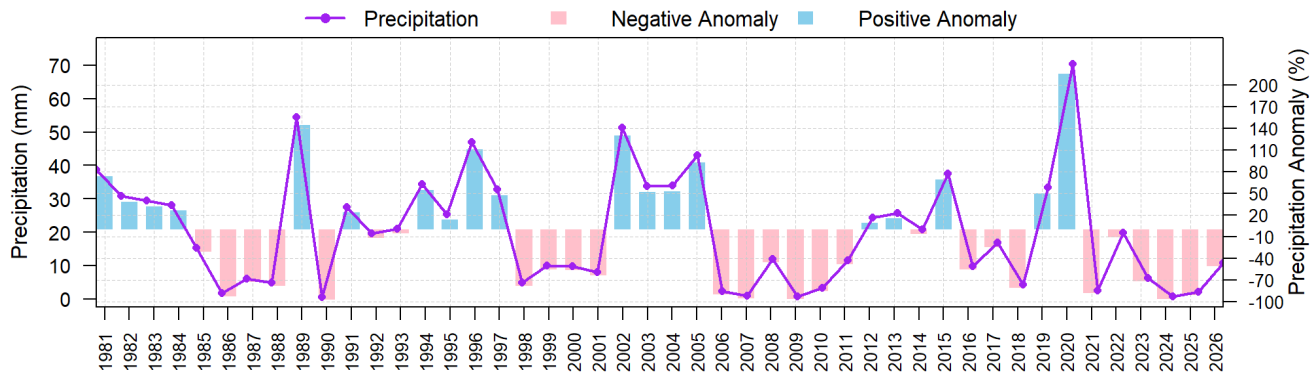


**Government of Nepal**  
**Ministry of Agriculture, Forest and Environment**  
**Department of Hydrology and Meteorology**  
**Climate Division (Climate Analysis Section)**  
 Babarmahal, Kathmandu

**Monthly Precipitation Monitoring**  
**January, 2026**



*Figure 4: Cumulative average of daily normal and observed precipitation during January 2026*



*Figure 5: All Nepal monthly total precipitation of January from 1981 to 2026 (average of 104 stations)*



Government of Nepal  
Ministry of Agriculture, Forest and Environment  
Department of Hydrology and Meteorology  
Climate Division (Climate Analysis Section)  
Babarmahal, Kathmandu

### Maximum Temperature

Maximum temperature of Terai remained above 18°C, while most of the northern part of country recorded below 6°C (Figure 6).

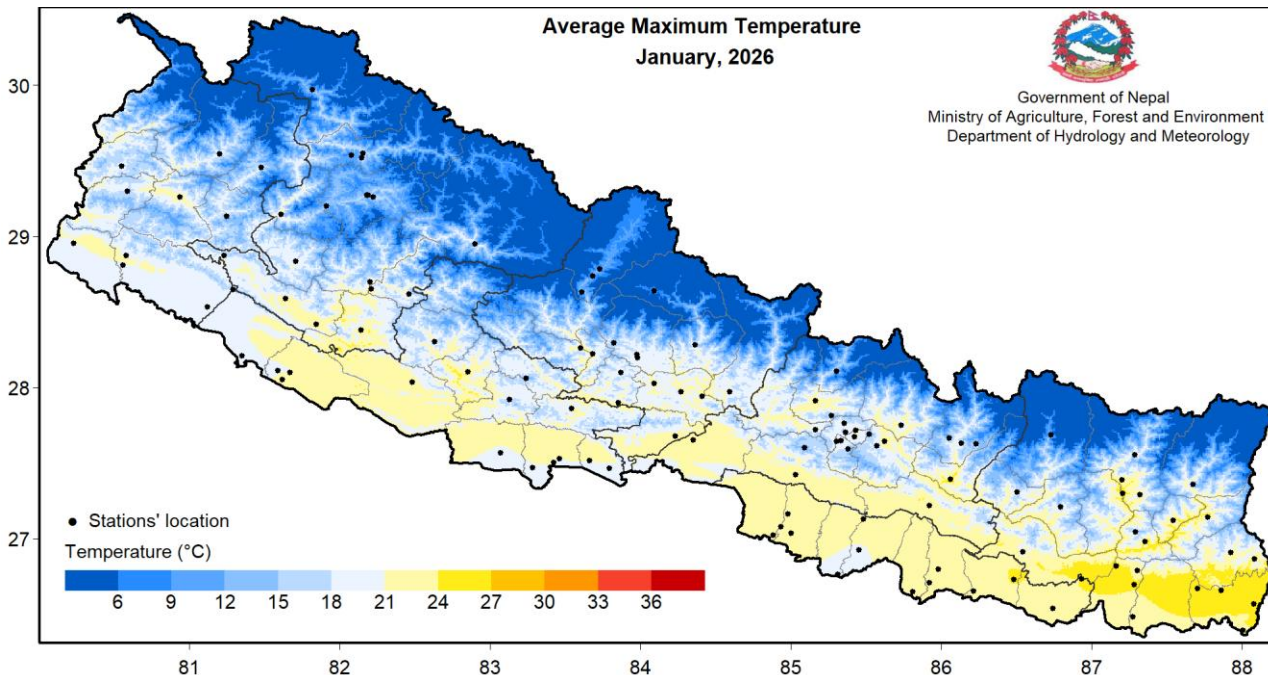


Figure 6: Maximum Temperature in January 2026

Chatara station of Sunsari district and Humde station of Manang district recorded the highest and lowest monthly maximum temperature of 25.5°C and 8.2°C respectively. Similarly, the highest monthly anomaly of 6.5°C was recorded at 'Kanyam Tea Estate' station of Illam district and the lowest of -3.4°C was recorded at Mangalsen station of Achham district (Annex 1).

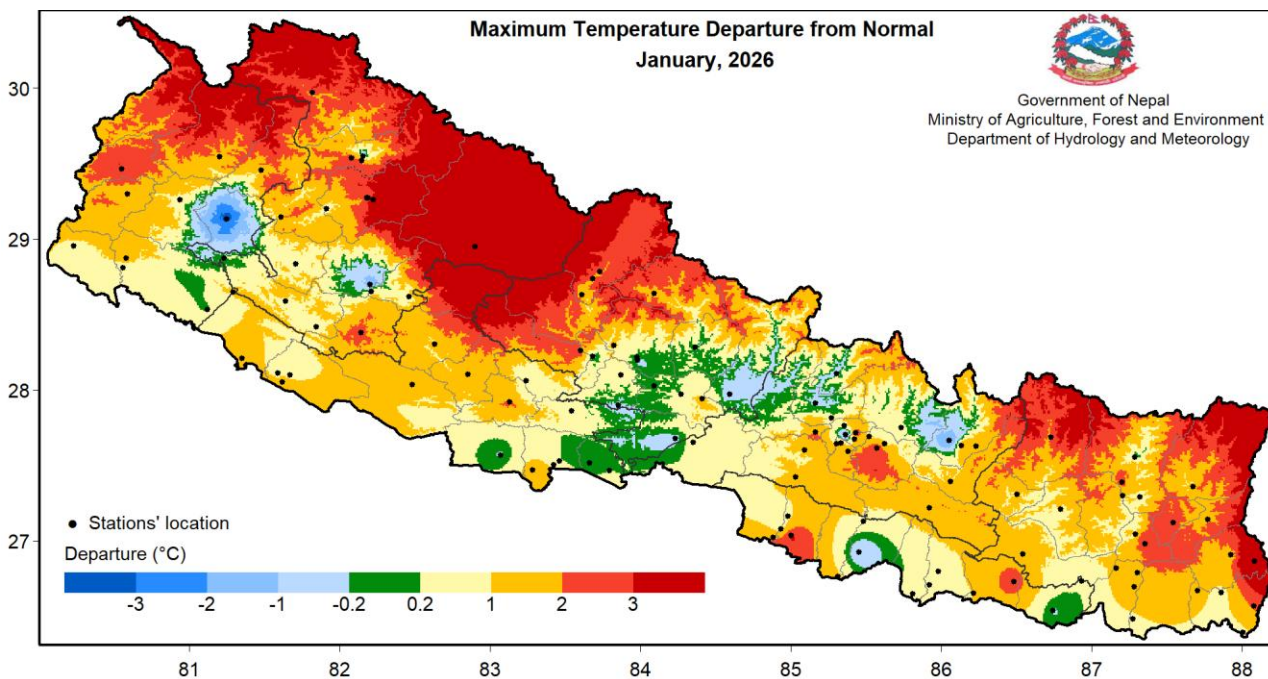


Figure 7: Departure from normal maximum temperature in January 2026



**Government of Nepal**  
**Ministry of Agriculture, Forest and Environment**  
**Department of Hydrology and Meteorology**  
**Climate Division (Climate Analysis Section)**  
Babarmahal, Kathmandu

The highest daily maximum temperature of 29.0 °C was recorded at Lahan station of Siraha district on 23<sup>rd</sup> January while the lowest daily maximum temperature of 1.6 °C was recorded at simikot station of Mugu district on 28<sup>th</sup> January.

Few isolated parts of the country recorded below normal maximum temperatures whereas rest of the country recorded normal to above normal maximum temperatures. High Himalayan regions of Sudurpashchim, Lumbini, Gandaki and Koshi Province recorded the highest departure of temperature from normal (maximum of +3 to above) (Figure 7). Country showed the positive anomaly of maximum temperature during January 2026. The average monthly temperature observed this year is slightly lower than that observed in 2025 and yet it show the deviation of about 0.8 °C from the climatological normal (Figure 8).

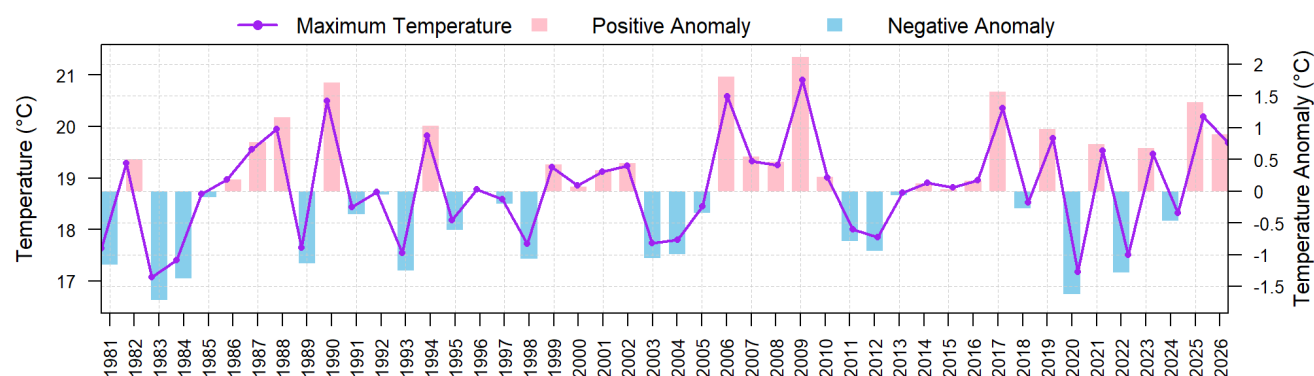


Figure 8: Monthly average maximum temperature anomaly of January from 1981 to 2026 of 63 stations (average of monthly average maximum temperature at stations having long term data)

### Minimum Temperature

The minimum temperature in most part of the central and eastern Terai remained between 6°C and 12°C whereas Terai region of western Nepal recorded the temperature below 9°C. In most parts of Himalayan region, the minimum temperature remained below 0 °C and reached below -9°C in some parts (Figure 9).

Most parts of Koshi, Lumbini, Gandaki and Karnali Province recorded above normal minimum temperature whereas most parts of Sudurpashchim, Bagamati and Madhesh Province recorded normal to below normal minimum temperature. Overall, larger portion of the country recorded above normal minimum temperature compared to normal and below normal (Figure 10).

Dharan Bazar station and Humde station of Sunsari district and Manang district recorded the highest and lowest monthly minimum temperature of 11.8 °C and -9.3°C respectively. Similarly, the highest monthly anomaly of 3.3°C was recorded at Chainpur (East) station and the lowest anomaly of -2.3°C was recorded at Sindhuli Madhi station (Annex 1). The highest daily minimum temperature of 15.3°C was recorded at Dharan Bazar station of Sunsari on 28<sup>th</sup> January, while the lowest daily minimum temperature of -9.5°C was recorded at Dipal Gaun station of Jumla district on 8<sup>th</sup> January (Annex 1).



Government of Nepal  
Ministry of Agriculture, Forest and Environment  
Department of Hydrology and Meteorology  
Climate Division (Climate Analysis Section)  
Babarmahal, Kathmandu

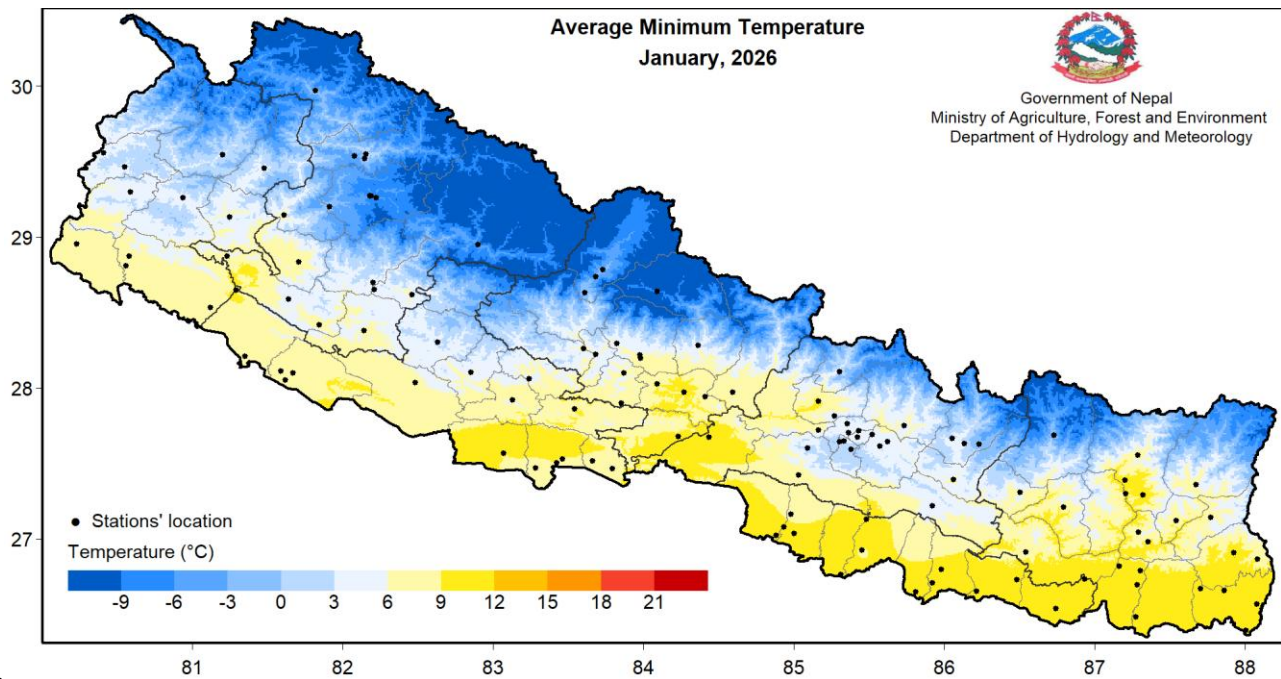


Figure 9: Average Minimum Temperature in January 2026

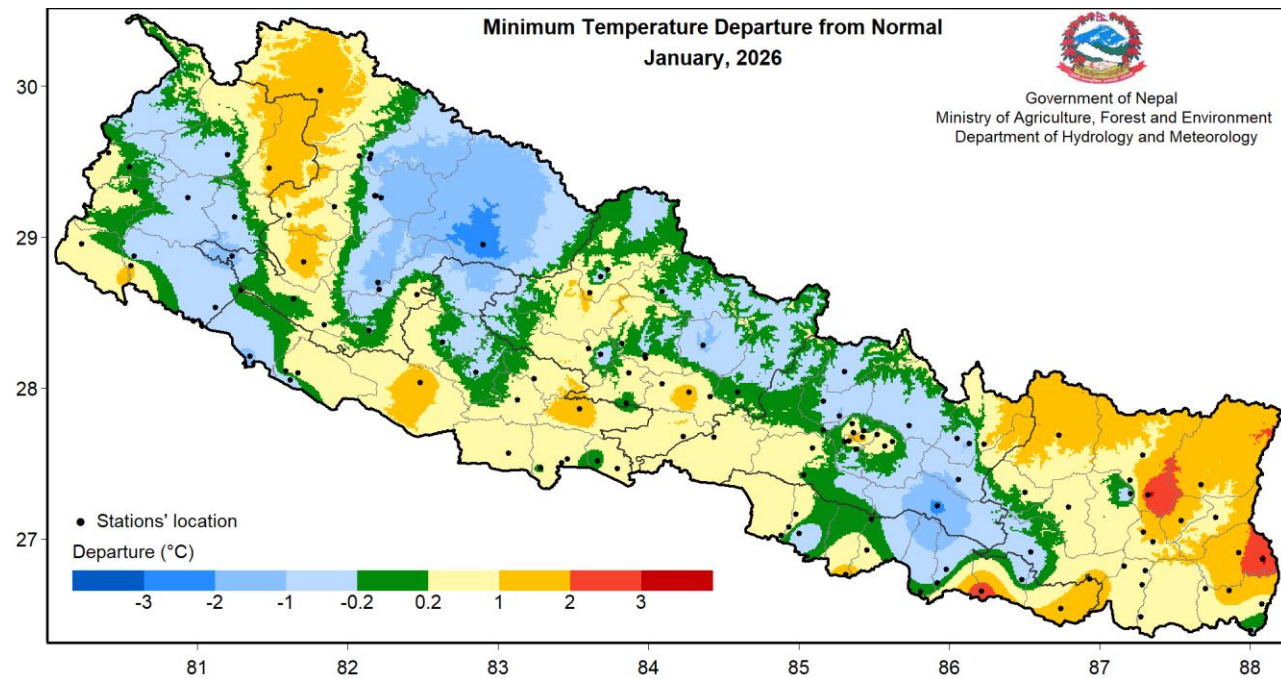


Figure 10: Departure from normal minimum temperature in January 2026

Since 2020, the minimum average temperature recorded in January has shown the positive anomaly i.e. 7 years in a row in 2026. Compared to the average monthly minimum temperature in January of 2025, this year's average monthly temperature in January is nearly 1°C lower (Figure 11).



Government of Nepal  
Ministry of Agriculture, Forest and Environment  
Department of Hydrology and Meteorology  
Climate Division (Climate Analysis Section)  
Babarmahal, Kathmandu

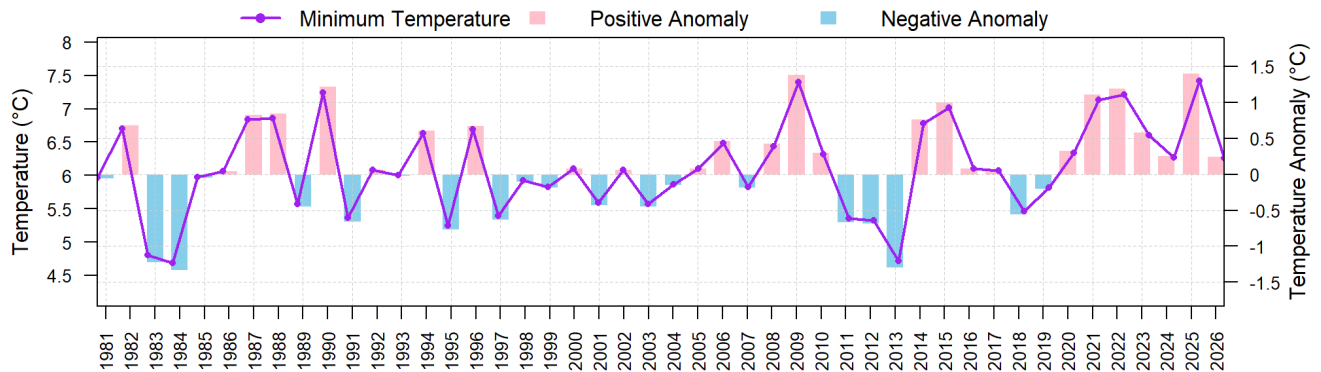


Figure 11: All Nepal monthly average minimum temperature of January from 1981 to 2026 of 62 stations (average of monthly average minimum temperature at stations having long term data)

### Diurnal Temperature Range

Most parts of the country experienced a diurnal temperature range (DTR) below 19°C. However, three stations, Dipal Gaun, Jumla and Jumla Airport recorded the diurnal temperature of 23.6°C, 21.3°C and 21.2°C respectively. The DTR is the difference between the maximum and minimum temperatures during a day. Dipal Gaun station recorded the highest DTR of 23.6°C whereas Illam Tea Estate station recorded the lowest DTR of 8.6°C. The DTR values shown in the figure represent the average of daily DTRs (Figure 12).

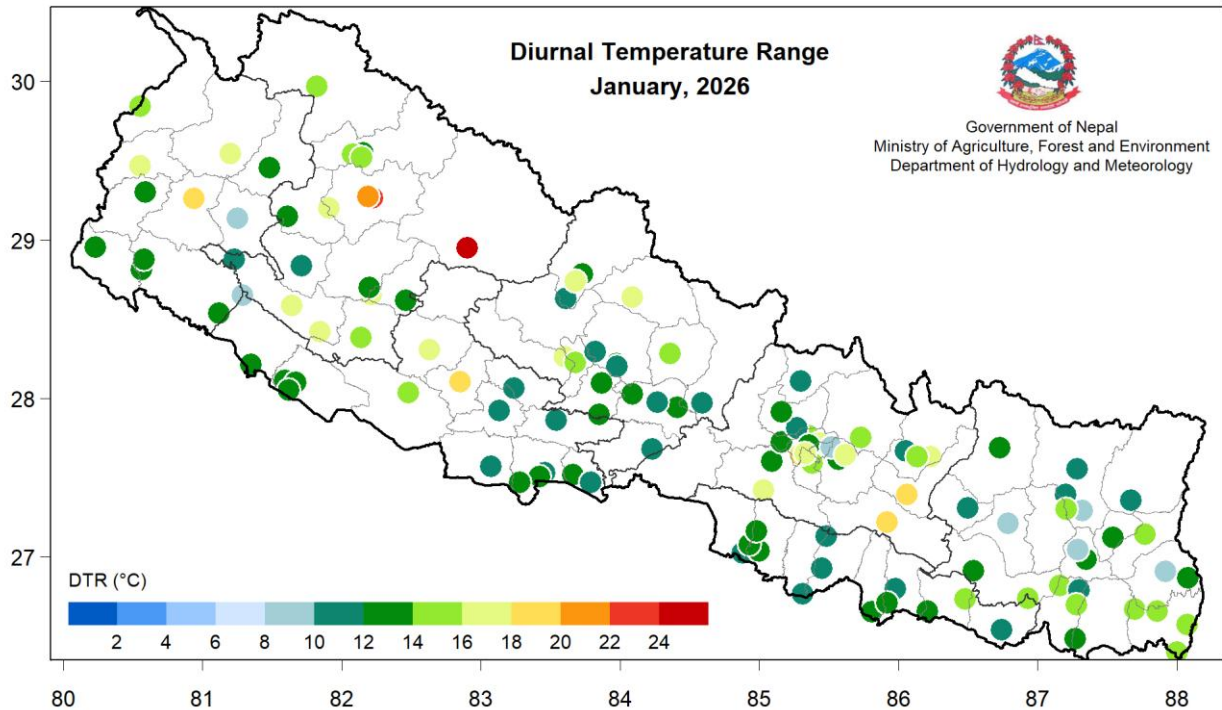


Figure 12: Station plot of diurnal temperature range for January, 2026



**Government of Nepal**  
**Ministry of Agriculture, Forest and Environment**  
**Department of Hydrology and Meteorology**  
**Climate Division (Climate Analysis Section)**  
Babarmahal, Kathmandu

### Historical record break

Talcha station of Mugu district and Tikapur station of Kailiya district recorded all time lowest minimum temperature this month (Table 1).

*Table 1: List of stations recording all-time record breaking lowest Minimum Temperature observed in January 2026.*

S.N.	Station Name	District	Record break daily Minimum Temperature (°C)/Date	Previous Lowest Temperature (°C)/Date
1	Talcha	Mugu	-4.1/2026-01-29	-3.3/2026-01-07
2	Tikapur	Kailali	-3.3/2026-01-05	0.0/2013-01-10

*Table 2: List of stations breaking the monthly lowest daily minimum temperature in January 2026.*

S.N.	Station Name	District	Record break minimum temperature (°C)/Date	Previous lowest minimum temperature (°C)/Date
1	Tikapur	Kailali	-3.3/2026-01-05	0.0/2013-01-10
2	Jajarkot_AWS	Jajarkot	2.5/2026-01-10	3.6/2022-01-28
3	Sindhuli Madhi	Sindhuli	1.1/2026-01-10	1.5/2024-01-28
4	Kalaiya	Bara	5.0/2026-01-11	5.6/2024-01-28
5	Talcha	Mugu	-4.1/2026-01-29	-3.3/2026-01-07



**Government of Nepal**  
**Ministry of Agriculture, Forest and Environment**  
**Department of Hydrology and Meteorology**  
**Climate Division (Climate Analysis Section)**  
 Babarmahal, Kathmandu

**Annex 1: Monthly precipitation and temperature data for January 2026**

S.N	Station	Latitude	Longitude	Elevation	Precipitation							Temperature										
					Total (mm)	Normal	% of Normal	No. of Rainy Day				24hr Highest (mm)/Date	Maximum			Minimum				No. of days with Tx>30°C	DTR (°C)	
								≥1.0mm	≥10.0mm	≥25.0mm	≥50.0mm		Average (°C)	Normal	Dep. form normal (°C)	Highest temp. / Date	Average (°C)	Normal	Dep. form normal (°C)			Lowest temp. / Date
<b>Koshi Province</b>																						
1	Biratnagar-Airport	26.48	87.27	72	0.0	11.2	0.0	0	0	0	0	NR	23.7	22.5	1.2	/	9.4	9.2	0.2	6/11	-	14.2
2	Chainpur-(Bajhang)-	27.29	87.32	1277	0.0	11.7	0.1	0	0	0	0	0.01/4	19.0	18.2	0.8	21/31	9.9	6.6	3.3	8/3	0	9.1
3	Chandragadi-Airport	26.57	88.08	95	0.0	0*		0	0	0	0	NR	24.6	22.4*	2.2	28.1/27	10.2	9.8*	0.4	6.5/9	0	14.4
4	Chatara	26.82	87.16	105	0.0	11.5	0.0	0	0	0	0	NR	25.5	24.2*	1.3	28.6/21	10.7	9.9*	0.8	7/7	0	14.8
5	Damak	26.67	87.70	119	0.0	13.1	0.0	0	0	0	0	NR	25.2	23.7*	1.5	28.5/23	9.7	9.1*	0.6	5/9	0	15.5
6	Dhankuta	26.98	87.35	1192	0.0	11.7	0.0	0	0	0	0	NR	21.7	18.7	3.0	23.4/24	8.0	6.9	1.1	6.2/9	0	13.8
7	Dharan-Bazar	26.79	87.30	310	0.0	10.4	0.0	0	0	0	0	NR	23.5	22.7*	0.8	26.3/27	11.8	11.1*	0.7	6/8	0	11.7
8	Diktel	27.21	86.79	1612	0.0	11.6	0.0	0	0	0	0	NR	17.4	16.4*	1.0	19.5/20	7.4	6.7*	0.7	6/7	0	10
9	Gaida-(Kankai)	26.66	87.86	107	0.0	11.2	0.0	0	0	0	0	NR	24.3	23.7	0.6	27.5/28	10.1	8.2	1.9	5/9	0	14.2
10	Ilam-Tea-Estate	26.91	87.92	1208	0.0	11.4	0.0	0	0	0	0	NR	18.9	17.3	1.6	20.5/24	10.3	8.4	1.9	8.6/4	0	8.6
11	Kanyam-Tea-Estate	26.87	88.08	1570	0.0	15.5	0.0	0	0	0	0	NR	20.8	14.3	6.5	23.5/29	7.3	4.1	3.2	5.5/4	0	13.5
12	Kechana	26.40	88.00	71	0.0	8.3*	0.0	0	0	0	0	NR	23.8	23*	0.8	27.9/28	9.4	9.7*	-0.3	6/7	0	14.4
13	Khadbari	27.39	87.20	1064	0.0	5.8*	0.3	0	0	0	0	0.01/4	20.9	18.3*	2.6	22.5/29	9.7	9*	0.7	8/9	0	11.2
14	Lukla-Airport	27.69	86.73	2786	1.1	15.3*	7.2	0	0	0	0	0.5/29	10.4	8.3*	2.1	14.7/13	-1.8	-2.9*	1.1	-3.5/15	0	12.2
15	Num	27.56	87.29	1494	1.5	27.3	5.5	1	0	0	0	1.5/4	16.4	16*	0.4	19/24	6.2	5.4*	0.8	4.5/10	0	10.2
16	Okhaldhunga	27.31	86.50	1731	0.0	12	0.1	0	0	0	0	0.01/29	17.2	15.9	1.3	19.9/26	5.7	5.3	0.4	4/7	0	11.5
17	Pakhribas	27.05	87.29	1720	0.0	15.1	0.0	0	0	0	0	NR	15.7	14.6	1.1	18.5/24	6.1	5	1.1	4.5/4	0	9.6
18	Phidim	27.14	87.77	1157	0.0	11.8	0.0	0	0	0	0	NR	21.9	20.3	1.6	23.8/17	7.1	6.7	0.4	5.1/10	0	14.8
19	Taplejung	27.36	87.67	1744	0.1	17.6	0.6	0	0	0	0	0.1/4	16.3	14.7	1.6	18.4/17	5.3	4.1	1.2	2.9/10	0	10.9
20	Tarahara	26.70	87.28	120	1.8	15.1	11.9	1	0	0	0	1/4	24.1	22.3	1.8	27.5/28	9.4	8.5	0.9	5/9	0	14.7
21	Terhathum	27.12	87.54	1525	0.0	14.9	0.0	0	0	0	0	NR	20.3	17.6	2.7	22/17	6.5	5.2	1.3	5/7	0	13.8
22	Tumlingtar	27.30	87.20	477	0.0	6.1	0.0	0	0	0	0	NR	24.6	23.5*	1.1	26.1/17	8.6	9.3*	-0.7	6/10	0	16
23	Udayapur-Gadhi	26.91	86.54	469	0.0	8.4	0.0	0	0	0	0	NR	22.7	21.5	1.2	/	8.9	9.5	-0.6	5.5/8	-	13.8
<b>Madhesh Province</b>																						
1	Birgunj	27.02	84.88	67	9.7	11.1*	87.48	1	0	0	0	9.5/2	22.2	20.2*	2.0	27.5/27	10.4	10.1*	0.3	7.5/11	0	11.8
2	Gaur	26.77	85.31	77	0.0	12.8	0	0	0	0	0	NR	20.6	19.4	1.2	26.4/27	9.7	8.2	1.5	5.8/12	0	10.9
3	Hardinath	26.80	85.98	93	0.2	5.4*	3.7	0	0	0	0	0.2/29	21.0	20.4*	0.6	25.5/27	9.7	10.2*	-0.5	4.8/11	0	11.3
4	Jaleshwar	26.65	85.81	68	0.0	2.9	0	0	0	0	0	NR	22.0	21.6	0.4	26.5/29	9.6	9.6	0.0	6/11	0	12.4
5	Janakpur-Airport	26.71	85.92	76	0.0	12.1	0	0	0	0	0	NR	22.2	21.8	0.4	27.4/24	9.1	9.3	-0.2	5.2/11	0	13.1
6	Kalैया	27.04	85.00	100	0.0	11.9	0	0	0	0	0	NR	22.1	18.9*	3.2	26.4/29	9.5	10.6*	-1.1	5/11	0	12.5
7	Karmaiya	27.13	85.48	139	0.0	8.5	0	0	0	0	0	NR	22.6	21.9	0.7	27/28	11.0	10.9	0.1	6/9	0	11.6
8	Lahan	26.73	86.48	110	0.0	15	0	0	0	0	0	NR	24.4	21.7*	2.7	29/18	9.3	9.9*	-0.6	6/9	0	15
9	Manusmara	26.93	85.45	90	0.0	10.8	0	0	0	0	0	NR	20.6	21.5	-0.9	25/19	8.8	8.5	0.3	4.6/11	0	11.8
10	Parwanipur	27.08	84.93	87	0.0	13.2	0.076	0	0	0	0	0.01/29	21.5	21	0.5	25.5/27	9.5	8.8	0.7	5/11	0	12.1
11	Phattepur	26.74	86.93	83	-	12.6	-	-	-	-	-	-	-	24.5	-	/	-	9	-	/	-	-
12	Rajbiraj	26.54	86.74	68	-	14.2	-	-	-	-	-	-	-	22.4	-	/	-	9.8	-	/	-	-
13	Simara-Airport	27.16	84.98	137	0.0	14.1	0.071	0	0	0	0	0.01/29	22.0	21.2	0.8	26.2/27	8.5	7.7	0.8	4.1/11	0	13.4
14	Siraha	26.66	86.21	63	0.0	11.8	0	0	0	0	0	NR	22.3	21.3*	1.0	27.2/24	10.2	7.2*	3.0	5/11	0	12.1
<b>Bagamati Province</b>																						
1	Bahrabise	27.79	85.90	884	-	18.4	-	-	-	-	-	-	-	21.5*	-	/	-	5.6*	-	/	-	-
2	Bhaktapur	27.68	85.42	1315	2.5	15.4	16.23	1	0	0	0	2.5/29	20.9	19.7*	1.2	23.5/27	3.5	1.9*	1.6	1.7/10	0	17.4
3	Bharatpur	27.68	84.43	216	1.5	16.1*	9.5	1	0	0	0	1.4/29	-	22.2*	-	/	9.9	9.7*	0.2	8/12	-	-
4	Buddhanilakantha	27.76	85.35	1378	3.5	10.9*	32.1	1	0	0	0	3.5/29	18.5	17.8*	0.7	20.5/31	-	3.6*	-	/	0	-
5	Changu Narayan	27.72	85.43	1502	3.4	15	22.67	1	0	0	0	3.4/29	21.2	18.4*	2.8	24.2/31	4.4	4.8*	-0.4	3/13	0	16.8
6	Charikot	27.67	86.05	1940	0.0	17.1	0	0	0	0	0	NR	13.6	15.7*	-2.1	16.8/13	2.3	2.6*	-0.3	-0.8/11	0	11.3
7	Chautara	27.75	85.73	1552	1.9	14.3	13.29	1	0	0	0	1.9/29	19.2	18.4*	0.8	22.3/31	4.9	5.6*	-0.7	2.5/8	0	14.3
8	Daman	27.60	85.09	2265	3.4	19.3*	17.6	1	0	0	0	3.4/29	14.1	13.1*	1.0	17.5/13	1.9	1.2*	0.7	0.1/5	0	12.3



**Government of Nepal**  
**Ministry of Agriculture, Forest and Environment**  
**Department of Hydrology and Meteorology**  
**Climate Division (Climate Analysis Section)**  
**Babarmahal, Kathmandu**

S.N	Station	Latitude	Longitude	Elevation	Precipitation							Temperature							DTR (°C)			
					Total (mm)	Normal	% of Normal	No. of Rainy Days				24hr Highest (mm)/Date	Maximum			Minimum						
								≥1.0mm	≥10.0mm	≥25.0mm	≥50.0mm		Average (°C)	Normal	Dep. form normal (°C)	Highest temp. / Date	Average (°C)	Normal		Dep. form normal (°C)	Lowest temp. / Date	No. of days with Tx>30°C
9	Dhulikhel	27.62	85.57	1543	5.5	15.4	35.7	1	0	0	0	5.5/29	17.9	14.7	3.2	20/17	3.9	3.6	0.3	2/9	0	14
10	Dhunchhe	28.11	85.30	1993	6.5	34.3	19	1	0	0	0	6.5/29	13.4	13.7*	-0.3	15.7/13	2.3	3*	-0.7	-0.4/10	0	11.1
11	Dhuni Besi	27.72	85.16	991	2.3	17.7	13.1	1	0	0	0	2.3/29	20.8	18.6	2.2	23.5/26	7.8	7.9	-0.1	5.5/2	0	13
12	Godavari	27.59	85.38	1527	4.6	19.9	23.1	1	0	0	0	4.6/29	18.7	16.2	2.5	22/5	2.3	2.7	-0.4	0/13	0	16.4
13	Hetauda N.F.I.	27.42	85.03	452	0.0	19	0	0	0	0	0	NR	23.6	22.2	1.4	/	7.4	7.3	0.1	/	-	16.2
14	Jiri	27.63	86.23	1877	0.0	17.3	0	0	0	0	0	NR	15.5	14.4	1.1	18.6/28	-0.8	-1.7	0.9	-3.5/11	0	16.2
15	Kabre	27.63	86.13	1755	-	8.3*	-	-	-	-	-	-	18.3	16.7*	1.6	/	2.7	4*	-1.3	/	-	15.5
16	Kakani	27.81	85.27	2030	3.6	19.5	18.5	1	0	0	0	3.6/29	14.7	13.9	0.8	20.5/16	3.0	4	-1.0	1/7	0	11.7
17	Kathmandu Airport	27.70	85.36	1337	2.2	15.2	14.5	1	0	0	0	2.2/29	17.1	19.2	-2.1	19/27	4.0	2.8	-1.2	2.3/14	0	13.1
18	Khokana	27.64	85.30	1309	0.0	18.2	0	0	0	0	0	NR	19.5	18.5*	1.0	22.2/26	0.8	0.9*	-0.1	-0.9/6	0	18.7
19	Khumaltar	27.65	85.33	1334	4.2	15.6	26.9	1	0	0	0	4.2/29	19.6	18.1	1.5	21.6/18	3.3	2	1.3	1.4/10	0	16.4
20	Manthali	27.39	86.06	497	0.0	12.6	0	0	0	0	0	NR	25.0	23.9*	1.1	27.7/6	6.5	7.4*	-0.9	4/10	0	18.5
21	Nagarkot	27.69	85.52	2147	3.4	21.3	16	1	0	0	0	3.4/29	13.6	12.9	0.7	16.3/17	3.6	2.9	0.7	1.4/9	0	10
22	Nuwakot	27.91	85.16	966	2.6	17.4	15	1	0	0	0	2.6/29	20.6	20.8	-0.2	23.2/30	8.3	8.4	-0.1	6.3/6	0	12.3
23	Panchkhal	27.65	85.62	857	0.0	12.4	0	0	0	0	0	NR	22.3	21.3	1.0	24.9/30	4.6	4.2	0.4	1.6/21	0	17.6
24	Rampur	27.65	84.35	189	2.0	16.5	12.1	1	0	0	0	1.6/29	22.7	22.1	0.6	25.7/29	-	8	-	/	0	-
25	Sindhuli Madhi	27.22	85.92	556	0.0	14.8	0	0	0	0	0	NR	23.5	22*	1.5	25.6/23	5.0	7.3	-2.3	1.1/10	0	18.5
<b>Gandaki Province</b>																						
1	Baglung	28.26	83.60	964	4.0	24.1	16.6	4	0	0	0	8.8/28	23.3	21	2.3	26.4/21	6.9	6.2	0.7	5/14	0	16.4
2	Bandipur	27.94	84.41	991	2.7	14.6	18.5	1	0	0	0	2.7/29	20.0	18.5*	1.5	23.5/31	7.1	6.7*	0.4	5/3	0	12.9
3	Chapkot	27.90	83.85	617	6.5	21.7	30	2	0	0	0	4.8/29	20.7	21.1	-0.4	23.8/20	7.7	7.8	-0.1	5.4/10	0	13.1
4	Damauli	27.97	84.27	347	-	16.9	-	-	-	-	-	-	21.2	21.1*	0.1	/	10.6	9.3*	1.3	/	-	10.7
5	Dumkauli	27.68	84.23	183	9.0	20.2	44.6	1	0	0	0	9/29	21.7	22.1	-0.4	25.5/20	9.6	9.1	0.5	7/11	0	12
6	Gorkha	27.97	84.59	724	3.6	20.5	17.6	1	0	0	0	3.3/29	18.6	19.4	-0.8	/	7.8	7.8	0.0	/	-	10.9
7	Humde	28.64	84.09	3401	23.0	6*	383.5	2	1	0	0	15/28	8.2	7*	1.2	/	-9.3	-8.9*	-0.4	/	-	17.6
8	Jomsom	28.78	83.73	2741	4.6	14.4	32	1	0	0	0	4.3/28	12.3	10.4	1.9	17.7/16	-1.6	-1.9	0.3	-5/9	0	13.9
9	Khairini Tar	28.03	84.09	515	5.7	20.4	27.9	2	0	0	0	3.5/29	21.5	21.4	0.1	24.5/23	9.0	8.4	0.6	6.4/11	0	12.4
10	Khudi Bazar	28.28	84.36	838	38.7	29.3	132	5	1	0	0	15/21	20.9	21.1	-0.2	23.2/20	5.7	7.1	-1.4	4/2	0	15.1
11	Kushma	28.22	83.68	900	-	24.7	-	-	-	-	-	-	21.2	21.4	-0.2	/	5.4	6.3	-0.9	/	-	15.8
12	Lete	28.63	83.61	2490	39.2	41.8	93.8	2	1	1	0	32/28	12.1	10.9*	1.2	19.5/12	0.0	-0.9*	0.9	-3/9	0	12
13	Lumle	28.30	83.82	1738	9.5	34.9	27.2	2	0	0	0	7.5/29	15.1	13.9	1.2	17.3/20	5.0	4.7	0.3	3.1/7	0	10.1
14	Malepatan	28.22	83.97	859	5.5	25.9	21.2	1	0	0	0	4.9/29	19.7	19.6	0.1	22.2/23	5.8	6.1	-0.3	3.6/10	0	13.9
15	Pokhara Airport	28.20	83.98	827	6.3	21.7	29	2	0	0	0	5.3/29	19.5	19.9	-0.4	21.9/20	7.9	7.1	0.8	6/8	0	11.6
16	Syangja	28.10	83.87	871	5.7	21.2	26.9	2	0	0	0	4.2/29	20.4	19.8	0.6	22.8/20	6.5	6.1	0.4	3.9/11	0	13.9
17	Thakmarpha	28.74	83.68	2655	11.3	11.2	101	2	0	0	0	9.7/28	14.0	11.3	2.7	/	-3.3	-2.3	-1.0	-6.2/9	-	17.3
<b>Lumbini Province</b>																						
1	Bhairahawa (Agric)	27.53	83.46	112	4.3	20.2	21.3	1	0	0	0	4.2/29	20.9	20.7	0.2	28.4/16	8.9	8.6	0.3	6/14	0.0	12.0
2	Bhairahawa Airport	27.51	83.42	108	4.5	20.8	21.8	1	0	0	0	4.1/29	21.1	20.2	0.9	26.7/29	9.0	8.7	0.3	6.1/16	0	12.1
3	Bijuwar Tar	28.10	82.85	835	15.2	25.6	59.4	2	1	0	0	10.3/28	24.0	22.7*	1.3	26.3/22	5.9	6.3*	-0.4	3.4/8	0	18.1
4	Ghorai	28.04	82.48	663	11.5	21.6	53.2	2	0	0	0	9.1/28	22.0	20.8	1.2	24.6/24	7.3	5.8	1.5	3.5/7	0.0	14.6
5	Gulariya	28.21	81.35	126	21.6	28.6	75.5	2	1	0	0	16.5/28	20.7	19*	1.7	26.4/24	7.2	8.4*	-1.2	3.8/5	0	13.5
6	Khajura	28.11	81.59	129	19.0	22.8	83.3	3	1	0	0	14.8/28	20.9	20.3	0.6	26/19	8.0	7.7	0.3	3.8/12	0	12.9
7	Khanchikot	27.92	83.13	1801	22.9	31.1	73.7	2	1	0	0	18.6/28	16.4	14.2	2.2	20.6/17	6.0	5.5	0.5	4.5/5	0	10.4
8	Libang Gaun	28.41	82.63	1314	30.2	33.7	89.6	3	1	0	0	20/28	20.3	19.3*	1.0	23.5/27	3.9	4.3*	-0.4	1.5/10	0	16.4
9	Lumbini	27.37	83.28	95	4.0	17.5	22.9	2	0	0	0	3/29	20.8	19.4*	1.4	25/24	8.7	8.5*	0.2	5.5/16	0.0	12.2
10	Nepalgunj (Reg.Off.)	28.05	81.62	141	15.9	22.8	69.7	2	1	0	0	12.5/28	20.8	20.1	0.7	25.9/24	8.5	7.8	0.7	5/11	0	12.3
11	Nepalgunj Airport	28.10	81.67	165	29.0	22	132	3	1	0	0	23/28	21.7	20	1.7	27/20	8.2	9	-0.8	3.5/5	0	13.5
12	Parasi	27.52	83.66	112	5.3	14.8	35.88	2	0	0	0	3.5/29	21.0	21.1*	-0.1	25.5/18	8.7	8.8*	-0.1	6/14	0	12.3
13	Semari	27.47	83.79	110	3.5	19.2	18.3	1	0	0	0	3.5/29	20.8	20.6	0.2	26/18	8.8	7.8	1.0	5.5/6	0.0	12.0
14	Tamghas	28.06	83.24	1547	18.6	28.6	65	3	0	0	0	9.7/29	16	15.3	0.46	19/19	4.9	4.4	0.55	3.5/6	0	10.8
15	Tansen	27.86	83.54	1183	4.81	25.8	18.6	2	0	0	0	3.5/29	20	19.3	0.69	22/30	8.3	6.6	1.71	7/3	0	11.7
16	Taulihawa	27.57	83.07	106	7.81	18.6	42	2	0	0	0	5.6/29	20	20.6	-0.3	25.5/24	9	8.8*	0.21	6.9/9	0	11.3



**Government of Nepal**  
**Ministry of Agriculture, Forest and Environment**  
**Department of Hydrology and Meteorology**  
**Climate Division (Climate Analysis Section)**  
 Babarmahal, Kathmandu

S.N	Station	Latitude	Longitude	Elevation	Precipitation							Temperature							DTR (°C)			
					Total (mm)	Normal	% of Normal	No. of Rainy Days				Maximum			Minimum							
								≥1.0mm	≥10.0mm	≥25.0mm	≥50.0mm	24hr Highest (mm)/Date	Average (°C)	Normal	Dep. form normal (°C)	Highest temp. / Date	Average (°C)	Normal		Dep. form normal (°C)	Lowest temp. / Date	No. of days with Tx>30°C
<b>Karnali Province</b>																						
1	Chaurjhari Tar	28.65	82.21	863	26.5	28.4	93.3	3	1	0	0	15/28	21	20	1.01	24.5/19	4.5	5.3	-0.75	2/8	0	16.5
2	Dailekh	28.84	81.71	1394	28.6	36.7	77.9	3	2	0	0	13.4/24	17	16.4	0.95	21/30	7.2	5.5	1.7	4.2/9	0	10.1
3	Dipal Gaun	29.26	82.22	2422	23.2	36.5	63.6	4	1	0	0	12.2/24	18	13.8	3.76	21.5/13	-6	-4.4	-1.63	-9.5/8	0	23.6
4	Dunai	28.95	82.90	2098	18.3	10	183	2	1	0	0	14.7/28	-	12.2*	-	/	-	-1.6*	-	/	-	-
5	Gamadi Shree Nagar	29.55	82.15	2113	19.1	51.4	37.2	2	1	0	0	10.2/28	15	15.8*	-0.5	20/21	2	2.7*	-0.73	-0.5/9	0	13.3
6	Jajarkot	28.70	82.20	1240	22	32.7	67.3	2	1	0	0	13.5/28	18	20.4*	-1.9	20.5/18	4.5	6.4*	-1.85	2.5/10	0	13.9
7	Jumla	29.27	82.18	2363	20.3	36.8	55.2	4	1	0	0	10.8/24	16	13.8	2.18	19.8/16	-5.3	-4.8	-0.52	-8.1/8	0	21.3
8	Jumla Airport	29.27	82.19	2384	20.3	28.5*	71.2	4	1	0	0	10.6/24	15	13.3*	1.82	18.6/13	-6.1	-5.2*	-0.93	-9/11	0	21.2
9	Manma	29.15	81.61	1729	35.9	62.4*	57.5	2	2	0	0	18.3/28	18	15.9*	1.72	21.2/17	4.6	3.8*	0.79	2.3/9	0	13.0
10	Mehalkuna	28.42	81.84	464	21.4	18.9*	113	3	1	0	0	13.6/28	23	22.7*	0.56	25.5/2	6.7	6.4*	0.27	3.6/9	0	16.6
11	Musikot (Rukumkot)	28.62	82.46	1412	30.3	30.5	99.3	3	1	0	0	17.8/28	19	18.3	0.67	22.4/17	5.7	4.6	1.07	3.5/8	0	13.3
12	Nagma	29.20	81.91	2017	35.91	51.3	70	2	2	0	0	18.3/28	16	15.7*	0.35	20.5/17	-0.5	-0.8*	0.32	-4/9	0	16.5
13	Pusma Camp	28.88	81.23	953	24.8	42.8	57.9	3	1	0	0	15.2/28	18	17.5	0.18	20/20	6.3	7.8	-1.45	3.2/5	0	11.3
14	Rara	29.54	82.08	2989	29.7	37.4*	79.4	2	2	0	0	17.5/28	11	8.6*	2.35	15/12	-4.1	-4.6*	0.51	-6.5/7	0	15.0
15	Salyan Bazar	28.38	82.14	1557	24.2	31.6	76.6	3	1	0	0	14.1/28	22	19.3	2.36	24/13	6.2	6.4	-0.22	4.4/8	0	15.5
16	Simikot	29.97	81.82	2993	37.2	29.7*	125	3	2	0	0	16.7/28	11	8.2*	2.32	15.5/16	-3.6	-5.1*	1.49	-8.2/29	0	14.1
17	Surkhet Airport	28.59	81.64	720	32.3	39.3	82.2	3	1	0	0	16.1/28	21	20.5	0.98	24.1/18	5.2	5.2	0.03	1.5/8	0	16.2
18	Talcha	29.52	82.15	2750	21.6	24*	90	2	1	0	0	12.2/24	13	10.7*	2.22	17.6/16	-1	0*	-1.05	-4.1/29	0	14.0
<b>Sudurpaschim Province</b>																						
1	Baitadi (Gothalapani)	29.56	80.41	1352	44.0	42.8	102.8	2	2	0	0	22.5/28	-	18.3*	-	/	3.7	3.1*	0.64	1/25	-	-
2	Bajura (Martadi)	29.46	81.48	1598	51.0	64.7	78.8	2	2	1	0	27.4/24	17	16.1*	1.35	21/30	4.5	3.2*	1.28	1.5/24	0	13.0
3	Chainpur (East)	29.55	81.20	1405	27.8	42.6*	65.3	2	2	0	0	17.3/24	19	17.8*	1.53	22.2/31	2.9	3.8*	-0.85	0.6/10	0	16.4
4	Chisapani (Karnali)	28.65	81.29	201	22.4	34.3	65.3	2	1	0	0	16.8/28	20	19.4	0.95	23.6/21	11	10.4	0.11	8/9	0	9.8
5	Dadeldhura	29.30	80.59	1879	55.6	50.4	110.3	3	2	1	0	26/24	16	14.6	1.53	21.4/17	4	3.7	0.33	0.2/24	0	12.1
6	Darchula	29.84	80.55	945	49.6	52.4*	94.7	2	2	1	0	30.1/28	21	20*	1.03	24.5/31	5	5.9*	-0.88	2.5/10	0	16.0
7	Dhangadhi (Attariya)	28.81	80.56	184	19.3	27.9	69.2	3	1	0	0	10.9/28	21	20	0.82	26.2/19	8.7	7.4	1.27	4.6/10	0	12.2
8	Dipayal	29.26	80.94	563	29.6	45.7	64.8	2	2	0	0	15.6/24	23	22.4	0.66	26.4/31	4.2	5	-0.77	0.8/10	0	18.8
9	Godavari (West)	28.88	80.58	280	28.0	39	71.8	3	1	0	0	16.5/28	21	20.2	1.19	27/19	8.8	9.6	-0.79	5/16	0	12.6
10	Mahendra Nagar	28.95	80.23	197	27.4	34.6	79.2	2	1	0	0	21.6/28	21	20	0.95	26.6/19	7.7	7.4	0.26	4.2/10	0	13.3
11	Mangalsen	29.14	81.25	1310	34.5	63.7	54.2	3	2	0	0	21.8/28	15	17.9*	-3.4	19.6/31	4.6	5*	-0.43	2.5/9	0	10.0
12	Patan new	29.47	80.55	1292	56.8	48*	118.3	3	2	2	0	26.2/24	20	17*	2.7	23/17	3.6	3.8*	-0.21	1.5/9	0	16.1
13	Tikapur	28.54	81.12	149	14.9	38.1	39.1	2	0	0	0	9.9/28	20	20.1	0.13	25.5/23	6.5	7.1	-0.55	-3.3/5	0	13.7

**Note:**

- This summary is prepared based on the precipitation and temperature recorded at 126 meteorological stations.
- Normal precipitation/temperature is the average of the monthly precipitation/temperature for the period of 1991-2020. An asterisk (\*) indicates locations where normal data are unavailable; in such cases, the values are average over the available data period. In case of precipitation, less than 90% of normal precipitation is considered as below normal, 90 to 110% is considered as near normal, and more than 110% of normal precipitation is considered as above normal precipitation for the month.
- Abbreviation: "No." = number; "hr" = hour; "mm" = millimeter; "temp" = temperature; "/" or "-" = Data Not Available; "Dep." = departure; "Tx" = Maximum temperature; "DTR" = Diurnal Temperature Range

**Please report any errors or inaccuracies in this document to [climateupdates.dhm@gmail.com](mailto:climateupdates.dhm@gmail.com)  
 Or contact us by phone at 015319007.**