

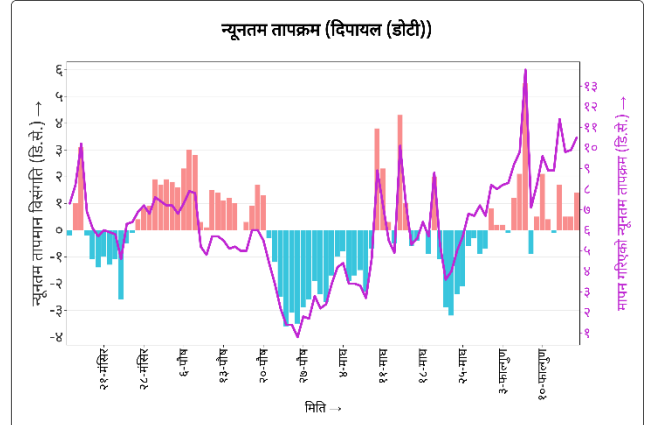
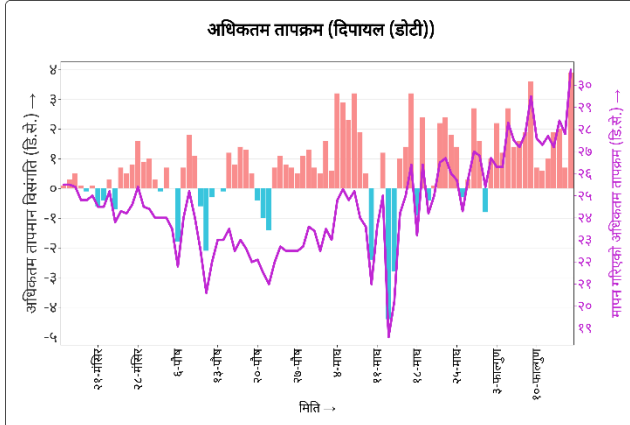
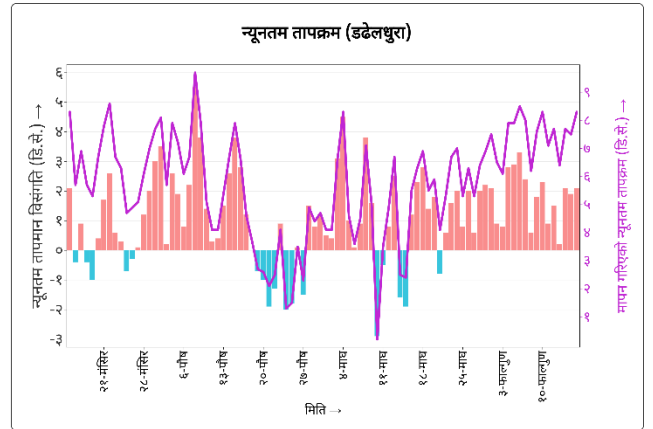
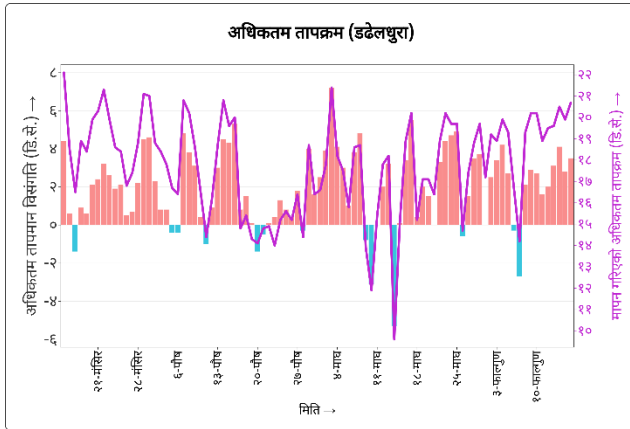
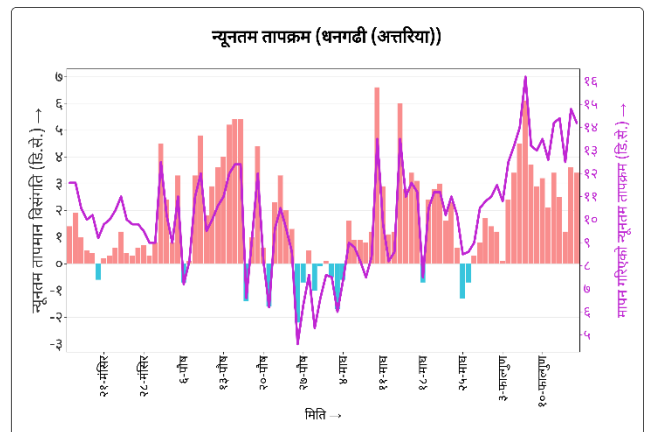
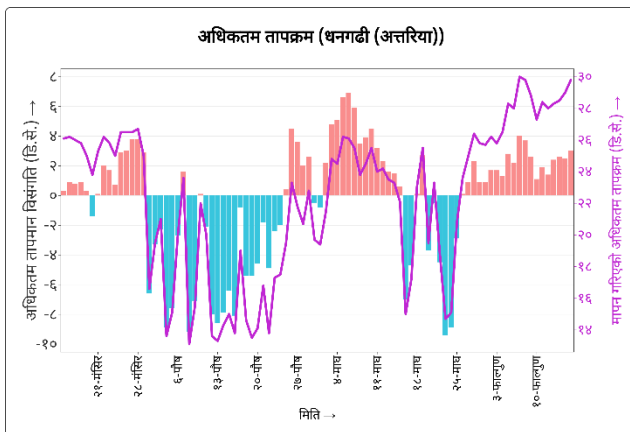


नेपाल सरकार
ऊर्जा, जलस्रोत तथा सिंचाइ मन्त्रालय
जल तथा मौसम विज्ञान विभाग
हावापानी विज्ञान महाशाखा, हावापानी विश्लेषण शाखा
बबरमहल, काठमाडौं

२०८२ फाल्गुण १६

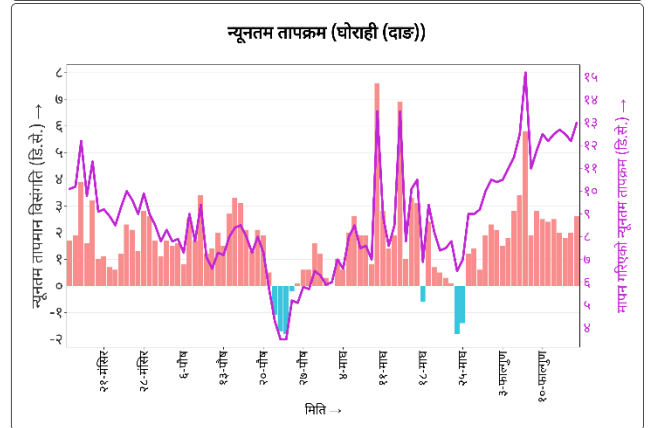
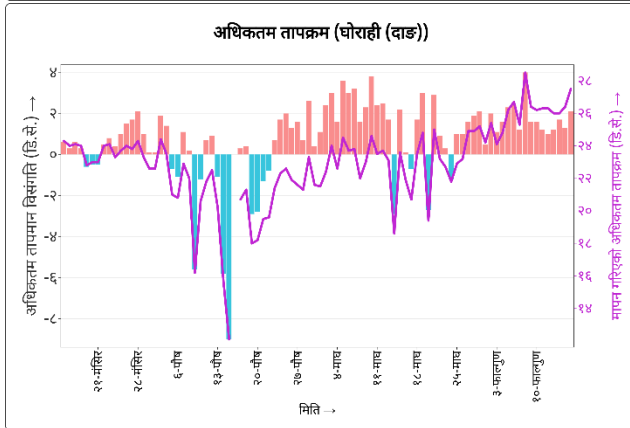
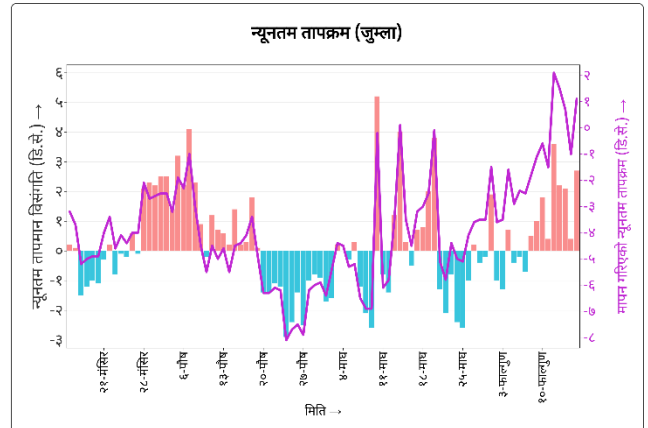
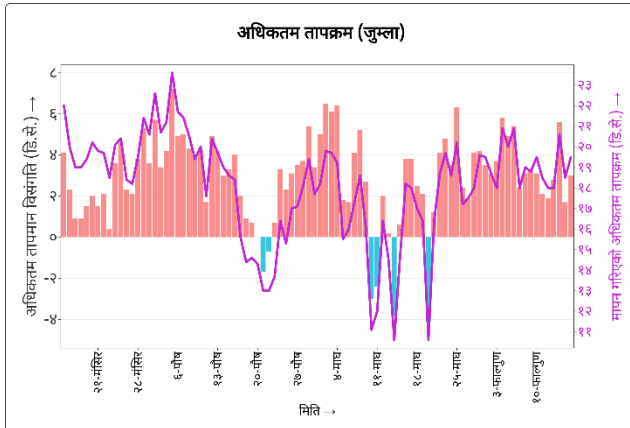
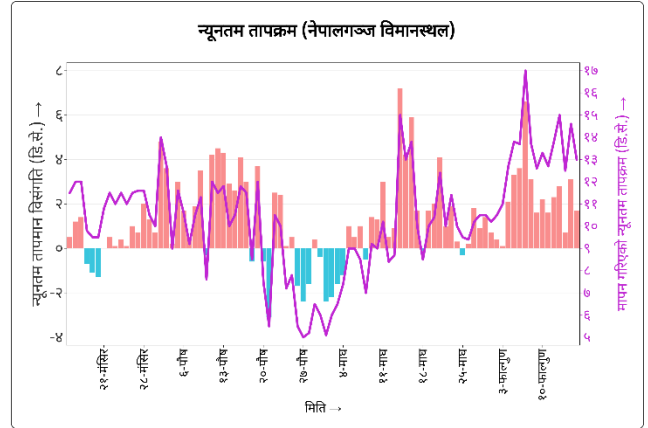
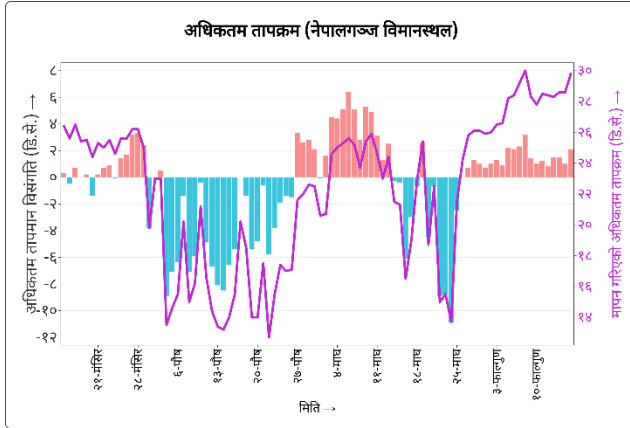
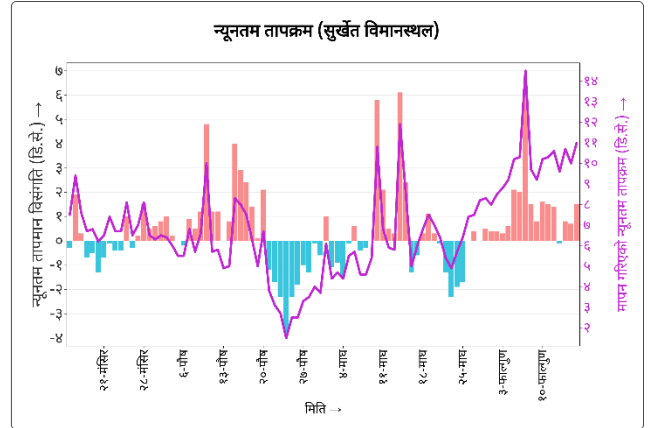
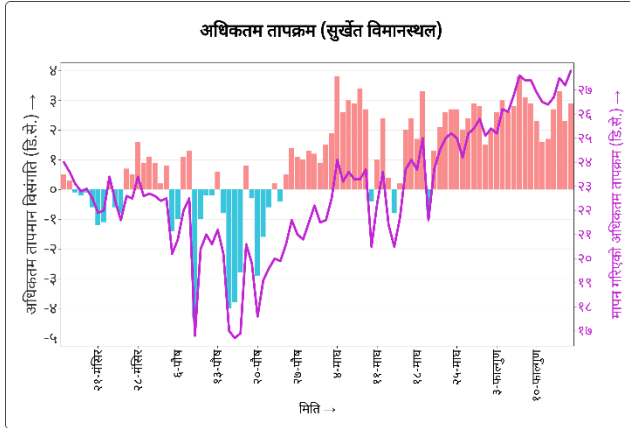
हिउँद अवधि (मंसिर १६ - फागुन १६, २०८२) तापक्रम अनुगमन

— मापन गरिएको तापक्रम ■ सरदरबाट विचलन (धनात्मक) ■ सरदरबाट विचलन (ऋणात्मक) *डि.से. → डिग्री सेल्सियस



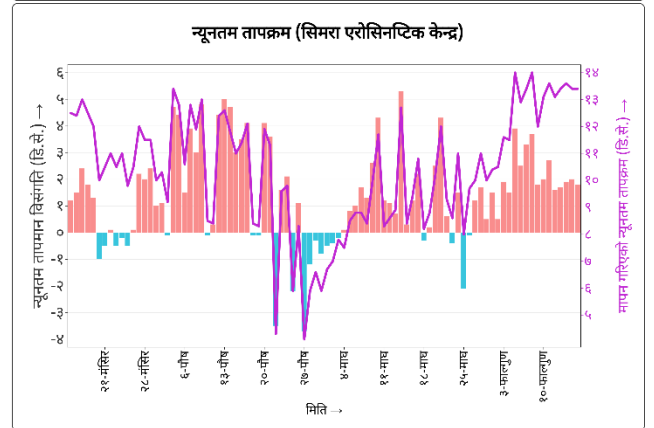
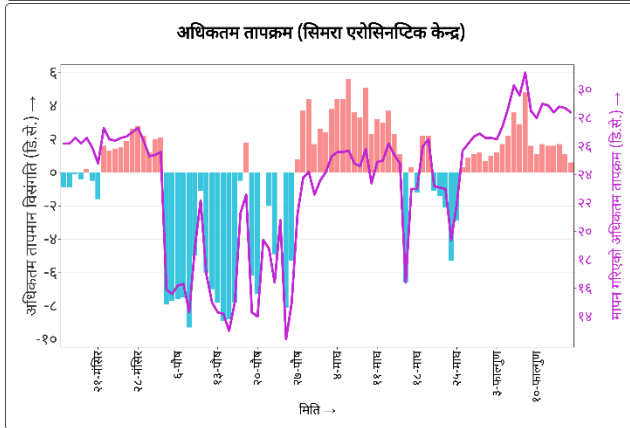
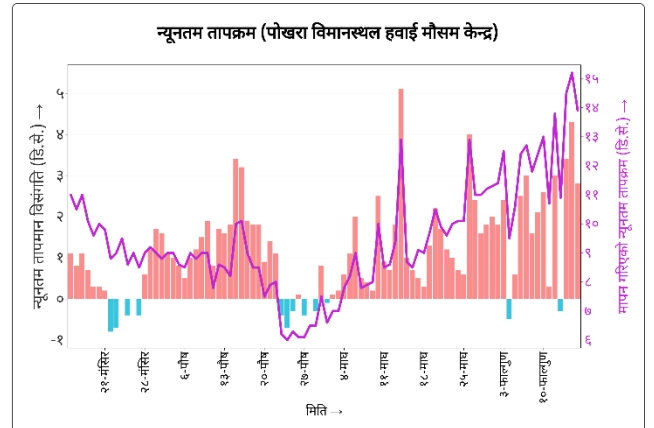
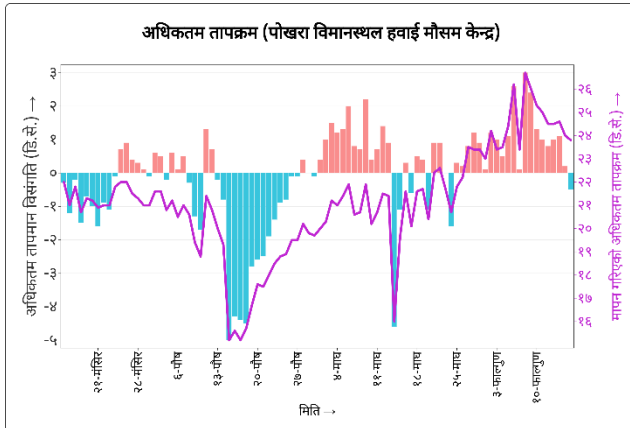
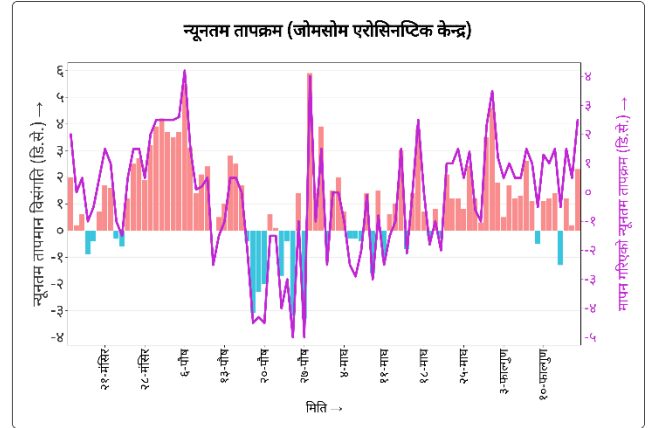
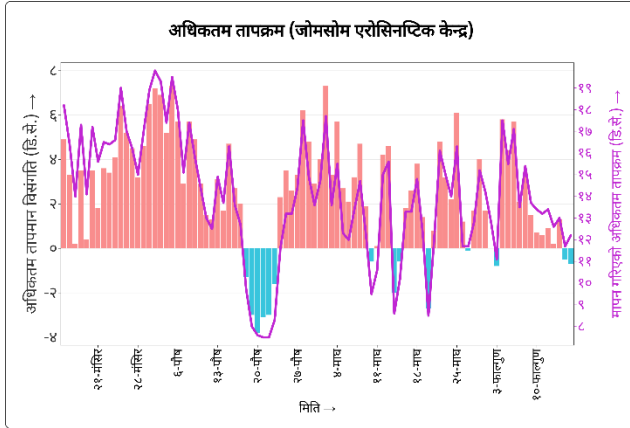
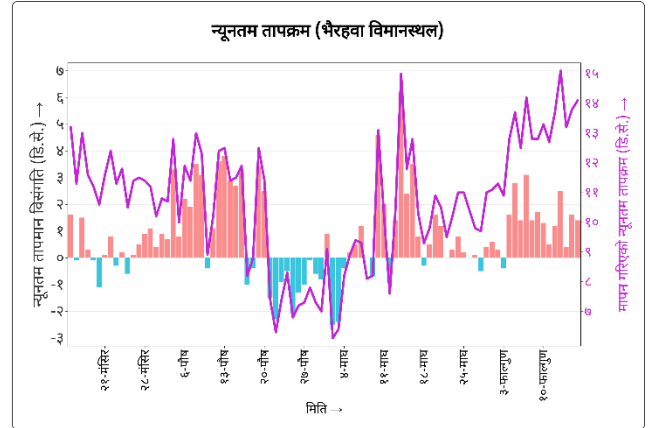
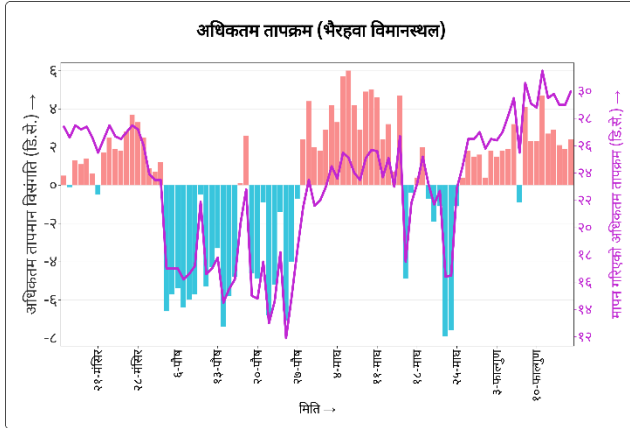


नेपाल सरकार
ऊर्जा, जलस्रोत तथा सिंचाइ मन्त्रालय
जल तथा मौसम विज्ञान विभाग
हावापानी विज्ञान महाशाखा, हावापानी विश्लेषण शाखा
बबरमहल, काठमाडौँ



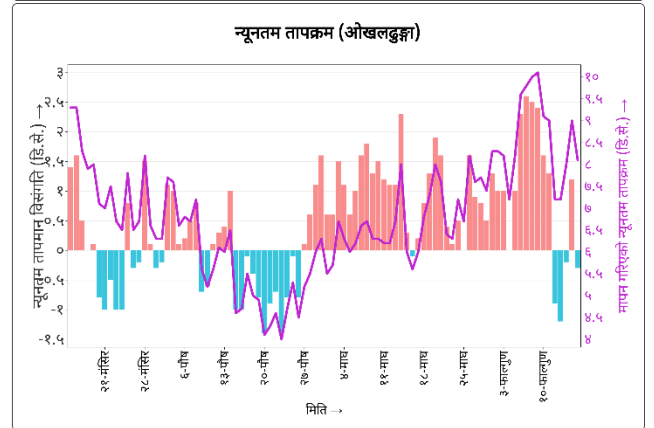
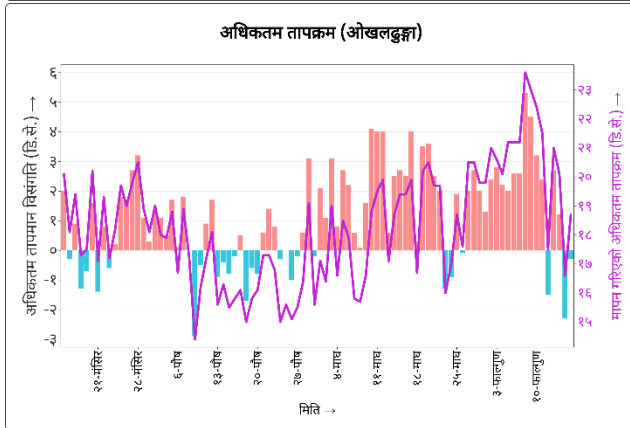
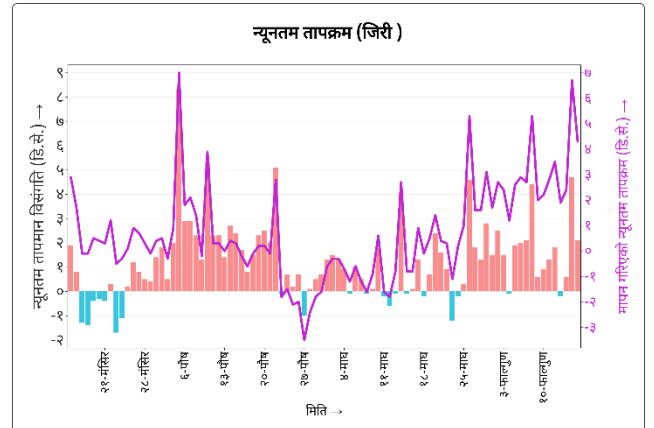
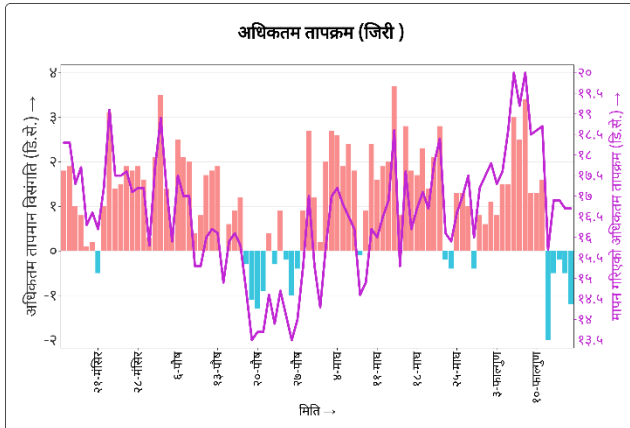
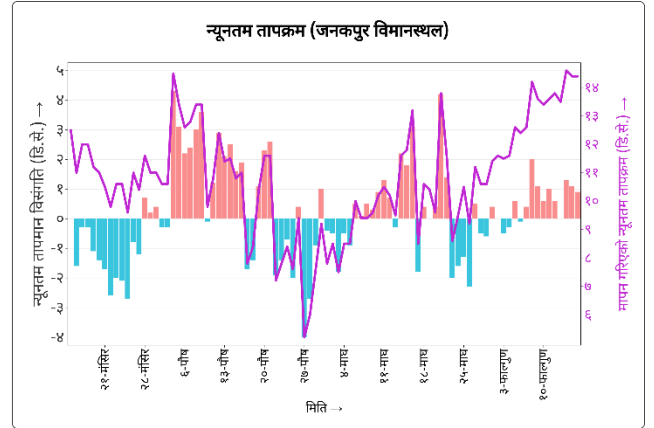
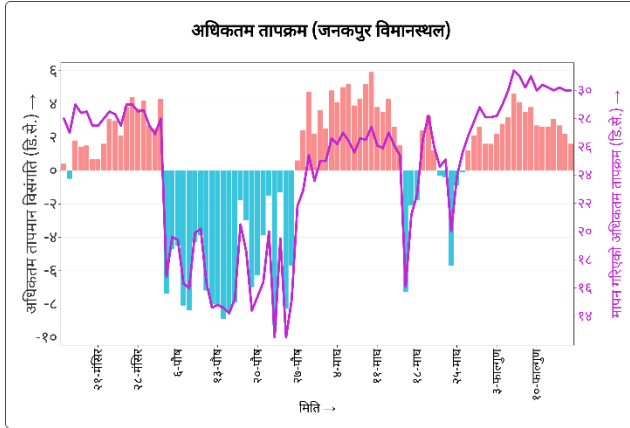
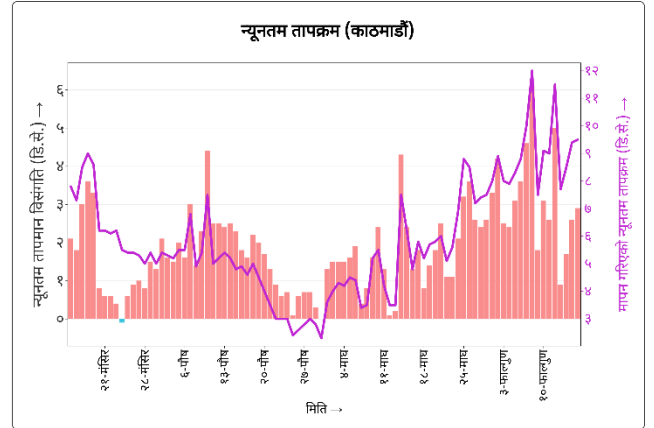
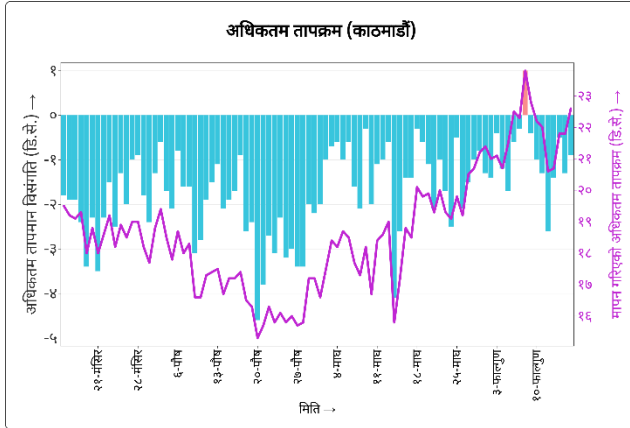


नेपाल सरकार
ऊर्जा, जलस्रोत तथा सिंचाइ मन्त्रालय
जल तथा मौसम विज्ञान विभाग
हावापानी विज्ञान महाशाखा, हावापानी विश्लेषण शाखा
बबरमहल, काठमाडौं





नेपाल सरकार
ऊर्जा, जलस्रोत तथा सिंचाइ मन्त्रालय
जल तथा मौसम विज्ञान विभाग
हावापानी विज्ञान महाशाखा, हावापानी विश्लेषण शाखा
बबरमहल, काठमाडौं





नेपाल सरकार
ऊर्जा, जलस्रोत तथा सिंचाइ मन्त्रालय
जल तथा मौसम विज्ञान विभाग
हावापानी विज्ञान महाशाखा, हावापानी विश्लेषण शाखा
बबरमहल, काठमाडौं

