

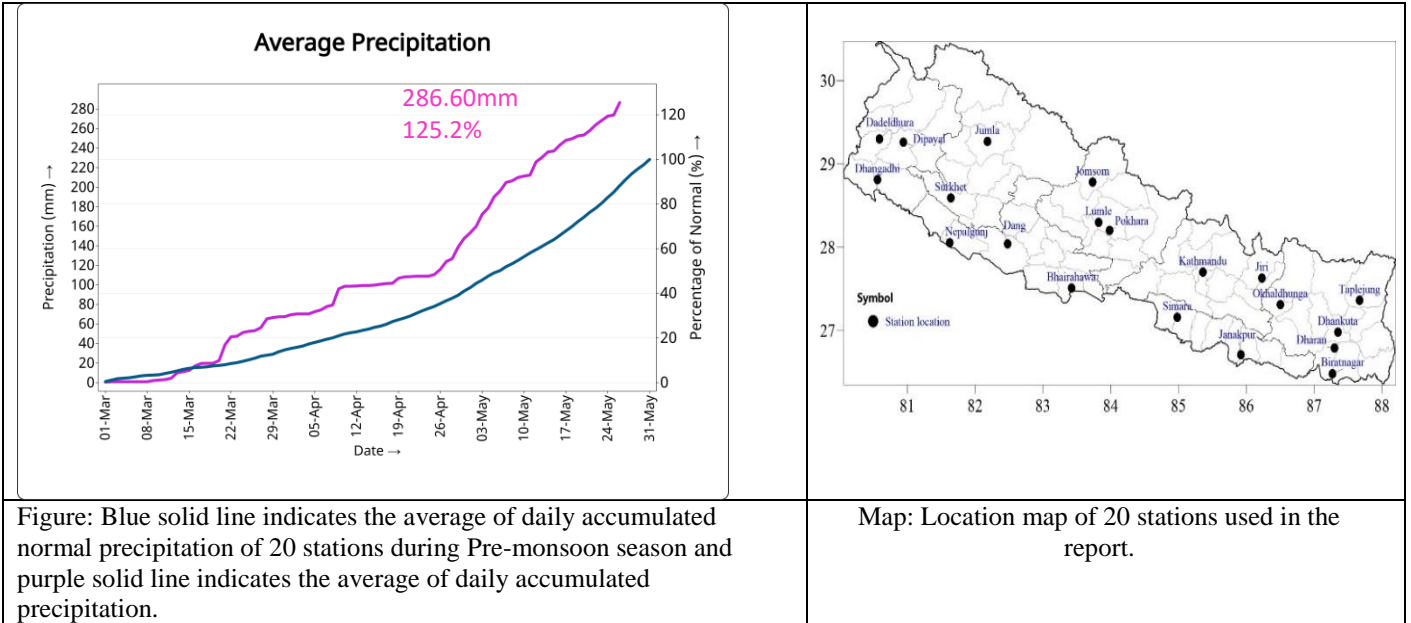


Government of Nepal
Ministry of Energy, Water Resource and Irrigation
Department of Hydrology and Meteorology
Climate Division (Climate Analysis Section)
 Babarmahal, Kathmandu

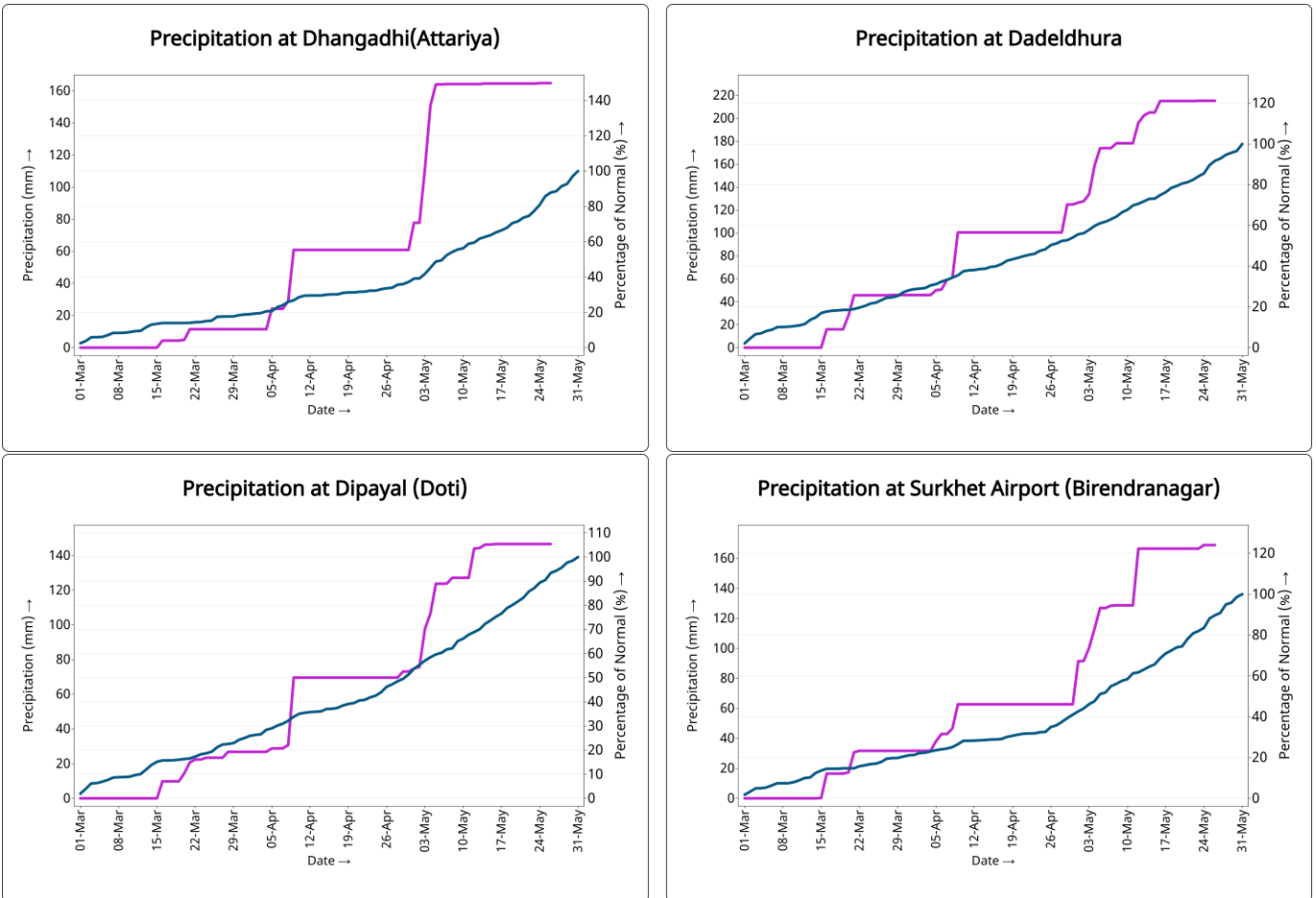
26th May 2026

Pre-monsoon (March – May, 2026) Precipitation Monitoring

Average precipitation monitoring of 20 stations: — Daily accumulated precipitation — Daily accumulated normal *mm → millimeter



Precipitation Monitoring of individual stations:





Government of Nepal
Ministry of Energy, Water Resource and Irrigation
Department of Hydrology and Meteorology
Climate Division (Climate Analysis Section)
Babarmahal, Kathmandu

— Daily accumulated precipitation — Daily accumulated normal *mm → millimeter

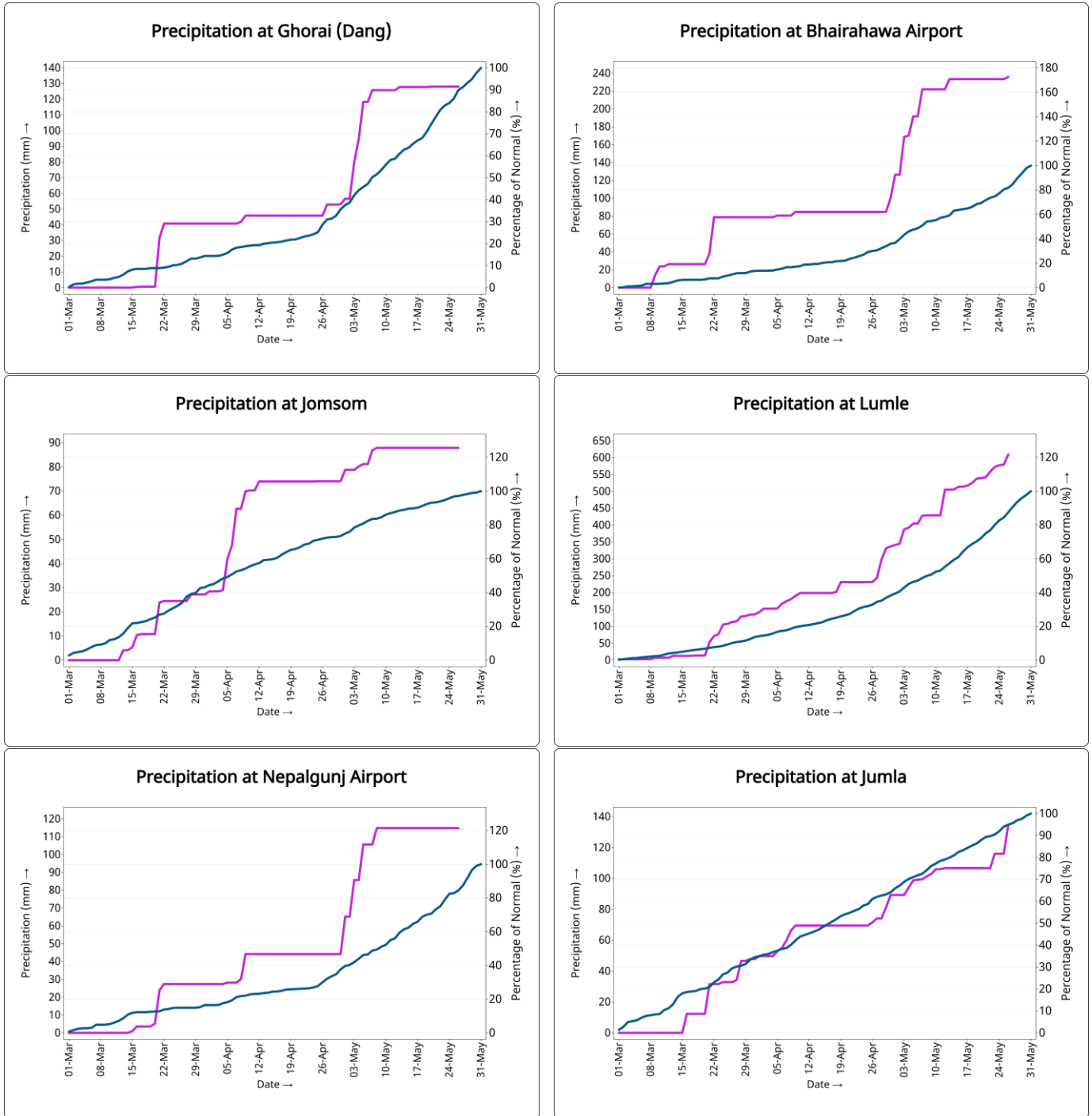


Figure: The blue lines in the above graphs indicate daily accumulated normal precipitation during Pre-monsoon season. Normal rainfall is the average of precipitation over 30 years period from 1991 -2020 and purple lines in above graphs indicate the daily accumulated precipitation of this Pre-Monsoon season



Government of Nepal
Ministry of Energy, Water Resource and Irrigation
Department of Hydrology and Meteorology
Climate Division (Climate Analysis Section)
Babarmahal, Kathmandu

— Daily accumulated precipitation — Daily accumulated normal *mm → millimeter

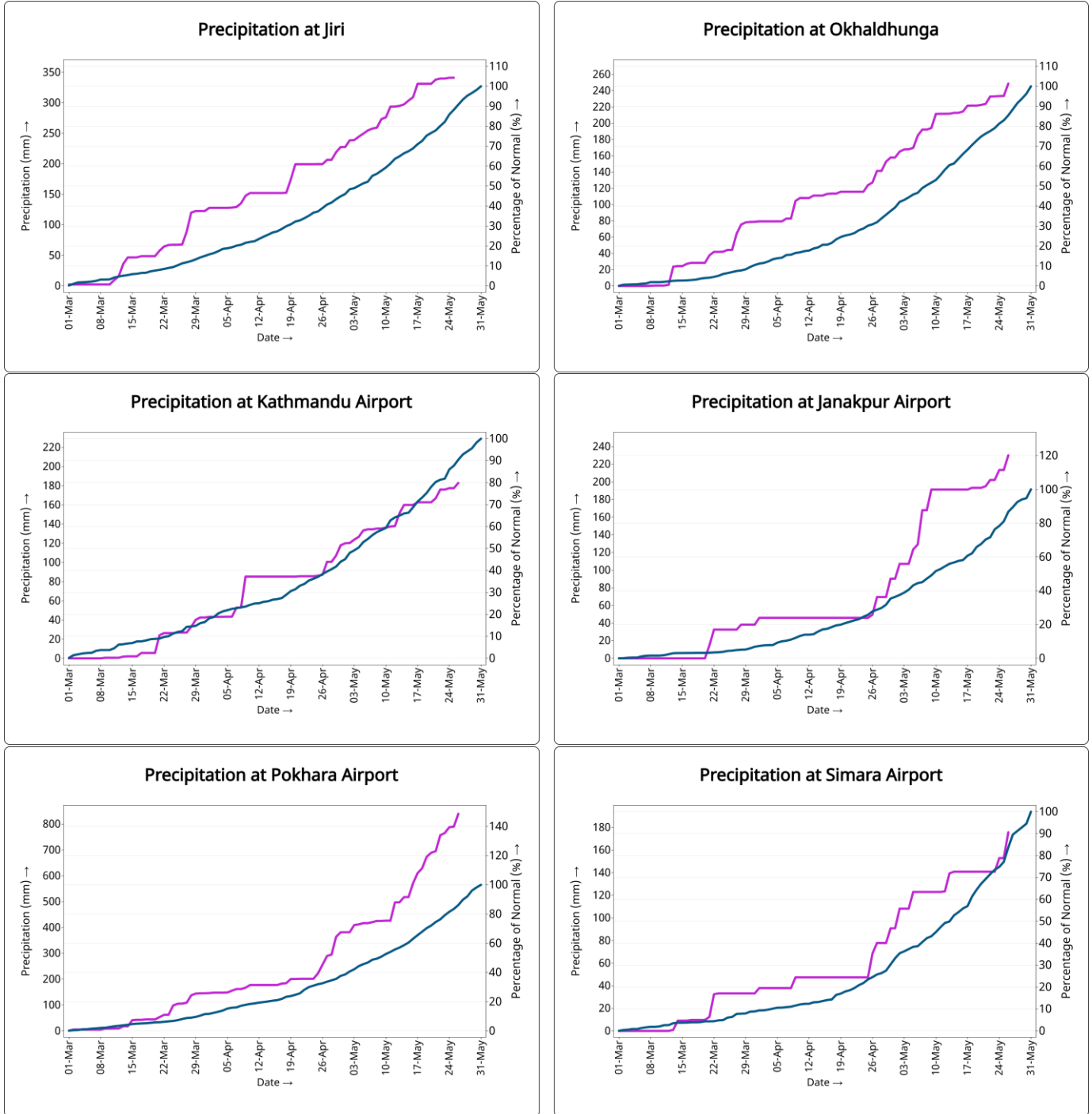


Figure: The blue lines in the above graphs indicate daily accumulated normal precipitation during Pre-monsoon season. Normal rainfall is the average of precipitation over 30 years period from 1991 -2020 and purple lines in above graphs indicate the daily accumulated precipitation of this Pre-Monsoon season



Government of Nepal
Ministry of Energy, Water Resource and Irrigation
Department of Hydrology and Meteorology
Climate Division (Climate Analysis Section)
Babarmahal, Kathmandu

— Daily accumulated precipitation — Daily accumulated normal *mm → millimeter

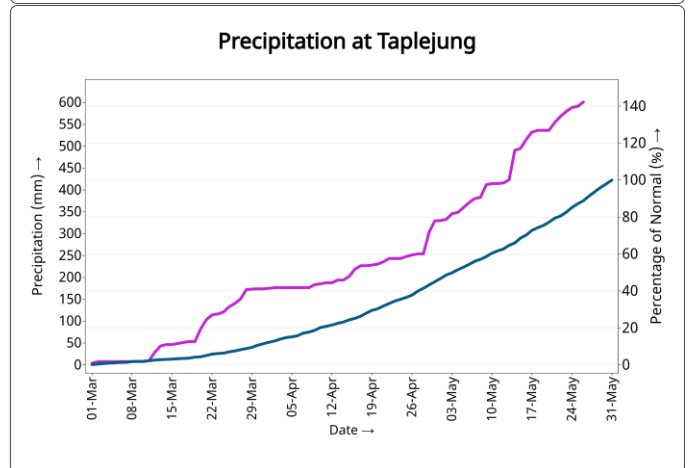
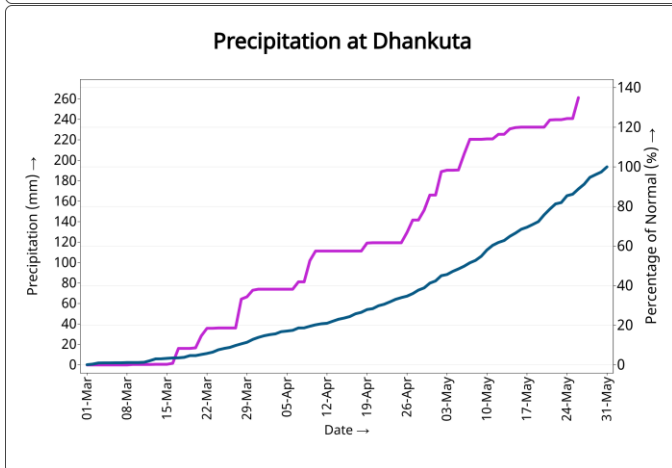
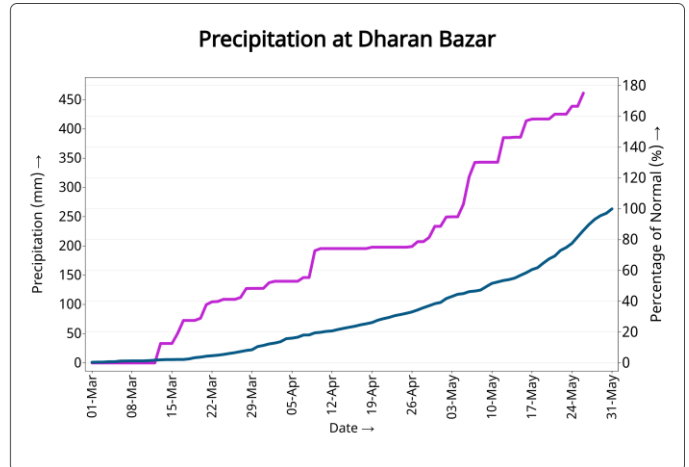
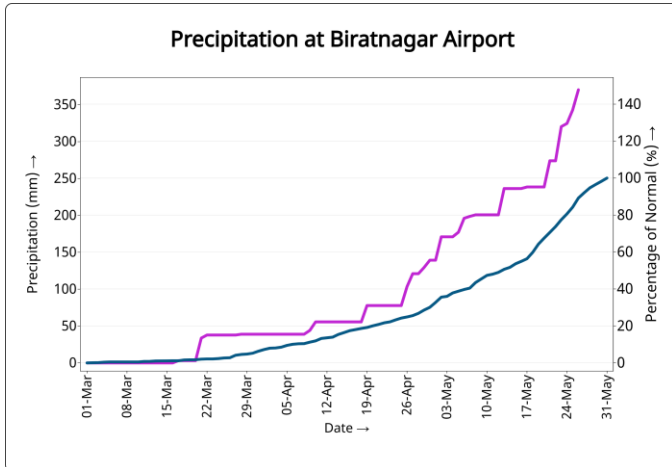


Figure: The blue lines in the above graphs indicate daily accumulated normal precipitation during Pre-monsoon season. Normal rainfall is the average of precipitation over 30 years period from 1991 -2020 and purple lines in above graphs indicate the daily accumulated precipitation of this Pre-Monsoon season