



**Government of Nepal**  
**Ministry of Energy, Water Resource and Irrigation**  
**Department of Hydrology and Meteorology**  
**Climate Division (Climate Analysis Section)**  
Babarmahal, Kathmandu

**January 26, 2026**

**Preliminary Precipitation and Temperature Summary**  
**December 2025**

**Highlights**

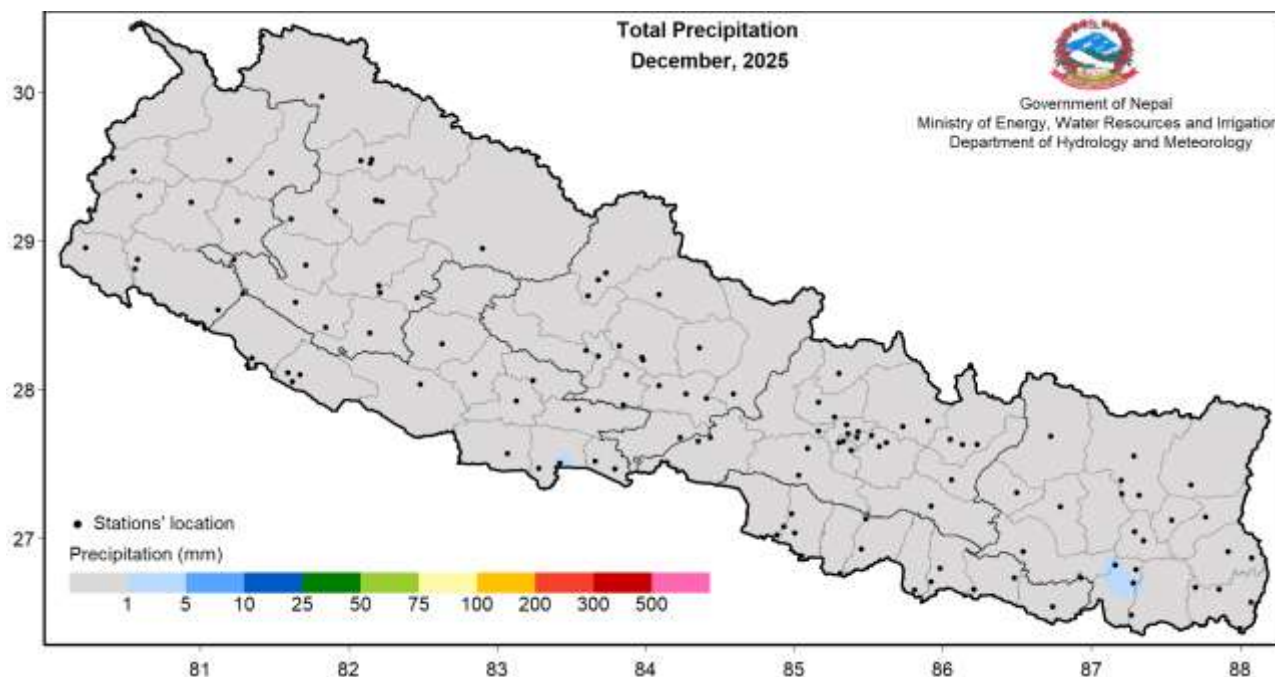
December 2025 experienced below-normal precipitation, with a monthly average precipitation of 0 mm against the climatological normal of 9 mm (1991-2020), amounting to 0% of normal. The southern parts of the country experienced below normal maximum temperatures, while the northern regions recorded above normal maximum temperatures. Most areas of the country also observed above-normal minimum temperatures.

**Synoptic Sequence**

Although a partial influence of westerly wind was present, no major synoptic-scale atmospheric conditions were observed to support precipitation, resulting in no precipitation.

**Precipitation**

Nepal recorded no precipitation during December. The light blue shading represents water collected from dew rather than rainfall (Figure 1). Only rain-gauge accumulations of  $\geq 1$  mm per day are classified as precipitation.



*Figure 1: Total precipitation in December 2025.*



Government of Nepal  
Ministry of Energy, Water Resource and Irrigation  
Department of Hydrology and Meteorology  
Climate Division (Climate Analysis Section)  
Babarmahal, Kathmandu

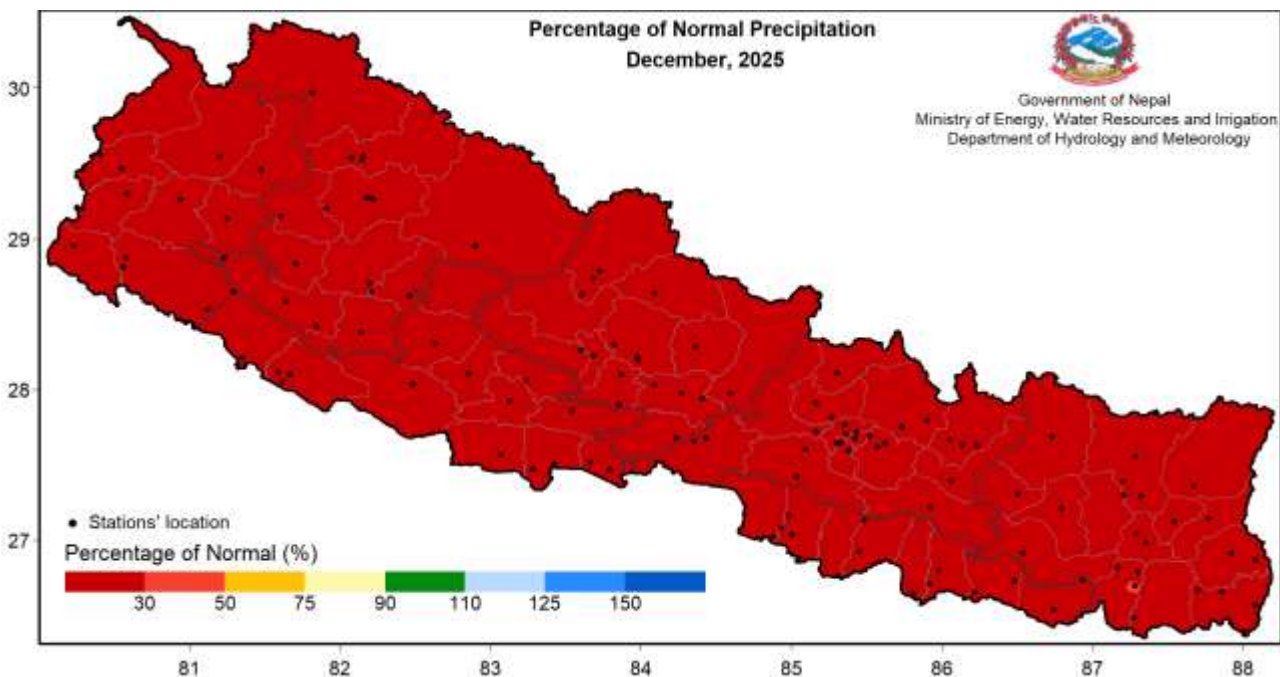


Figure 2: Percentage of normal precipitation in December 2025.

Compared to normal December precipitation, 0% of normal precipitation was observed across the country (Figure 3). As none of the stations in Nepal recorded any precipitation, the number of rainy days is zero at all stations. December experienced below normal precipitation for the fourth consecutive year. The bar graph of annual December precipitation indicates a declining trend since the beginning of this century, with only five out of the last 25 years recording above-normal precipitation in December (Figure 4).

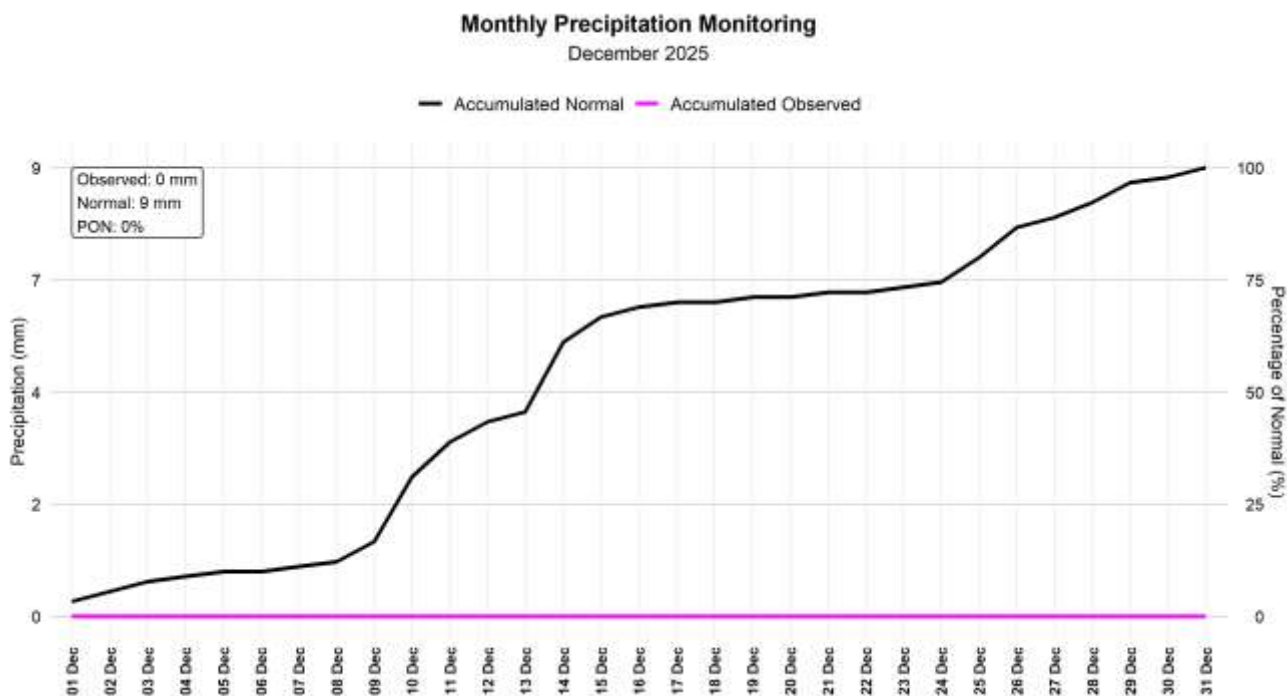


Figure 3: Cumulative average of daily normal and observed precipitation during December 2025.



**Government of Nepal**  
**Ministry of Energy, Water Resource and Irrigation**  
**Department of Hydrology and Meteorology**  
**Climate Division (Climate Analysis Section)**  
Babarmahal, Kathmandu

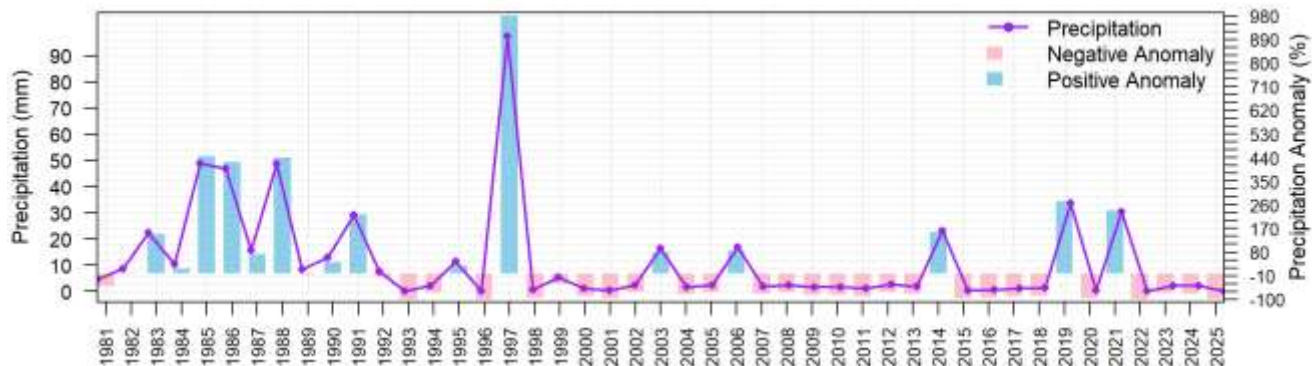


Figure 4: All Nepal monthly total precipitation of December from 1981 to 2025 (average of 103 stations)

### Maximum Temperature

Maximum temperature of Terai remained above 18°C, while most of the northern part of country recorded below 9°C (Figure 5).

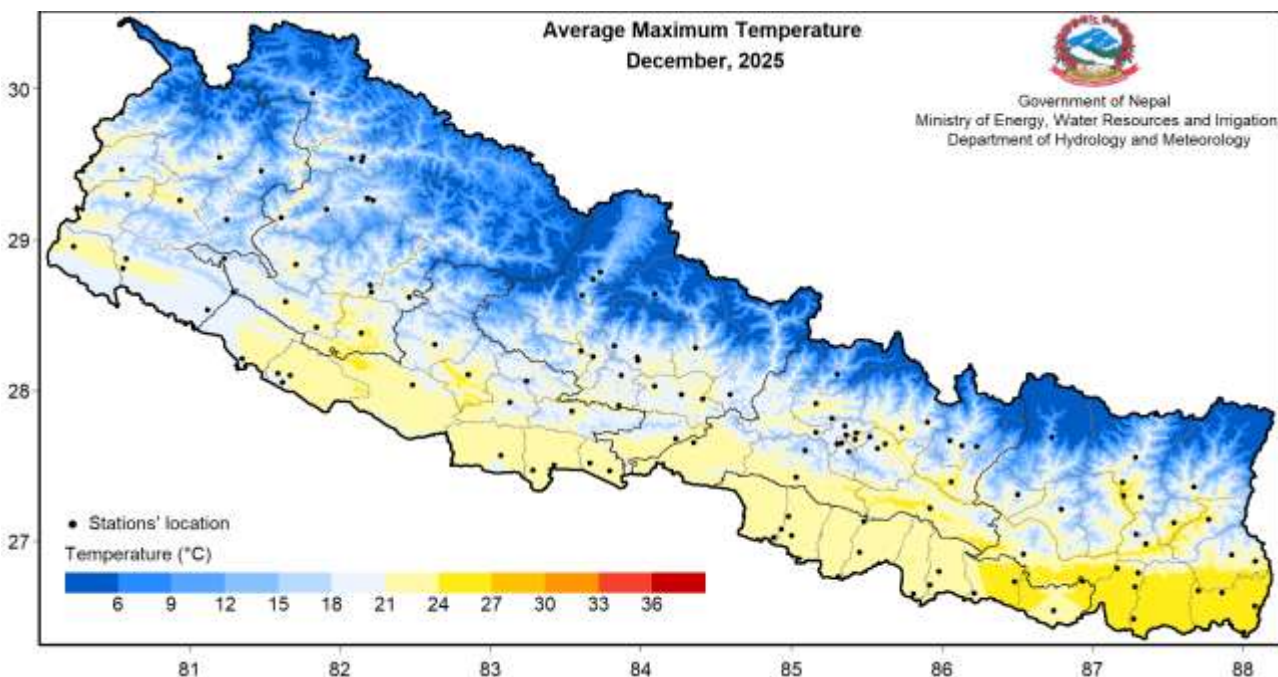


Figure 5: Maximum Temperature in December 2025.

Damak station of Jhapa district and Humde station of Manang district recorded the highest and lowest monthly maximum temperature of 26.7°C and 12.5°C respectively. Similarly, the highest monthly anomaly of 5.7°C was recorded at 'Kanyam Tea Estate' station and the lowest of -4.0°C was recorded at Mangalsen station (Annex 1).



Government of Nepal  
Ministry of Energy, Water Resource and Irrigation  
Department of Hydrology and Meteorology  
Climate Division (Climate Analysis Section)  
Babarmahal, Kathmandu

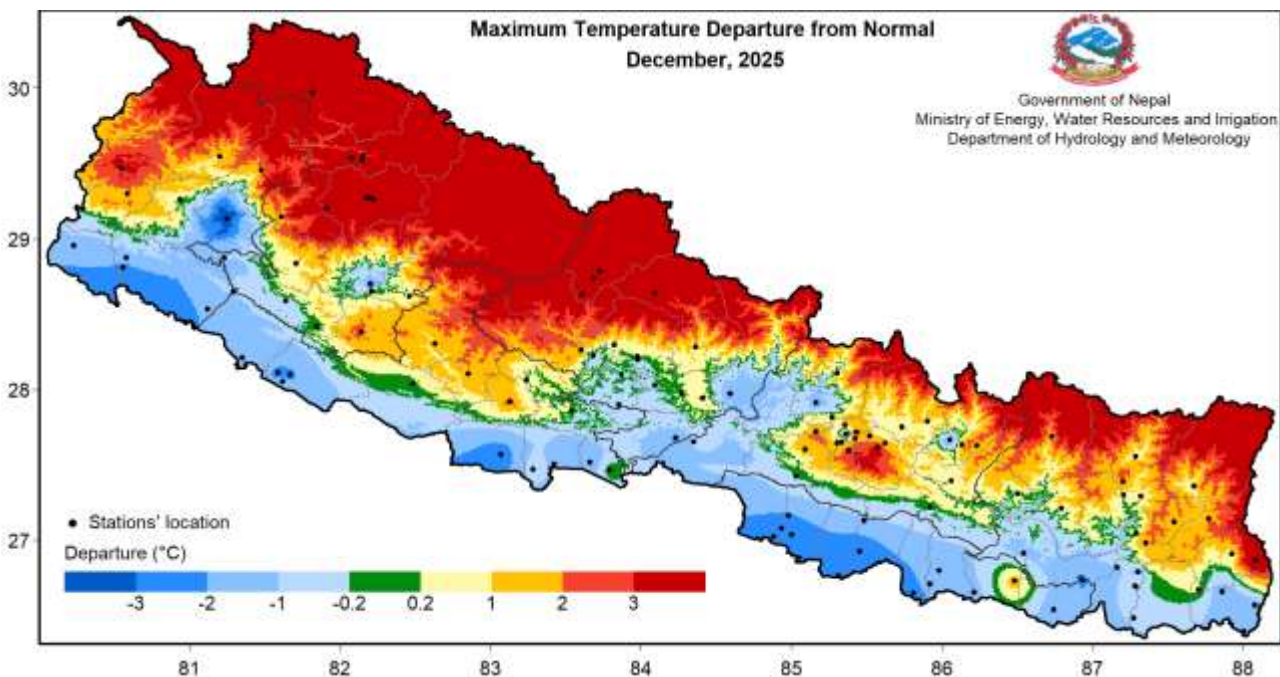


Figure 6: Departure from normal maximum temperature in December 2025.

The highest daily maximum temperature of 33.0 °C was recorded at Lahan station of Siraha district on 13<sup>th</sup> December while the lowest daily maximum temperature of 8.0 °C was recorded at Humde station of Manang district on 3<sup>rd</sup> December.

Most of Terai region recorded the below normal maximum temperature whereas Himalayan region showed the above normal maximum temperature. Most of Karnali province, Gandaki province and some northern parts of Sudurpashchim province, Bagmati province and Koshi province showed the highest departure from normal (maximum of +3 to above) (Figure 6). On an average, the country's maximum temperature remained near normal but terai belt remained cooler than the normal value whereas Himalayan region remained much warmer than the normal value (Figure 6&7).

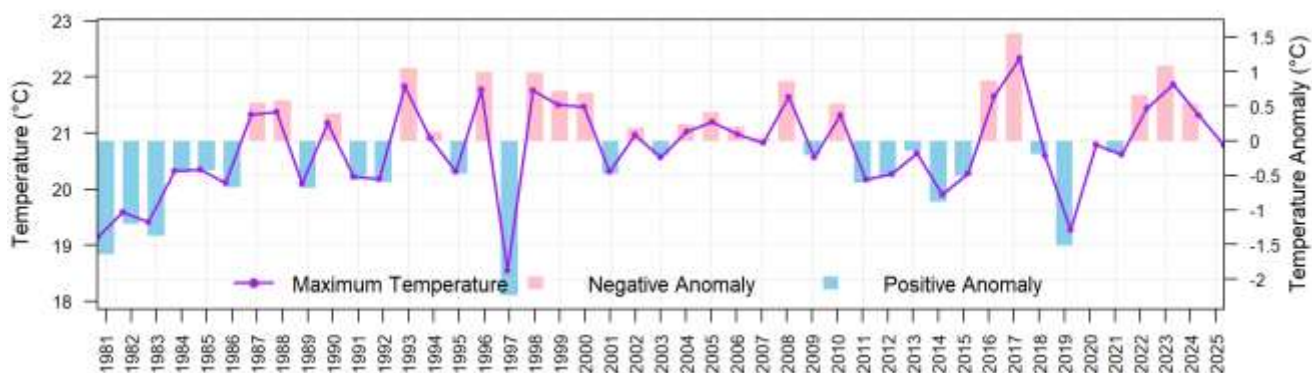


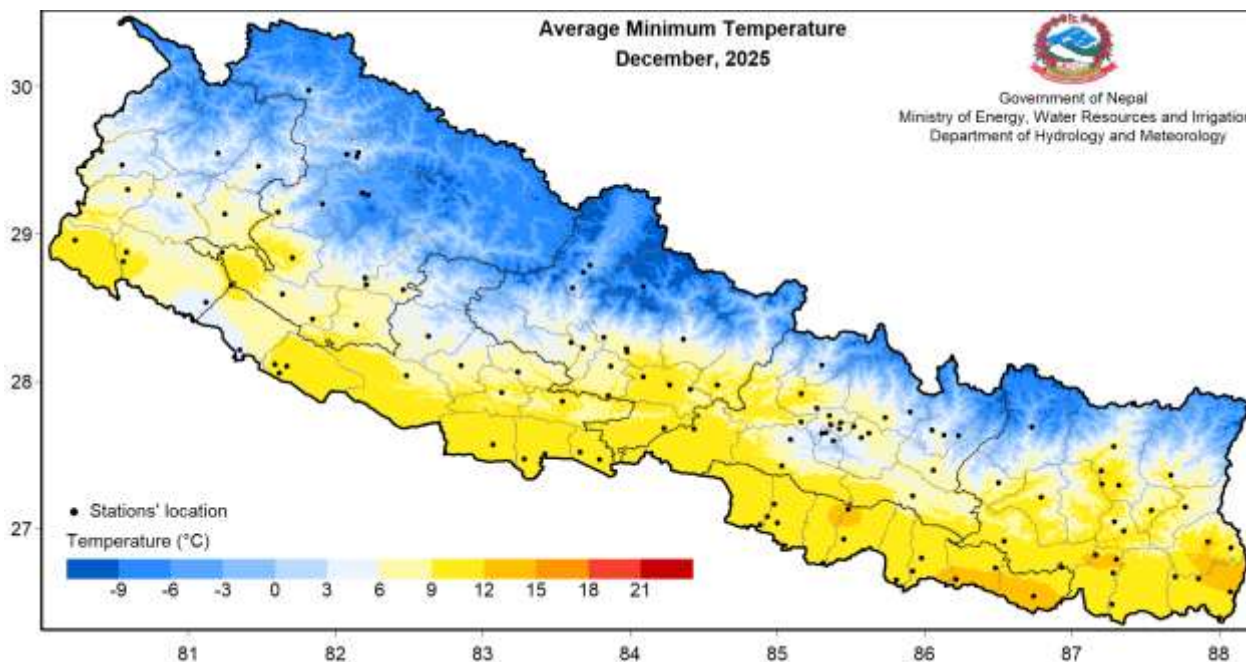
Figure 7: Monthly average maximum temperature anomaly of December from 1981 to 2025 of 60 stations (average of monthly average maximum temperature at stations having long term data).



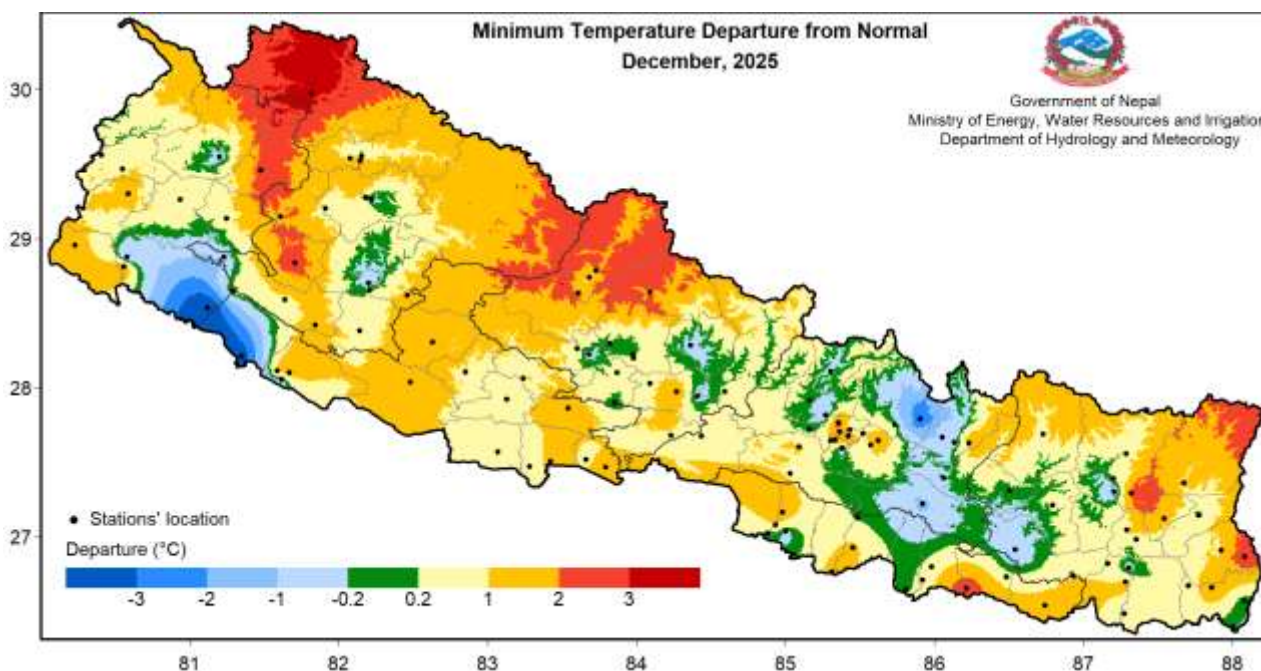
**Government of Nepal**  
**Ministry of Energy, Water Resource and Irrigation**  
**Department of Hydrology and Meteorology**  
**Climate Division (Climate Analysis Section)**  
Babarmahal, Kathmandu

### Minimum Temperature

The minimum temperature of Terai remained above 6°C and below 15°C except in Bardiya and Kailali districts the minimum temperature was below 6 °C. In general, most areas of the Himalayan region, the minimum temperature remained below 3 °C and reached below -9°C in few parts (Figure 8).



*Figure 8: Minimum Temperature in December 2025.*



*Figure 9: Departure from normal minimum temperature in December 2025.*

Except most parts of Bardiya and Kailali district, some parts of Bagmati province and few other isolated parts of country, Nepal recorded above normal minimum temperature on December. The average minimum temperature is higher than that of last year (Figure 10).



**Government of Nepal**  
**Ministry of Energy, Water Resource and Irrigation**  
**Department of Hydrology and Meteorology**  
**Climate Division (Climate Analysis Section)**  
Babarmahal, Kathmandu

Karmaiya station and Humde station of Sarlahi district and Manang district recorded the highest and lowest monthly minimum temperature of 13.1°C and -5.6°C respectively. Similarly, the highest monthly anomaly of 3.4°C was recorded at Simikot station and the lowest anomaly of -4.4°C was recorded at Tikapur station (Annex 1). The highest daily minimum temperature of 15.2°C was recorded at Damak station of Jhapa on 19<sup>th</sup> December, while the lowest daily minimum temperature of -8.2°C was recorded at Humde station of Manang district on 31<sup>st</sup> December

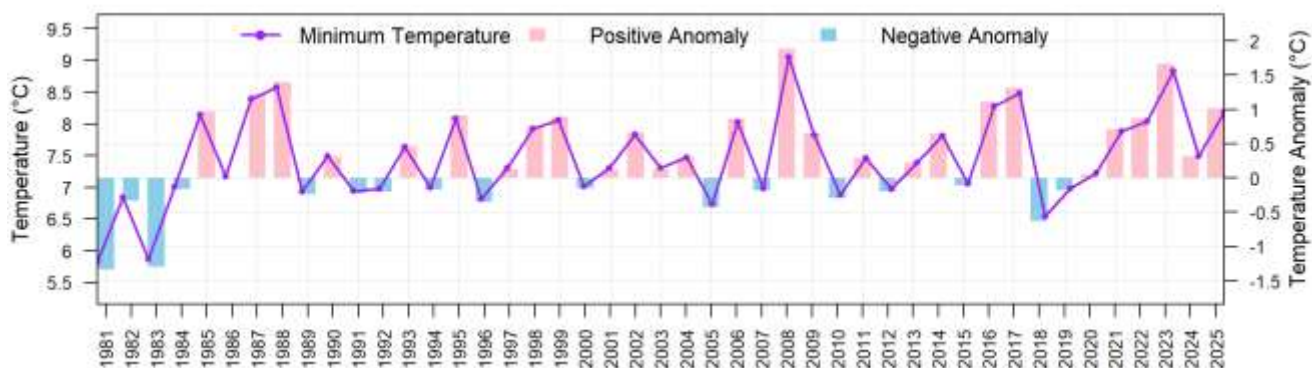


Figure 10: All Nepal monthly average minimum temperature of December from 1981 to 2025 of 59 stations (average of monthly average minimum temperature at stations having long term data).

### Diurnal Temperature Range

Most parts of the country experienced a diurnal temperature range (DTR) below 17°C. However, a few stations in Lumbini province, Karnali province, Bagmati province and Sudurpashchim province recorded DTRs above 17°C. The DTR is the difference between the maximum and minimum temperatures during a day. Dipal Gaun station recorded the highest DTR of 25.9°C whereas Chisapani Karnali station recorded the lowest DTR of 7.8°C. Out of 121 stations, about 80.2 % of the stations (97) recorded the DTR from 10°C to 17°C and about 9.1% stations (11) had the DTR below 10°C and remaining 13 stations DTR was above 17°C. The DTR values shown in the figure represent the average of daily DTRs.



**Government of Nepal**  
**Ministry of Energy, Water Resource and Irrigation**  
**Department of Hydrology and Meteorology**  
**Climate Division (Climate Analysis Section)**  
 Babarmahal, Kathmandu

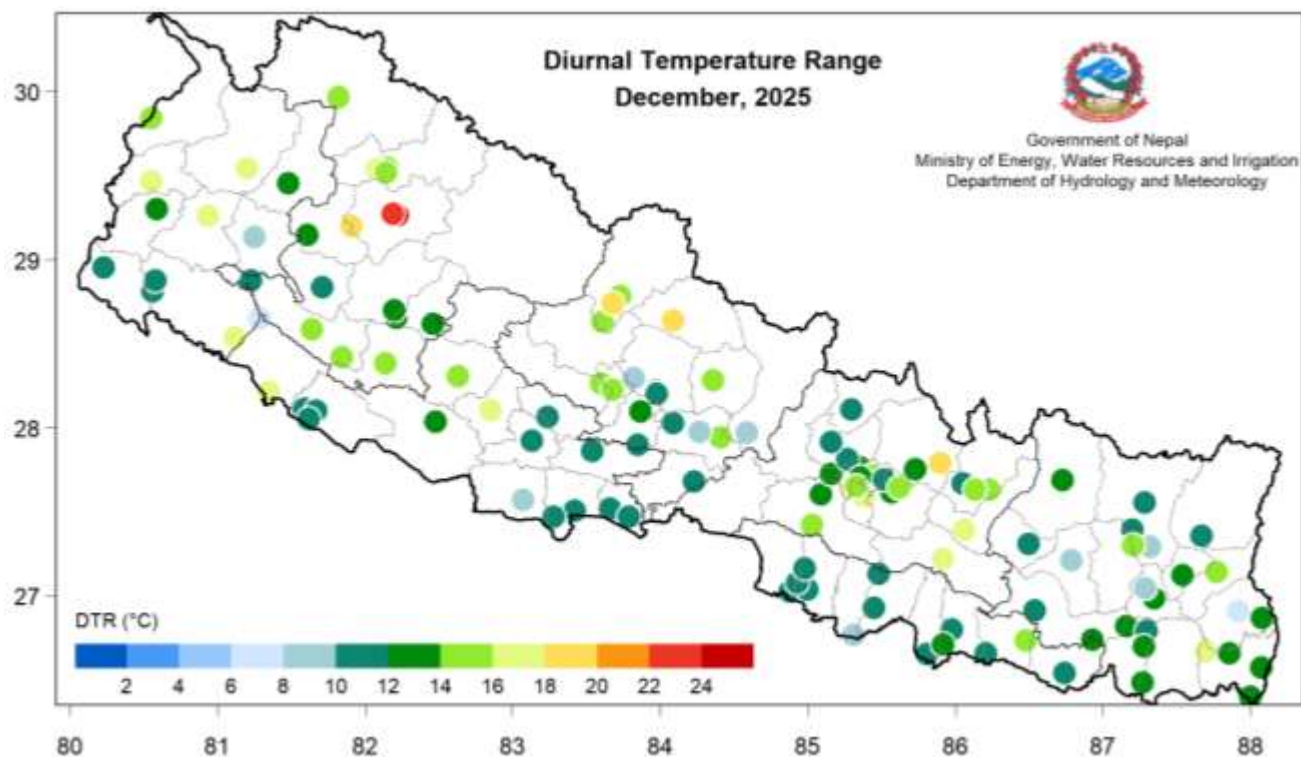


Figure 11: Station plot of diurnal temperature range for December 2025.

### Drought

Nepal faced extreme drought conditions (below normal precipitation by 70%) in December. Drought has been categorized based on the observed precipitation compared to normal. A drought is defined as moderate, severe and extreme as given in the table below.

Table 1: Drought category

S.N.	Percentage of normal precipitation (%)	Drought category
1	50 - 75	Moderate drought
2	30 - 50	Severe drought
3	< 30	Extreme drought

### Historical record break

Table 2: List of stations recording all-time record-breaking Maximum Temperature observed in December 2025.

S.N.	Station Name	District	Record break maximum temperature (°C)/Date	Previous highest maximum temperature (°C)/Date
1	Humde	Manang	29.2/2025-12-13	27.0/2016-06-04



**Government of Nepal**  
**Ministry of Energy, Water Resource and Irrigation**  
**Department of Hydrology and Meteorology**  
**Climate Division (Climate Analysis Section)**  
 Babarmahal, Kathmandu

Table 3: List of stations recording all-time record-breaking Minimum Temperature observed in December 2025.

S.N.	Station Name	District	Record break minimum temperature (°C)/Date	Previous lowest minimum temperature (°C)/Date
1	Bhairahawa Agric.	Rupandehi	-6.0/2025-12-05	1.0/2017-01-09
3	Khanchikot	Arghakhachi	-2.3/2025-12-04	-1.0/1989-02-19
4	Manthali	Ramechhap	0.7/2025-12-21	2.5/2013-01-09
5	Nagarkot	Bhaktapur	-8.2/2025-12-31	-7.5/2011-12-15
6	Nepalgunj Airport	Banke	-5.5/2025-12-25	0.3/2013-01-09
7	Pusma Camp	Surkhet	-2.5/2025-12-26	0.0/1974-12-20
8	Semari	Nawalparasi	-7.0/2025-12-28	-6.4/1999-01-14
9	Surkhet Airport Birendranagar	Surkhet	-3.5/2025-12-30	-0.7/2013-01-09
11	Tansen	Palpa	-3.5/2025-12-04	0.0/2018-01-09

Table 4: List of stations breaking the monthly lowest daily minimum temperature in December 2025.

S N	Station Name	District	Record break minimum temperature (°C)/Date	Previous lowest minimum temperature (°C)/Date
1	Bhairahawa Agric	Rupandehi	-1.5/2025-12-22	3.0/1994-12-16
2	Bhairahawa Airport	Rupandehi	3.0/2025-12-22	3.8/1974-12-22
3	Chandragadi Airport	Jhapa	9.0/2025-12-11	9.2/2022-12-28
4	Chatara	Sunsari	4.5/2025-12-05	5.0/2019-12-29
5	Chisapani Karnali	Kailali	6.0/2025-12-27	6.5/1974-12-22
6	Godavari West	Kailali	4.8/2025-12-11	5.0/2019-12-26
7	Kalaiya	Bara	6.5/2025-12-10	7.0/2022-12-29
8	Khanchikot	Arghakhachi	-0.4/2025-12-07	0.0/1983-12-27
9	Manthali	Ramechhap	2.3/2025-12-04	2.5/2018-12-31
10	Nagarkot	Bhaktapur	-8.0/2025-12-04	-7.5/2011-12-15
11	Nepalgunj Airport	Banke	-1.0/2025-12-22	2.3/2015-12-25
12	Pusma Camp	Surkhet	-0.5/2025-12-05	0.0/1974-12-20
13	Semari	Nawalparasi	-2.2/2025-12-22	0.0/1998-12-29
14	Surkhet Airport Birendranagar	Surkhet	-1.0/2025-12-01	-0.6/1973-12-25
15	Tansen	Palpa	0.5/2025-12-18	1.0/2019-12-27
16	Tumlingtar	Sankhuwasabha	7.5/2025-12-18	8.0/2023-12-14



**Government of Nepal**  
**Ministry of Energy, Water Resource and Irrigation**  
**Department of Hydrology and Meteorology**  
**Climate Division (Climate Analysis Section)**  
Babarmahal, Kathmandu

Table 5: List of stations breaking the monthly highest daily maximum temperature in December 2025.

S N	Station Name	District	Record break maximum temperature (°C)/Date	Previous highest maximum temperature (°C)/Date
1	Bandipur	Tanahun	27.0/2025-12-08	26.7/2018-12-09
2	Bijuwar Tar	Pyuthan	29.0/2025-12-17	28.0/2024-12-06
3	Chainpur East	Sankhuwasabha	27.5/2025-12-15	25.0/1988-12-03
4	Chapakot	Syangja	29.0/2025-12-03	28.6/1981-12-06
5	Dadeldhura	Dadeldhura	26.2/2025-12-14	25.0/2008-12-18
6	Daman	Makwanpur	24.3/2025-12-14	21.0/2006-12-05
7	Damauli	Tanahun	27.0/2025-12-13	26.0/2013-12-07
8	Dhunibesi	Dhading	33.0/2025-12-13	26.5/2021-12-05
9	Diktel	Khotang	30.2/2025-12-01	25.5/2010-12-08
10	Humde	Manang	29.2/2025-12-13	22.0/2016-12-21
11	Jiri	Dolakha	25.0/2025-12-23	23.9/2022-12-13
12	Jomsom	Mustang	27.0/2025-12-02	25.0/2016-12-21
13	Kabre	Dolakha	26.7/2025-12-14	23.0/2022-12-12
14	Kakani	Nuwakot	22.3/2025-12-03	22.0/1987-12-03
15	Kanyam Tea Estate	Illam	27.5/2025-12-03	25.0/2004-12-30
16	Kathmandu Airport	Kathmandu	27.9/2025-12-14	25.2/1988-12-03
17	Khudi Bazar	Lamjung	29.5/2025-12-14	27.5/2017-12-10
18	Libang Gaun	Rolpa	27.0/2025-12-03	26.5/2022-12-11
19	Lumle	Kaski	26.8/2025-12-13	22.0/2011-12-2
20	Mangalsen	Achham	25.4/2025-12-06	25.0/2015-12-1
21	Manma	Kalikot	26.8/2025-12-03	26.3/2019-12-17
22	Okhaldhunga	Okhaldhunga	29.1/2025-12-10	23.3/2017-12-10
23	Pakhribas	Dhankuta	28.3/2025-12-18	22.1/2024-12-4
24	Pokhara Airport	Kaski	28.1/2025-12-15	25.5/2017-12-9
25	Rara	Mugu	22.0/2025-12-09	20.0/1988-12-3
26	Talcha	Mugu	20.6/2025-12-20	17.8/2023-12-21
27	Taplejung	Taplejung	26.5/2025-12-03	22.0/2017-12-10



**Government of Nepal**  
**Ministry of Energy, Water Resource and Irrigation**  
**Department of Hydrology and Meteorology**  
**Climate Division (Climate Analysis Section)**  
**Babarmahal, Kathmandu**

**Annex 1: Monthly precipitation and temperature data for December 2025.**

S.N.	Station	Latitude	Longitude	Elevation	Precipitation								Temperature									
					Total (mm)	Normal	% of Normal	No. of Rainy Days				24hr Highest (mm)/Date	Maximum			Minimum			No. of days with T <sub>x</sub> ≥30°C	DTR (°C)		
								≥1.0mm	≥10.0mm	≥25.0mm	≥50.0mm		Average (°C)	Normal	Dep. form normal (°C)	Highest temp. / Date	Average (°C)	Normal			Dep. form normal (°C)	Lowest temp. / Date
<b>Koshi Province</b>																						
1	Biratnagar Airport	26.48	87.27	72	0.0	4.3	0.0	6	0	0	0	NR	24.6	25.4	-0.8	-	11.5	10.9	0.6	10/11	-	13.1
2	Chainpur (Bajhang)	27.29	87.32	1277	0.0	5.5	0.0	7	0	0	0	NR	20.3	19.5	0.8	23.4/1	10.4	7.8	2.6	9/23	0	9.9
3	Chandragadi Airport	26.57	88.08	95	0.0	0.5*	0.0	8	0	0	0	NR	24.8	26.4*	-1.6	28.9/18	12.1	12.3*	-0.2	10.2/11	0	12.7
4	Chatara	26.82	87.16	105	1.5	6.5	23.1	7	0	0	0	0.8/30	25.6	26.7*	-1.1	28.9/10	12.4	11.7*	0.7	10.2/25	0	13.2
5	Damak	26.67	87.70	119	0.0	3.9	0.0	5	0	0	0	NR	26.7	26.3*	0.4	30.2/1	10.2	9.9*	0.3	7.5/25	1	16.4
6	Dhankuta	26.98	87.35	1192	0.0	6.4	0.0	8	0	0	0	NR	22.9	20.4	2.5	24.4/10	9.2	8.4	0.8	7.8/30	0	13.7
7	Dharan Bazar	26.79	87.30	310	0.0	4	0.0	9	0	0	0	NR	23.8	25.1*	-1.3	27/10	12.8	13.4*	-0.6	10/25	0	11
8	Diktel	27.21	86.79	1612	0.0	8.2	0.0	8	0	0	0	NR	18.2	17.5*	0.7	20.5/14	8.6	8.2*	0.4	7/25	0	9.6
9	Gaida (Kankai)	26.66	87.86	107	0.0	5.7	0.0	8	0	0	0	NR	24.5	26.3	-1.8	27.5/15	12.1	10.2	1.9	10/22	0	12.3
10	Ilam Tea Estate	26.91	87.92	1208	0.0	6.9	0.0	5	0	0	0	NR	19.5	18.7*	0.8	20.8/10	11.6	10.6*	1.0	8.8/31	0	7.9
11	Kanyam Tea Estate	26.87	88.08	1570	0.0	8.4	0.0	7	0	0	0	NR	21.7	16	5.7	24/18	8.5	5.6	2.9	6/24	0	13.2
12	Kechana	26.40	88.00	71	0.0	1.6*	0.0	7	0	0	0	NR	24.4	25.7*	-1.3	28.3/18	11.1	11.3*	-0.2	9/13	0	13.3
13	Khadbari	27.39	87.20	1064	0.0	7.6*	0.0	12	0	0	0	NR	21.7	19.2*	2.5	23/1	10.7	10.4*	0.3	7.5/31	0	11
14	Lukla Airport	27.69	86.73	2786	0.1	0.5*	20.0	12	0	0	0	0.1/1	12.7	11.1*	1.6	16.3/18	0.0	-0.5*	0.5	-4.1/25	0	12.7
15	Num	27.56	87.29	1494	0.0	18.8*	0.0	9	0	0	0	NR	18.6	17.8*	0.8	20.6/14	7.4	7*	0.4	6/13	0	11.1
16	Okhaldhunga	27.31	86.50	1731	0.0	8.2	0.0	9	0	0	0	NR	17.9	17.4	0.5	20.5/14	6.9	6.8	0.1	4.6/30	0	11.1
17	Pakhribas	27.05	87.29	1720	0.0	6.3	0.0	7	0	0	0	NR	16.6	16.1	0.5	17.6/10	7.3	6.3	1.0	5.7/30	0	9.3
18	Phidim	27.14	87.77	1157	0.0	7.7	0.0	6	0	0	0	NR	23.4	21.8	1.6	25.6/18	8.4	8.2	0.2	7/15	0	15
19	Taplejung	27.36	87.67	1744	0.0	7.9	0.0	7	0	0	0	NR	17.5	16.2	1.3	19.3/18	6.8	5.6	1.2	5.2/16	0	10.7
20	Tarahara	26.70	87.28	120	1.8	4.6	39.1	7	0	0	0	1/31	25.1	25.2	-0.1	29/18	11.5	10.3	1.2	9.5/8	0	13.6
21	Terhathum	27.12	87.54	1525	0.0	6.5	0.0	8	0	0	0	NR	21.6	19.6	2.0	23.5/13	8.1	6.6	1.5	7/24	0	13.5
22	Tumlingtar	27.30	87.20	477	0.0	4.4	0.0	8	0	0	0	NR	25.3	24.8*	0.5	27/1	11.0	11.8*	-0.8	9.5/12	0	14.3
23	Udayapur Gadhi	26.91	86.54	469	0.0	9.6	0.0	9	0	0	0	NR	22.3	24*	-1.7	25.6/9	10.8	11.8*	-1.0	7.4/25	0	11.6
<b>Madhesh Province</b>																						
1	Birganj	27.02	84.88	67	0.0	5.4	0	5	0	0	0	NR	22.9	25.5*	-2.6	29.5/14	12.0	12*	0.0	9/25	0	10.9
2	Gaur	26.77	85.31	77	0.0	3.2	0	7	0	0	0	NR	21.0	23.2	-2.2	27/8	11.8	10.6	1.2	9/20	0	9.2
3	Hardinath	26.80	85.98	93	0.0	2.6*	0.0	6	0	0	0	NR	22.2	24*	-1.8	27.5/13	12.0	11.5*	0.5	8.6/27	0	10.3
4	Jalesor	26.65	85.81	68	0.0	3.5	0	6	0	0	0	NR	21.7	24.4	-2.7	27/13	11.6	11.6	0.0	9/30	0	10.1
5	Janakpur Airport	26.71	85.92	76	0.0	2.8	0	7	0	0	0	NR	23.6	24.9	-1.3	-	11.4	11	0.4	9.6/11	-	12.2
6	Kalaiya	27.04	85.00	100	0.0	6.5	0	7	0	0	0	NR	22.6	25.3*	-2.7	28.1/15	11.6	12*	-0.4	8/25	0	11
7	Karmaiya	27.13	85.48	139	0.0	6.3	0	6	0	0	0	NR	23.2	24.6	-1.4	28/13	13.1	13	0.1	10/25	0	10.1
8	Lahan	26.73	86.48	110	0.0	5.1*	0	6	0	0	0	NR	26.2	24.6*	1.6	33/13	11.9	11.5*	0.4	10.2/26	15	14.3
9	Manusmara	26.93	85.45	90	0.0	4.5	0	7	0	0	0	NR	21.5	24.2	-2.7	26.8/13	11.3	10.1	1.2	8.8/25	0	10.3
10	Parwanipur	27.08	84.93	87	0.0	7.3	0	5	0	0	0	NR	22.0	24.4	-2.4	28/13	11.4	10.3	1.1	8.5/25	0	10.7
11	Phattepur	26.74	86.93	83	0.0	5.3	0	8	0	0	0	NR	25.0	27.2	-2.2	28.5/18	11.6	10.6*	1.0	10/11	0	13.5
12	Rajbiraj	26.54	86.74	68	0.0	4.9	0	8	0	0	0	NR	23.3	25	-1.7	27.9/14	12.6	11.2	1.4	11.4/11	0	10.8
13	Simara Airport	27.16	84.98	137	0.0	7.7	0	7	0	0	0	NR	22.3	24.4	-2.1	-	11.3	9.5	1.8	8.4/26	-	10.9
14	Siraha	26.66	86.21	63	0.0	3.9	0	4	0	0	0	NR	23.4	24.9*	-1.5	29.2/13	12.2	9.4*	2.8	9.5/25	0	11.1
<b>Bagmati Province</b>																						
1	Bahrabise	27.79	85.90	884	0.0	7.9	0	12	0	0	0	NR	22.8	22.3*	0.5	23.8/2	3.6	6.9*	-3.3	3/8	0	19.3
2	Bhaktapur	27.68	85.42	1315	0.0	10.3	0	7	0	0	0	NR	22.8	21*	1.8	24.2/11	5.6	3*	2.6	4/29	0	17.2
3	Bharatpur	27.68	84.43	216	0.0	4.8*	0.0	6	0	0	0	NR	-	24.2*	-	-	11.6	10.8*	0.8	9.5/16	-	0
4	Buddhanilakantha	27.76	85.35	1378	0.0	7.8*	0.0	5	0	0	0	NR	20.3	19*	1.3	22/9	7.7	5*	2.7	6.6/13	0	12.6
5	Changu Narayan	27.72	85.43	1502	0.0	7	0	8	0	0	0	NR	22.2	19.8*	2.4	23.4/1	6.6	6.4*	0.2	6/16	0	15.6
6	Charikot	27.67	86.05	1940	0.0	6.4	0	11	0	0	0	NR	15.2	16.7*	-1.5	17.8/9	3.5	4*	-0.5	2.2/31	0	11.7
7	Chautara	27.75	85.73	1552	0.0	6.9	0	7	0	0	0	NR	20.1	19.1*	1.0	23.7/1	6.8	6.6*	0.2	5.3/27	0	13.3
8	Daman	27.60	85.09	2265	0.0	13.9*	0.0	8	0	0	0	NR	15.8	14.4*	1.4	20.2/2	3.4	2.3*	1.1	1.3/26	0	12.4



**Government of Nepal**  
**Ministry of Energy, Water Resource and Irrigation**  
**Department of Hydrology and Meteorology**  
**Climate Division (Climate Analysis Section)**  
**Babarmahal, Kathmandu**

S.N.	Station	Latitude	Longitude	Elevation	Precipitation								Temperature									
					Total (mm)	Normal	% of Normal	No. of Rainy Days				Maximum				Minimum						
								≥1.0mm	≥10.0mm	≥25.0mm	≥50.0mm	24hr Highest (mm)/Date	Average (°C)	Normal	Dep. form normal (°C)	Highest temp. / Date	Average (°C)	Normal	Dep. form normal (°C)	Lowest temp. / Date	No. of days with Tx>30°C	DTR (°C)
9	Dhulikhel	27.62	85.57	1543	0.0	8.3	0	9	0	0	0	NR	19.4	15.6	3.8	21/2	5.9	4.9	1.0	4.5/26	0	13.5
10	Dhunchhe	28.11	85.30	1993	0.0	19.5*	0	8	0	0	0	NR	14.8	14.7	0.1	17.5/2	3.6	4	-0.4	1.5/25	0	11.2
11	Dhunibesi	27.72	85.16	991	0.0	9.2	0	7	0	0	0	NR	21.6	19.6	2.0	23.5/23	8.9	9.1	-0.2	6/31	0	12.7
12	Godavari	27.59	85.38	1527	0.0	10.2	0	7	0	0	0	NR	19.5	17.3	2.2	21.5/16	3.4	4	-0.6	2.5/5	0	16.1
13	Hetauda N.F.I.	27.42	85.03	452	0.0	7.7	0	9	0	0	0	NR	23.7	23.8	-0.1	26.2/14	9.5	8.7	0.8	7.9/11	0	14.1
14	Jiri	27.63	86.23	1877	0.0	7.2	0	10	0	0	0	NR	16.9	15.5	1.4	19.1/9	0.9	-0.5	1.4	-0.5/9	0	16
15	Kabre	27.63	86.13	1755	0.0	5.5*	0.0	9	0	0	0	NR	19.8	17.9*	1.9	21.5/18	4.5	5*	-0.5	3.4/4	0	15.3
16	Kakani	27.81	85.27	2030	0.0	9.1	0	8	0	0	0	NR	15.8	15.1	0.7	18.5/13	4.8	5.5	-0.7	3/26	0	11
17	Kathmandu Airport	27.70	85.36	1337	0.0	7.8	0	7	0	0	0	NR	18.2	20.1	-1.9	19.5/1	6.0	4.2	1.8	4.8/30	0	12.3
18	Khokana	27.64	85.30	1309	0.0	8.5	0	8	0	0	0	NR	20.8	19.9*	0.9	23.1/3	2.7	1.9*	0.8	0.9/26	0	18.1
19	Khumaltar	27.65	85.33	1334	0.0	7	0	8	0	0	0	NR	21.4	19.4	2.0	23/1	5.5	3.3	2.2	4/31	0	16
20	Manthali	27.39	86.06	497	0.0	4.9	0	7	0	0	0	NR	25.5	25.2*	0.3	26.8/3	8.9	9.3*	-0.4	7/15	0	16.6
21	Nagarkot	27.69	85.52	2147	0.0	5.9	0	6	0	0	0	NR	15.3	14.3	1.0	24.5/16	5.1	4.2	0.9	3.5/26	0	10.3
22	Nuwakot	27.91	85.16	966	0.0	9	0	6	0	0	0	NR	20.5	21.8	-1.3	22.5/3	9.8	9.6	0.2	8.6/26	0	10.7
23	Panchkhal	27.65	85.62	857	0.0	6.4	0	8	0	0	0	NR	23.5	22.4	1.1	25.4/6	7.8	5.8	2.0	6.3/26	0	15.7
24	Rampur	27.65	84.35	189	0.0	9.8	0	6	0	0	0	NR	23.2	24	-0.8	27.5/19	-	9.1	-	-	0	0.0
25	Sindhuli Madhi	27.22	85.92	556	0.0	8.8*	0	12	0	0	0	NR	24.2	24.3	-0.1	26.2/9	7.4	8.7	-1.3	5.5/11	0	16.7
<b>Gandaki Province</b>																						
1	Baglung	28.26	83.60	964	0.0	8.3	0	0	0	0	0	NR	23.7	22.3*	1.4	25.2/3	7.9	7.4	0.5	5.8/16	0	15.8
2	Bandipur	27.94	84.41	991	0.0	15.2	0	8	0	0	0	NR	21.1	19.8*	1.3	24/2	7.0	7.6*	-0.6	5.5/31	0	14.1
3	Chapkot	27.90	83.85	617	0.0	13.7	0	7	0	0	0	NR	21.1	21.9	-0.8	22.5/4	9.2	9.3	-0.1	7.2/26	0	11.9
4	Damauli	27.97	84.27	347	0.0	11.9	0	7	0	0	0	NR	20.8	20.8*	0.0	23/1	12.6	10.7*	1.9	11/17	0	8.3
5	Dumkauli	27.68	84.23	183	0.0	13.2	0	6	0	0	0	NR	22.0	24.2	-2.2	26.5/5	11.6	10.7	0.9	9.5/11	0	10.4
6	Gorkha	27.97	84.59	724	0.0	7	0	8	0	0	0	NR	18.3	20.2	-1.9	21.6/1	9.6	9.1	0.5	8.5/12	0	8.7
7	Humde	28.64	84.09	3401	0.0	3.8*	0.0	-	0	0	0	NR	12.5	9.1*	3.4	17.2/17	-5.6	-7.5*	1.9	-8.2/31	0	18.1
8	Jomsom	28.78	83.73	2741	0.0	5.4	0	8	0	0	0	NR	16.3	12.3	4.0	19.8/17	0.7	-1.2	1.9	-2.5/26	0	15.6
9	Khairini Tar	28.03	84.09	515	0.0	12.3	0	6	0	0	0	NR	21.6	21.9	-0.3	23.8/15	10.9	10.3	0.6	8.8/26	0	10.7
10	Khudi Bazar	28.28	84.36	838	0.0	14.6	0	10	0	0	0	NR	22.5	21.9	0.6	24.3/14	7.0	7.8*	-0.8	6/26	0	15.5
11	Kushma	28.22	83.68	900	0.0	12.2	0	8	0	0	0	NR	22.1	23	-0.9	23/1	7.0	7.5	-0.5	5.4/26	0	15.1
12	Lete	28.63	83.61	2490	0.0	15.1	0	8	0	0	0	NR	16.1	12.6*	3.5	19.8/18	2.0	0.1*	1.9	-0.5/3	0	14.1
13	Lumle	28.30	83.82	1738	0.0	15.4	0	9	0	0	0	NR	16.2	15.3	0.9	20.1/11	6.3	6.1	0.2	4.8/4	0	9.9
14	Malepatan	28.22	83.97	859	0.0	10.7	0	9	0	0	0	NR	21.1	20.8	0.3	22.3/3	7.4	7.5	-0.1	4.7/26	0	13.7
15	Pokhara Airport	28.20	83.98	827	0.0	11.5	0	8	0	0	0	NR	20.6	21.1	-0.5	22/1	9.2	8.3	0.9	7.8/26	0	11.4
16	Syangja	28.10	83.87	871	0.0	10.6	0	8	0	0	0	NR	20.9	21.3	-0.4	22.5/2	7.9	7.5	0.4	5.3/26	0	13
17	Thakmarpha	28.74	83.68	2655	0.0	10.6	0	8	0	0	0	NR	17.6	13.2	4.4	21.1/17	-1.1	-1.6	0.5	-3.5/30	0	18.7
<b>Lumbini Province</b>																						
1	Bhairahawa (Agric)	27.53	83.46	112	-	10.2	-	4	-	-	-	-	-	24	-	-	-	10.3	-	-	-	0.0
2	Bhairahawa Airport	27.51	83.42	108	1.3	8.2	16.22	5	0	0	0	1.3/30	22.4	23.7	-1.3	27.5/3	11.5	10.2	1.3	8.9/25	0	10.9
3	Bijuwara Tar	28.10	82.85	835	0.0	7.8	0	6	0	0	0	NR	24.7	23.3*	1.4	26.2/2	8.4	7.6*	0.8	6/30	0	16.4
4	Ghorai	28.04	82.48	663	0.0	6.7	0	7	0	0	0	NR	22.4	22.4	0.0	-	8.8	6.9	1.9	6.6/26	-	13.5
5	Gulariya	28.21	81.35	126	0.0	8.8	0	7	0	0	0	NR	21.1	22.7*	-1.6	26.6/3	5.1	8.9*	-3.8	3/6	0	16.1
6	Khajura	28.11	81.59	129	0.0	12.3	0	8	0	0	0	NR	21.2	23.3	-2.1	26.8/3	10.0	8.8	1.2	7.5/16	0	11.2
7	Khanchikot	27.92	83.13	1801	0.0	16	0	5	0	0	0	NR	18.2	15.9	2.3	20.7/4	7.4	6.9	0.5	4.7/25	0	10.8
8	Libang Gaun	28.31	82.63	1314	0.0	11.4	0	7	0	0	0	NR	21.5	20.3*	1.2	23/2	5.6	4.4*	1.2	4/10	0	15.9
9	Lumbini	27.47	83.28	95	0.0	6.2	0	5	0	0	0	NR	22.3	22.7*	-0.4	-	10.2	9.8*	0.4	-	-	12.0
10	Nepalgunj (Reg.Off.)	28.05	81.62	141	0.0	8.1	0	9	0	0	0	NR	21.0	23.2	-2.2	26.5/3	10.9	9.4	1.5	7.6/25	0	10.1
11	Nepalgunj Airport	28.10	81.67	165	0.0	9.1	0	9	0	0	0	NR	21.0	22.8	-1.8	27/1	10.2	10.7	-0.5	8/25	0	10.7
12	Parasi	27.52	83.66	112	0.5	11.7	4.27	4	0	0	0	0.5/29	22.1	24.2*	-2.1	29/17	10.9	10.1*	0.8	8.6/25	0	11.2
13	Semari	27.47	83.79	110	0.0	16.8	0	6	0	0	0	NR	21.9	21.6	0.3	-	10.5	5.1	1.4	-	-	11.7
14	Tamghas	28.06	83.24	1547	0	11.2	0	6	0	0	0	NR	16.7	16.3	0.35	18.5/2	6.49	9.6	0.89	4.5/31	0	10.2
15	Tansen	27.86	83.54	1183	0	15.4*	0	6	0	0	0	NR	20.6	20.4*	0.2	22.5/18	9.55	7.7	1.848	5.5/31	0	11.0
16	Taulihawa	27.57	83.07	106	0	5.4	0	6	0	0	0	NR	20.9	23.8	-2.86	27.1/14	11.2	10.7*	0.545	7.5/25	0	9.7



**Government of Nepal**  
**Ministry of Energy, Water Resource and Irrigation**  
**Department of Hydrology and Meteorology**  
**Climate Division (Climate Analysis Section)**  
**Babarmahal, Kathmandu**

S.N.	Station	Latitude	Longitude	Elevation	Precipitation								Temperature									
					Total (mm)	Normal	% of Normal	No. of Rainy Days				24hr Highest (mm)/Date	Maximum				Minimum					
								≥1.0mm	≥10.0mm	≥25.0mm	≥50.0mm		Average (°C)	Normal	Dep. form normal (°C)	Highest temp. / Date	Average (°C)	Normal	Dep. form normal (°C)	Lowest temp. / Date	No. of days with Tx>30°C	DTR (°C)
<b>Karnali Province</b>																						
1	Chaurjhari Tar	28.65	82.21	863	0	5.9	0	6	0	0	0	NR	20.6	20.5	0.12	22/1	6.92	6.6	0.316	5/31	0	13.7
2	Dailekh	28.84	81.71	1394	0	9.7	0	7	0	0	0	NR	19.5	18.3	1.21	21.2/24	9.45	6.8	2.645	6.6/17	0	10.1
3	Dipal Gaun	29.26	82.22	2422	0	7.7	0	7	0	0	0	NR	21.2	17.3	3.87	25.5/20	-4.8	-4.3	-0.46	-6.5/25	0	25.9
4	Dunai	28.95	82.90	2098	0	4.3	0	9	0	0	0	NR	-	14.4*	-	-	-	0.8*	-	-	-	0.0
5	Gamadi Shree Nagar	29.55	82.15	2113	0	23.1	0	8	0	0	0	NR	19.4	16.5*	2.89	22.5/1	3.51	3.3*	0.206	2.5/12	0	15.9
6	Jajarkot	28.70	82.20	1240	0	11.2	0	7	0	0	0	NR	19.2	21.4*	-2.23	20.5/1	5.98	6.9*	-0.92	3.5/25	0	13.2
7	Jumla	29.27	82.18	2363	0	9.2	0	8	0	0	0	NR	20	16.6	3.43	23.6/20	-3.8	-4.6	0.803	-5.5/25	0	23.8
8	Jumla Airport	29.27	82.19	2384	0	10.6*	0	7	0	0	0	NR	19.2	16.3*	2.88	22.2/20	-4.9	-5.4*	0.539	-7/28	0	24.0
9	Manma	29.15	81.61	1729	0	16.9*	0	5	0	0	0	NR	19.6	17.3*	2.3	22.6/8	7.07	5.1*	1.974	5.4/3	0	12.5
10	Mehalkuna	28.42	81.84	464	0	9.2*	0	7	0	0	0	NR	23.3	23.3*	0	25.6/15	9.1	7.9*	1.203	6.6/30	0	14.2
11	Musikot (Rukumkot)	28.62	82.46	1412	0	10.2	0	9	0	0	0	NR	20.3	19.7	0.63	23.4/23	7.28	5.9	1.377	5.5/25	0	13.0
12	Nagma	29.20	81.91	2017	0	13	0	9	0	0	0	NR	20.1	17*	3.08	23/1	0.7	0.5*	0.197	-1.5/2	0	19.4
13	Pusma Camp	28.88	81.23	953	0	15.2	0	5	0	0	0	NR	17.8	18.8	-1.03	20.5/1	7.68	8.5	-0.82	4.6/30	0	10.1
14	Rara	29.54	82.08	2989	0	14*	0	5	0	0	0	NR	15.6	11.6*	4.05	17.8/23	-2.2	-2.9*	0.732	-3.5/4	0	17.8
15	Salyan Bazar	28.38	82.14	1557	0	10.4	0	9	0	0	0	NR	22.9	20.6	2.35	24.9/18	8.08	7.7	0.384	6/26	0	14.9
16	Simikot	29.97	81.82	2993	0	15*	0	8	0	0	0	NR	15.4	11.6*	3.77	19.5/20	-0.2	-3.6*	3.435	-2.5/9	0	15.5
17	Surkhet Airport	28.59	81.64	720	0	13.1	0	7	0	0	0	NR	22	22	-0.36	24/1	6.8	6.1	0.7	4.9/28	0	14.8
18	Talcha	29.52	82.15	2750	0	13.5*	0	9	0	0	0	NR	17	13*	3.97	20.6/20	2.4	0*	2.4	0.2/3	0	14.6
<b>Sudurpaschim Province</b>																						
1	Baitadi (Gothalapani)	29.56	80.41	1352	0.0	20.4	0.0	5	0	0	0	NR	-	19*	-	-	5.6	5.1*	0.48	3/21	-	0.0
2	Bajura (Martadi)	29.46	81.48	1598	0.0	14.3	0.0	7	0	0	0	NR	20	18.1*	1.72	21.5/2	6.6	4.2*	2.37	4.5/26	0	13.2
3	Chainpur (East)	29.55	81.20	1405	0.0	13.5*	0.0	3	0	0	0	NR	22	20.6*	0.93	23.2/7	4.2	4.9*	-0.67	3/4	0	17.3
4	Chisapani (Karnali)	28.65	81.29	201	0.0	12.4	0.0	5	0	0	0	NR	20	21.1	-1.14	23.5/2	12	11.8	0.35	10.7/21	0	7.8
5	Dadeldhura	29.30	80.59	1879	0.0	13.4	0.0	4	0	0	0	NR	19	16.7	2.07	22.1/1	6.5	5.1	1.44	4.1/26	0	12.2
6	Darchula	29.84	80.55	945	0.0	12.2*	0.0	3	0	0	0	NR	22	21.2*	0.61	24/1	6	6.1*	-0.05	4.5/28	0	15.8
7	Dhangadhi (Attariya)	28.81	80.56	184	0.0	12	0.0	5	0	0	0	NR	21	23.3	-2.13	26.7/14	10	8.5	1.84	7.2/21	0	10.8
8	Dipayal	29.26	80.94	563	0.0	11.2	0.0	2	0	0	0	NR	24	23.8	0.2	25.5/1	6.5	5.9	0.61	4.6/10	0	17.5
9	Godavari (West)	28.88	80.58	280	0.0	11.8	0.0	3	0	0	0	NR	21	23.1	-1.76	27/2	10	11.5	-1.2	5.9/28	0	11.0
10	Mahendra Nagar	28.95	80.23	197	0.0	16.3	0.0	3	0	0	0	NR	21	22.9	-1.66	27/2	9.6	8.3	1.3	6.2/21	0	11.6
11	Mangalsen	29.14	81.25	1310	0.0	15.7	0.0	5	0	0	0	NR	15	19*	-4.04	-	6.4	5.7*	0.73	4.5/25	-	8.5
12	Patan new	29.47	80.55	1292	0.0	14.7*	0.0	4	0	0	0	NR	22	18.7*	3.11	25/23	5.2	4.4*	0.8	3.4/27	0	16.6
13	Tikapur	28.54	81.12	149	0.0	12.5	0.0	6	0	0	0	NR	21	22.8	-1.89	26.3/14	3.5	7.9	-4.44	0.7/21	0	17.5

Note:

- “mm” = millimeter; “temp” = temperature; “-” = Data Not Available; “NR” = No Precipitation
- This summary is prepared based on the precipitation and temperature received at 127 meteorological stations during December 2025 Out of 127 stations, 103 stations have normal precipitation data, 60 stations have normal maximum and 59 stations have normal minimum temperature data. Normal precipitation/temperature is the average of the monthly precipitation/temperature for the period of 1991-2020
- Less than 90% of normal precipitation is considered below normal, 90 to 110% is considered as near normal, and more than 110% of normal precipitation is considered as above normal precipitation for the month

Please report any errors or inaccuracies in this document to [climateupdates.dhm@gmail.com](mailto:climateupdates.dhm@gmail.com) or contact us by phone at 015319007. Thank you for reading this document.