

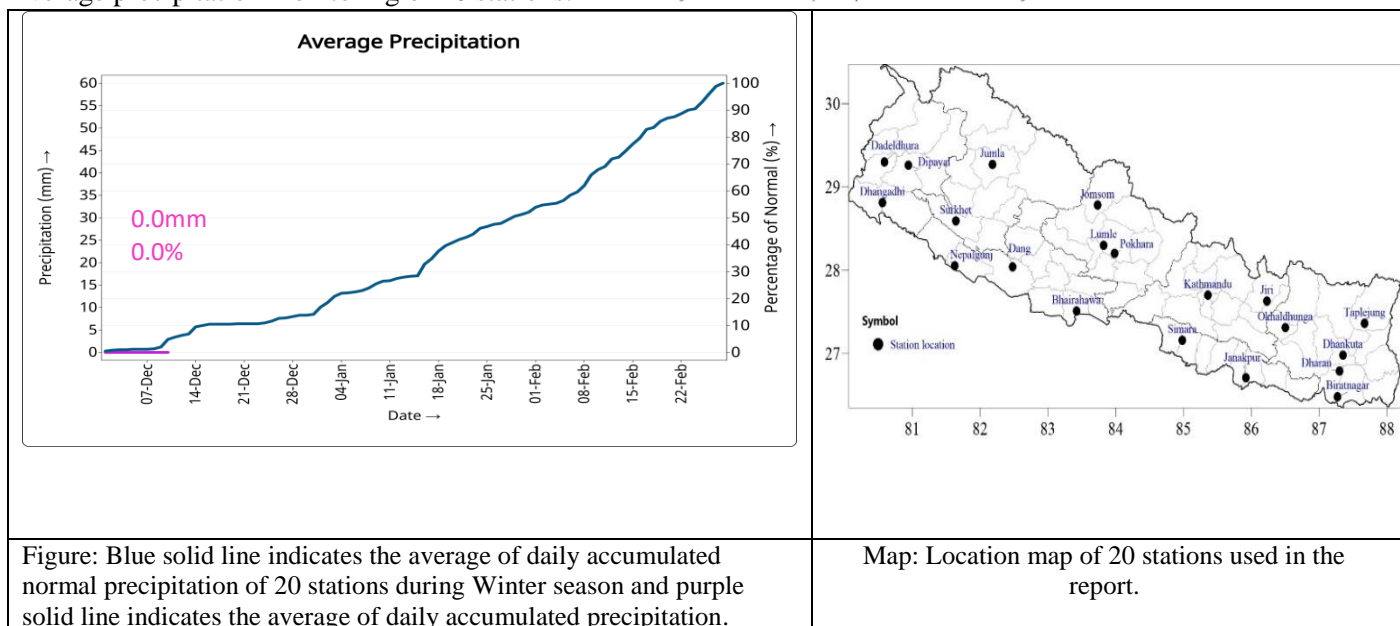


Government of Nepal  
Ministry of Energy, Water Resource and Irrigation  
Department of Hydrology and Meteorology  
Climate Division (Climate Analysis Section)  
Babarmahal, Kathmandu

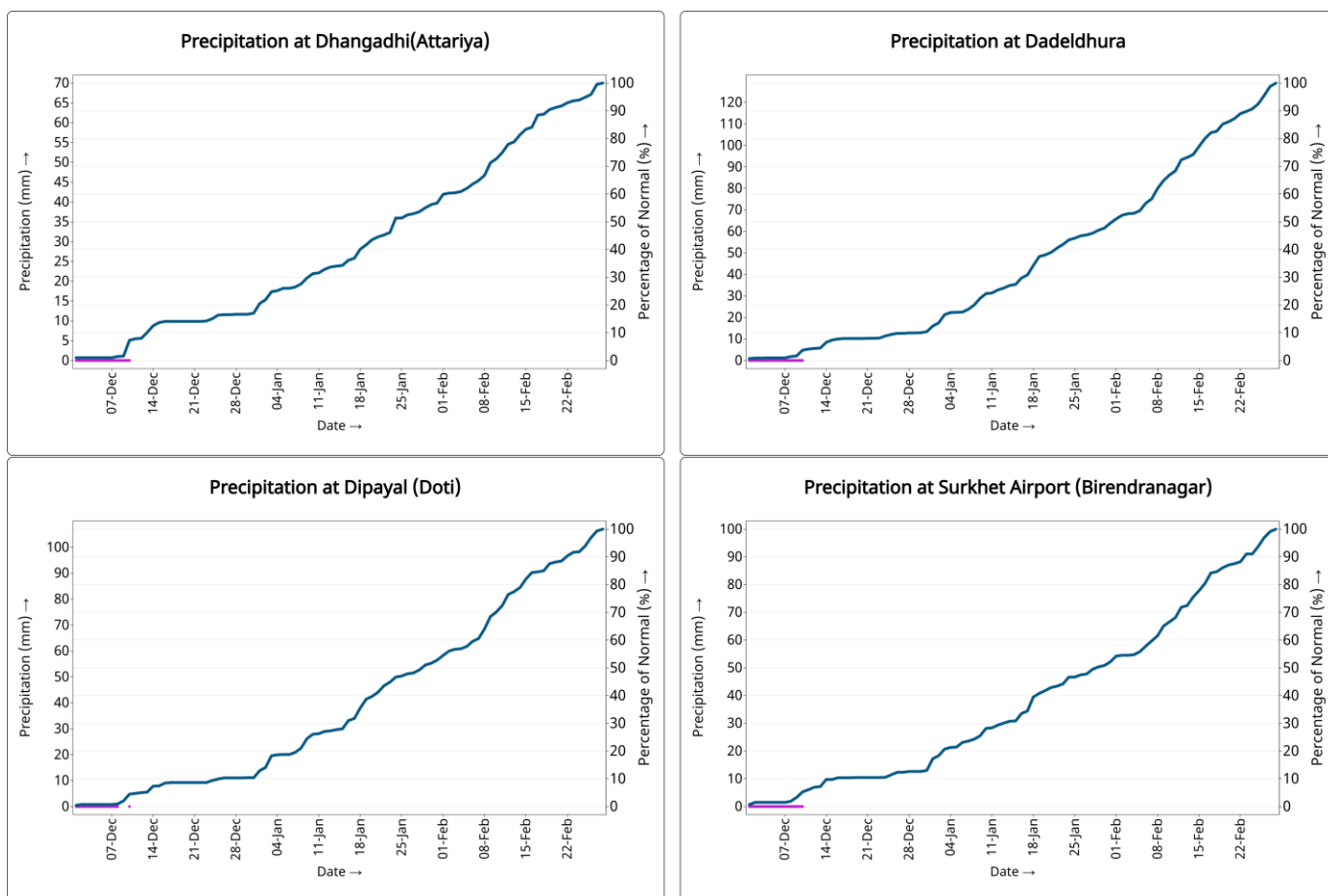
10<sup>th</sup> December 2025

## Winter (December 2024 –February, 2025) Precipitation Monitoring

Average precipitation monitoring of 20 stations: — Daily accumulated precipitation — Daily accumulated normal \*mm → millimeter



Precipitation Monitoring of individual stations:





Government of Nepal  
Ministry of Energy, Water Resource and Irrigation  
Department of Hydrology and Meteorology  
Climate Division (Climate Analysis Section)  
Babarmahal, Kathmandu

— Daily accumulated precipitation — Daily accumulated normal \*mm → millimeter

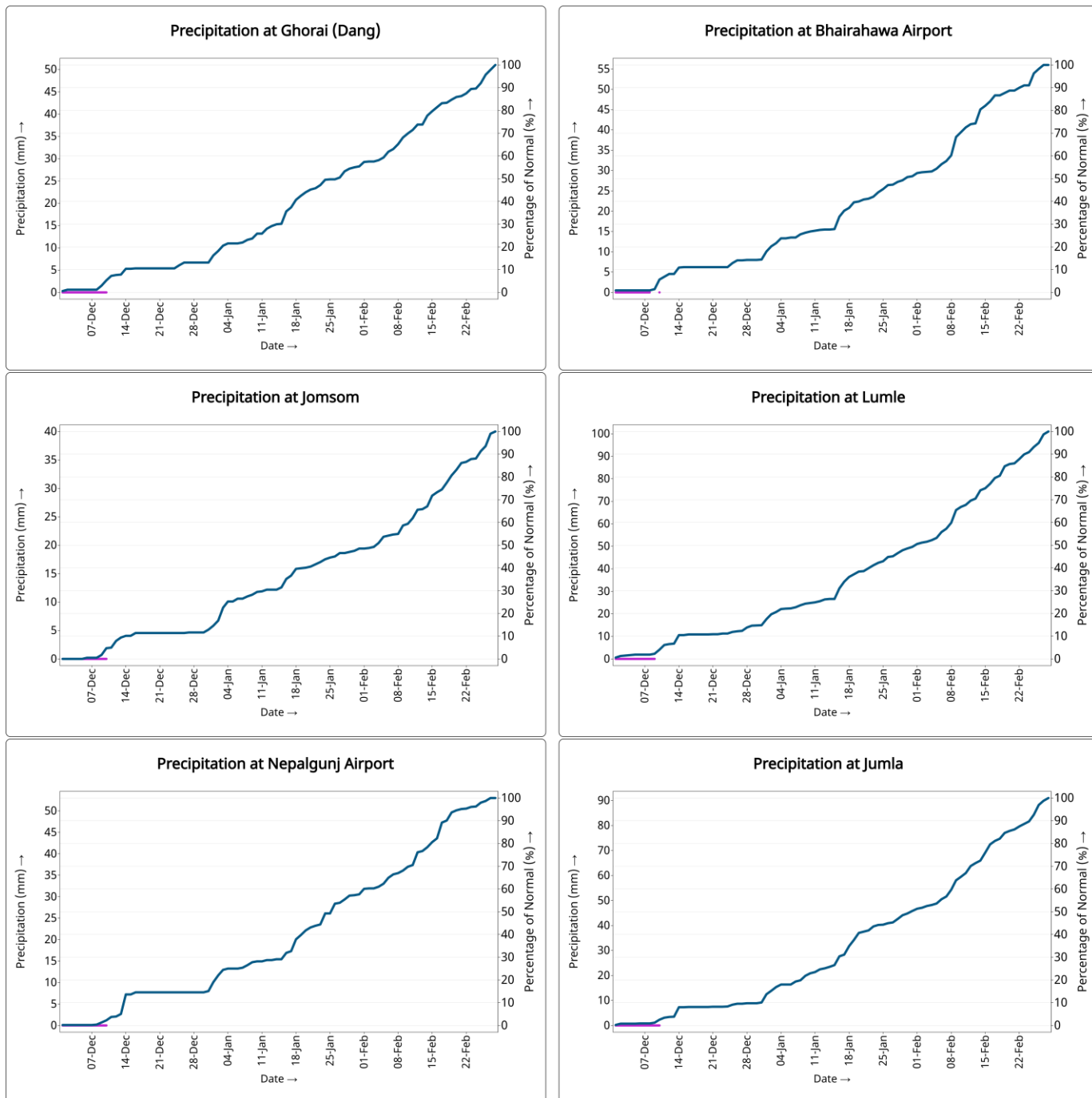


Figure: The blue lines in the above graphs indicate daily accumulated normal precipitation during Winter season. Normal rainfall is the average of precipitation over 30 years period from 1991 -2020 and purple lines in above graphs indicate the daily accumulated precipitation of this Winter season



Government of Nepal  
Ministry of Energy, Water Resource and Irrigation  
Department of Hydrology and Meteorology  
Climate Division (Climate Analysis Section)  
Babarmahal, Kathmandu

— Daily accumulated precipitation — Daily accumulated normal \*mm → millimeter

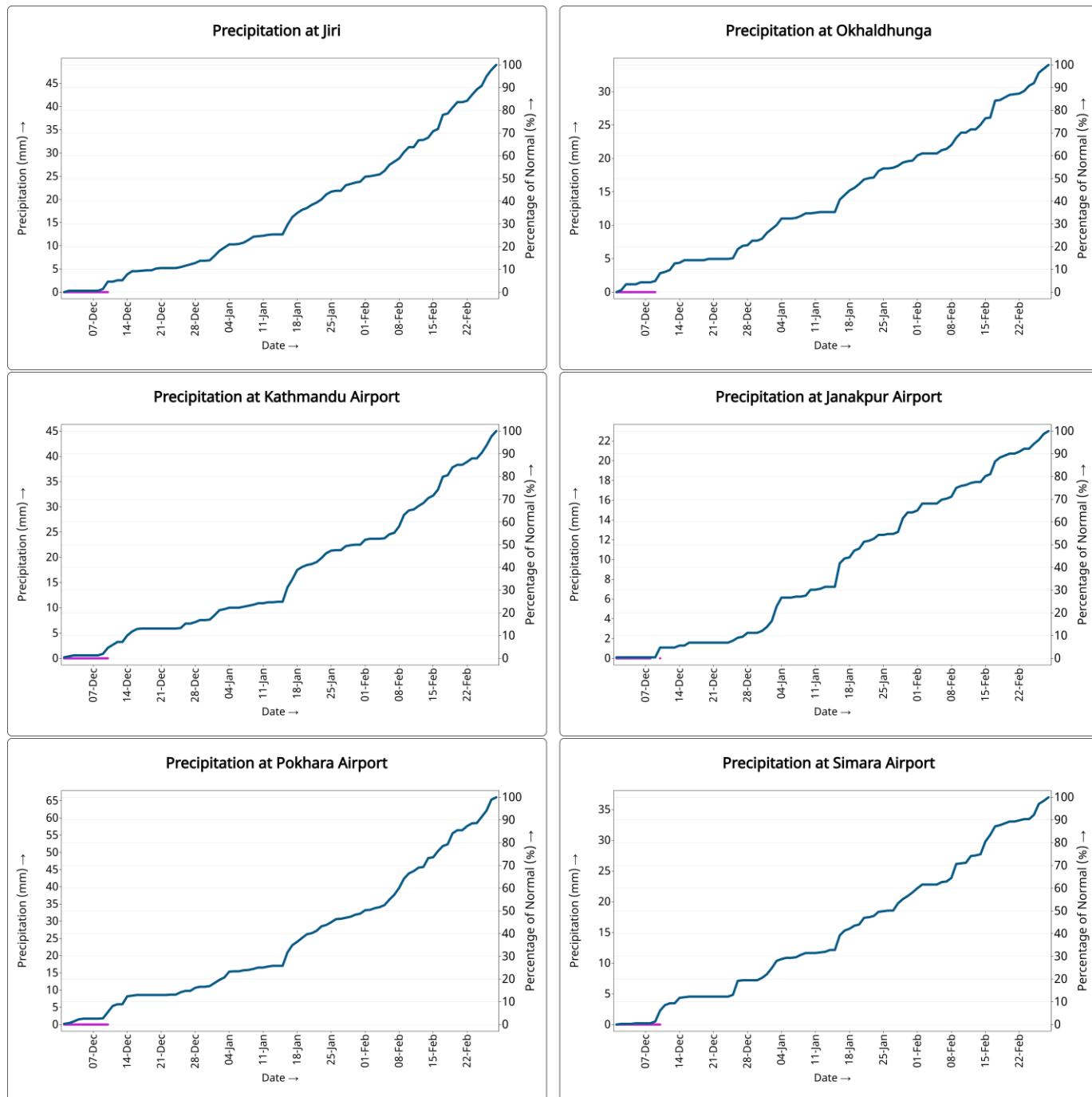


Figure: The blue lines in the above graphs indicate daily accumulated normal precipitation during Winter season. Normal rainfall is the average of precipitation over 30 years period from 1991 -2020 and purple lines in above graphs indicate the daily accumulated precipitation of this Winter season



Government of Nepal  
Ministry of Energy, Water Resource and Irrigation  
Department of Hydrology and Meteorology  
Climate Division (Climate Analysis Section)  
Babarmahal, Kathmandu

— Daily accumulated precipitation — Daily accumulated normal \*mm → millimeter

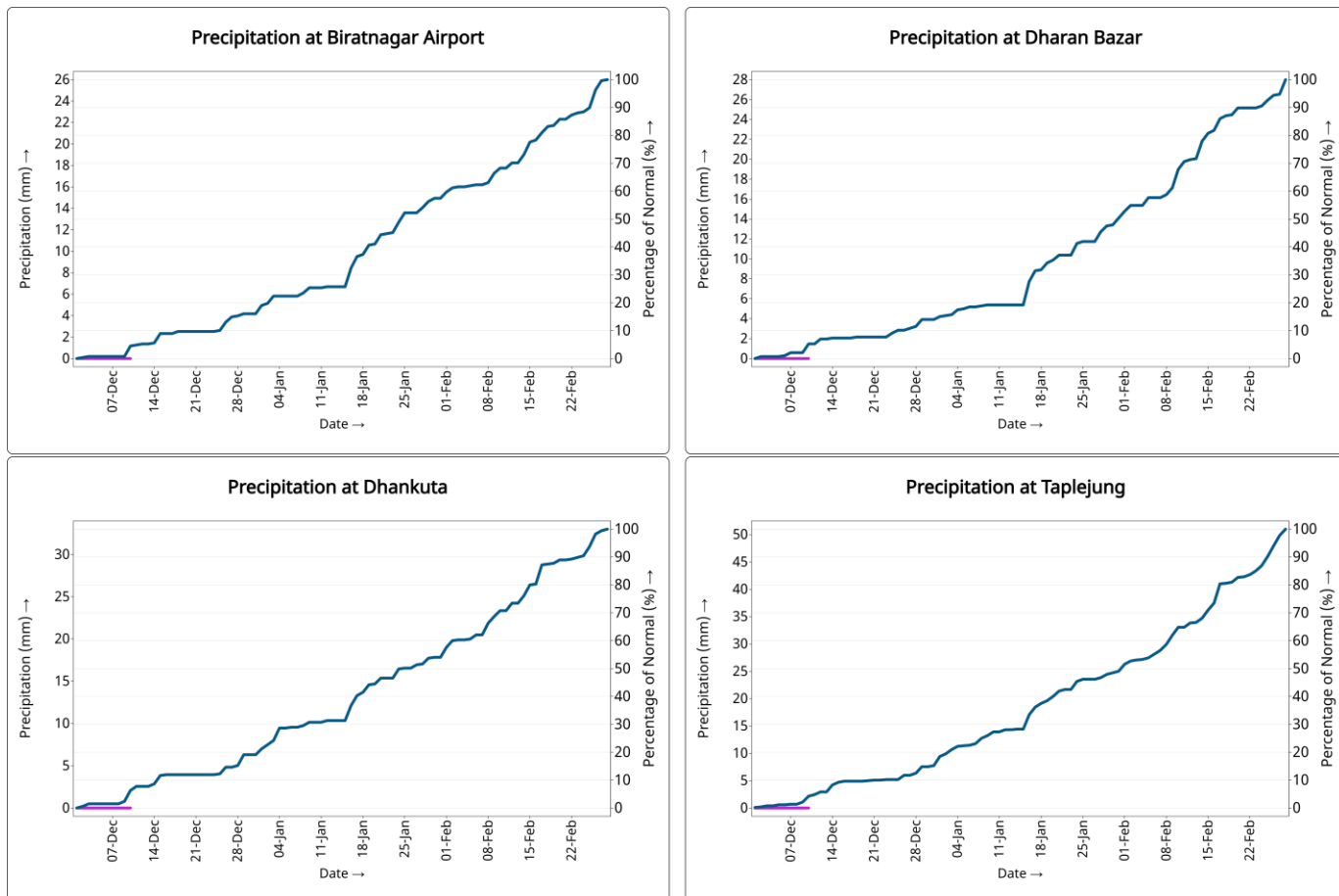


Figure: The blue lines in the above graphs indicate daily accumulated normal precipitation during Winter season. Normal rainfall is the average of precipitation over 30 years period from 1991 -2020 and purple lines in above graphs indicate the daily accumulated precipitation of this Winter season