



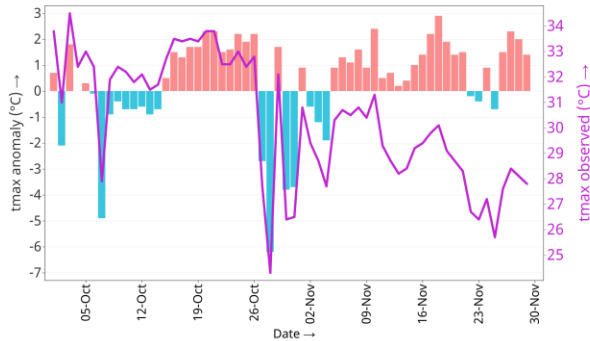
Government of Nepal  
Ministry of Energy, Water Resource and Irrigation  
Department of Hydrology and Meteorology  
Climate Division (Climate Analysis Section)  
Babarmahal, Kathmandu

30<sup>th</sup> November 2025

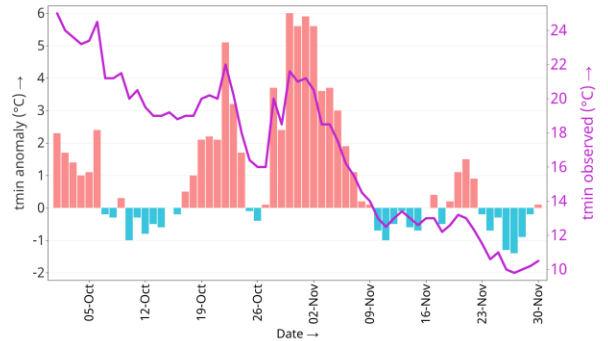
Post Monsoon (October – November, 2025) Temperature Monitoring

— Observed Temperature    Positive Deviation from Normal    Negative Deviation from Normal    \*°C → Degree Celsius

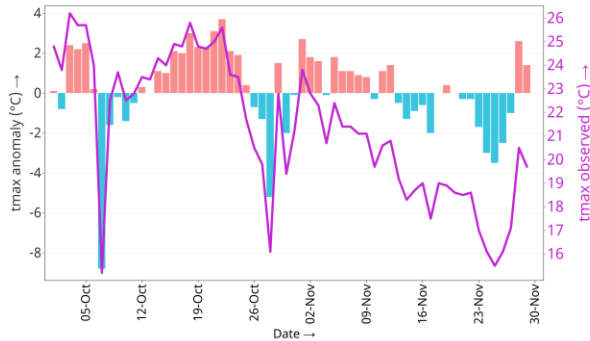
Maximum Temperature at Dhangadhi(Attariya)



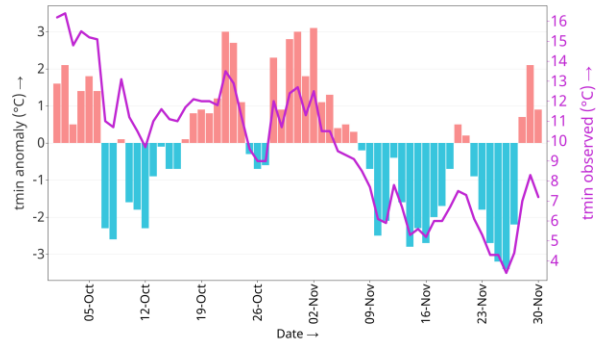
Minimum Temperature at Dhangadhi(Attariya)



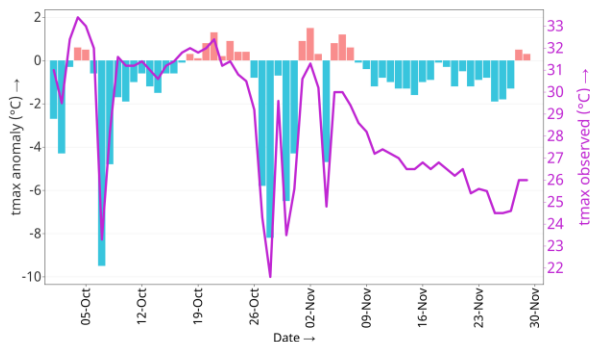
Maximum Temperature at Dadeldhura



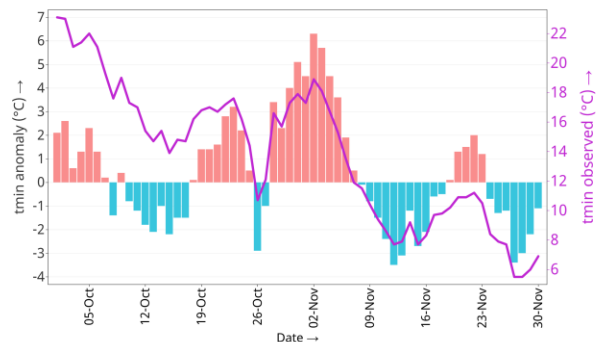
Minimum Temperature at Dadeldhura



Maximum Temperature at Dipayal (Doti)



Minimum Temperature at Dipayal (Doti)

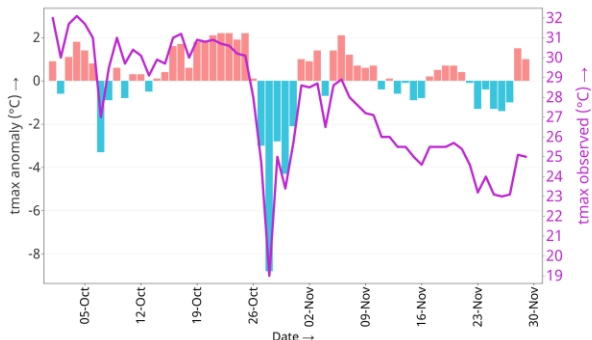




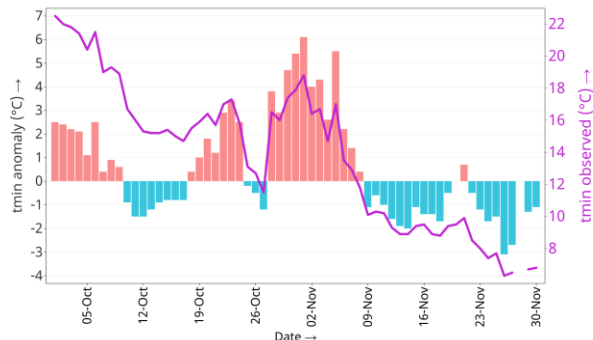
Government of Nepal  
Ministry of Energy, Water Resource and Irrigation  
Department of Hydrology and Meteorology  
Climate Division (Climate Analysis Section)  
Babarmahal, Kathmandu

— Observed Temperature    Positive Deviation from Normal    Negative Deviation from Normal    \*°C → Degree Celsius

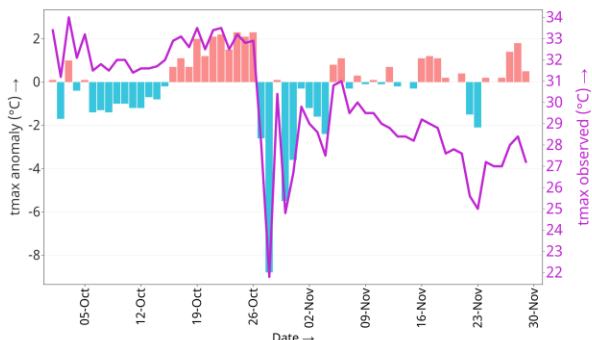
Maximum Temperature at Surkhet Airport  
(Birendranagar)



Minimum Temperature at Surkhet Airport  
(Birendranagar)



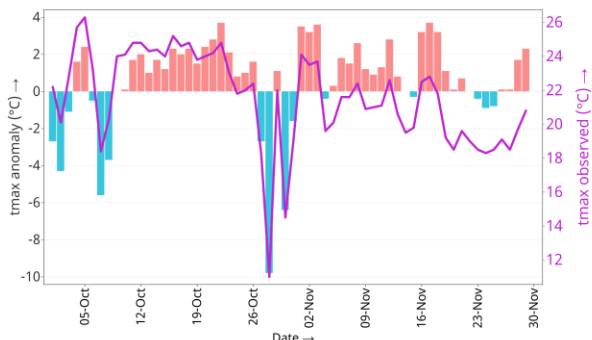
Maximum Temperature at Nepalgunj Airport



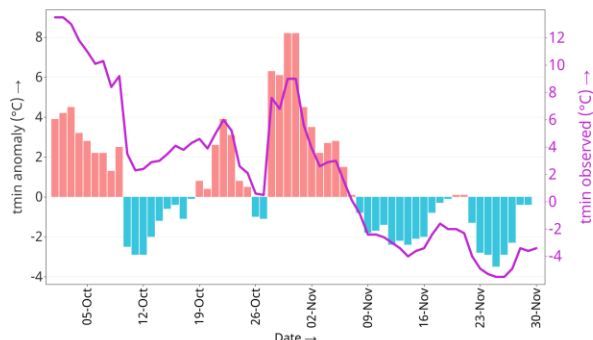
Minimum Temperature at Nepalgunj Airport



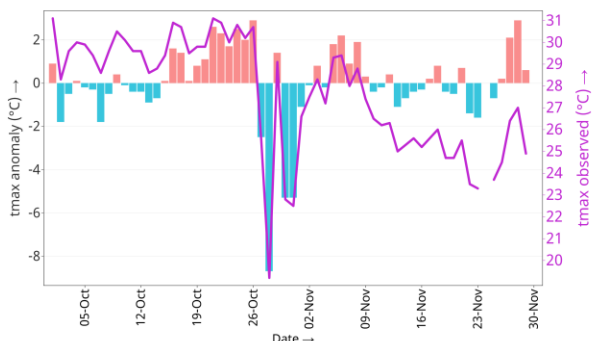
Maximum Temperature at Jumla



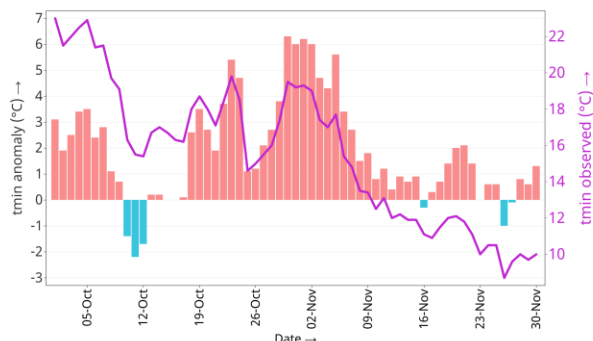
Minimum Temperature at Jumla



Maximum Temperature at Ghorai (Dang)



Minimum Temperature at Ghorai (Dang)

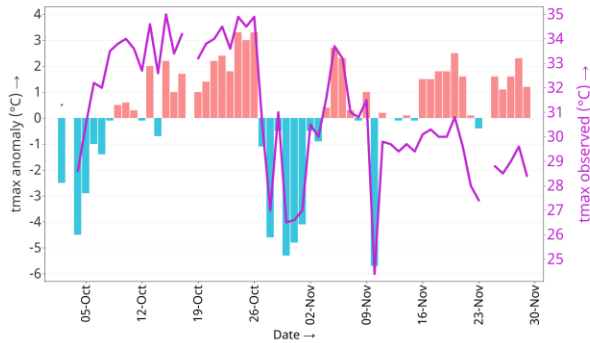




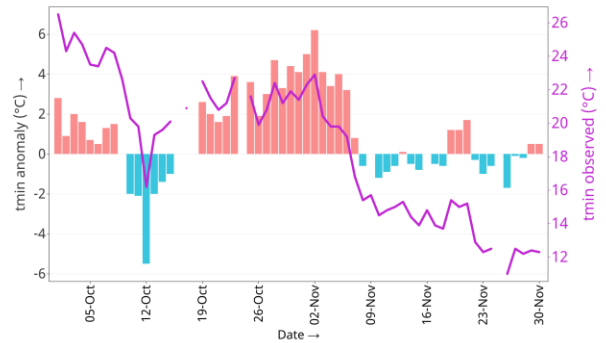
Government of Nepal  
Ministry of Energy, Water Resource and Irrigation  
Department of Hydrology and Meteorology  
Climate Division (Climate Analysis Section)  
Babarmahal, Kathmandu

— Observed Temperature    Positive Deviation from Normal    Negative Deviation from Normal    \*°C → Degree Celsius

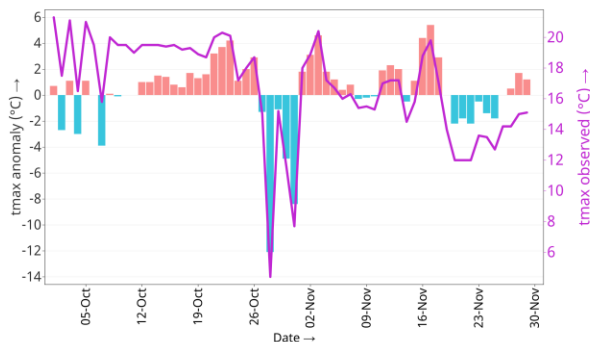
Maximum Temperature at Bhairahawa Airport



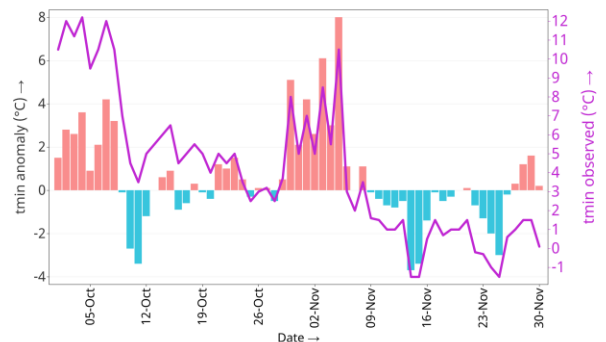
Minimum Temperature at Bhairahawa Airport



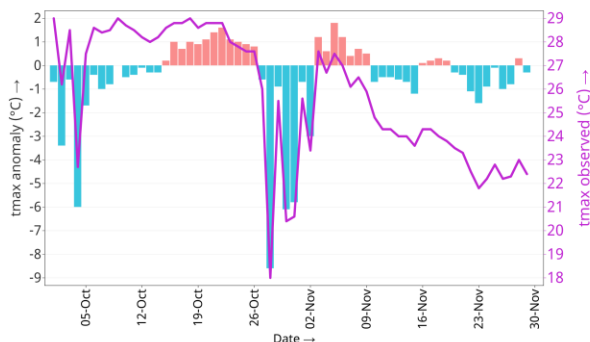
Maximum Temperature at Jomsom



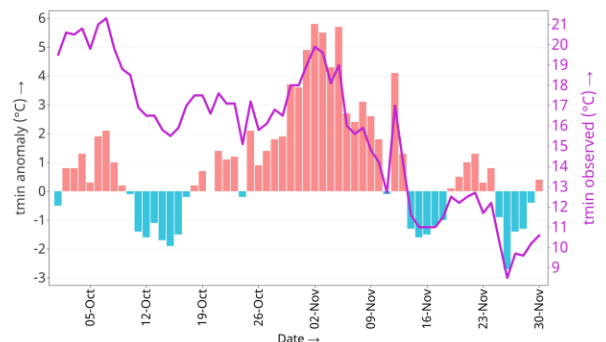
Minimum Temperature at Jomsom



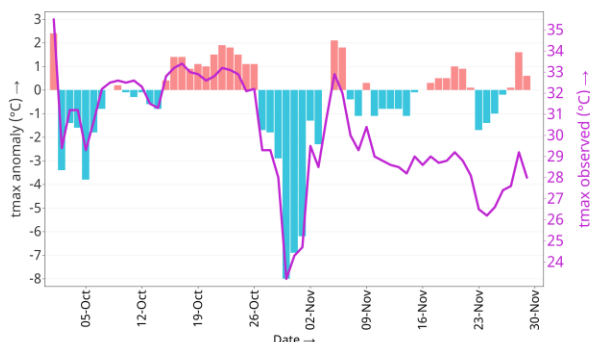
Maximum Temperature at Pokhara Airport



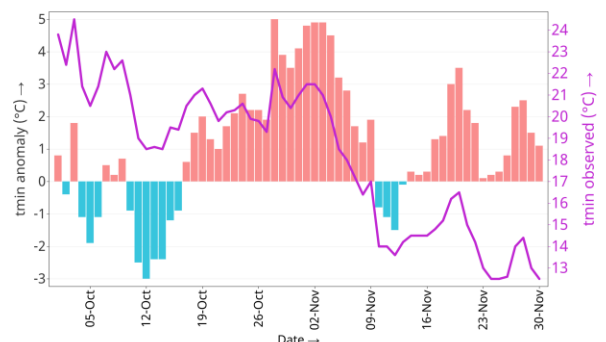
Minimum Temperature at Pokhara Airport



Maximum Temperature at Simara Airport



Minimum Temperature at Simara Airport

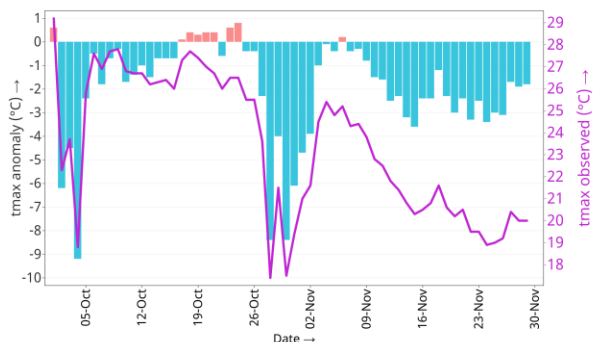




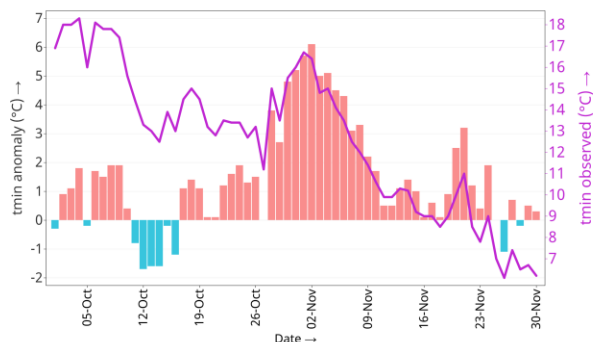
Government of Nepal  
Ministry of Energy, Water Resource and Irrigation  
Department of Hydrology and Meteorology  
Climate Division (Climate Analysis Section)  
Babarmahal, Kathmandu

— Observed Temperature    Positive Deviation from Normal    Negative Deviation from Normal    \*°C → Degree Celsius

Maximum Temperature at Kathmandu Airport



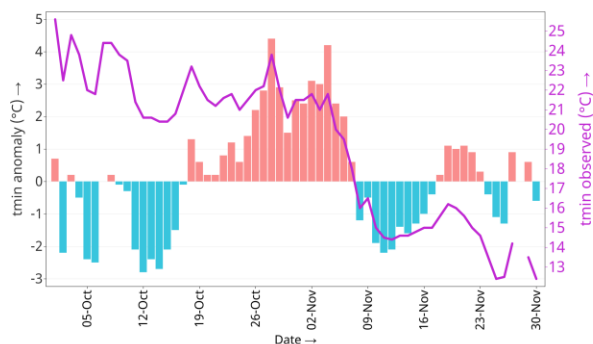
Minimum Temperature at Kathmandu Airport



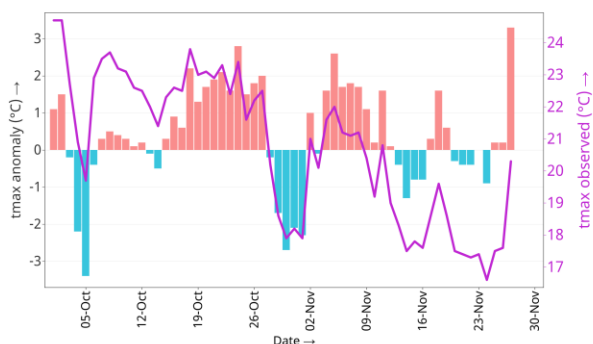
Maximum Temperature at Janakpur Airport



Minimum Temperature at Janakpur Airport



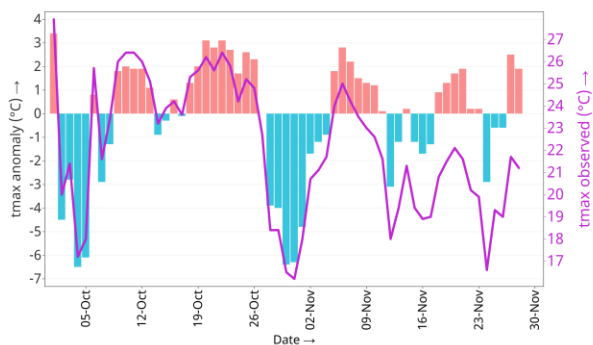
Maximum Temperature at Jiri



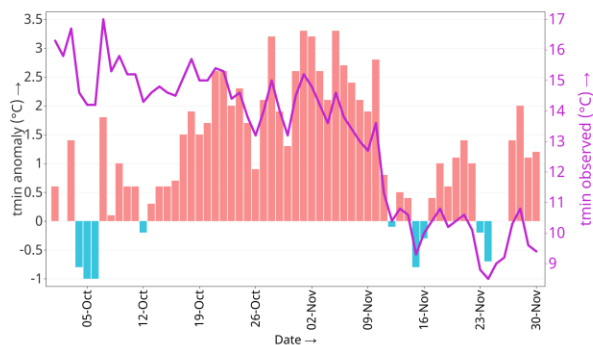
Minimum Temperature at Jiri



Maximum Temperature at Okhaldhunga



Minimum Temperature at Okhaldhunga

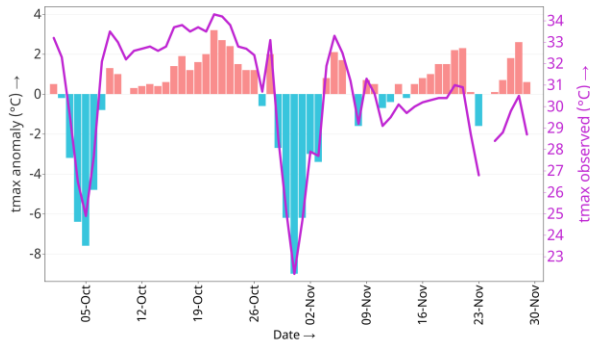




Government of Nepal  
Ministry of Energy, Water Resource and Irrigation  
Department of Hydrology and Meteorology  
Climate Division (Climate Analysis Section)  
Babarmahal, Kathmandu

— Observed Temperature    Positive Deviation from Normal    Negative Deviation from Normal    \*°C → Degree Celsius

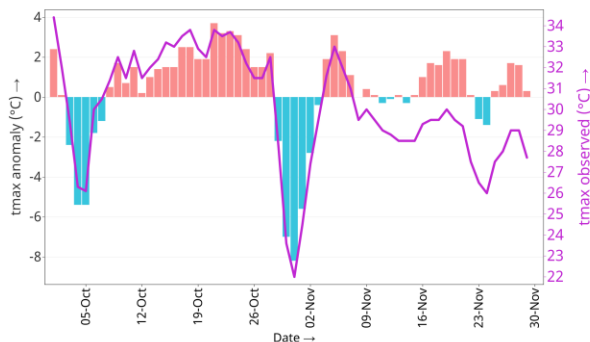
Maximum Temperature at Biratnagar Airport



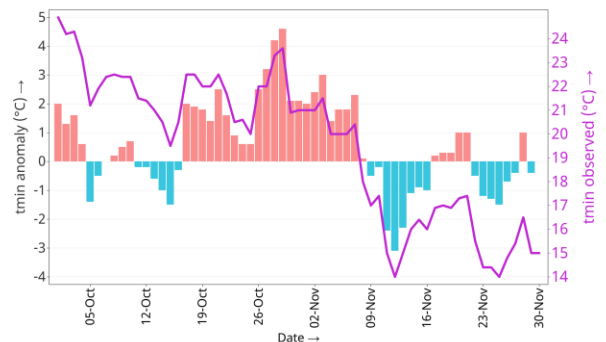
Minimum Temperature at Biratnagar Airport



Maximum Temperature at Dharan Bazar



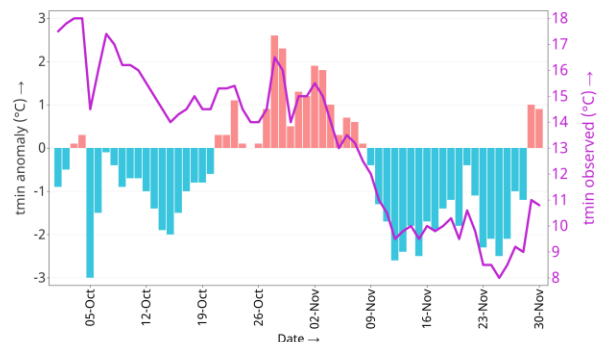
Minimum Temperature at Dharan Bazar



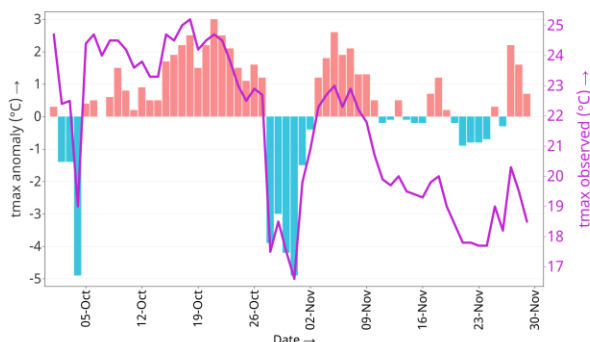
Maximum Temperature at Dhankuta



Minimum Temperature at Dhankuta



Maximum Temperature at Taplejung



Minimum Temperature at Taplejung

