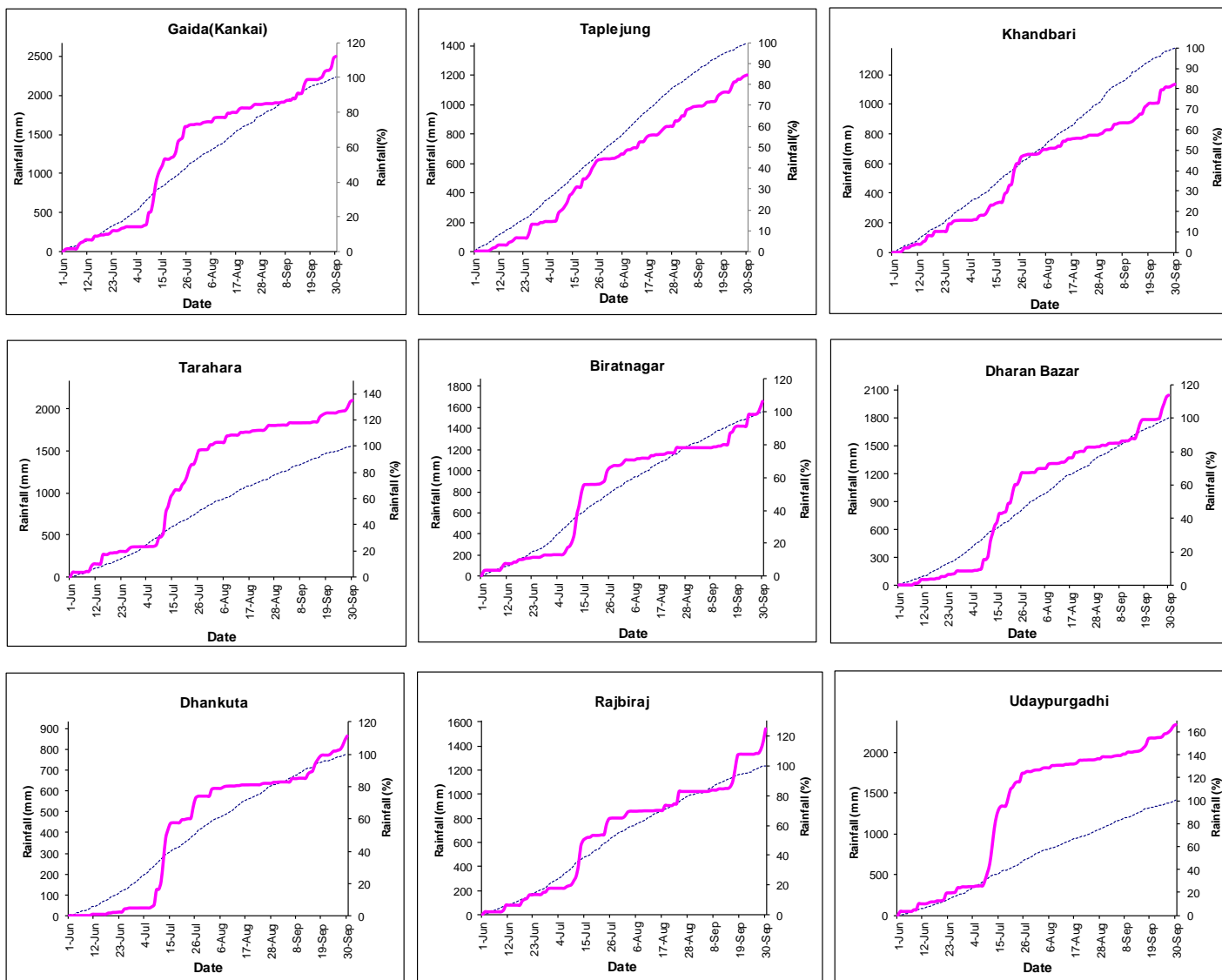


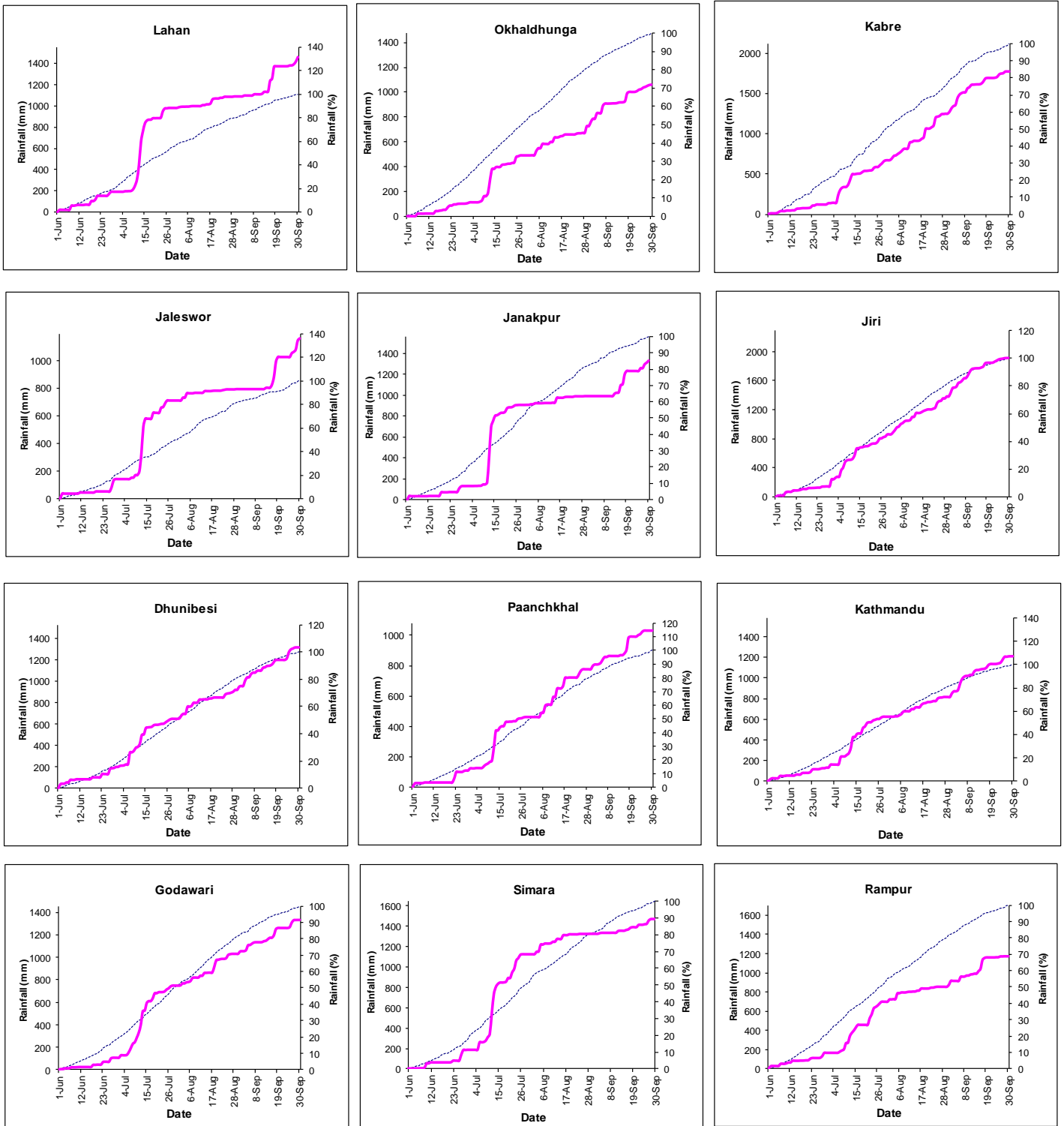


Government of Nepal
Ministry of Energy, Water Resources and Irrigation
Department of Hydrology and Meteorology
Climate Division
Babarmahal, Kathmandu, Nepal

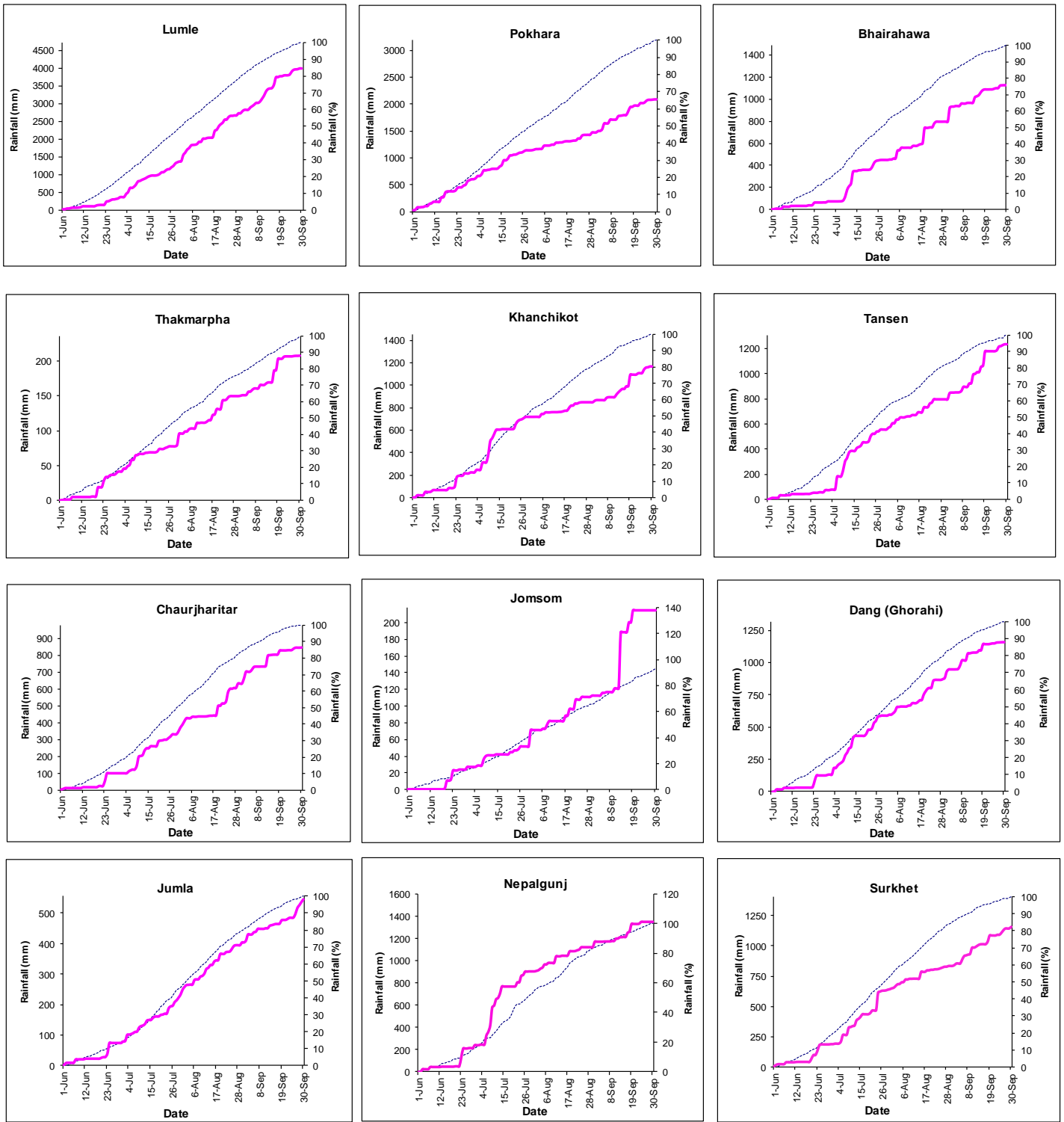
Monsoon Monitoring 2019
(1 June - 30 September)



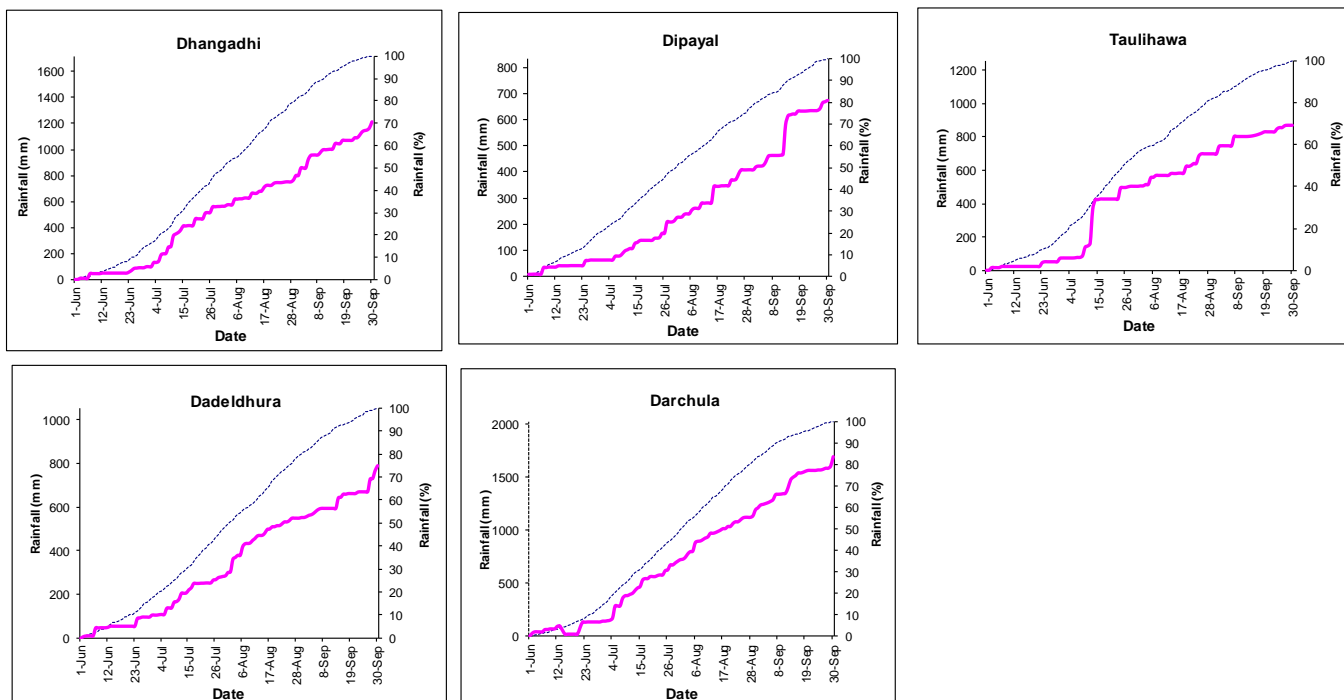
Note: The blue dotted lines (.....) in the above graphs indicate daily accumulated normal precipitation during monsoon season (June- September). Normal rainfall is the average of precipitation over 30 years period from 1981 -2010 and pink lines (—) in above figures indicate the daily accumulated precipitation of this monsoon season.



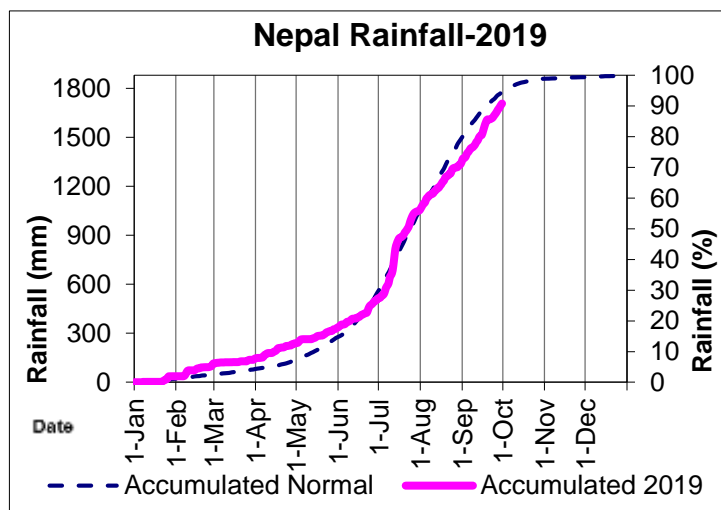
Note: The blue dotted lines (.....) in the above graphs indicate daily accumulated normal precipitation during monsoon season (June- September). Normal rainfall is the average of precipitation over 30 years period from 1981 -2010 and pink lines (—) in above figures indicate the daily accumulated precipitation of this monsoon season.



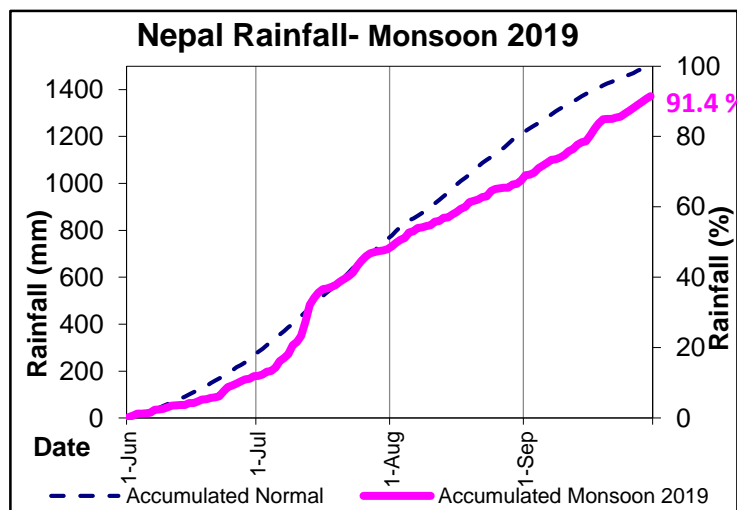
Note: The blue dotted lines (.....) in the above graphs indicate daily accumulated normal precipitation during monsoon season (June- September). Normal rainfall is the average of precipitation over 30 years period from 1981 -2010 and pink lines (—) in above figures indicate the daily accumulated precipitation of this monsoon season.



Note: The blue dotted lines (.....) in the above graphs indicate daily accumulated normal precipitation during monsoon season (June- September). Normal rainfall is the average of precipitation over 30 years period from 1981 -2010 and pink lines (—) in above figures indicate the daily accumulated precipitation of this monsoon season.



In the above graph, blue dotted line indicates the average of daily accumulated normal precipitation of 20 stations throughout the year (Jan - Dec) and pink solid line indicates the average of daily accumulated precipitation of this year. The 20 stations are shown in the map below.



In the above graph, blue dotted line indicates the average of daily accumulated normal precipitation of 20 stations during monsoon season (Jun - Sep) and pink solid line indicates the average of daily accumulated precipitation of this monsoon. The 20 stations are shown in the map below.



Map: Location map of 20 stations used in the above graphs.