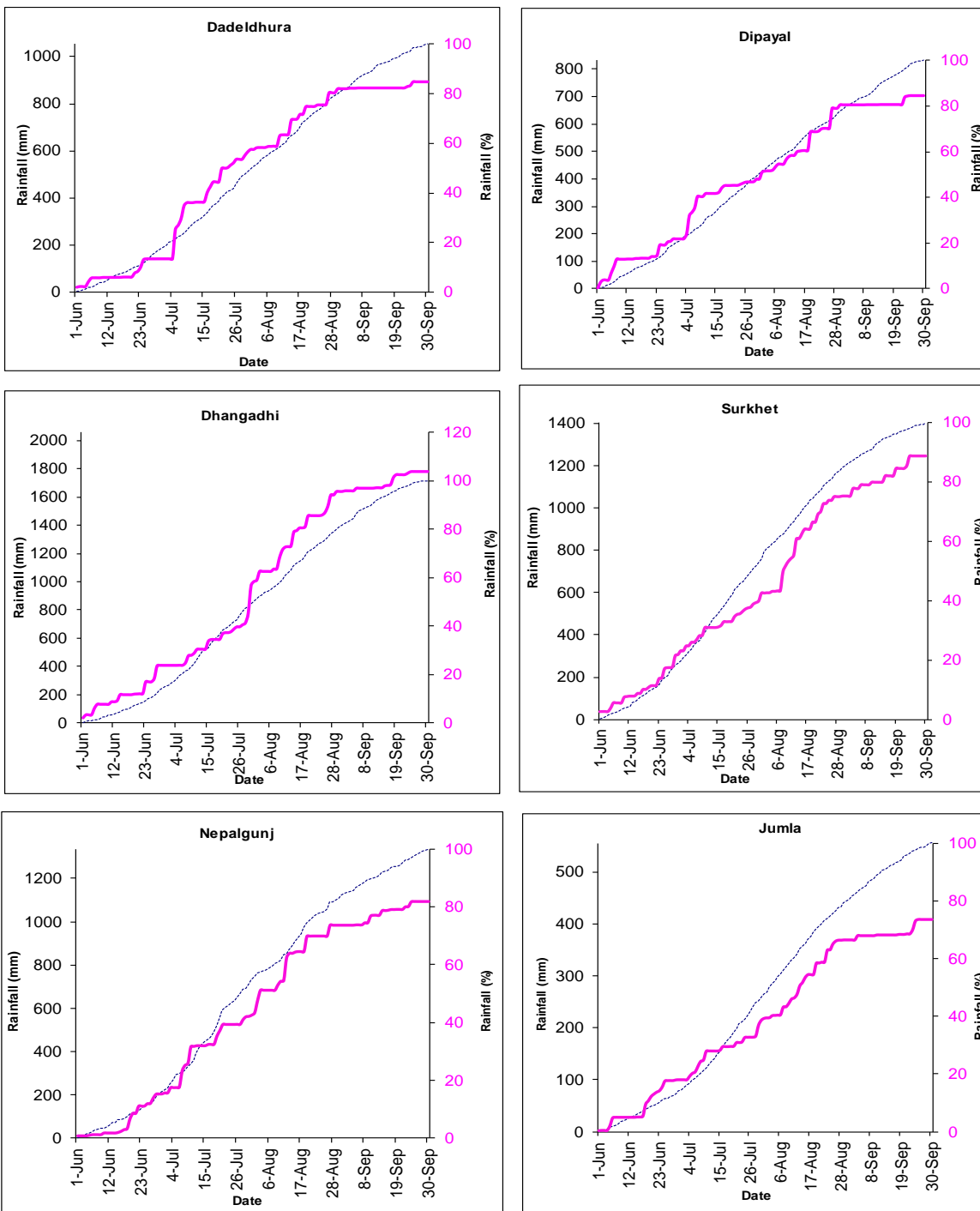




Government of Nepal  
Ministry of Energy, Water Resource and Irrigation  
Department of Hydrology and Meteorology  
Climate Division (Climate Analysis Section)  
Babarmahal, Kathmandu

30<sup>th</sup> September 2020

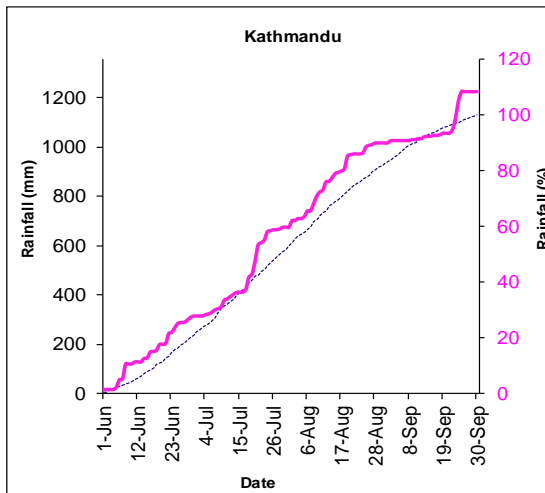
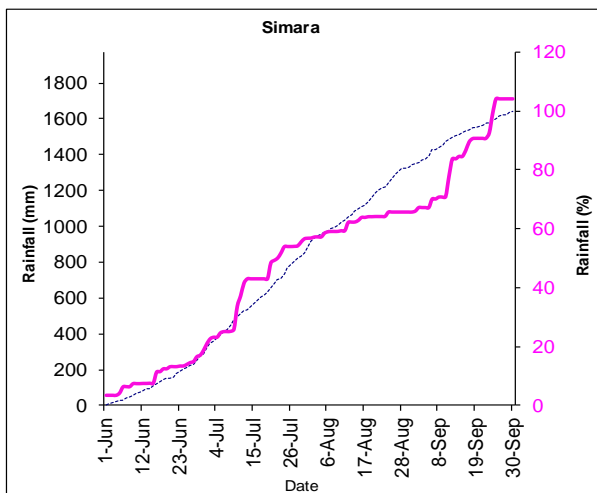
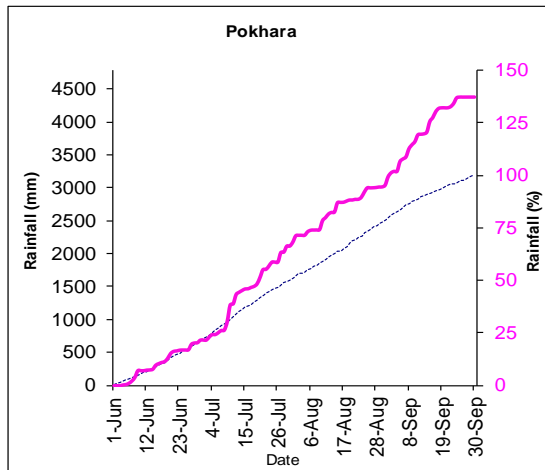
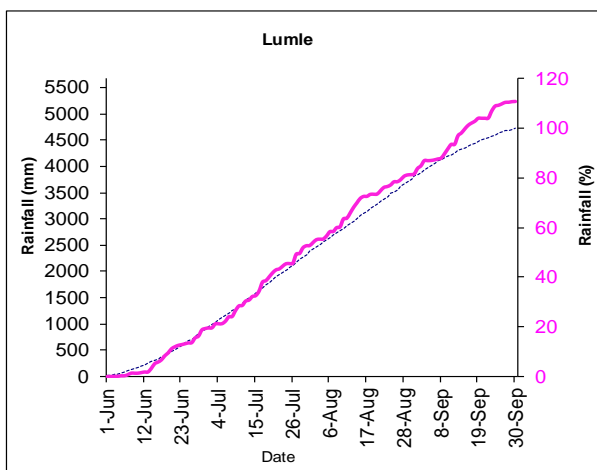
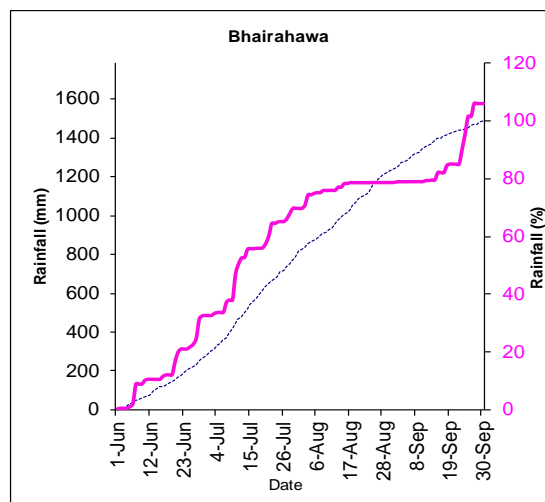
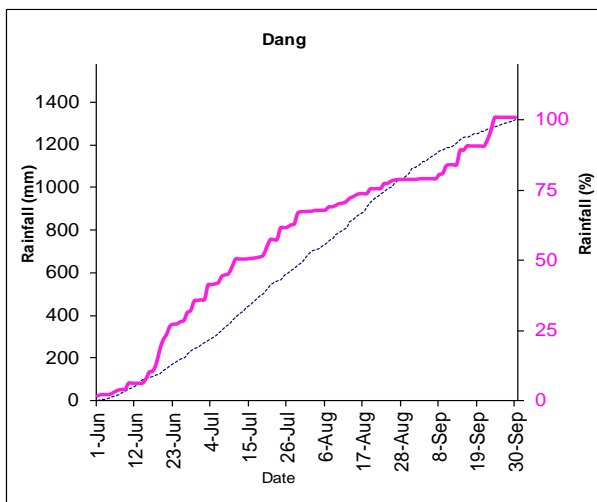
Monsoon (June - September 2020) Rainfall Monitoring



Note: The blue dotted lines (-----) in the above graphs indicate daily accumulated normal precipitation during monsoon season (June - September). Normal rainfall is the average of precipitation over 30 years period from 1981 -2010 and pink lines (—) in above graphs indicate the daily accumulated precipitation of this monsoon season.



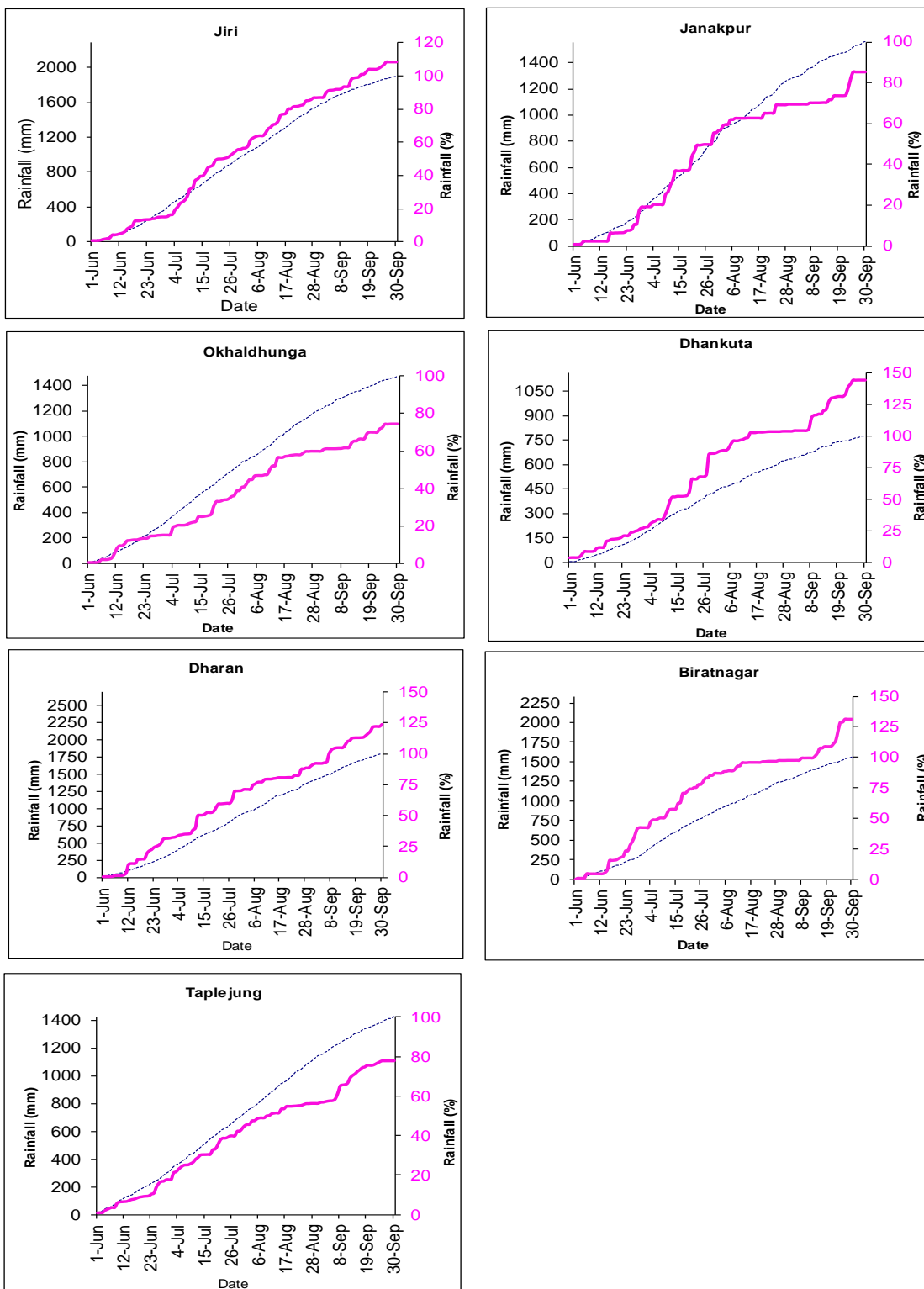
**Government of Nepal**  
**Ministry of Energy, Water Resource and Irrigation**  
**Department of Hydrology and Meteorology**  
**Climate Division (Climate Analysis Section)**  
Babarmahal, Kathmandu



*Note: The blue dotted lines (-----) in the above graphs indicate daily accumulated normal precipitation during monsoon season (June - September). Normal rainfall is the average of precipitation over 30 years period from 1981 -2010 and pink lines (—) in above graphs indicate the daily accumulated precipitation of this monsoon season.*



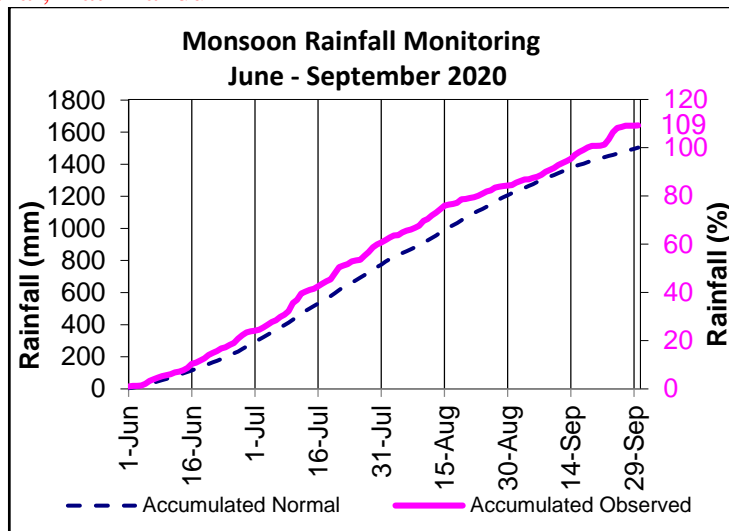
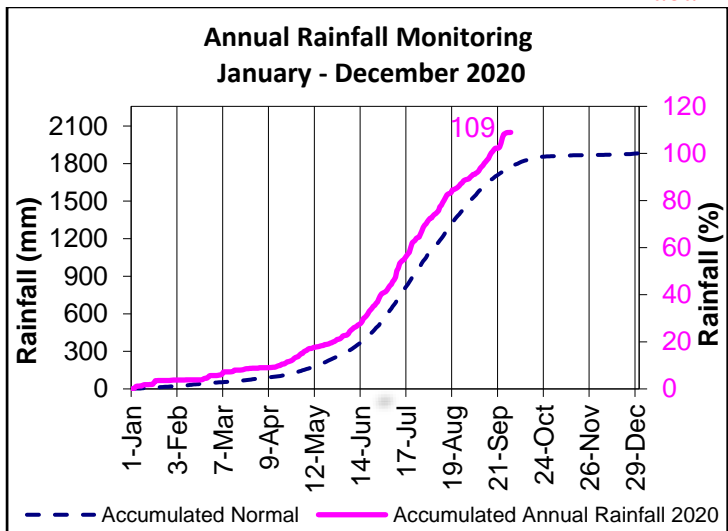
**Government of Nepal**  
**Ministry of Energy, Water Resource and Irrigation**  
**Department of Hydrology and Meteorology**  
**Climate Division (Climate Analysis Section)**  
Babarmahal, Kathmandu



*Note: The blue dotted lines (-----) in the above graphs indicate daily accumulated normal precipitation during monsoon season (June - September). Normal rainfall is the average of precipitation over 30 years period from 1981 -2010 and pink lines (—) in above graphs indicate the daily accumulated precipitation of this monsoon season.*

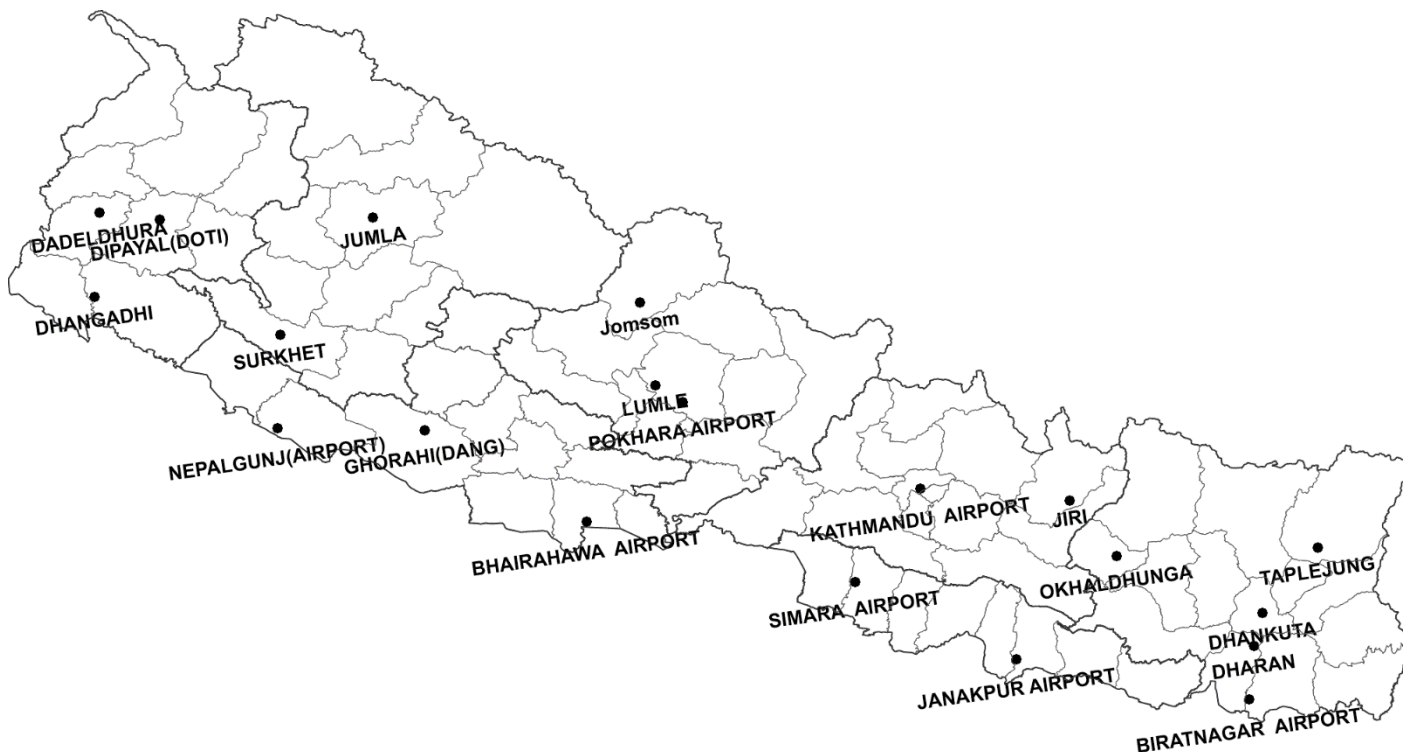


**Government of Nepal**  
**Ministry of Energy, Water Resource and Irrigation**  
**Department of Hydrology and Meteorology**  
**Climate Division (Climate Analysis Section)**  
 Babarmahal, Kathmandu



In the above graph, blue dashed (----) line indicates the average of daily accumulated normal precipitation of 20 stations throughout the year (Jan - Dec) and pink solid line (—) indicates the average of daily accumulated precipitation of this year. The 20 stations are shown in the map below.

In the above graph, blue dashed (----) line indicates the average of daily accumulated normal precipitation of 20 stations during monsoon season (June-September) and pink solid line (—) indicates the average of daily accumulated precipitation of this monsoon. The 20 stations are shown in the map below.



Map: Location map of 20 stations used in the above graphs