

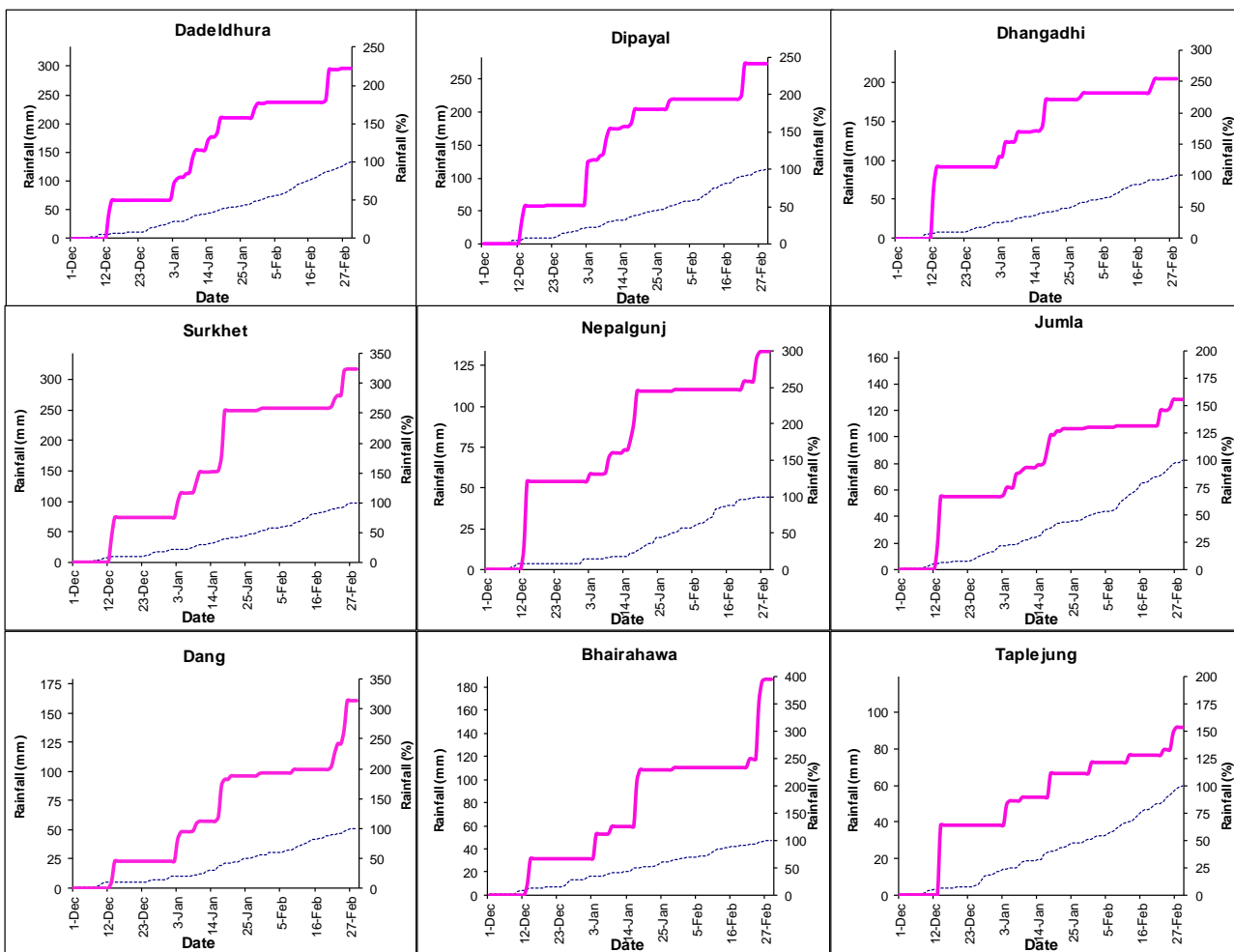


Government of Nepal
Ministry of Energy, Water Resource and Irrigation
Department of Hydrology and Meteorology
Climate Division (Climate Analysis Section)
 Babarmahal, Kathmandu



February 29, 2020

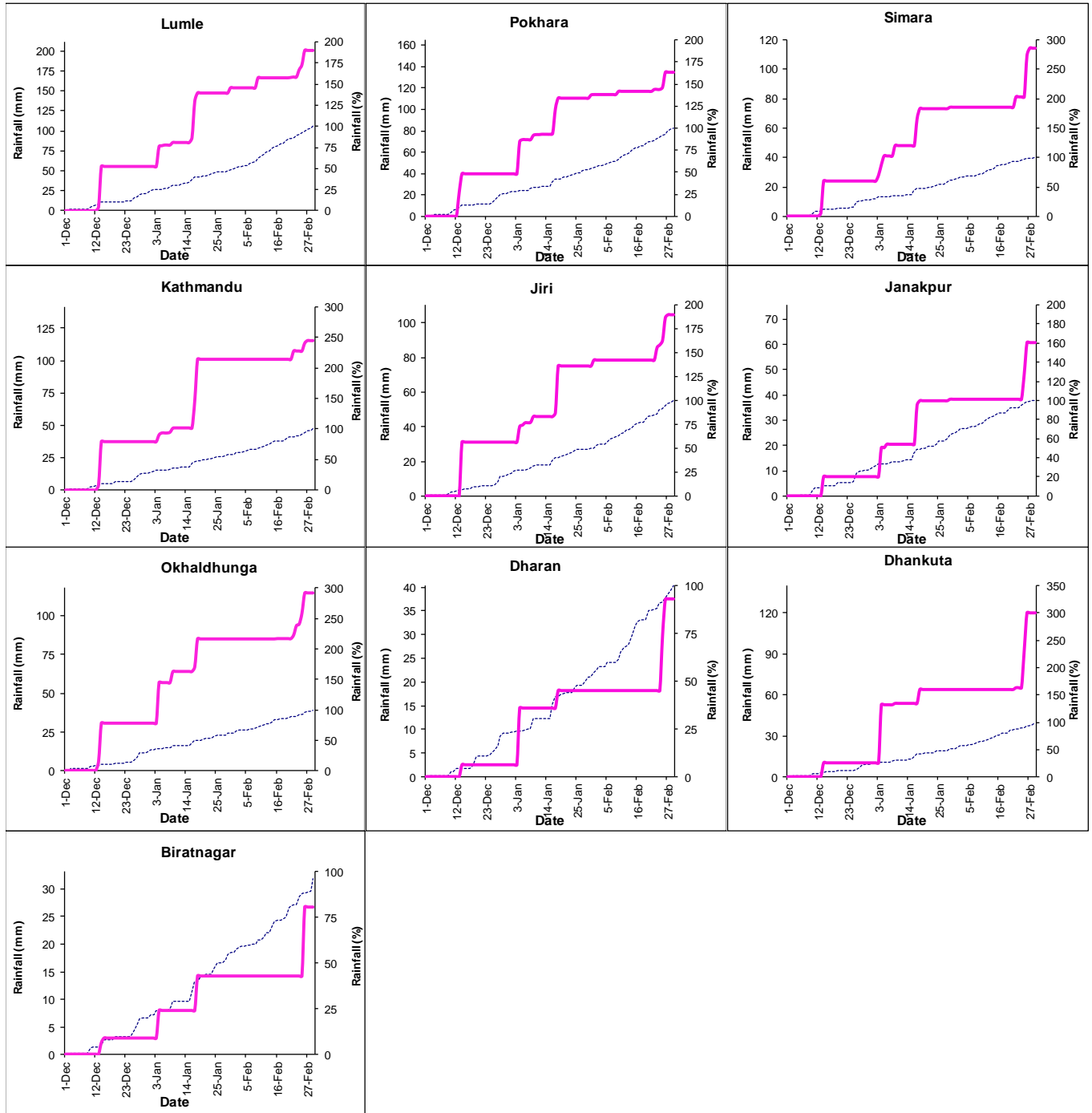
Winter (December 2019 – February 2020) Rainfall Monitoring



Note: The blue dotted lines (-----) in the above graphs indicate daily accumulated normal precipitation during winter season (December-February). Normal rainfall is the average of precipitation over 30 years period from 1981 -2010 and pink lines (—) in above graphs indicate the daily accumulated precipitation of this winter season.



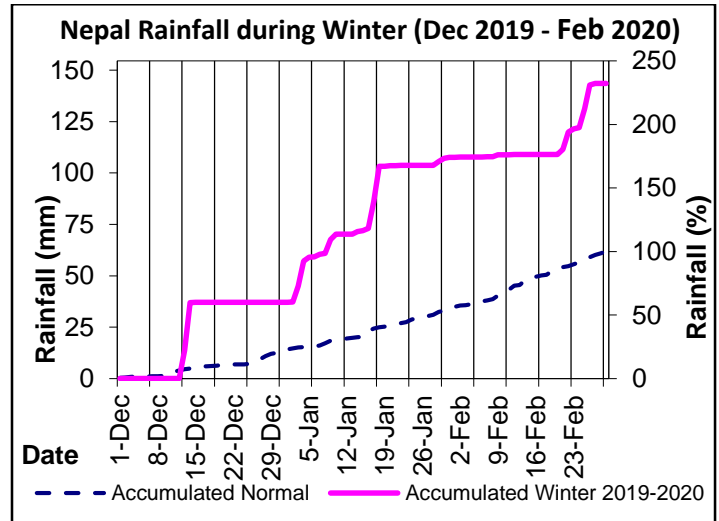
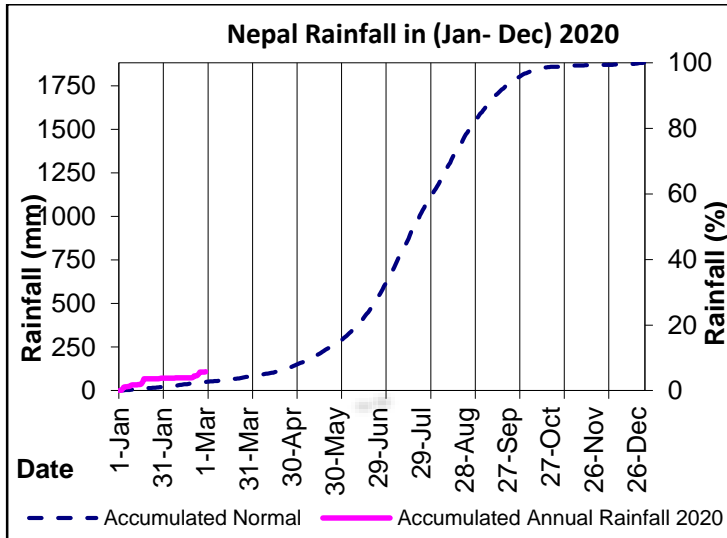
Government of Nepal
Ministry of Energy, Water Resource and Irrigation
Department of Hydrology and Meteorology
Climate Division (Climate Analysis Section)
Babarmahal, Kathmandu



Note: The blue dotted lines (-----) in the above graphs indicate daily accumulated normal precipitation during winter season (December-February). Normal rainfall is the average of precipitation over 30 years period from 1981 -2010 and pink lines (—) in above graphs indicate the daily accumulated precipitation of this winter season.

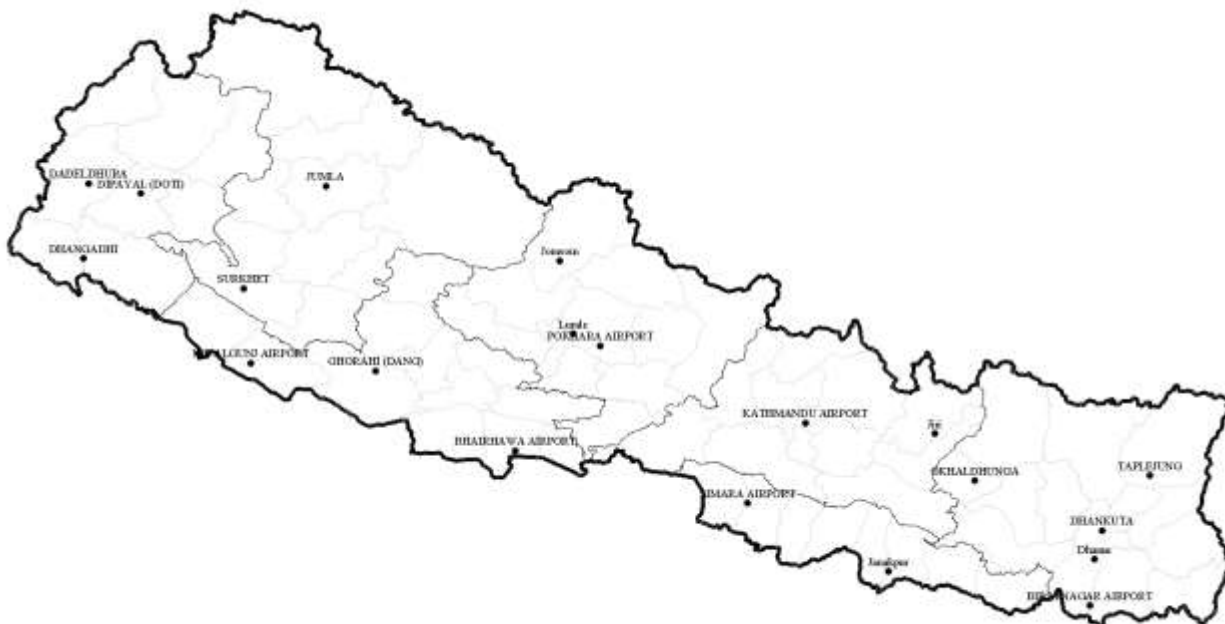


Government of Nepal
Ministry of Energy, Water Resource and Irrigation
Department of Hydrology and Meteorology
Climate Division (Climate Analysis Section)
 Babarmahal, Kathmandu



In the above graph, blue dashed (----) line indicates the average of daily accumulated normal precipitation of 20 stations throughout the year (Jan - Dec) and pink solid line (—) indicates the average of daily accumulated precipitation of this year. The 20 stations are shown in the map below.

In the above graph, blue dashed (----) line indicates the average of daily accumulated normal precipitation of 20 stations during winter season (Dec - Feb) and pink solid line (—) indicates the average of daily accumulated precipitation of this winter. The 20 stations are shown in the map below.



Map: Location map of 20 stations used in the above graphs