

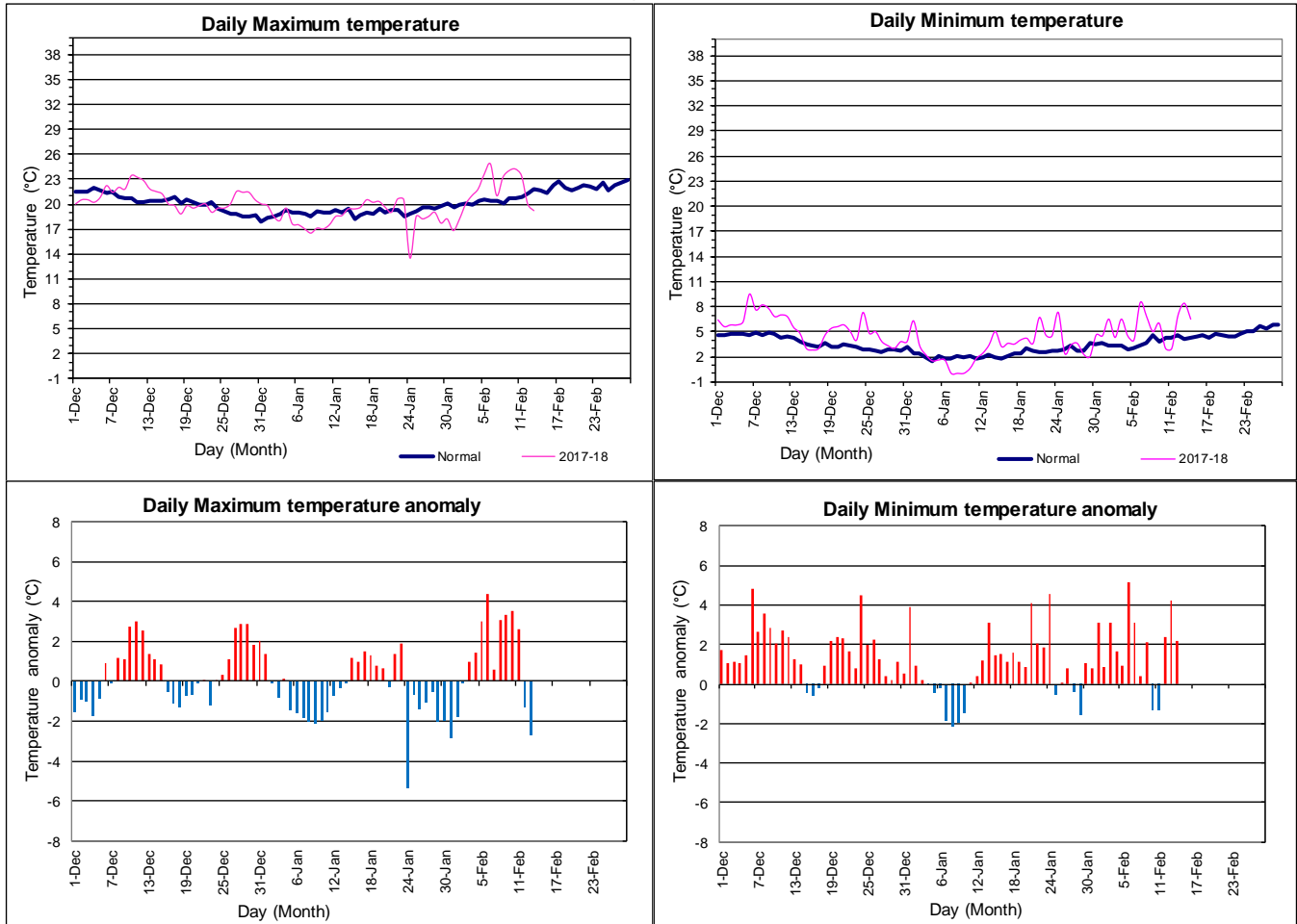


Government of Nepal
 Ministry of Population and Environment
 Department of Hydrology and Meteorology
 Nagpokhari, Kathmandu, Nepal.

Government of Nepal

WINTER (December- February) (2017-18)

Daily Temperature Monitoring at Kathmandu Airport (Winter)

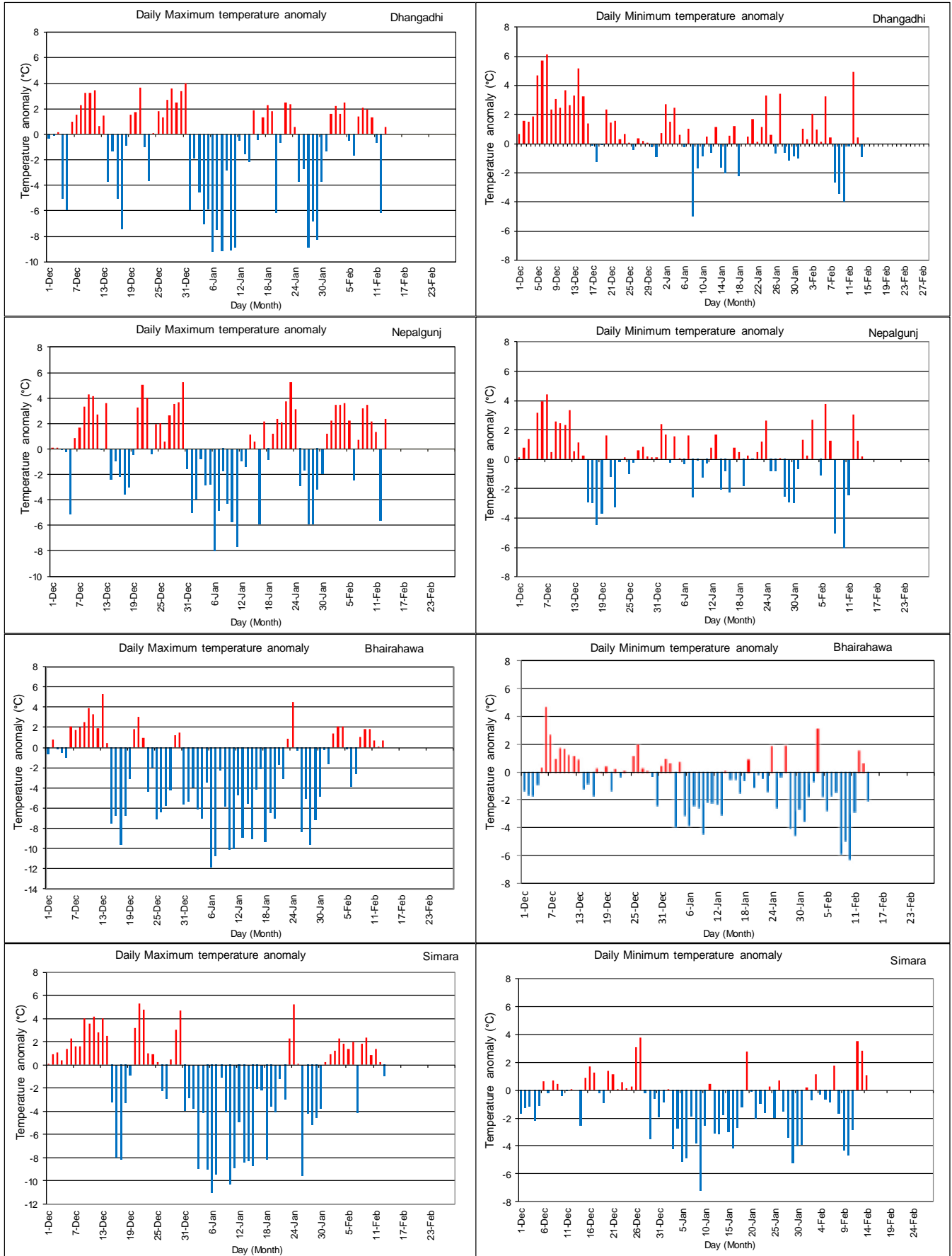


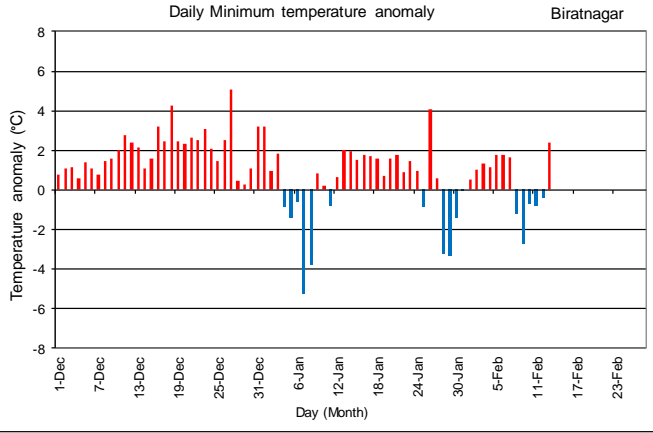
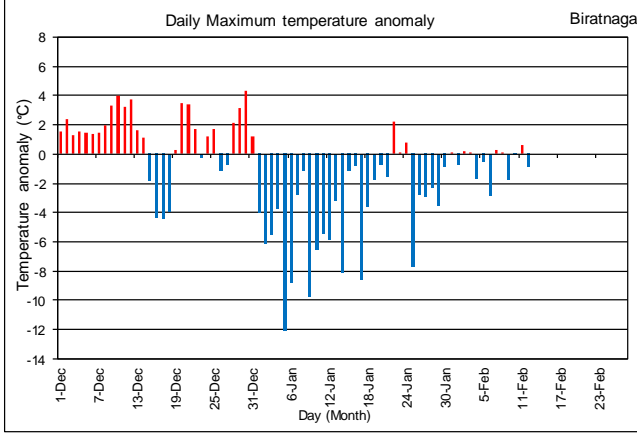
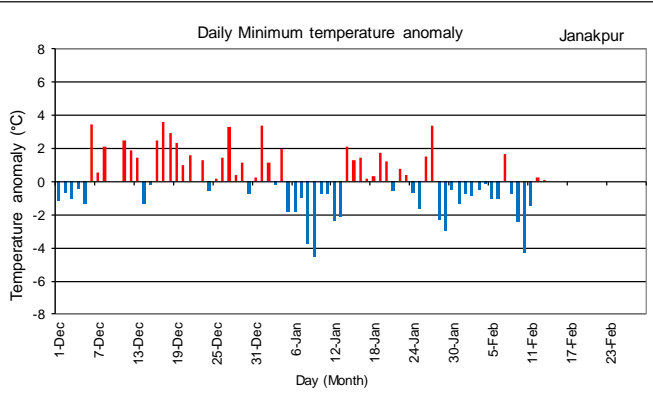
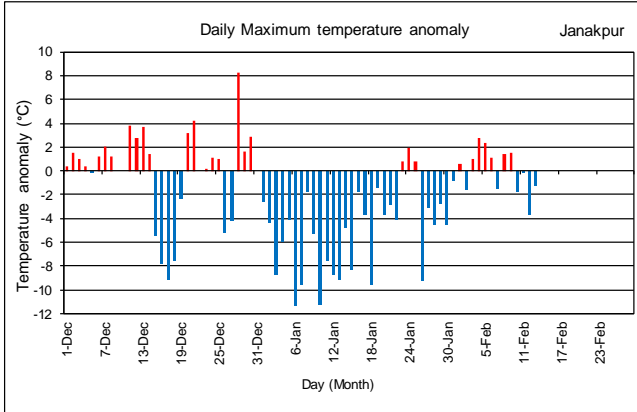
Note: Winter is the coldest and driest of all the seasons in this country. During the recent years there has been the continuation of the winter fog in the Tarai region with numerous casualties. Tarai temperature monitoring is key to study the winter fog during the winter season which helps to reduce the effect of the season by building awareness to the public. This winter the forecast for the rain is below normal to near normal over the country.

-DHM



Temperature Monitoring in Terai Region (Winter)





Daily Monitoring 2018

