

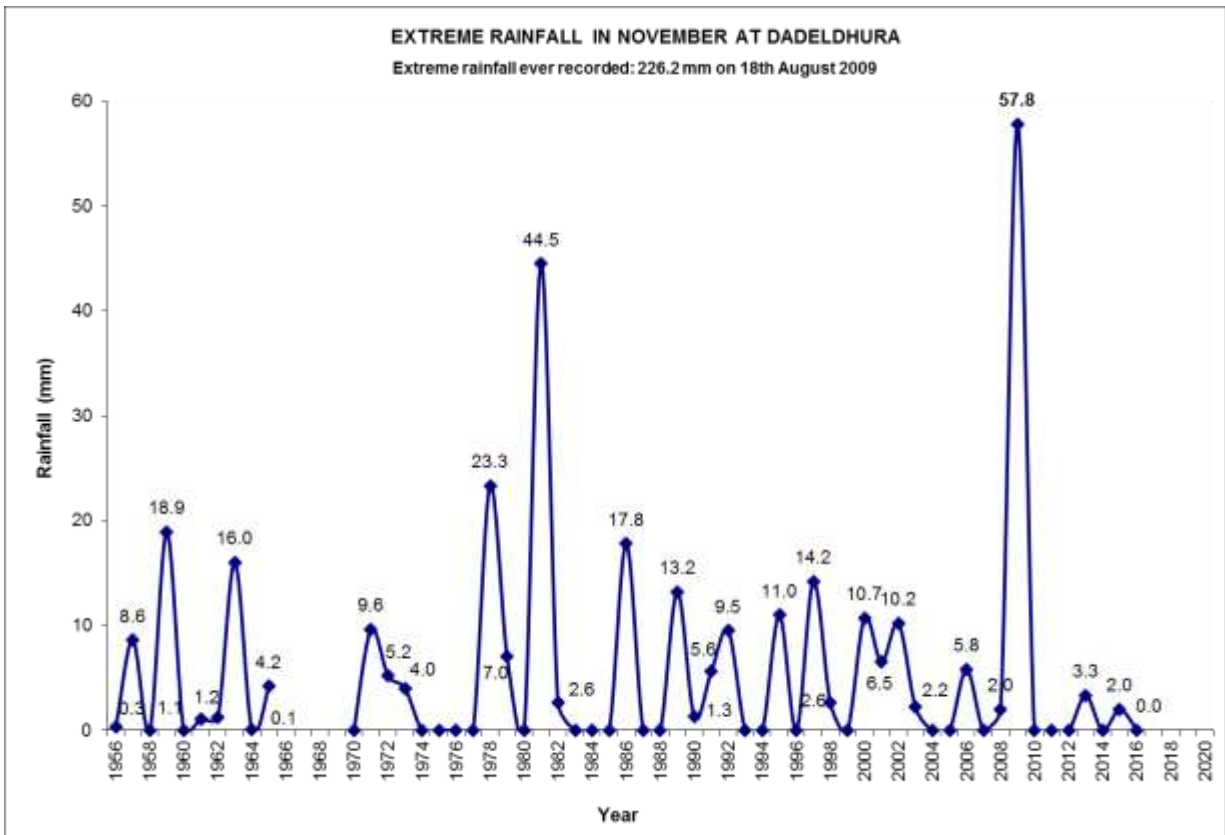


Government of Nepal

Government of Nepal
Ministry of Population and Environment
Department of Hydrology and Meteorology
Naxal, Kathmandu, Nepal.

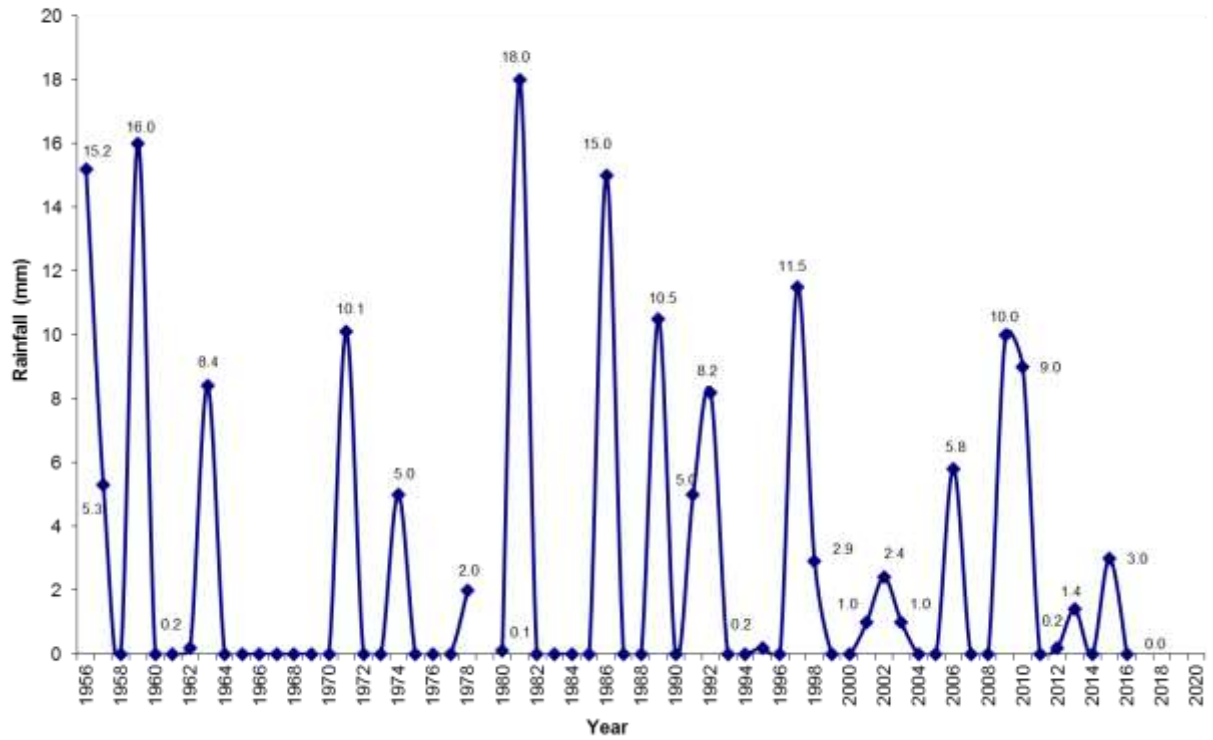
EXTREME RAINFALL OF MONTH NOVEMBER
AT SELECTED STATIONS

Note: November is the driest month in the Nepalese calendar. So the possibility of no rain is highest in this month. This causes difficulty especially during the prediction of the rain for the forecast. The stations selected in this monitoring shows the maximum rain recorded in the November at Dhankuta station at Eastern region of Nepal of 139.0mm on 11th November 1995. Dang seems to one of the driest in this month having no rain in most of the years. Surkhet, Nepalgunj and Simara are the next with a lot of dry November. Most of the stations have decreasing trend of rainfall in November (Table 1).



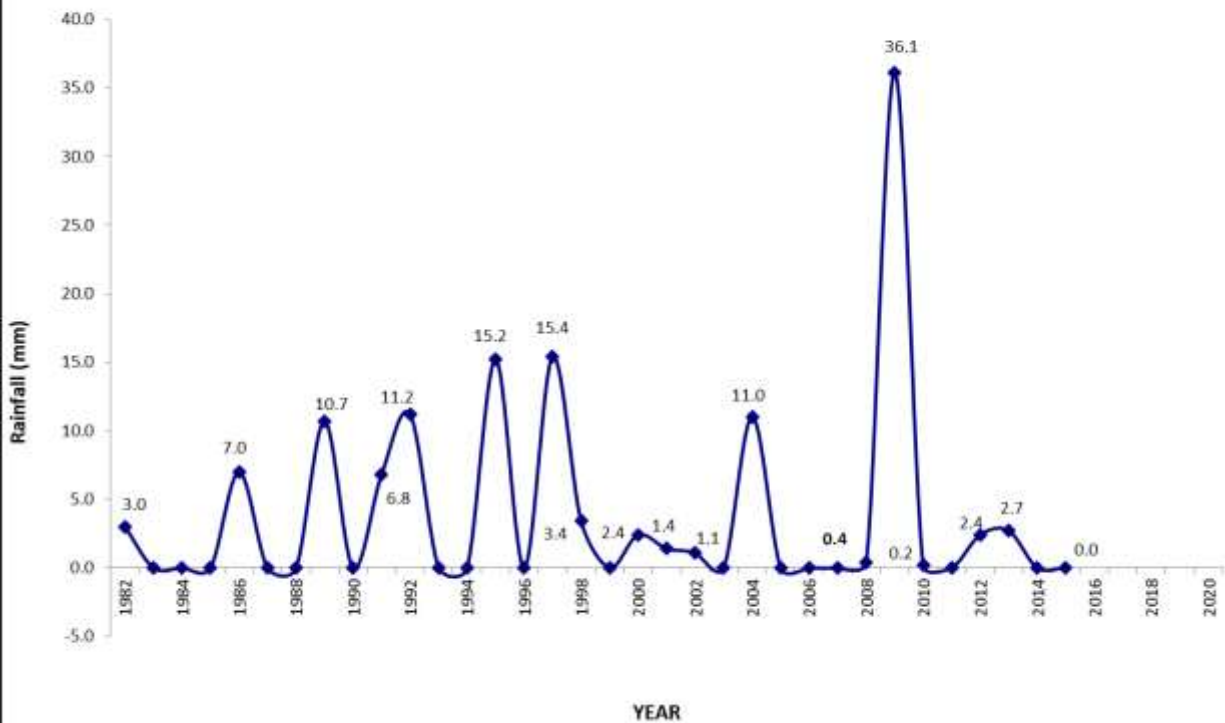
EXTREME RAINFALL IN NOVEMBER AT DHANGADHI

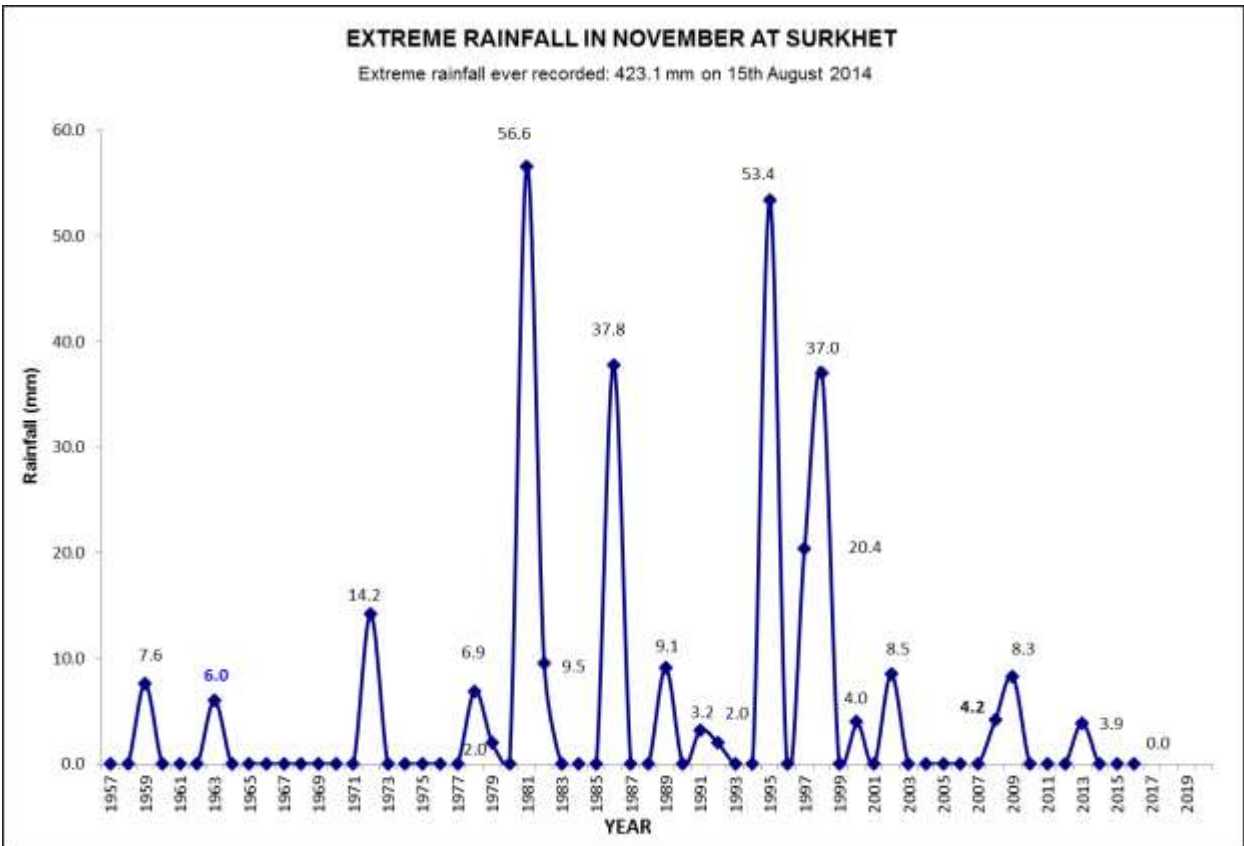
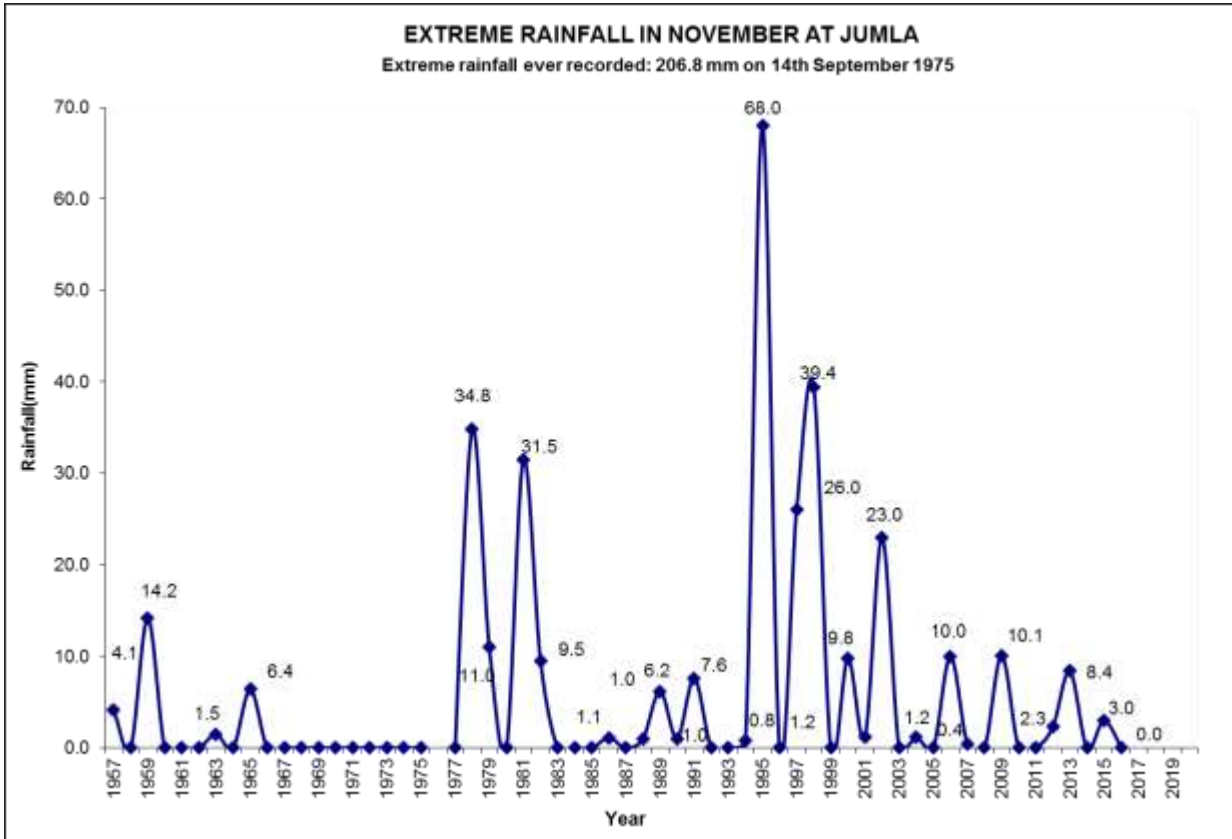
Extreme rainfall ever recorded: 267 mm on 11th September 1983

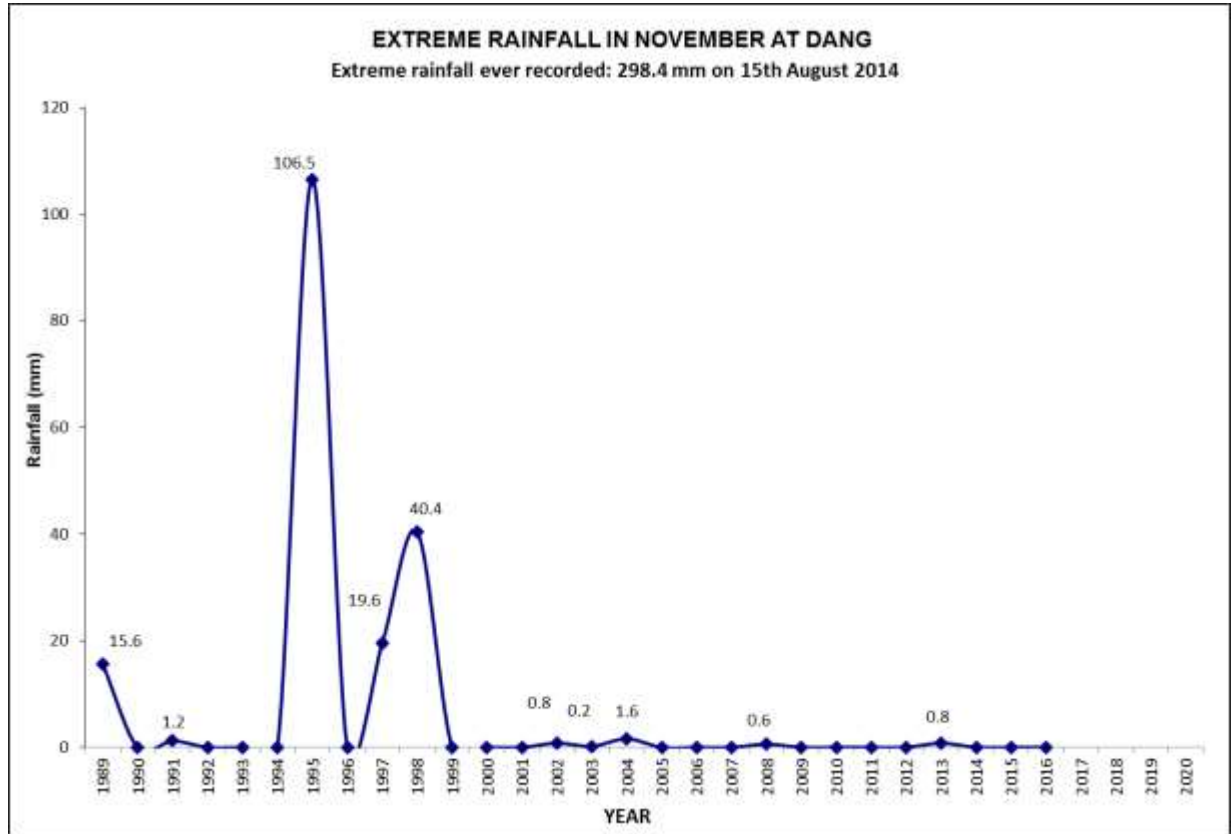
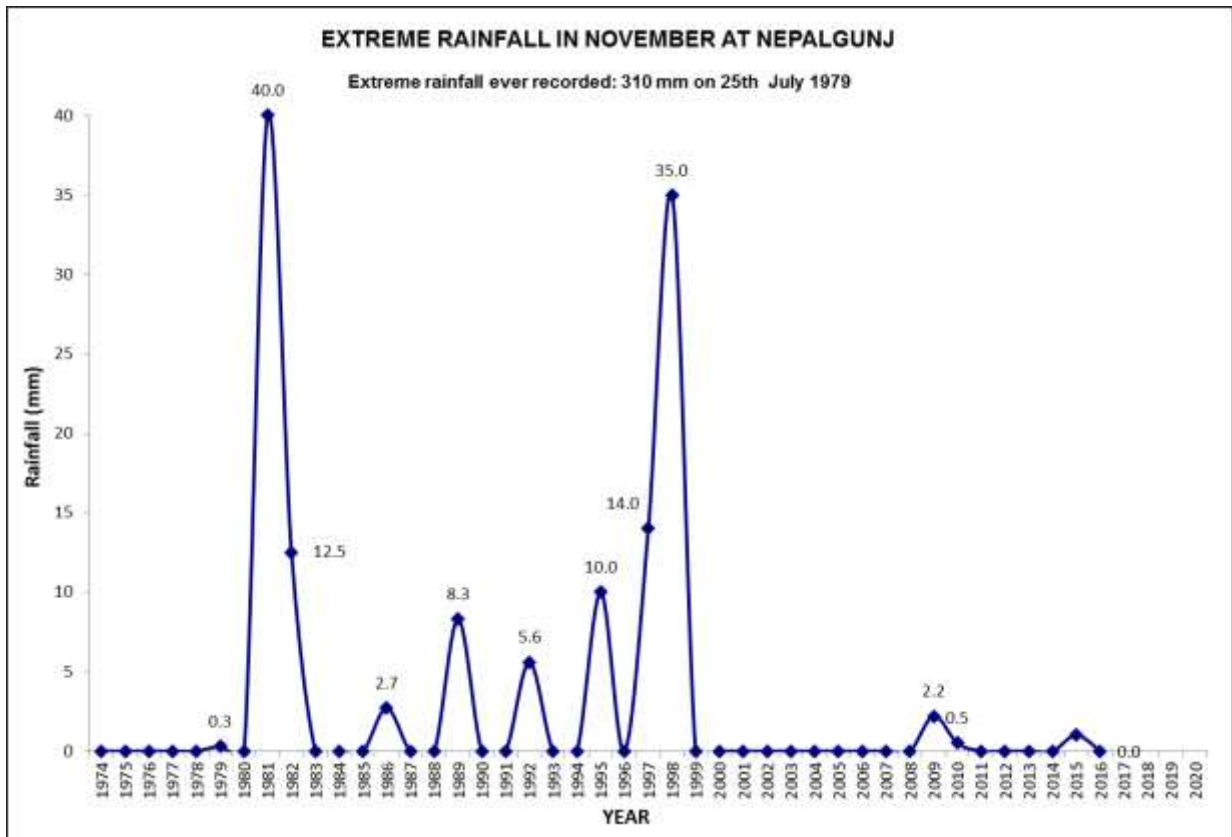


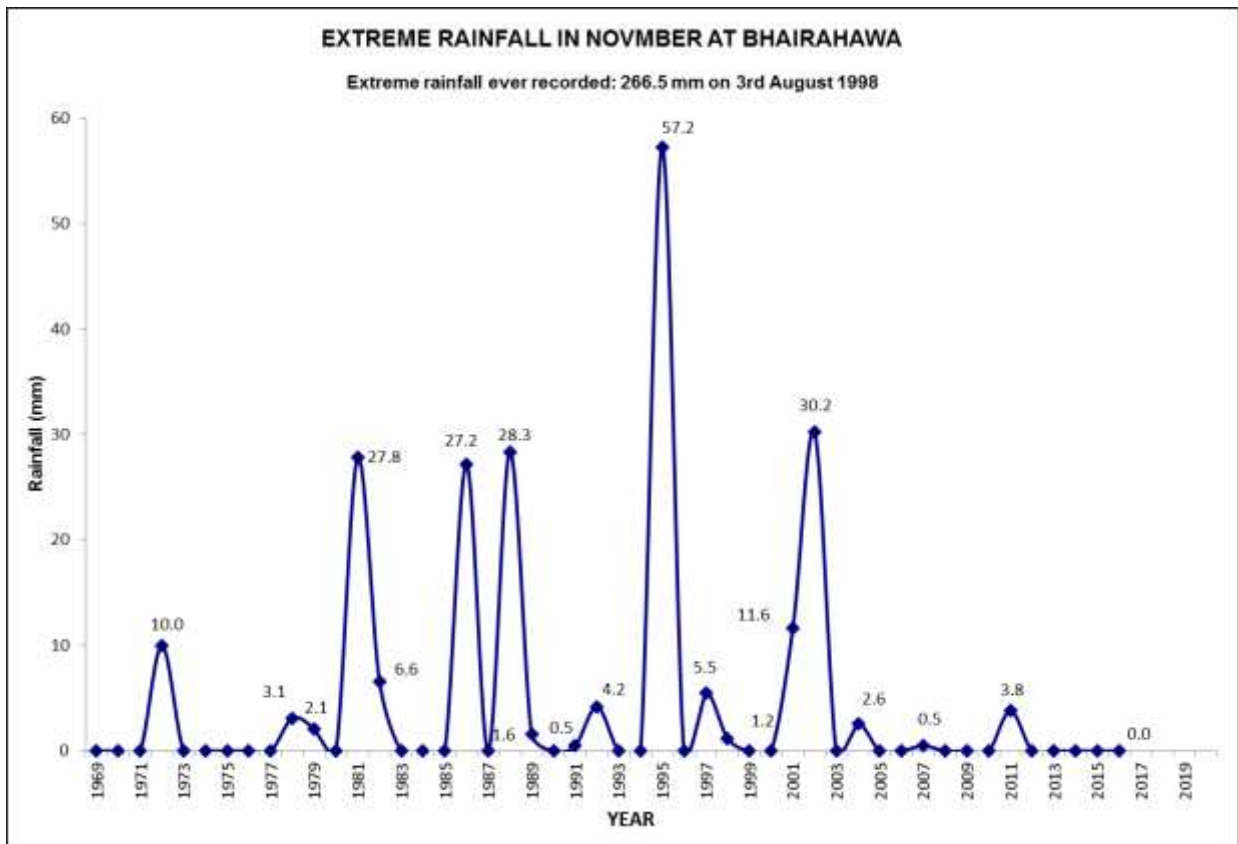
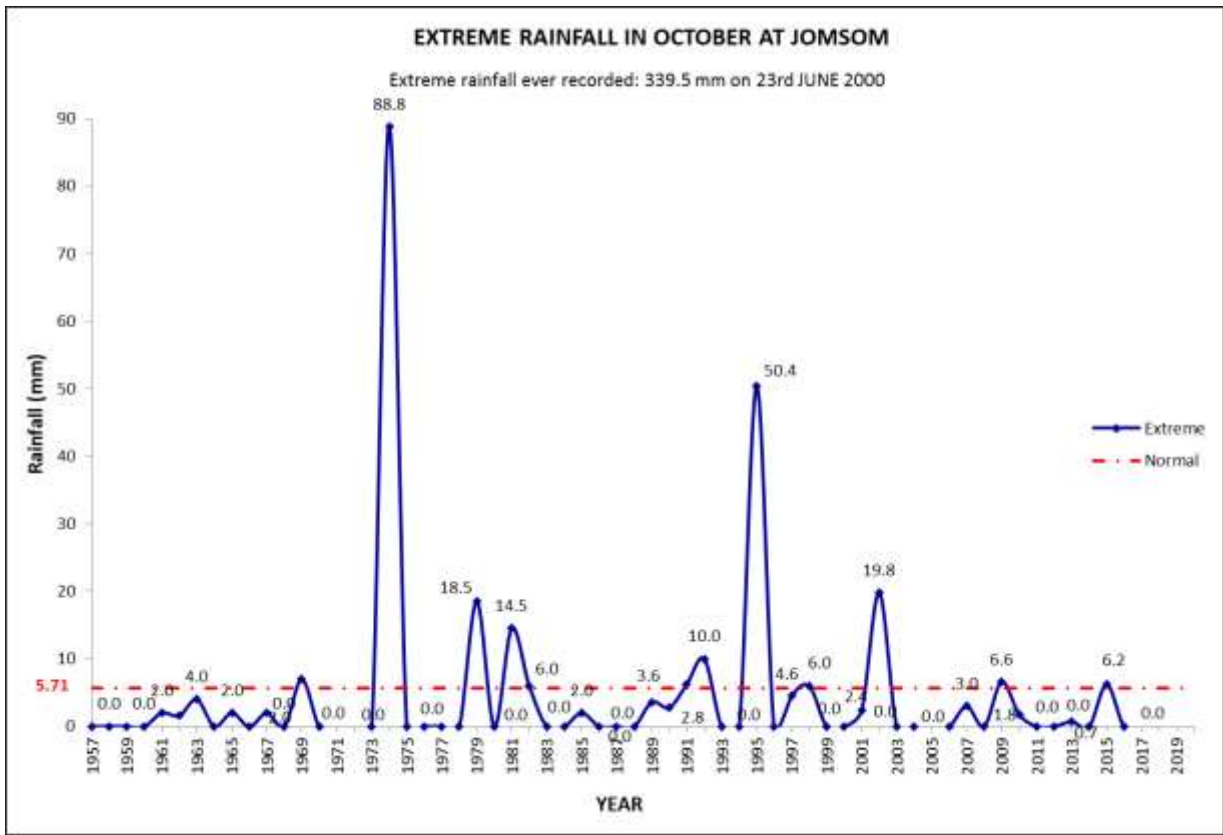
EXTREME RAINFALL IN NOVEMBER AT DIPAYAL

Extreme rainfall ever recorded : 245.7mm on 6th June 2009



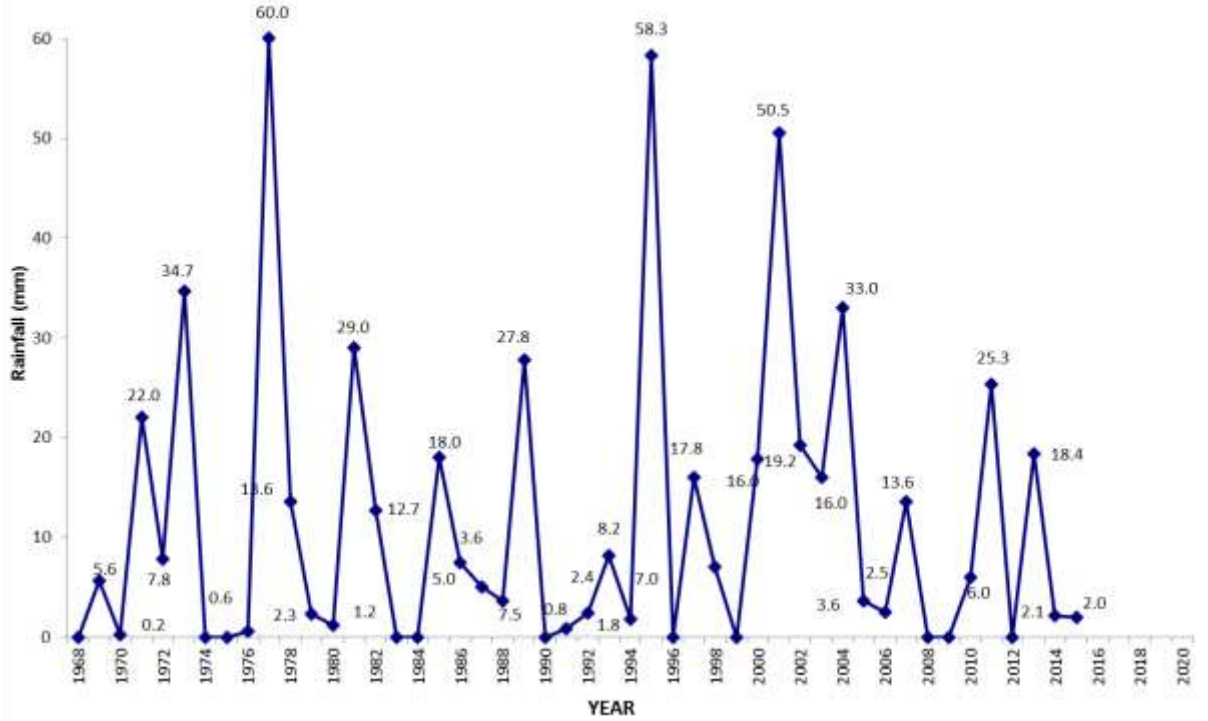






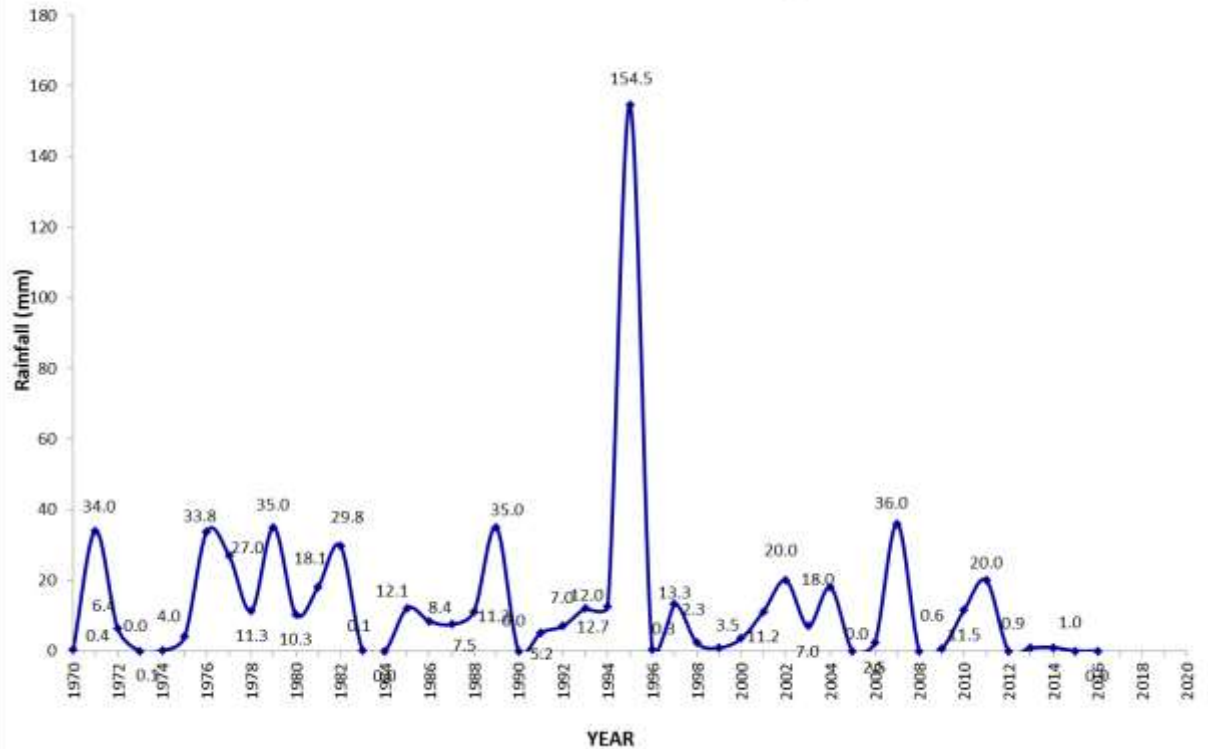
EXTREME RAINFALL IN NOVEMBER AT POKHARA

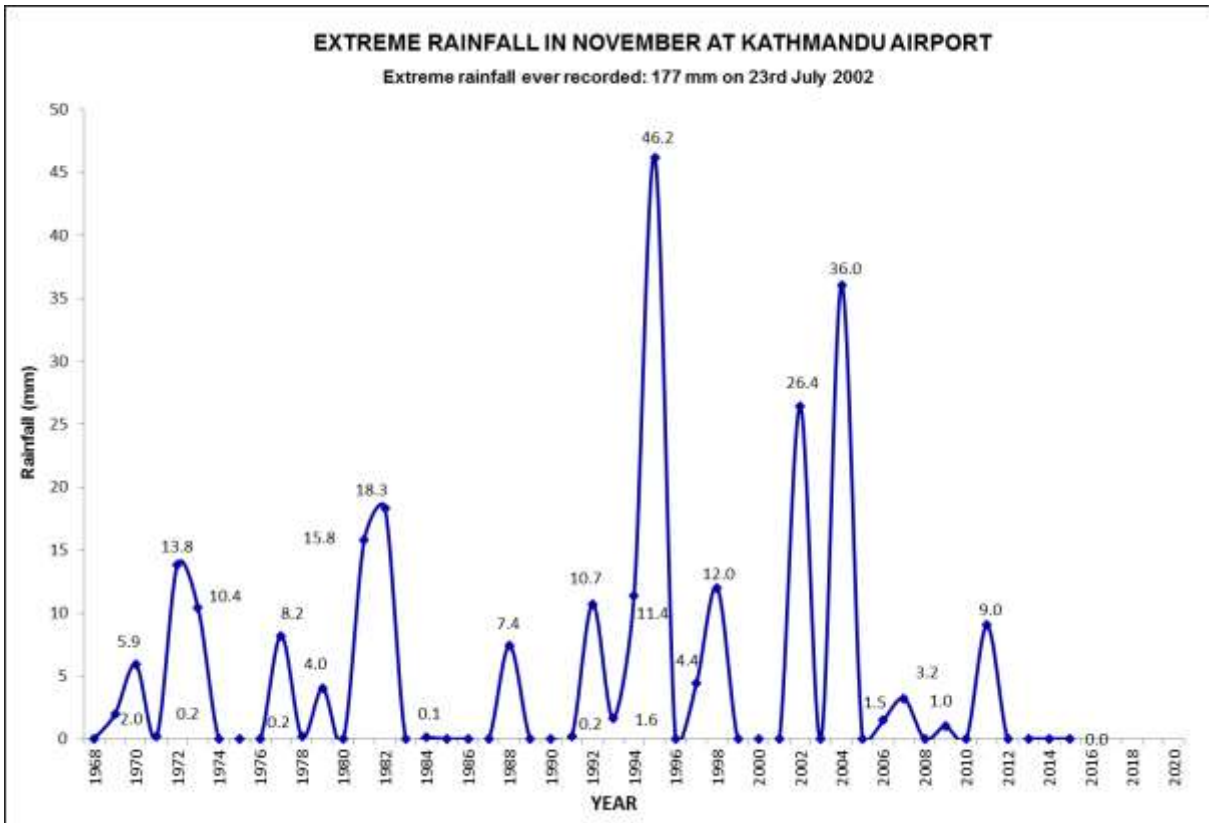
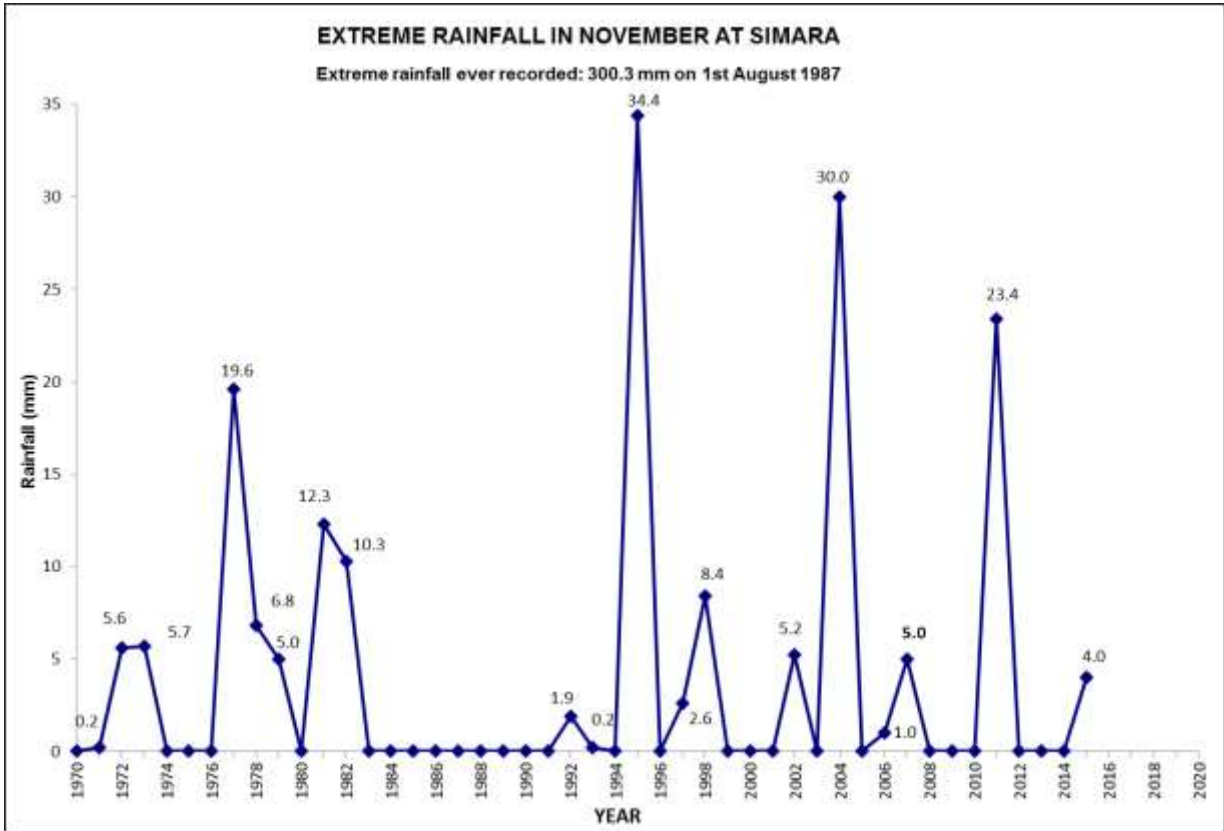
Extreme rainfall ever recorded: 357.0 mm on 18th August 2001

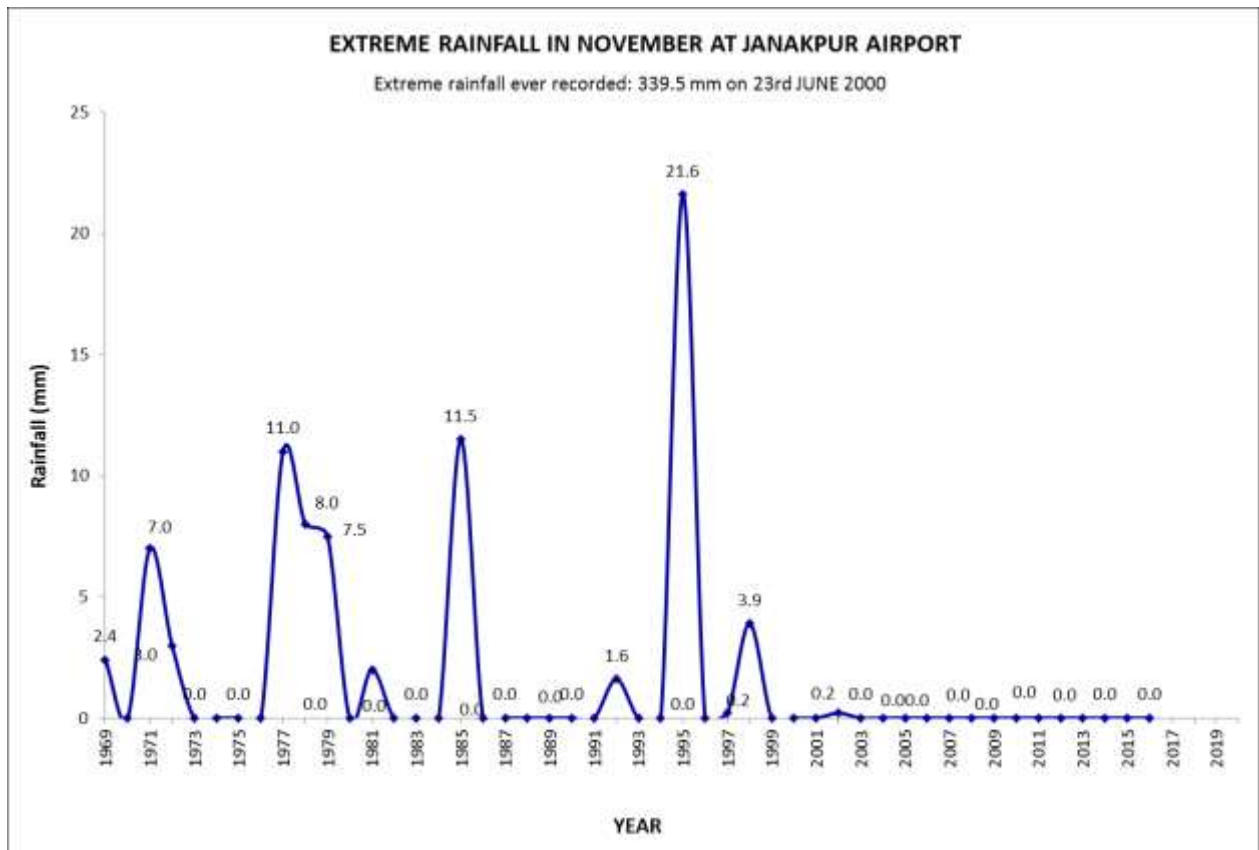
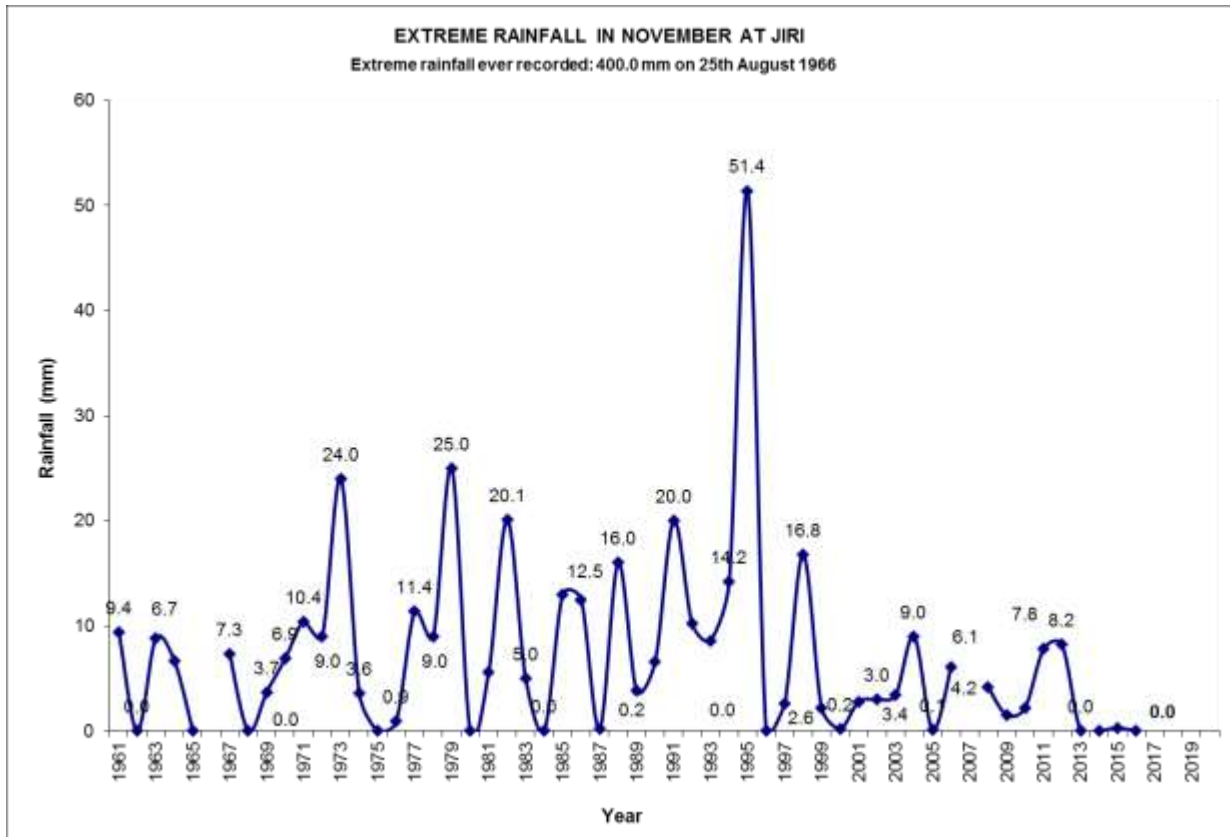


EXTREME RAINFALL IN NOVEMBER AT LUMLE

Extreme rainfall ever recorded: 295.0mm on 30th August 1998

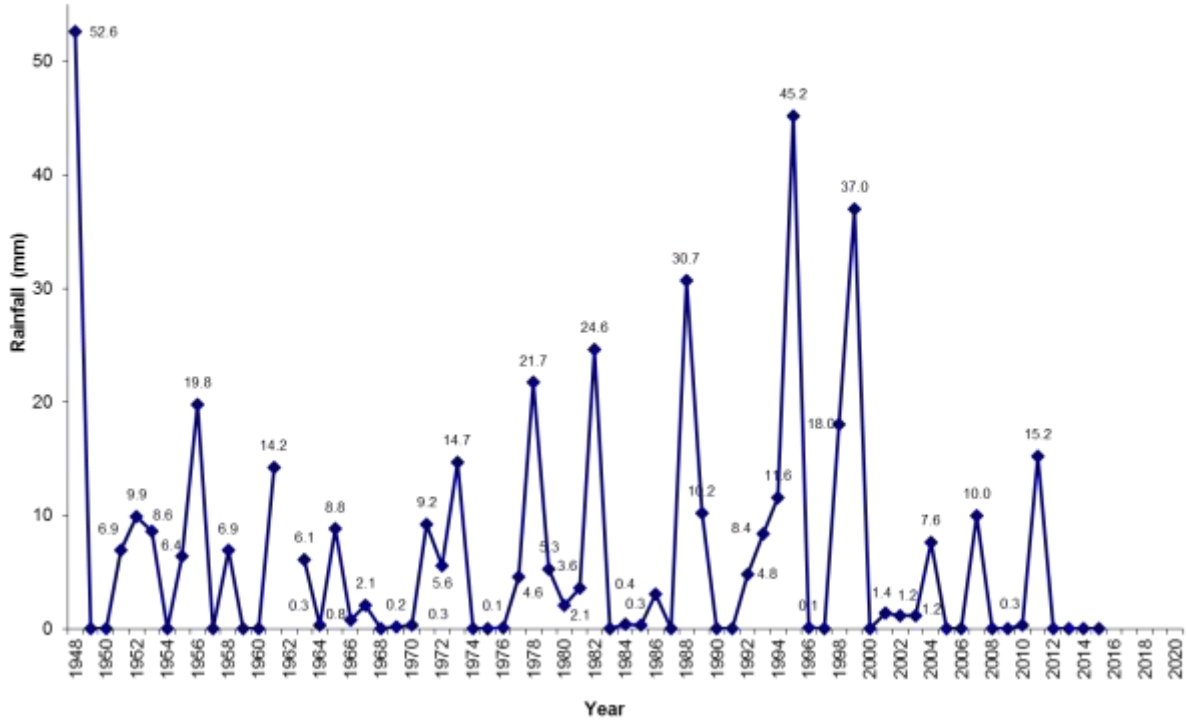






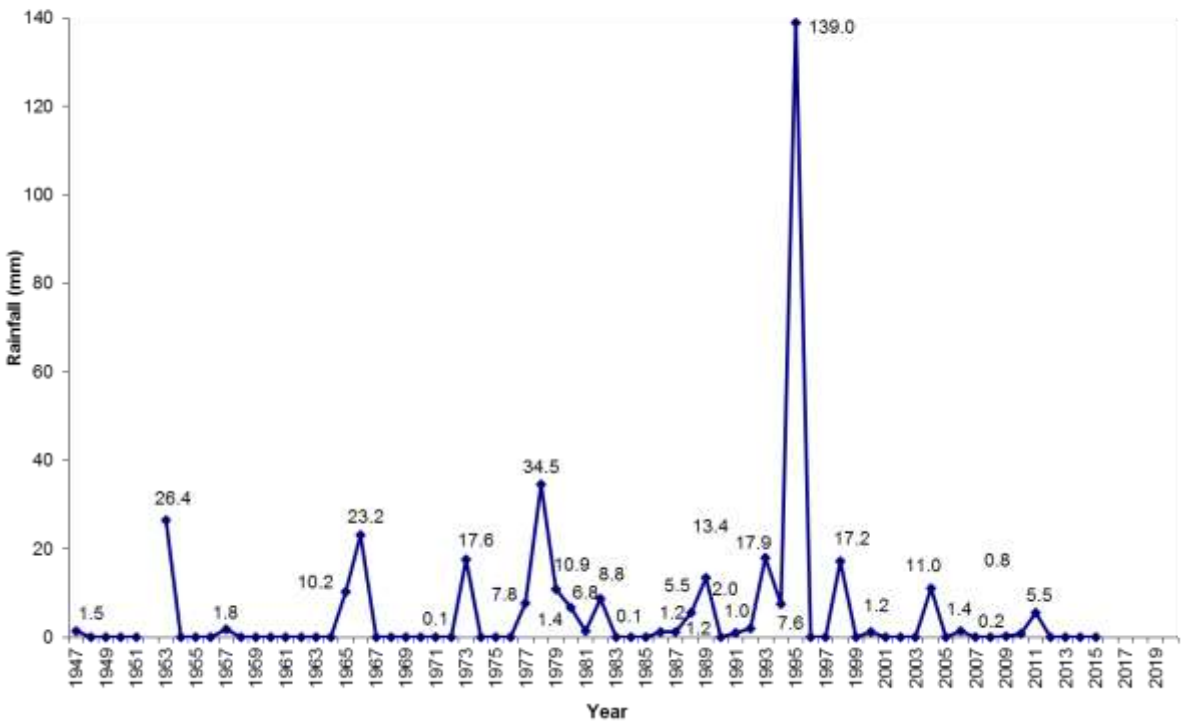
EXTREME RAINFALL IN NOVEMBER AT OKHALDHUNGA

Extreme rainfall ever recorded: 170.4 mm on 10th July 2004



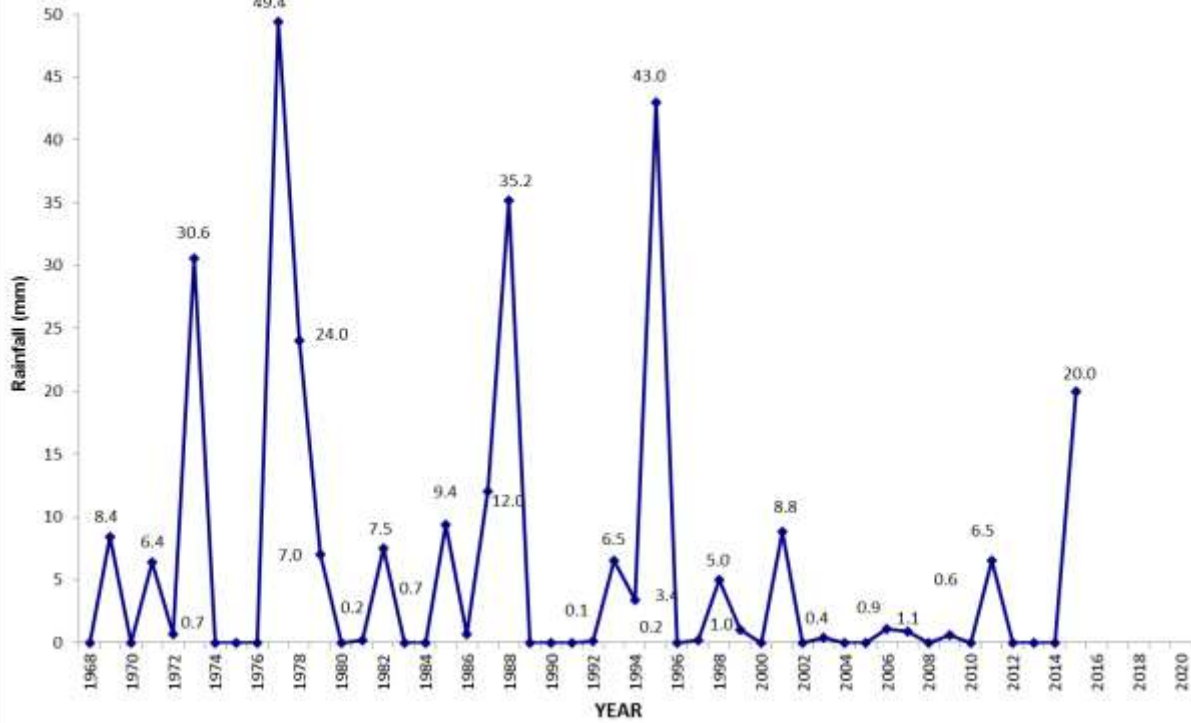
EXTREME RAINFALL IN NOVEMBER AT DHANKUTA

Extreme rainfall ever recorded: 265 mm on 24th June 1961



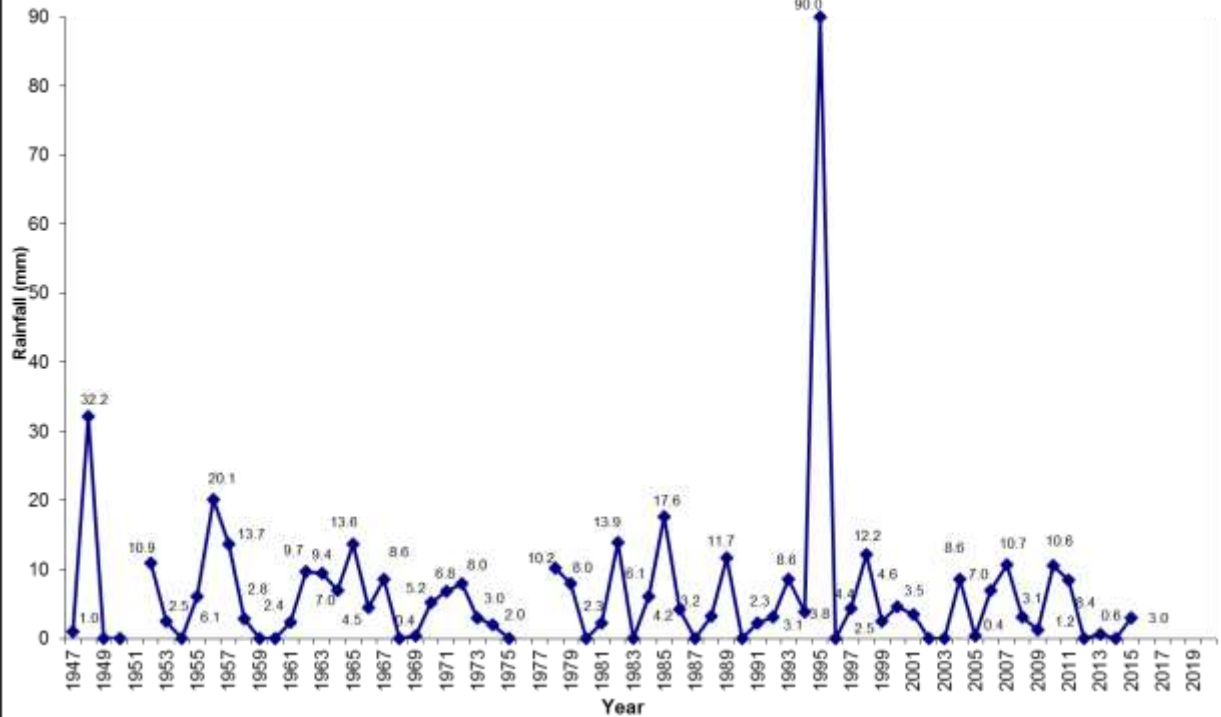
EXTREME RAINFALL IN NOVEMBER AT BIRATNAGAR

Extreme rainfall ever recorded: 405.0 mm on 2nd July 1974



EXTREME RAINFALL IN NOVEMBER AT TAPLEJUNG

Extreme rainfall ever recorded: 143.1 mm on 14th July 2002

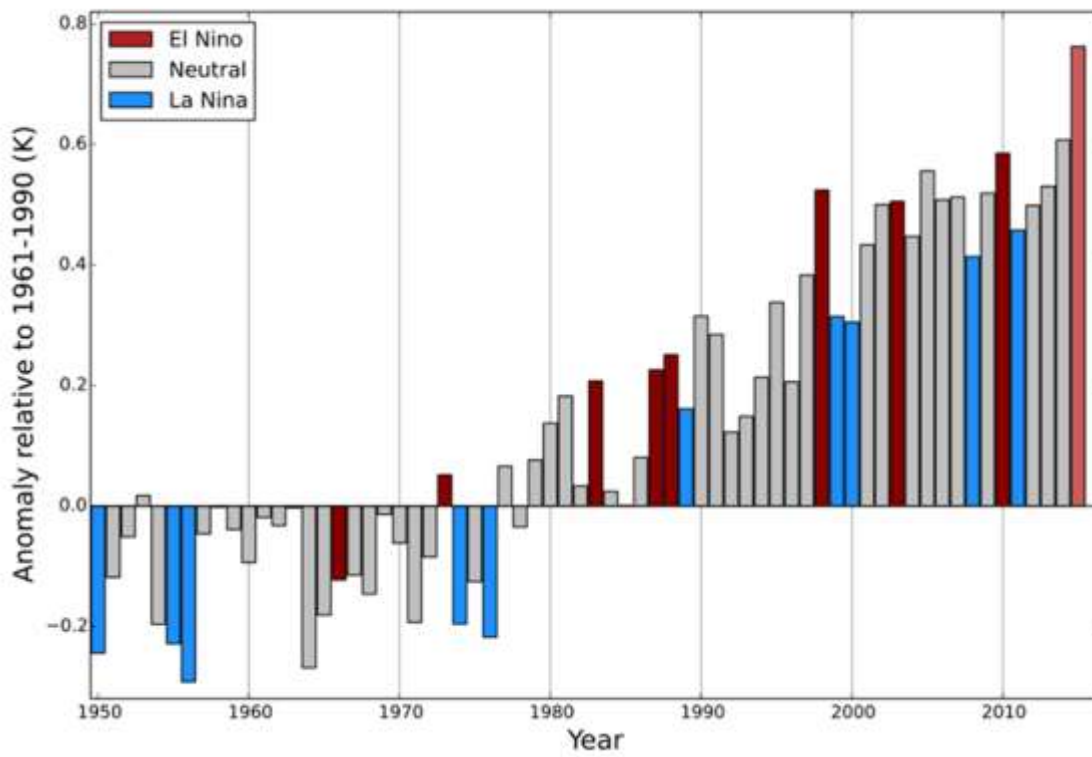


Rainfall Trend	November
Dadeldhura	No trend
Dipayal	Falling
Dhangadhi	Falling
Surkhet	No trend
Nepalgunj	Falling
Jumla	Rising
Dang	Falling
Pokhara	No trend
Bhairahawa	No trend
Simara	No trend
Kathmandu	No trend
Okhaldhunga	Falling
Taplejung	No trend
Dhankuta	No trend
Biratnagar	Falling
Jomsom	Falling
Dharan	No trend
Lumle	Falling
Janakpur	Falling
Jiri	Falling

Table 1



Fig: Map of Nepal showing the synoptic stations



-----XXXXXX-----