

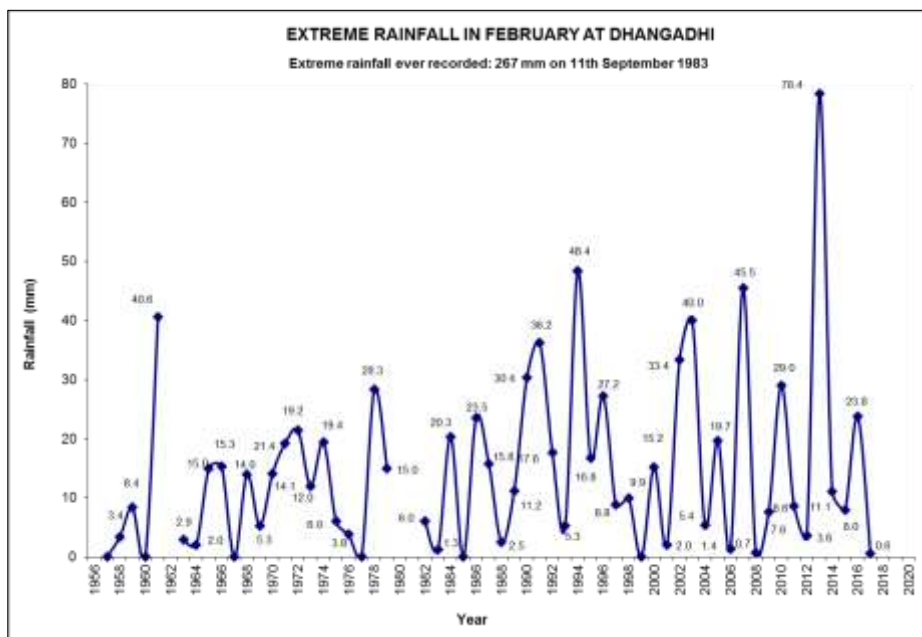
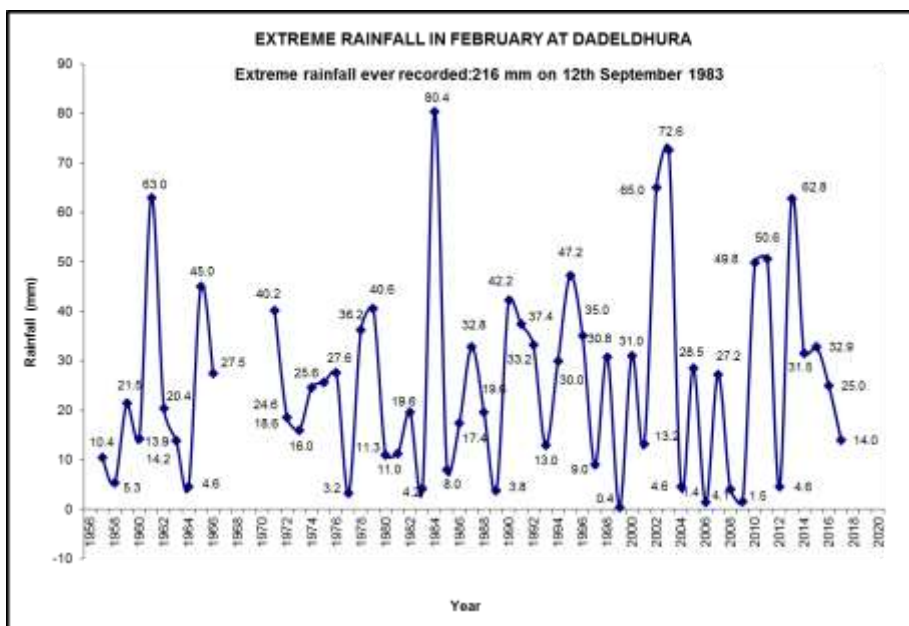


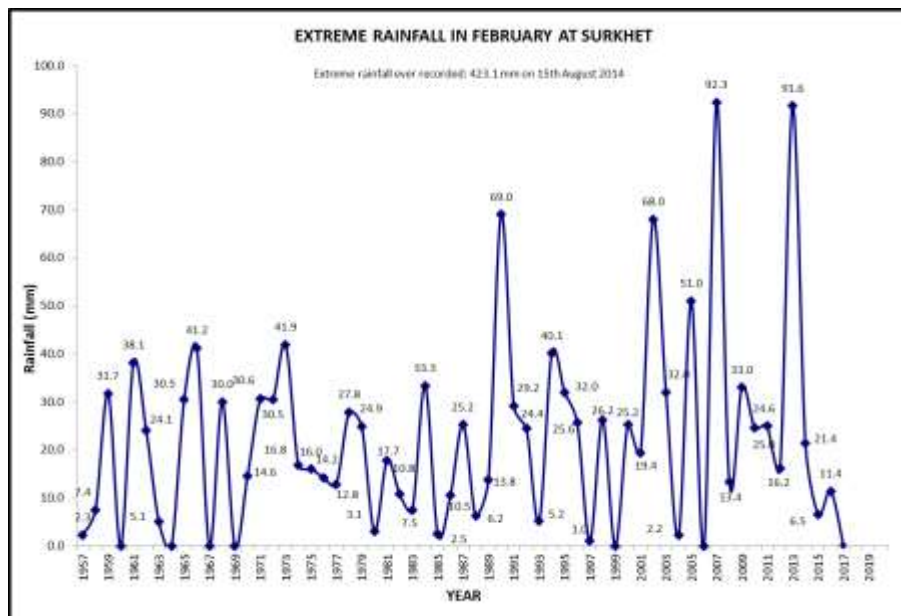
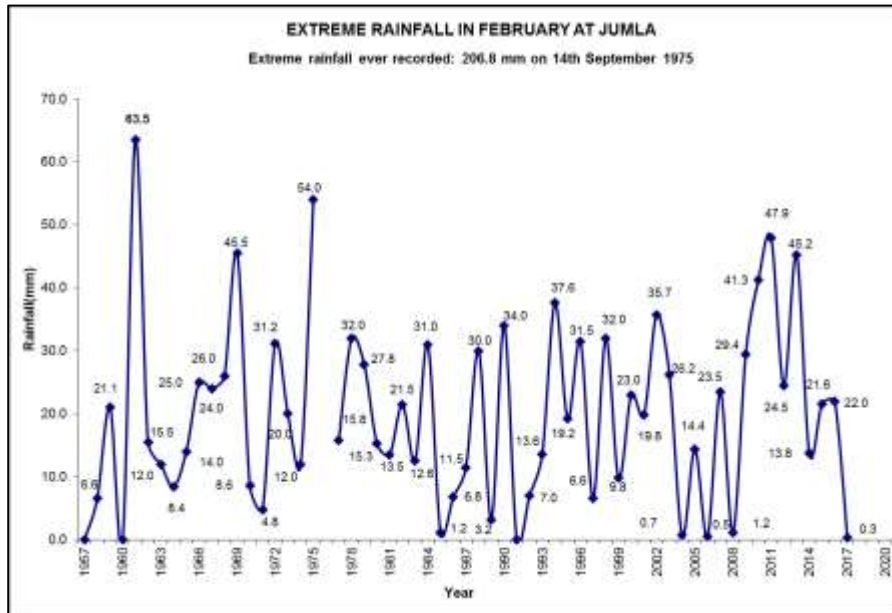
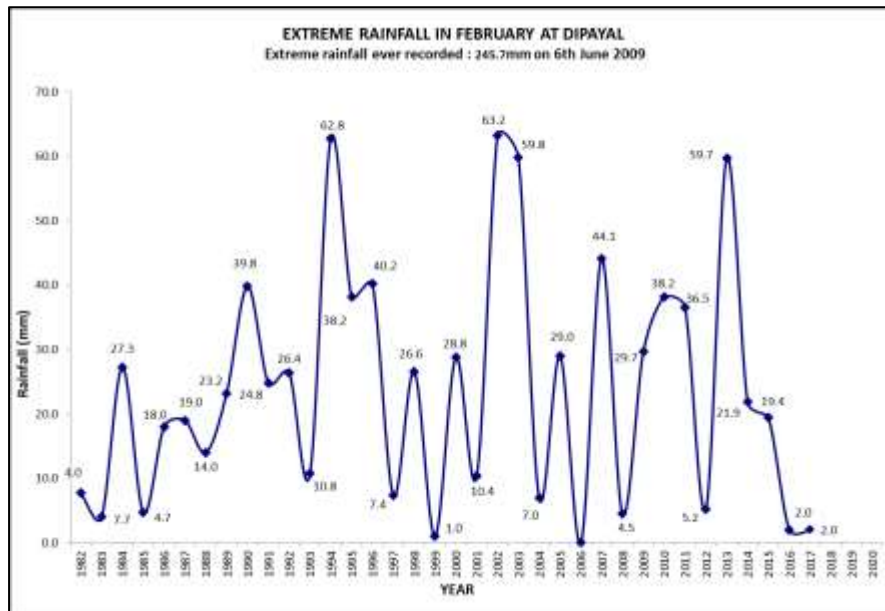
Government of Nepal

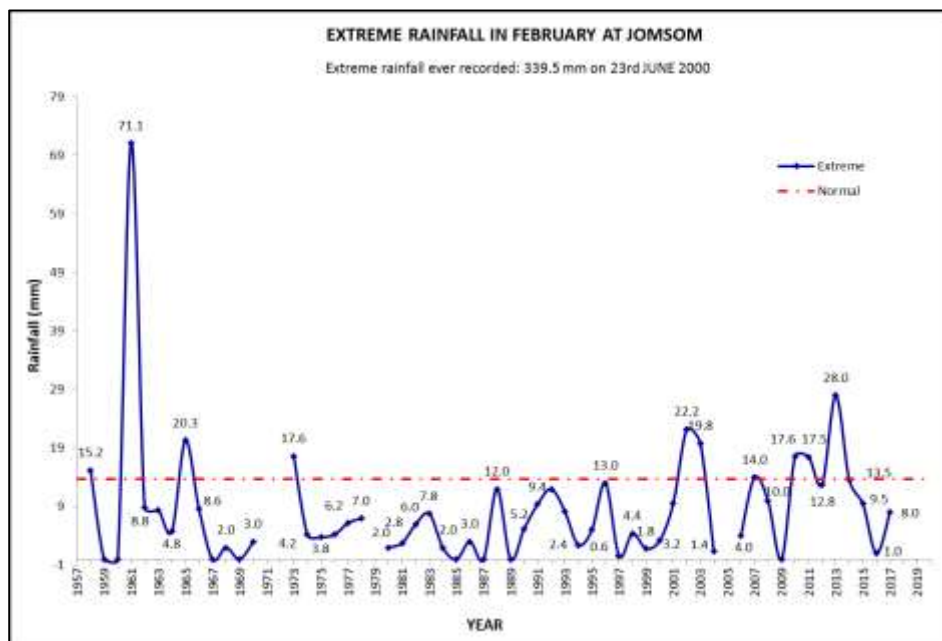
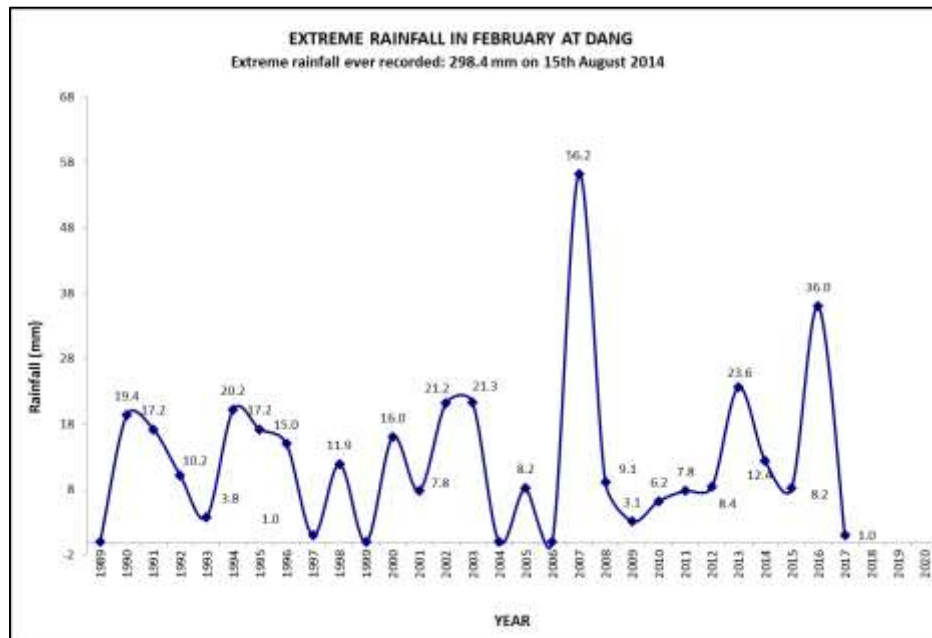
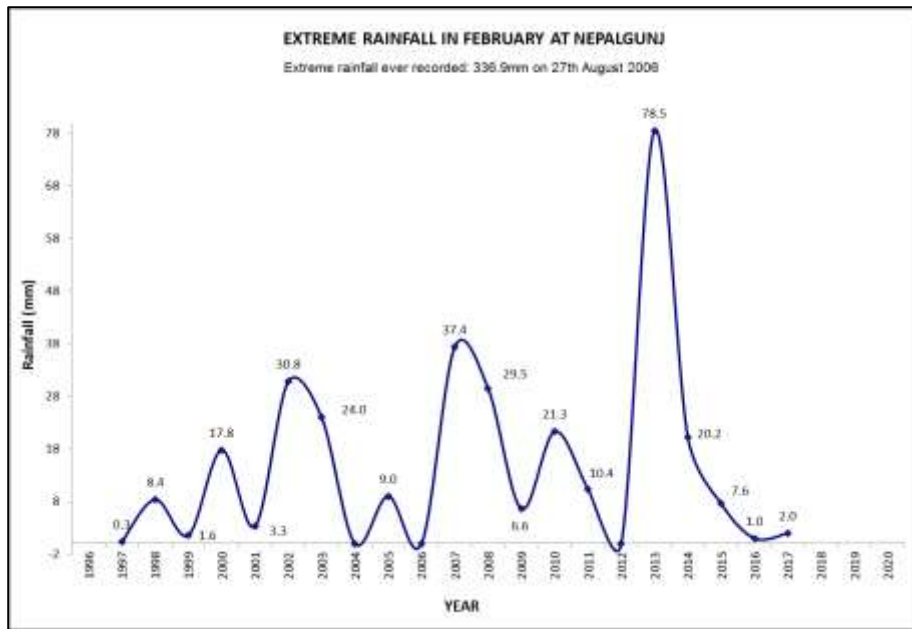
Government of Nepal
Ministry of Population and Environment
Department of Hydrology and Meteorology
Nagpokhari, Kathmandu, Nepal.

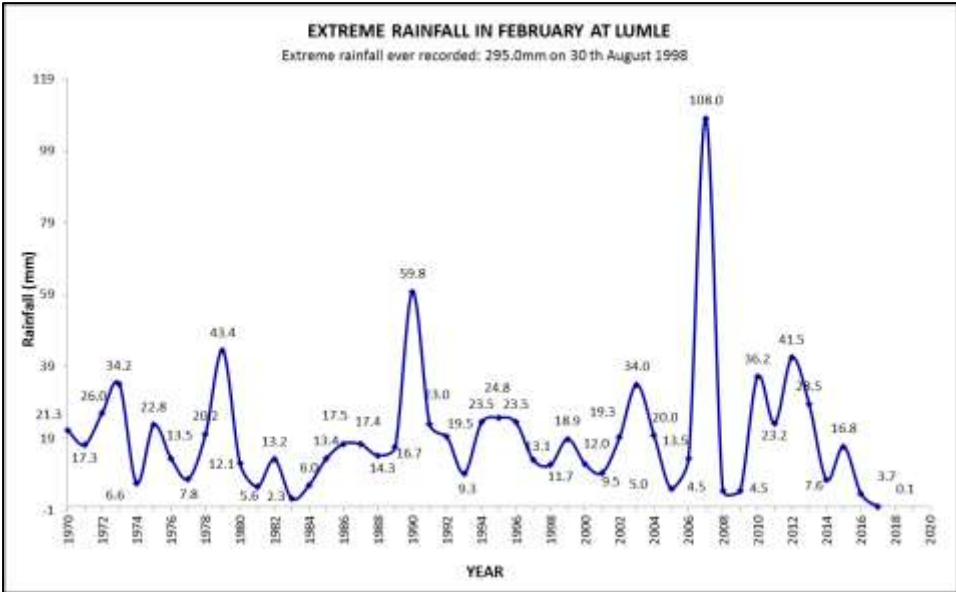
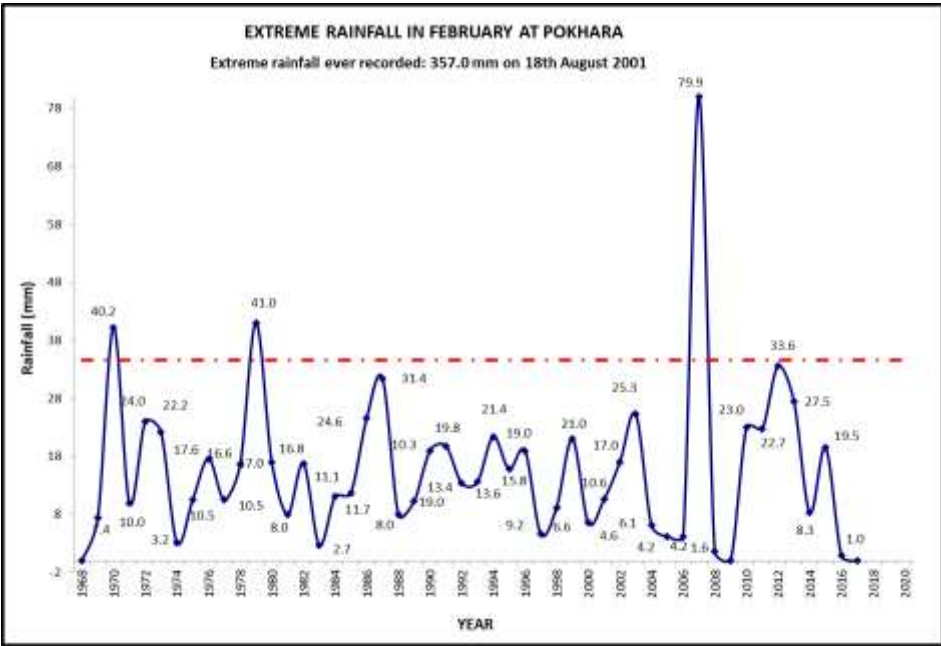
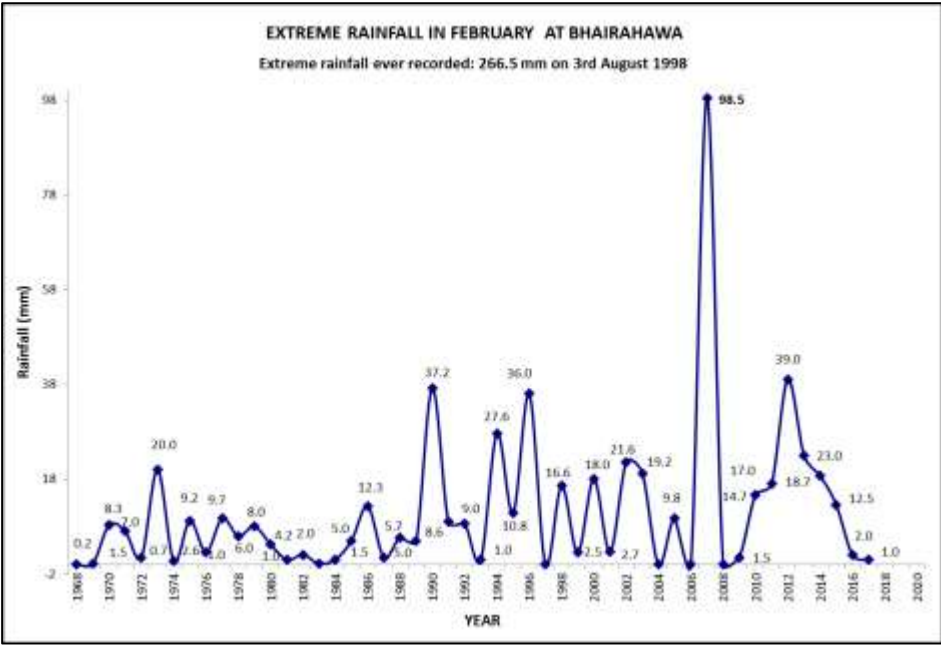
EXTREME RAINFALL OF MONTH FEBRUARY

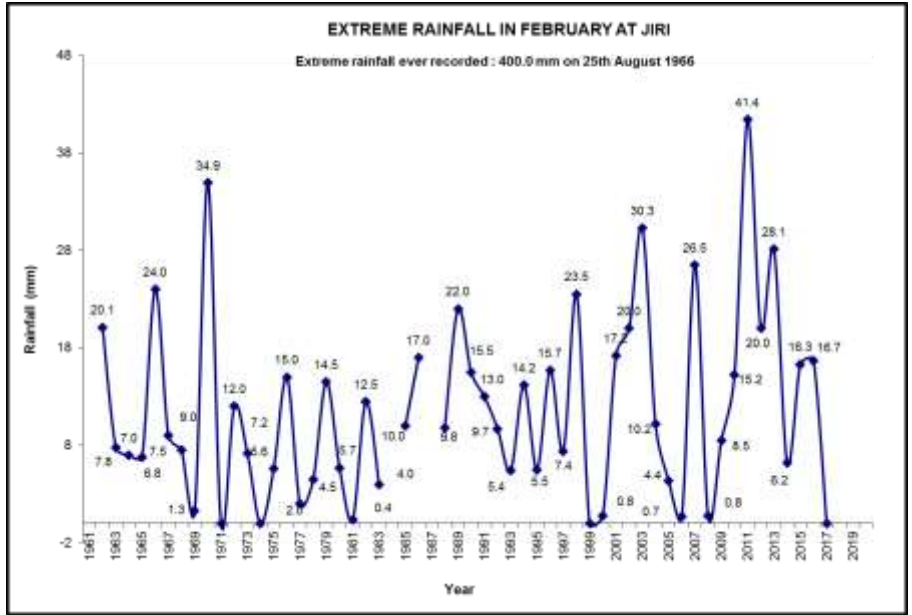
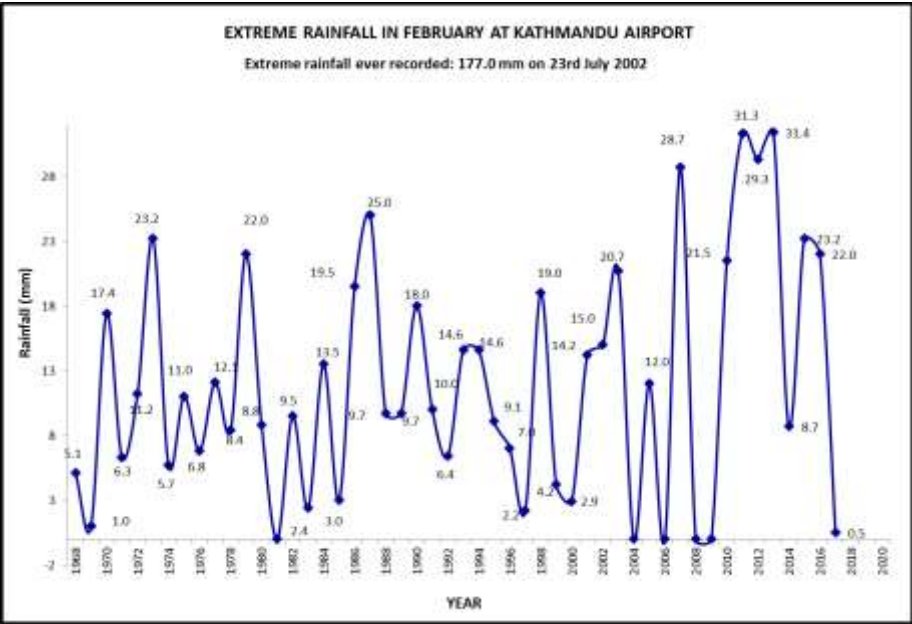
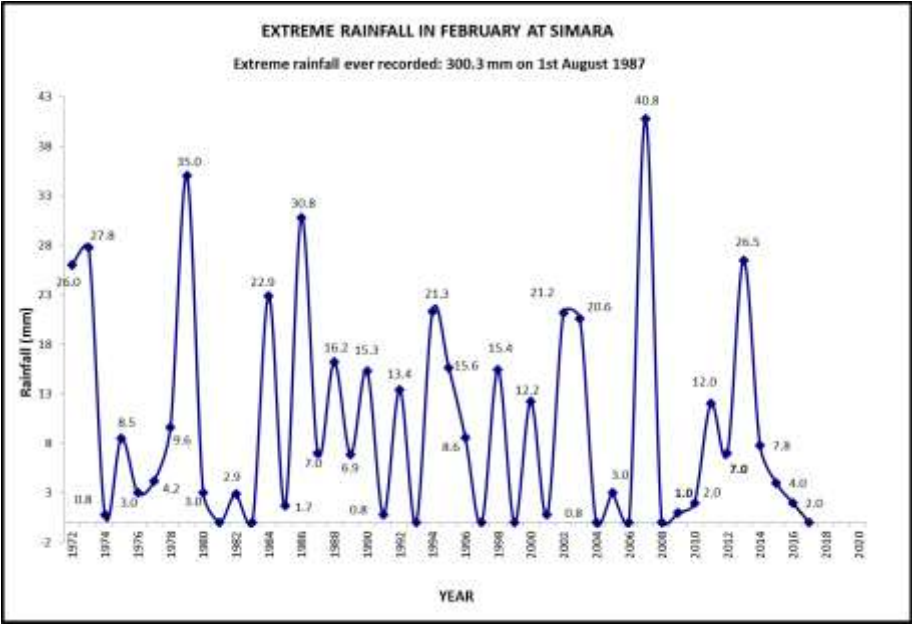
Note: The Precipitation extremes are usually recorded in Nepal during the monsoon months (June-September) especially in the month of July & August and only in some cases the extremes are recorded in the other months. The stations selected in this monitoring shows the maximum rain recorded in the February month in the station at Lumle in the Mid-western region of Nepal of 108.0mm on 14th February 2007. Table 1 shows the rainfall trend in the stations listed below.

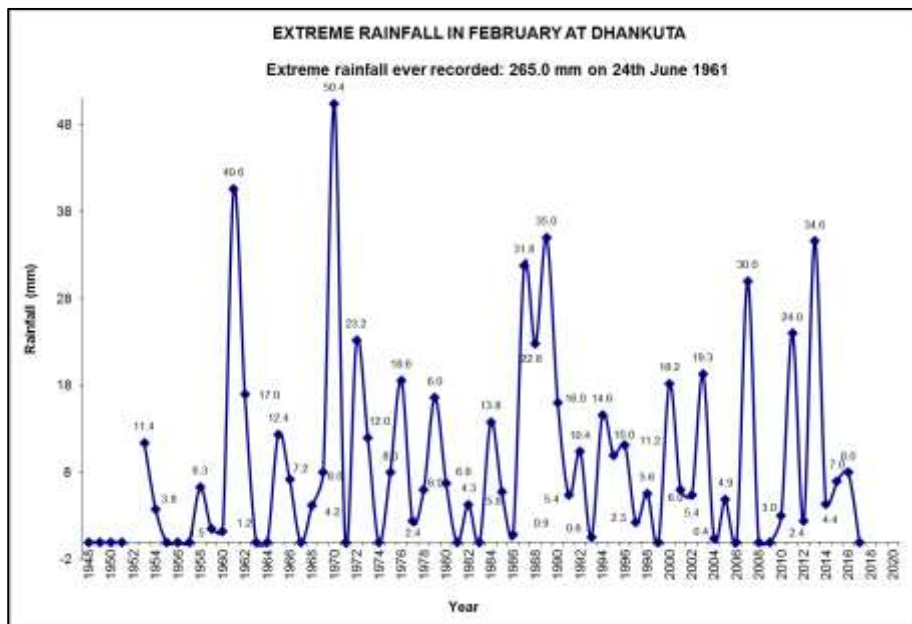
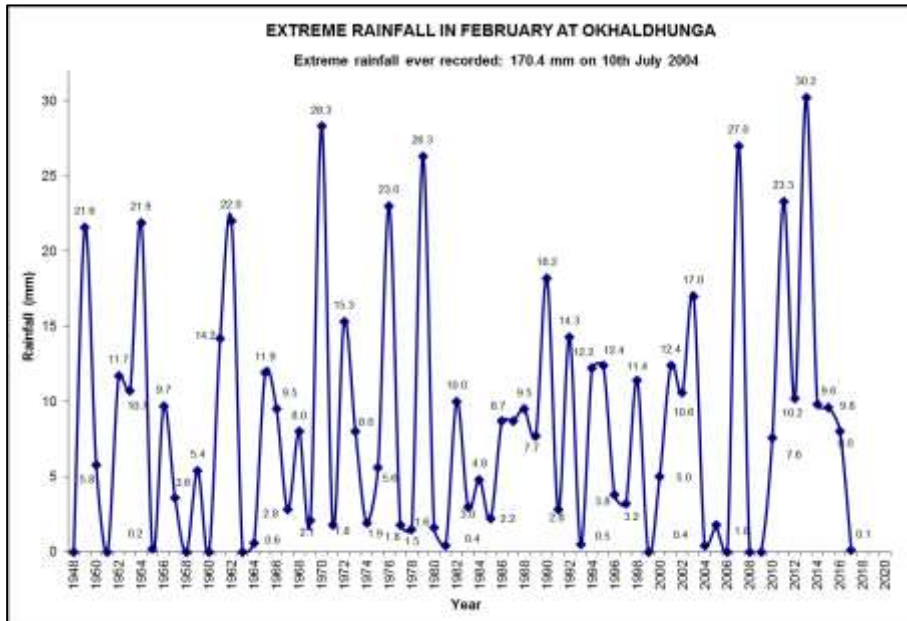
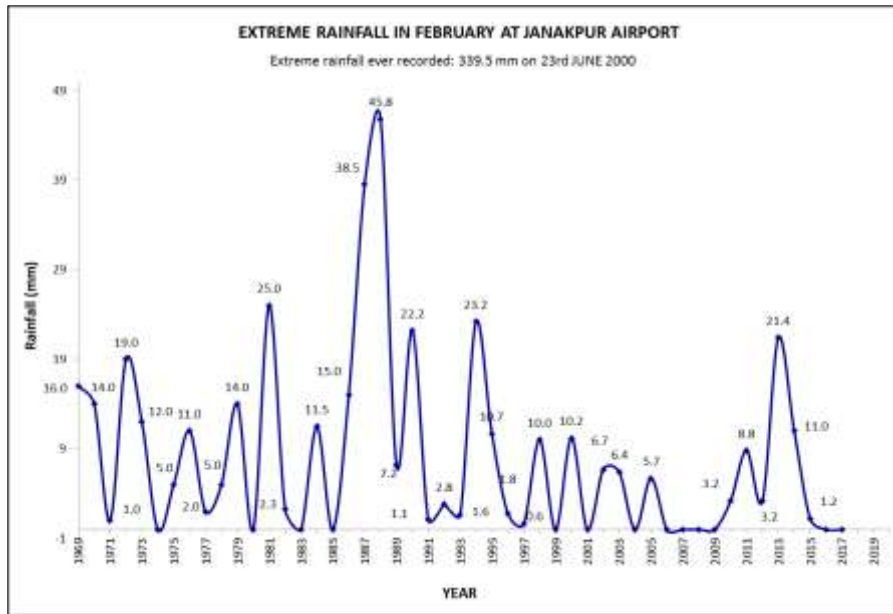












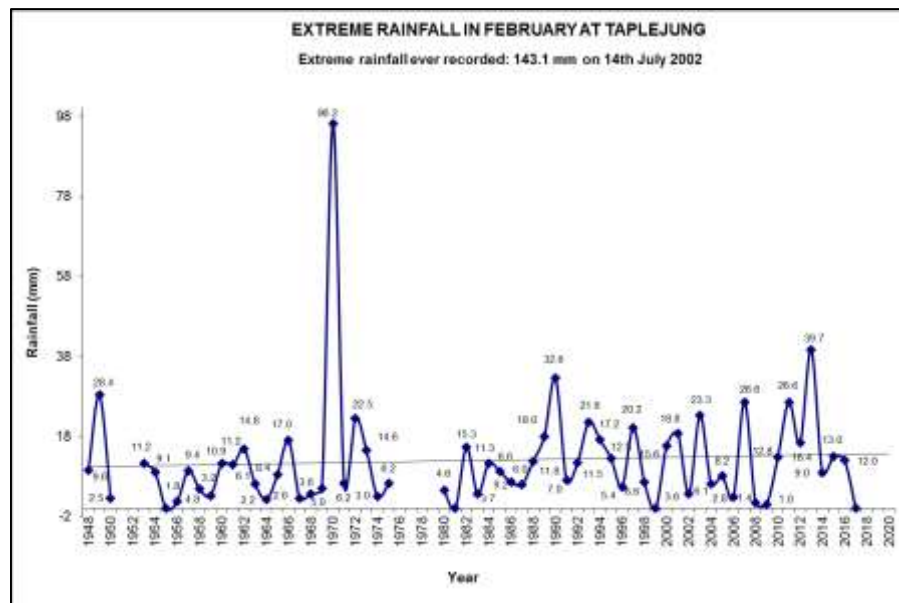
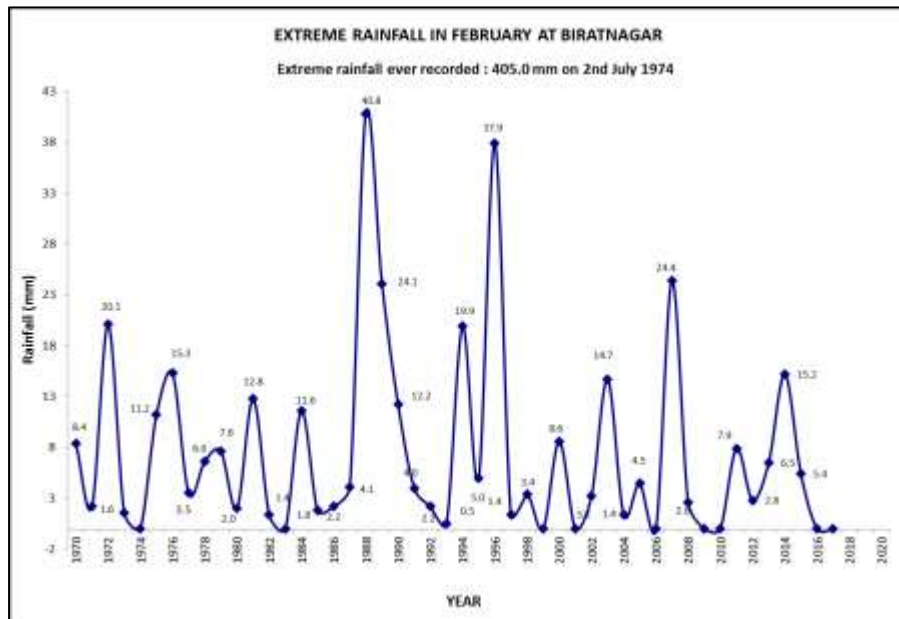
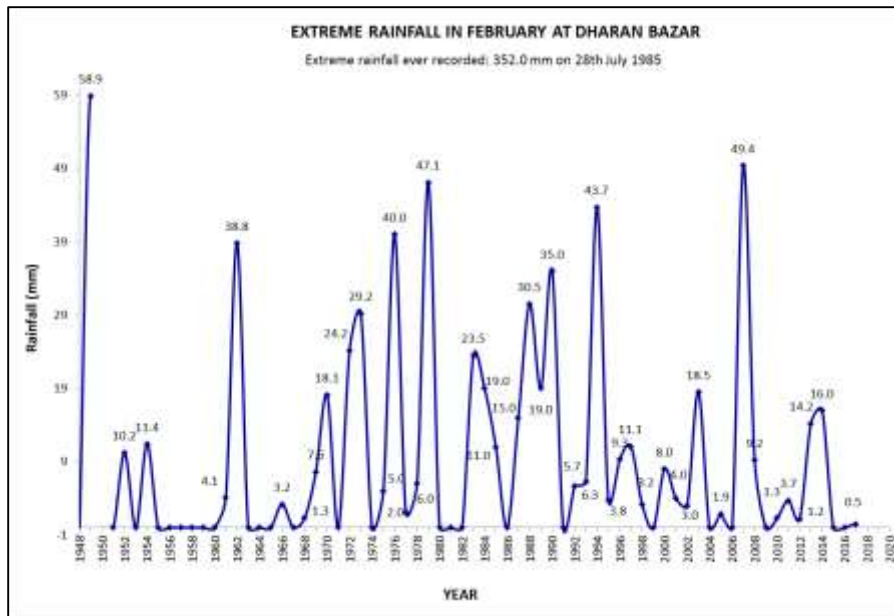
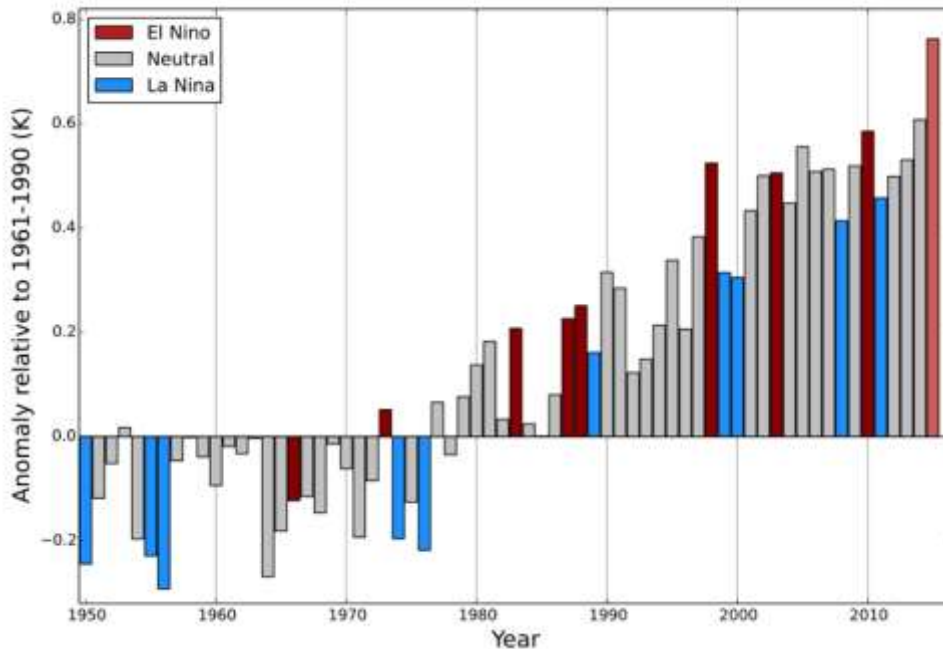


Table 1

Extreme Rainfall trends			
Stations/Month	February	Stations/Month	February
Dadeldhura	Rising	Kathmandu	Rising
Dipayal	Falling	Okhaldhunga	Rising
Dhangadhi	Rising	Taplejung	No trend
Surkhet	Rising	Dhankuta	Rising
Nepalgunj	Rising	Biratnagar	Falling
Jumla	Rising	Jomsom	No trend
Dang	Rising	Dharan	Falling
Pokhara	No trend	Lumle	Rising
Bhairahawa	Rising	Janakpur	Falling
Simara	Falling	Jiri	Rising



-----XXXXXX-----