



Government of Nepal  
Ministry of Energy, Water Resources and Irrigation  
Department of Hydrology and Meteorology  
Nagpokhari, Kathmandu, Nepal.

### Kathmandu Valley Monsoon Monitoring 2018

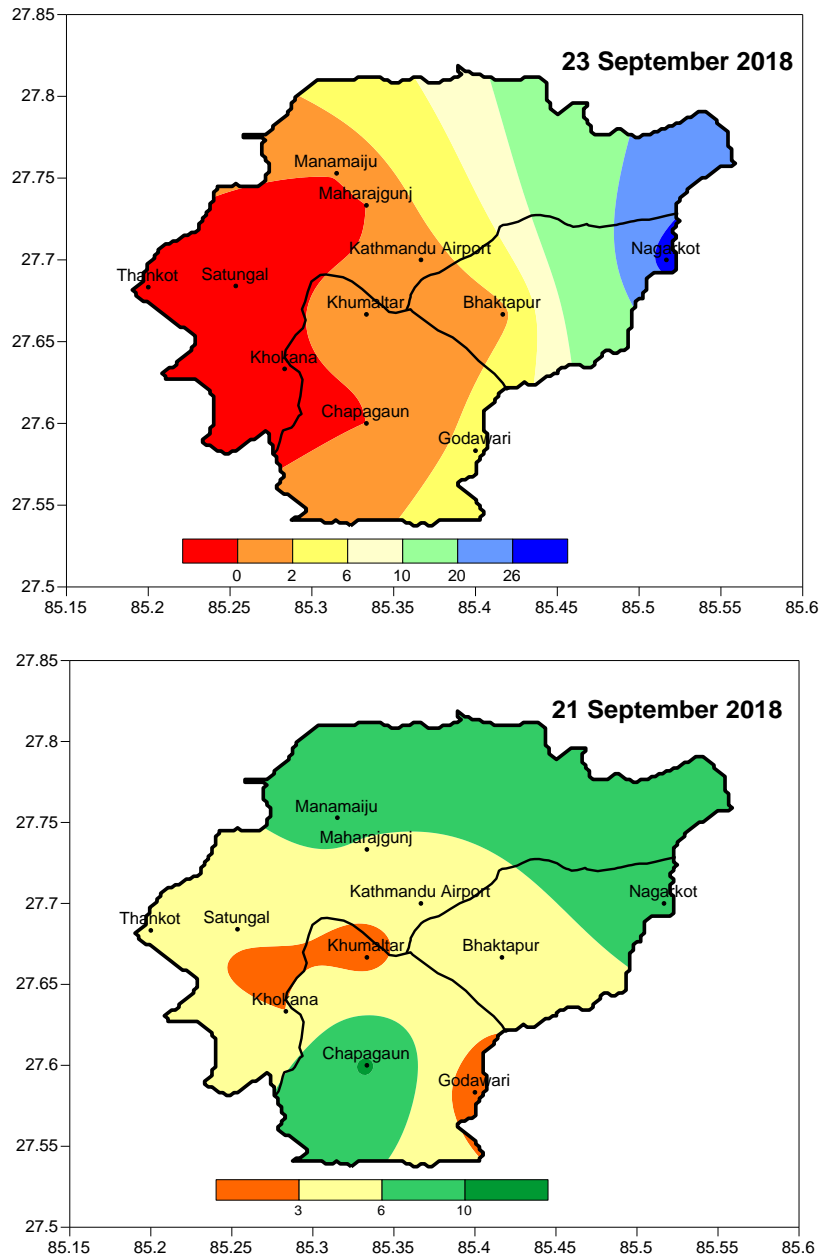


Fig: Rainfall (mm) over various stations in the Kathmandu Valley

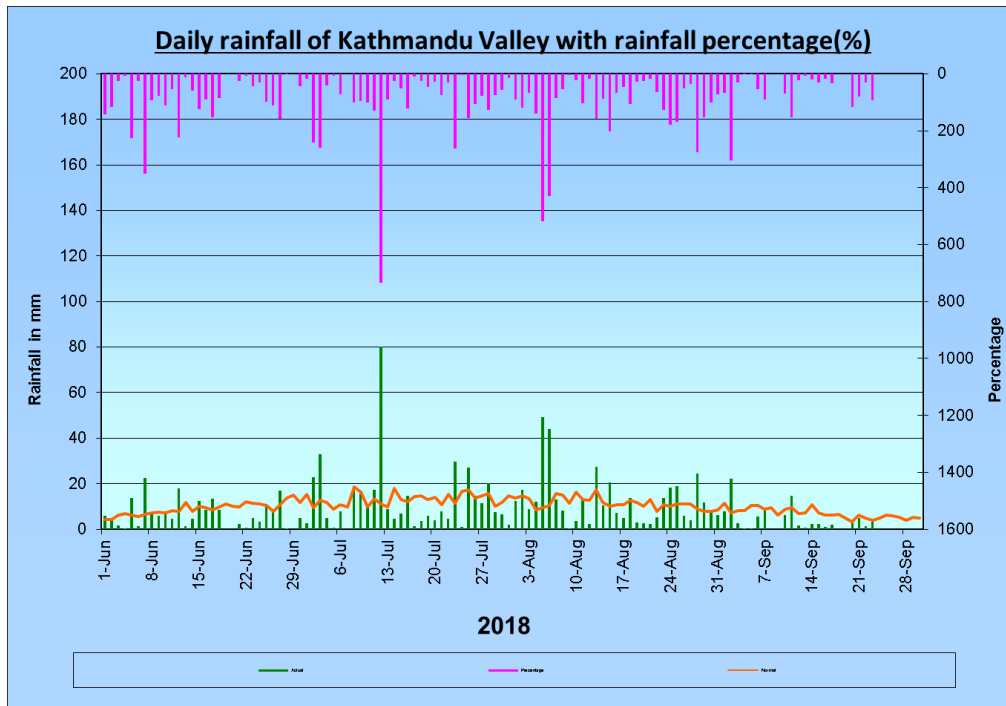


Fig: Chart of Rainfall with percentage of Rainfall

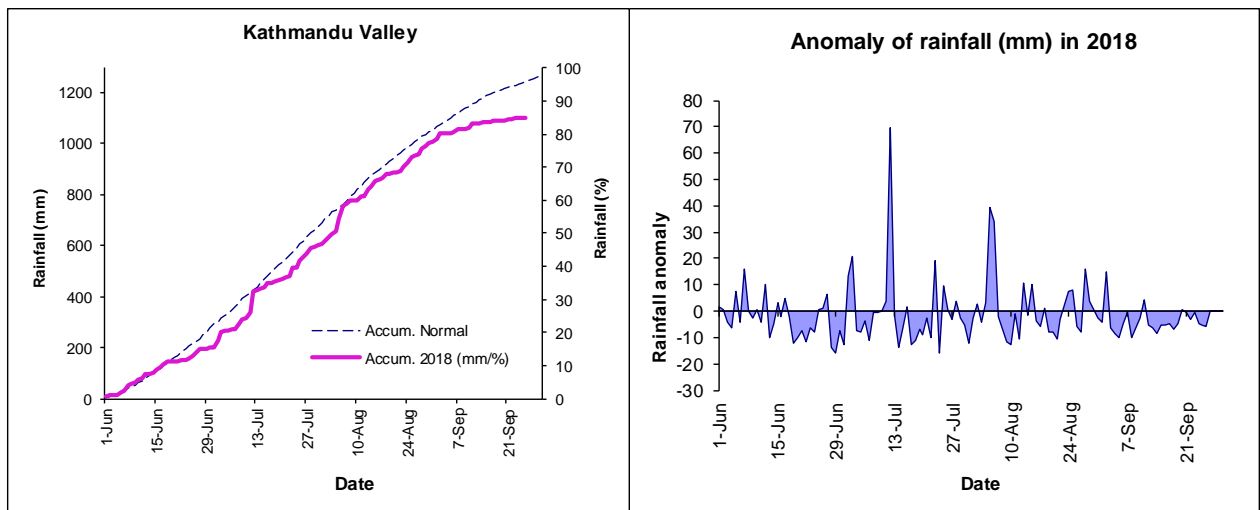


Fig:-Accumulated and anomaly of rain in Kathmandu with normal