

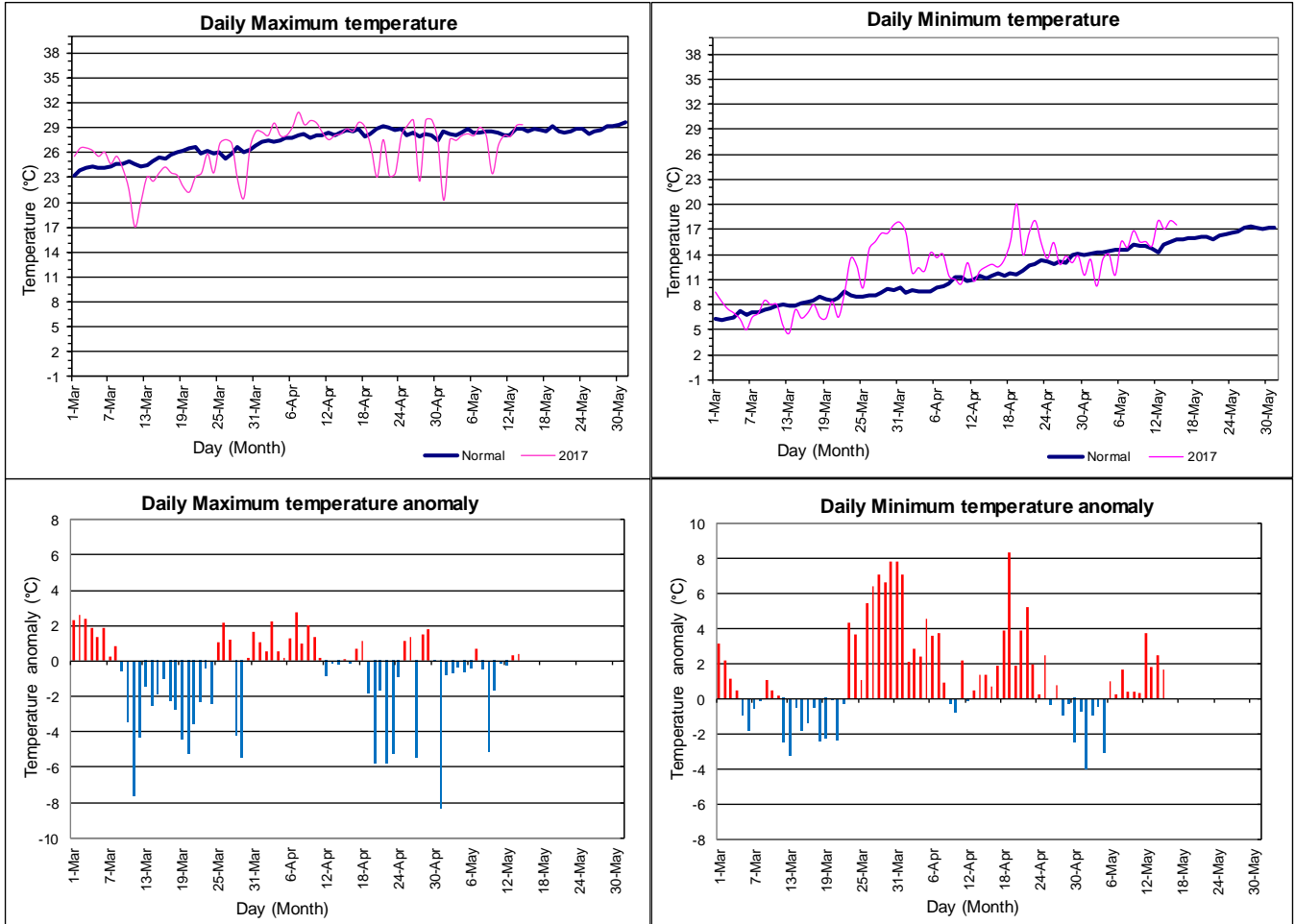


Government of Nepal
 Ministry of Population and Environment
 Department of Hydrology and Meteorology
 Nagpokhari, Kathmandu, Nepal.

Government of Nepal

PRE-MONSOON (March-May) (2017)

Daily Temperature Monitoring at Kathmandu Airport (Pre-monsoon)

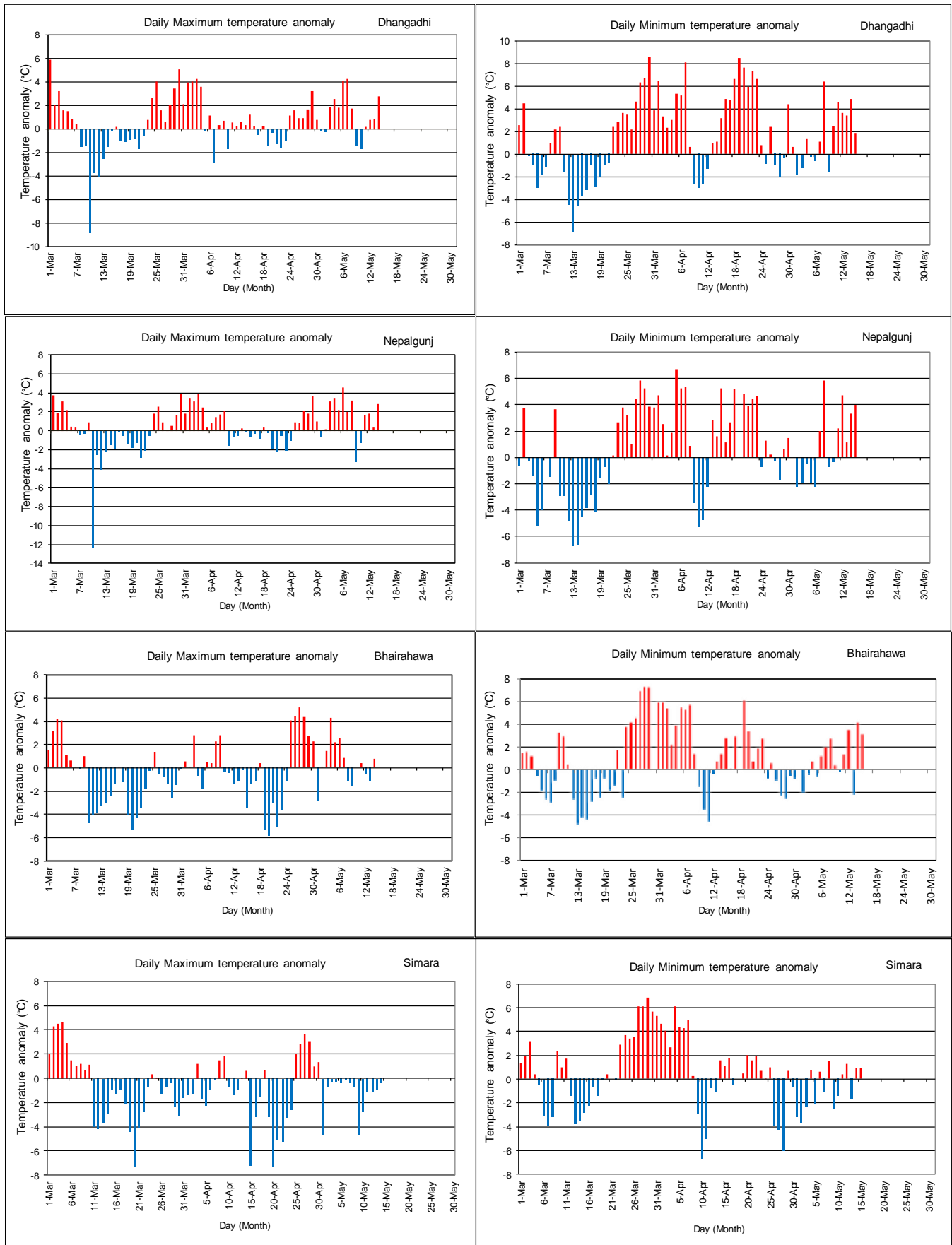


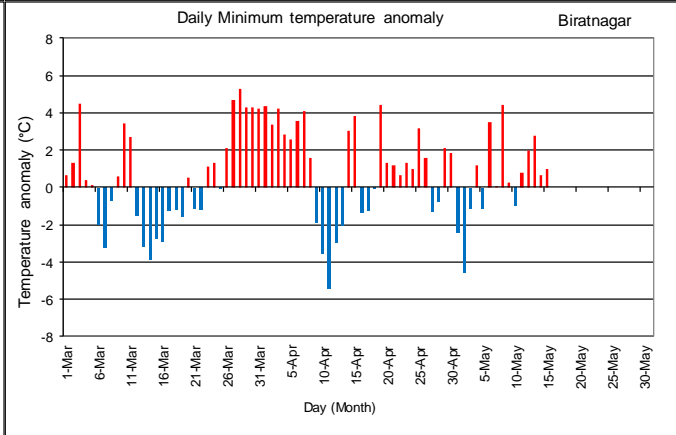
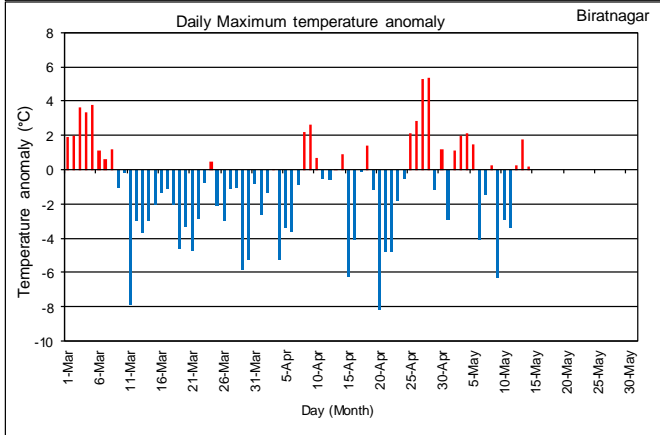
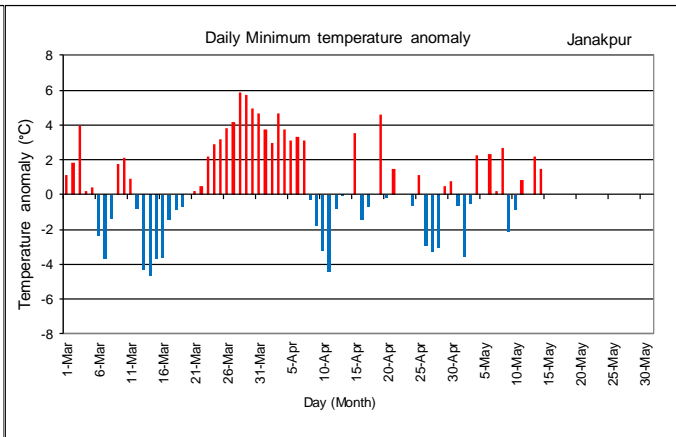
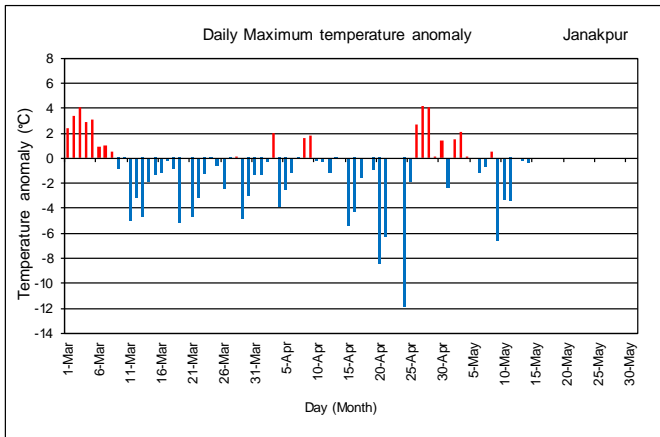
Note: Pre-monsoon is the season of high speed wind with a sudden development of local convection and rain with thunder and showers accompanied by chances of hail. The afternoon is the probable time of convection and precipitation showers. The good citizen thus must be travelling with an umbrella as the cool showers may welcome the weather any time after the noon. The temperature in the daytime thus is maintained to normal by the rain to make the weather pleasant. Due to possibility of windy atmosphere, it is requested to keep off (turn off) the fire completely wherever it is kept on in the open air to avoid the further advancement of fire turning to disaster especially in the place like forest or bushes (e.g. picnic spots).

-DHM



Temperature Monitoring in Terai Region (Pre-monsoon)





Daily Monitoring 2017

