

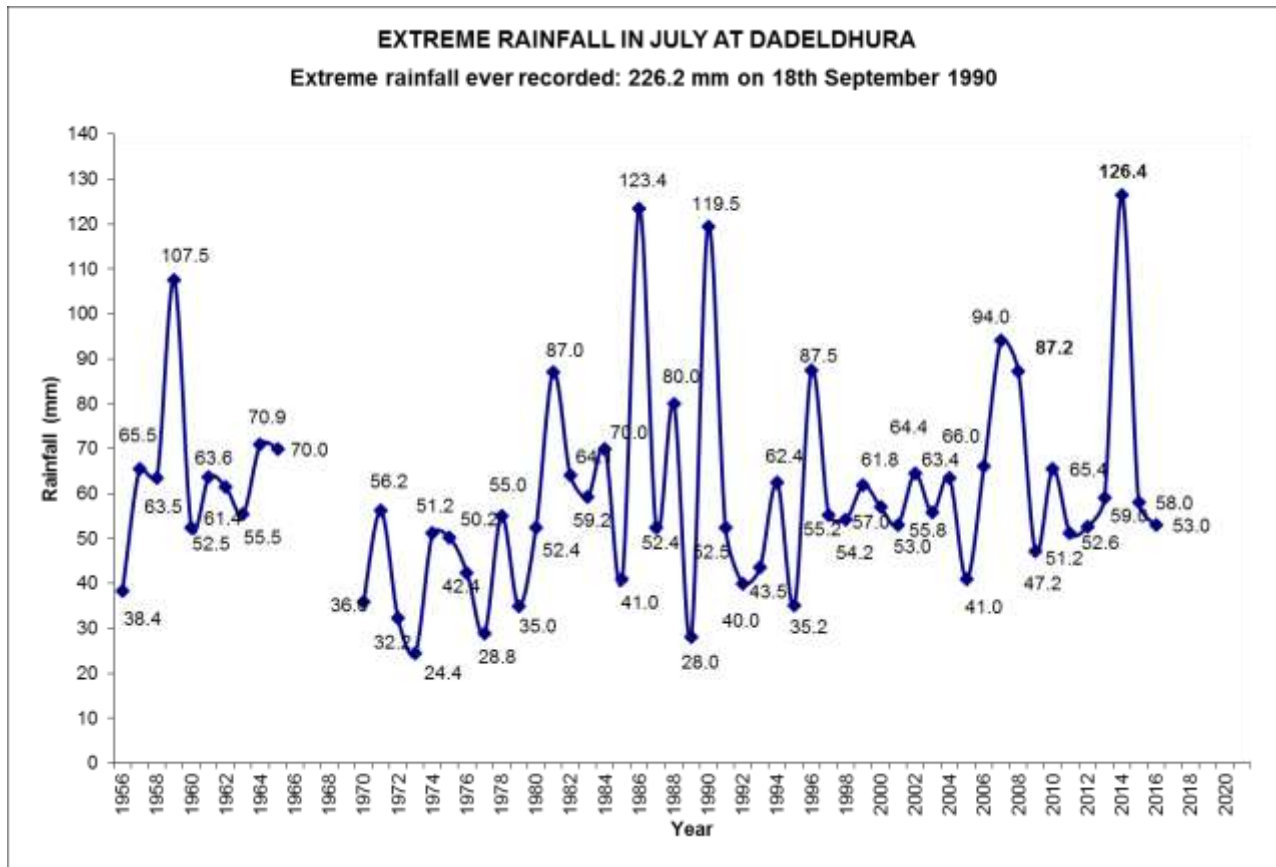


Government of Nepal

Government of Nepal
Ministry of Population and Environment
Department of Hydrology and Meteorology
Naxal, Kathmandu, Nepal.

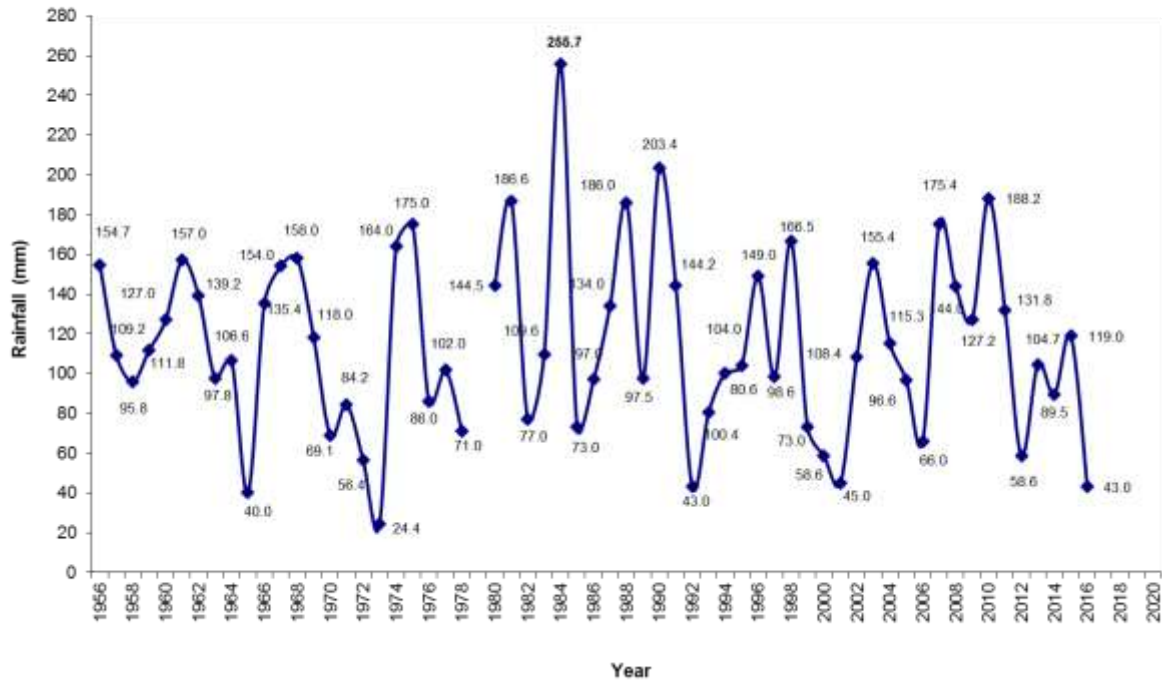
EXTREME RAINFALL OF MONTH JULY
AT SELECTED STATIONS

Note: July is one of the wettest month in the year. So the precipitation extremes are recorded in this month a lot. The stations selected in this monitoring shows the daily maximum rain recorded in July in the station at Lumle in the Mid-Western region of Nepal of 288.7 mm on 30th July 2015. This year July has the highest 24hr rainfall is in Pokhara with 223.0 mm and lowest with 30.5 mm in Jomsom. The noticeable high rainfall in the extreme rainfall in July can be observed in most of the cases in the years 1959, 1963, 1979, 1986, 1990, 1999, 2002 and 2014. The trend of July rainfall shows decreasing trend in Dhangadhi, Surkhet, Simara, and rising trend in Dadeldhura, Nepaljung, Dang, Bhairahawa, Pokhara, Lumle, Taplejung and no trend in the station Dhangadhi. In most of the cases there is rising trend from 1990s whereas in Simara the trend is falling from 1990s onwards.



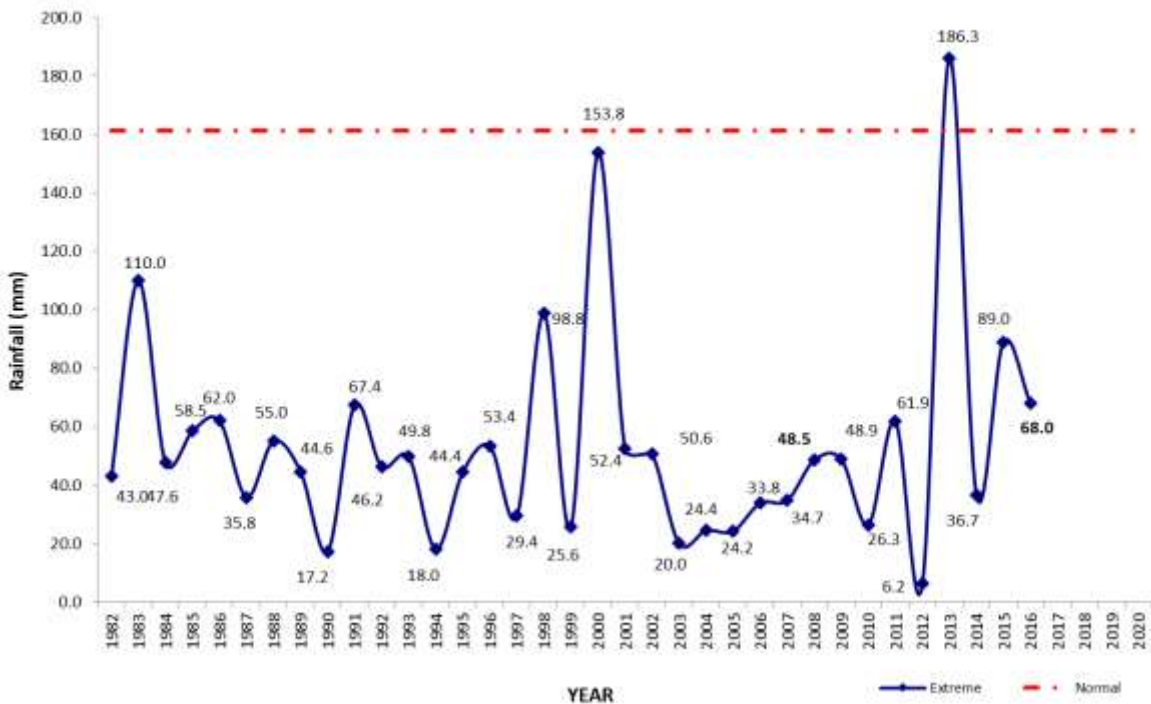
EXTREME RAINFALL IN JULY AT DHANGADHI

Extreme rainfall ever recorded: 267 mm on 11th September 1983

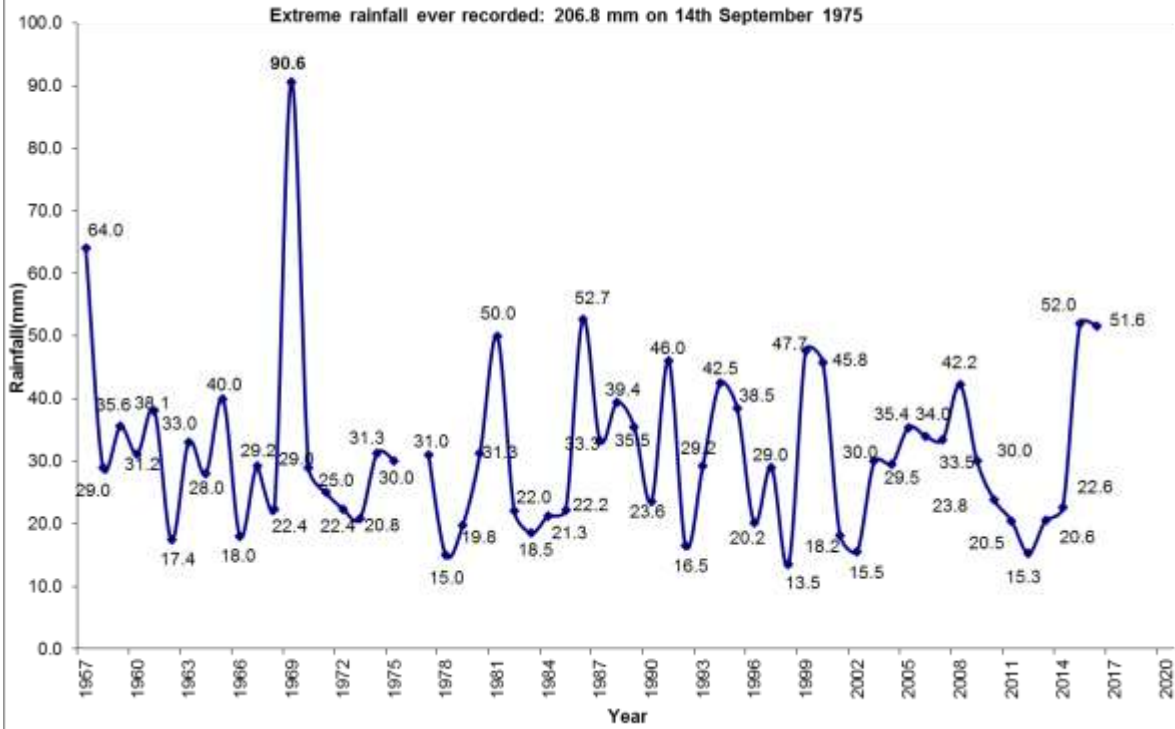


EXTREME RAINFALL IN JUNE AT DIPAYAL

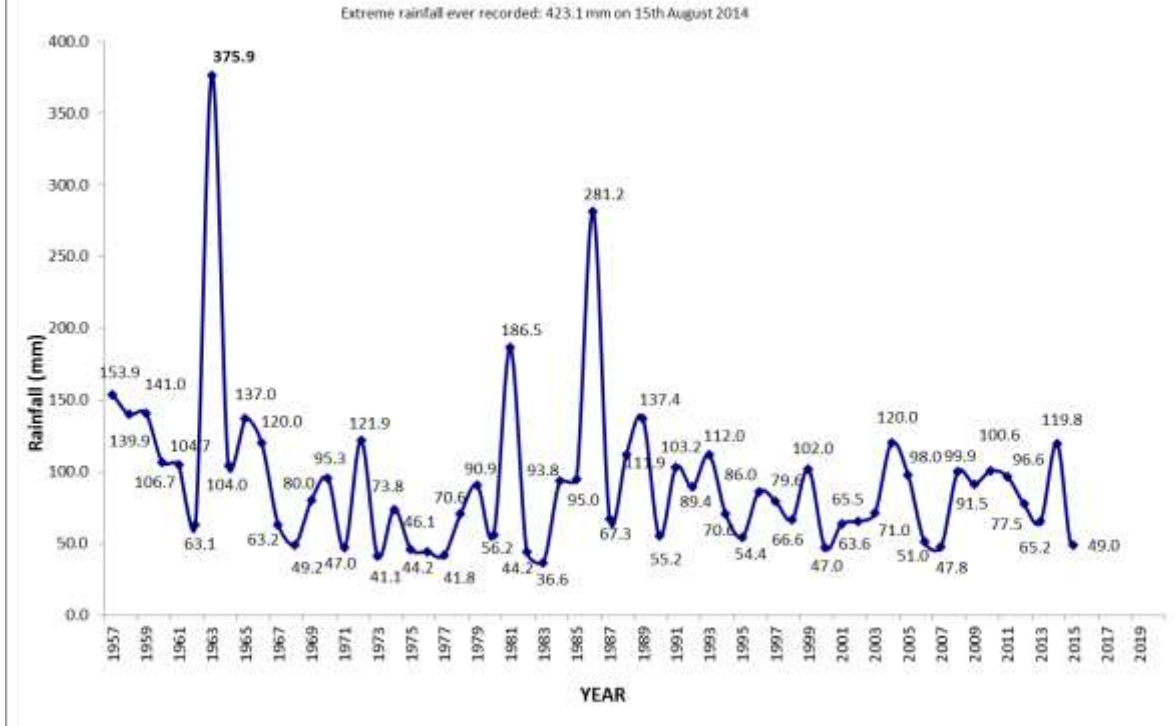
Extreme rainfall ever recorded: 186.3 mm on 18th June

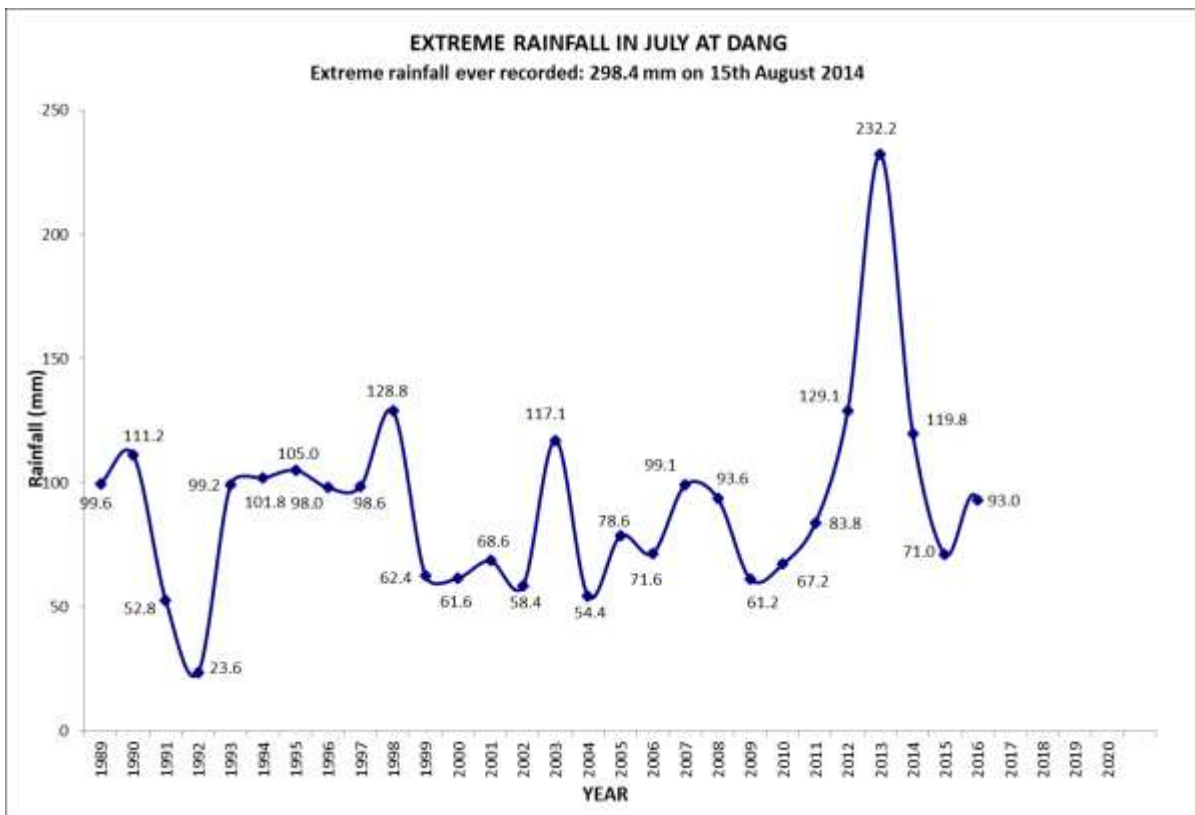
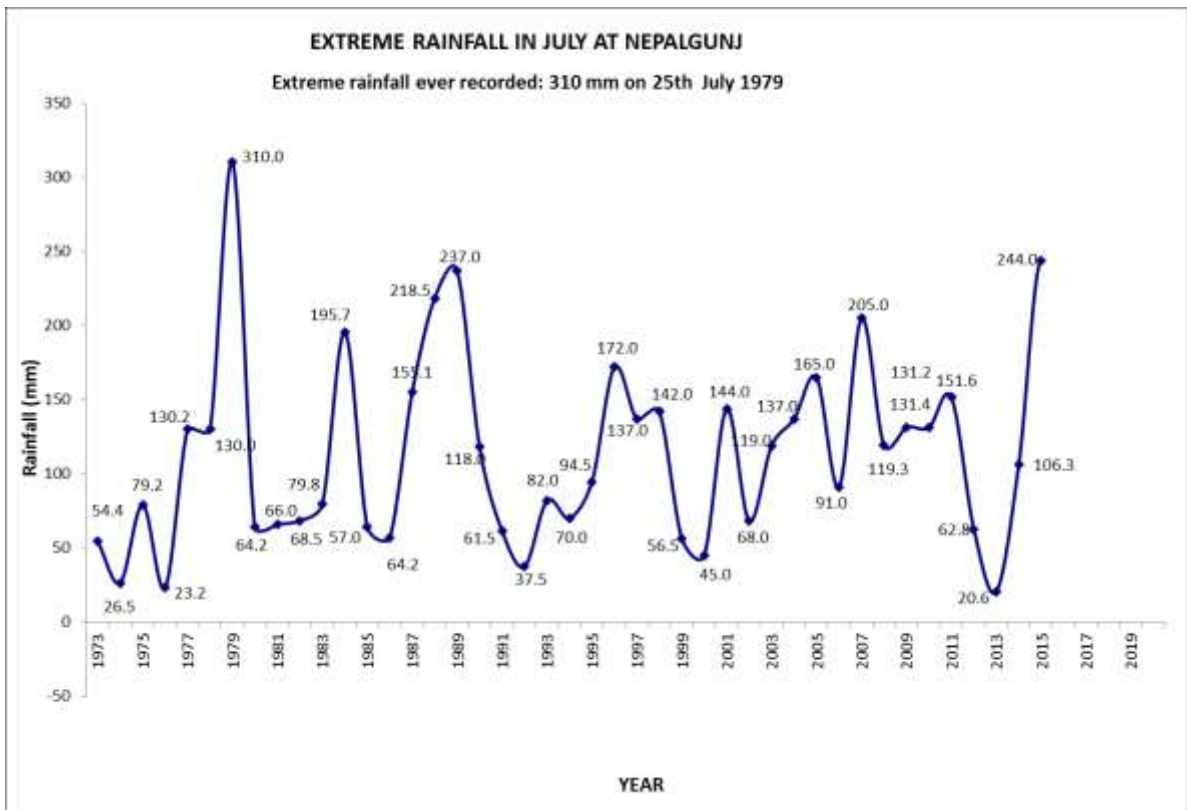


EXTREME RAINFALL IN JULY AT JUMLA



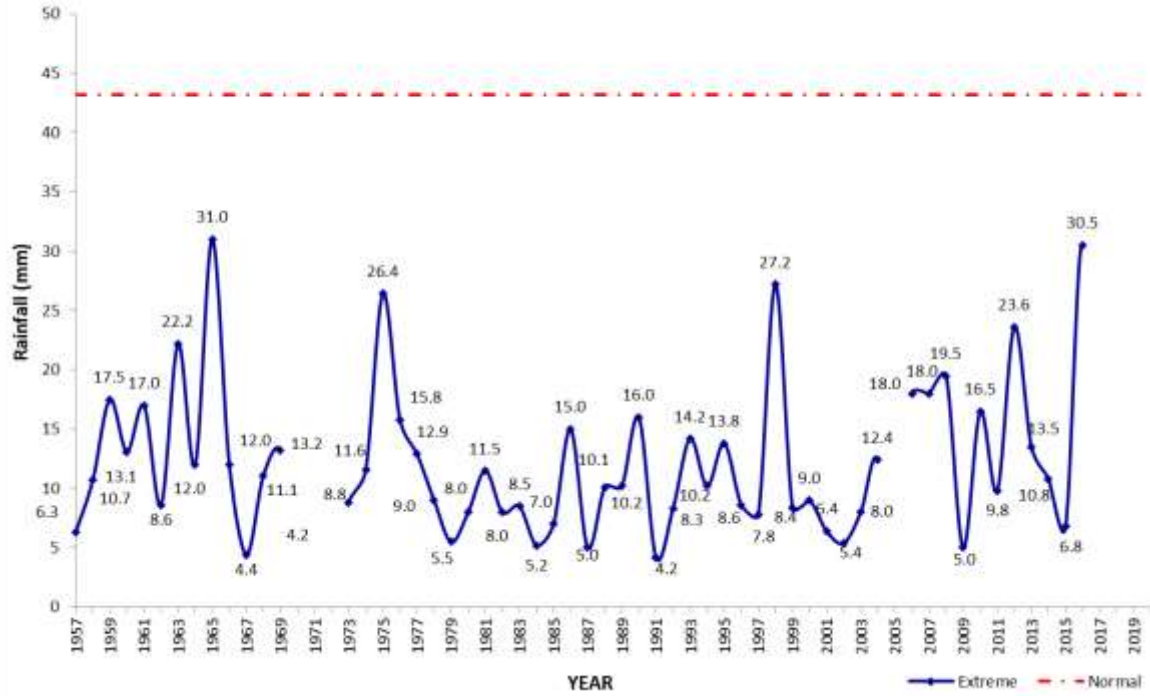
EXTREME RAINFALL IN JULY AT SURKHET





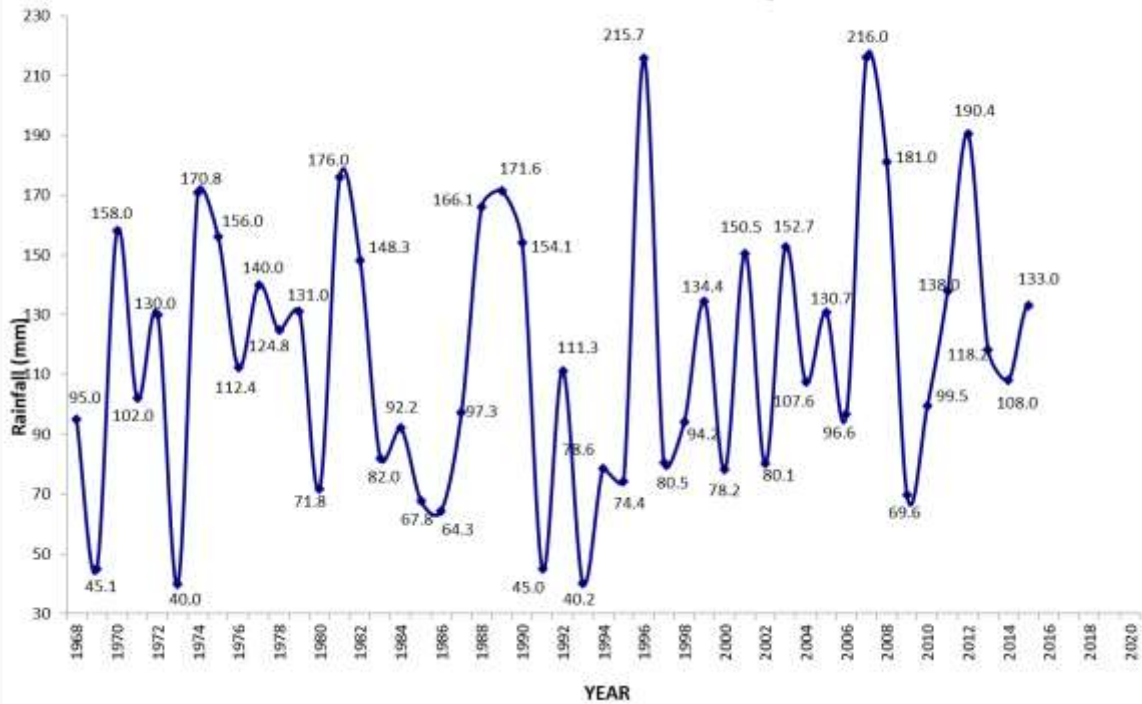
EXTREME RAINFALL IN JULY AT JOMSOM

Extreme rainfall ever recorded: 339.5 mm on 23rd JUNE 2000



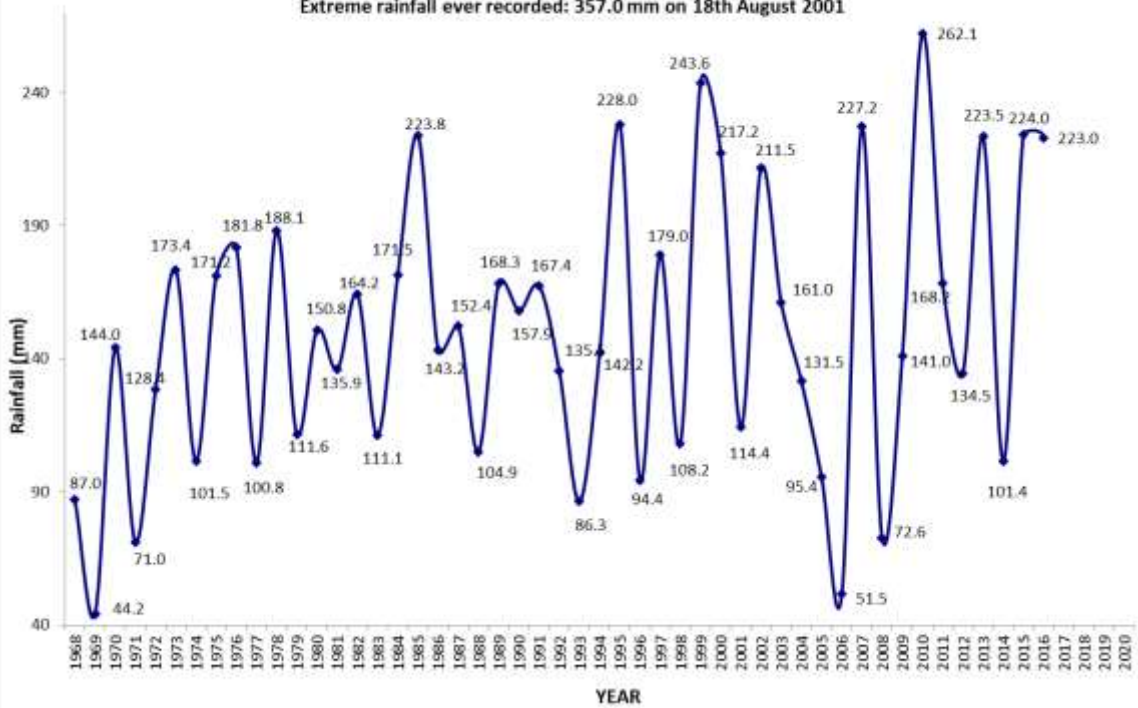
EXTREME RAINFALL IN JULY AT BHAIRAHAWA

Extreme rainfall ever recorded: 266.5 mm on 3rd August 1998



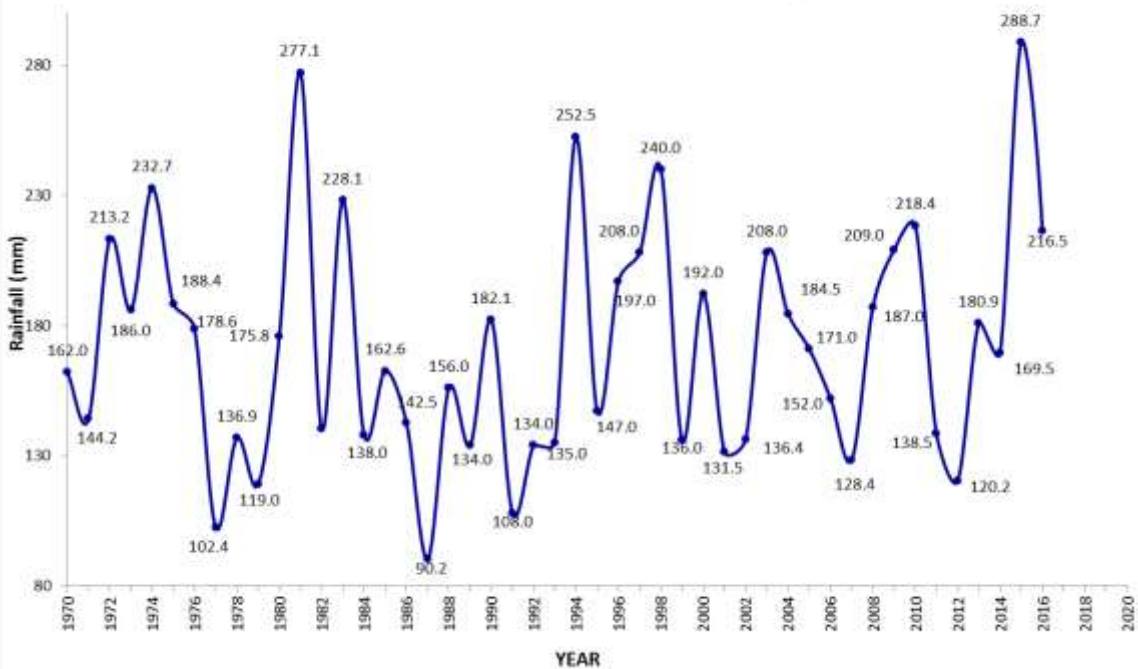
EXTREME RAINFALL IN JULY AT POKHARA

Extreme rainfall ever recorded: 357.0 mm on 18th August 2001



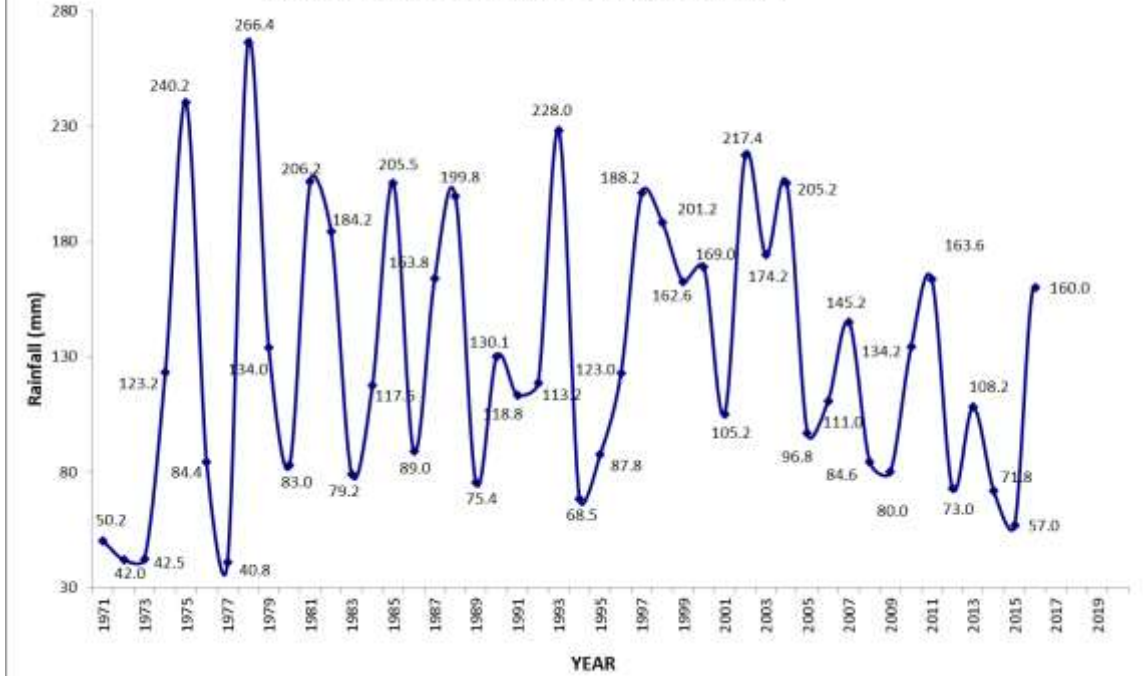
EXTREME RAINFALL IN JULY AT LUMLE

Extreme rainfall ever recorded: 295.0mm on 30th August 1998



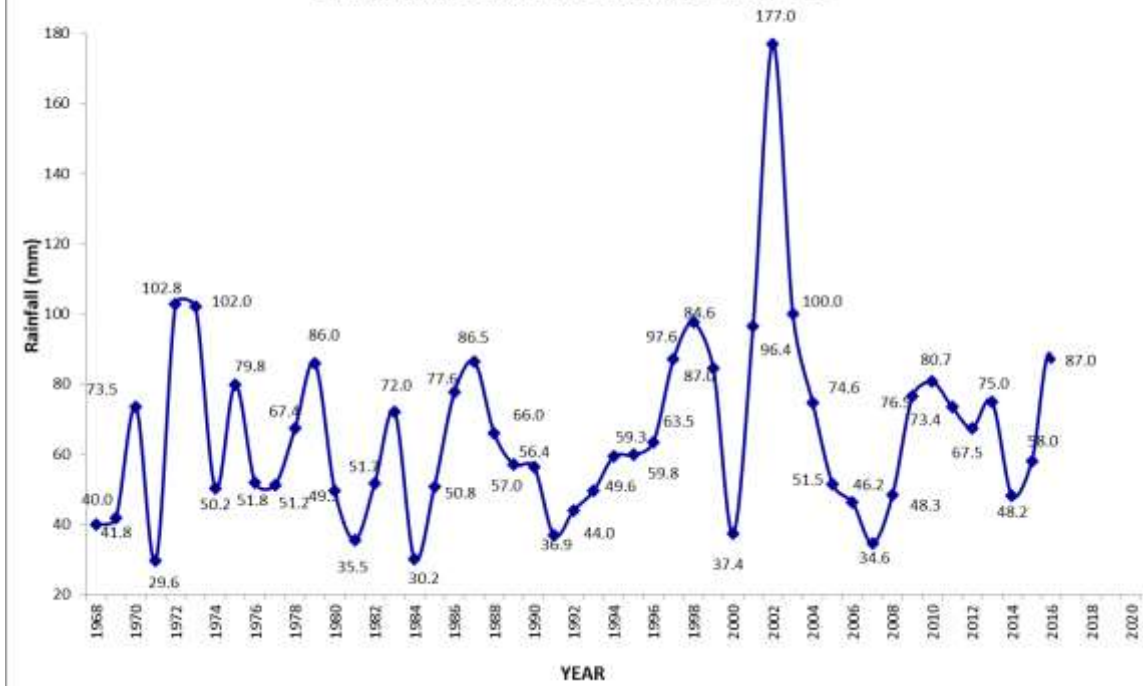
EXTREME RAINFALL IN JULY AT SIMARA

Extreme rainfall ever recorded: 300.3 mm on 1st August 1987



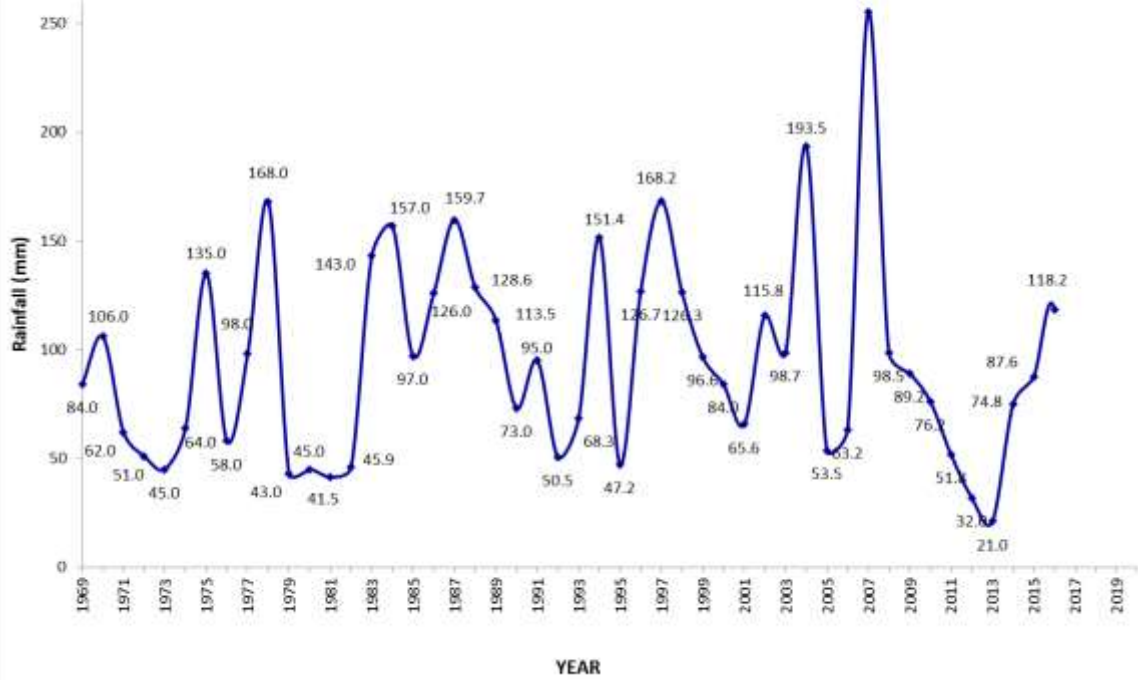
EXTREME RAINFALL IN JULY AT KATHMANDU AIRPORT

Extreme rainfall ever recorded: 177.0 mm on 23rd July 2002



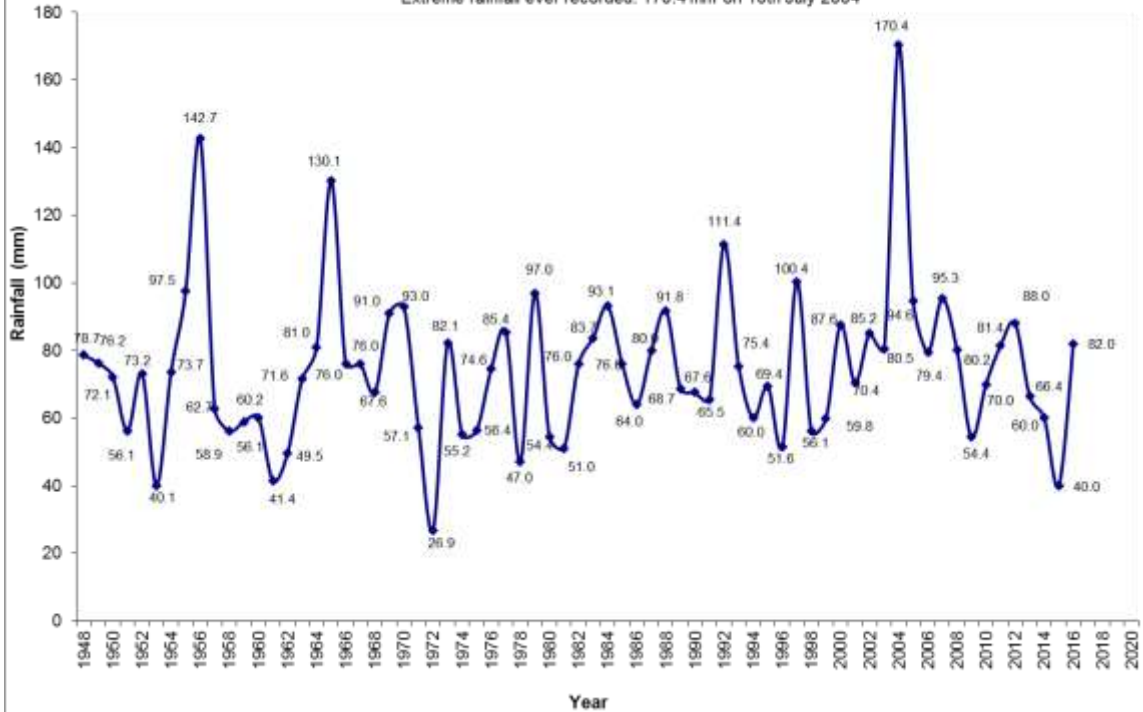
EXTREME RAINFALL IN JULY AT JANAKPUR AIRPORT

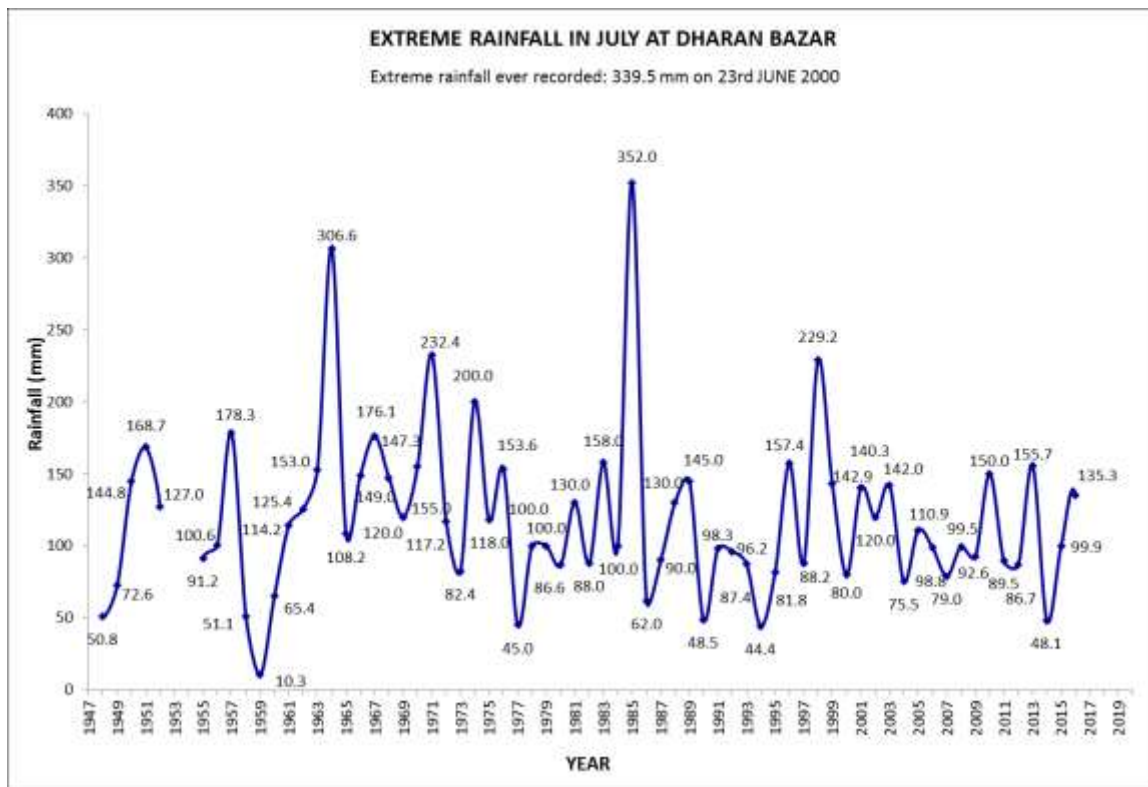
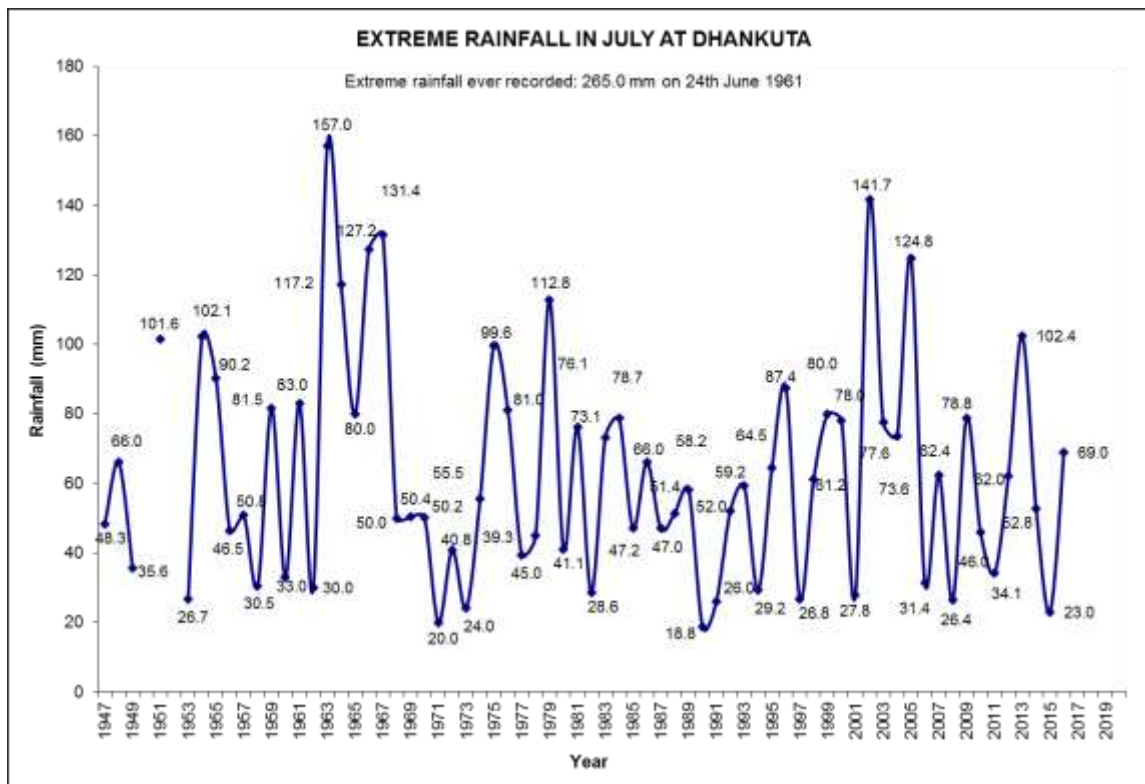
Extreme rainfall ever recorded: 339.5 mm on 23rd JUNE 2000

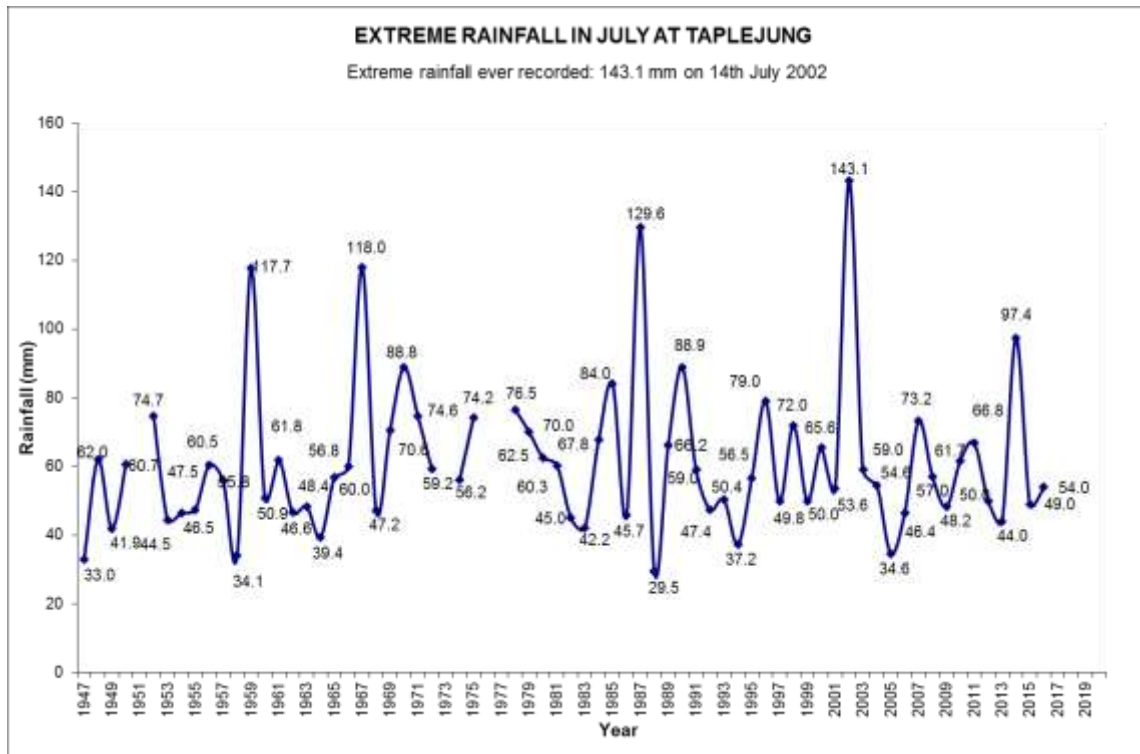
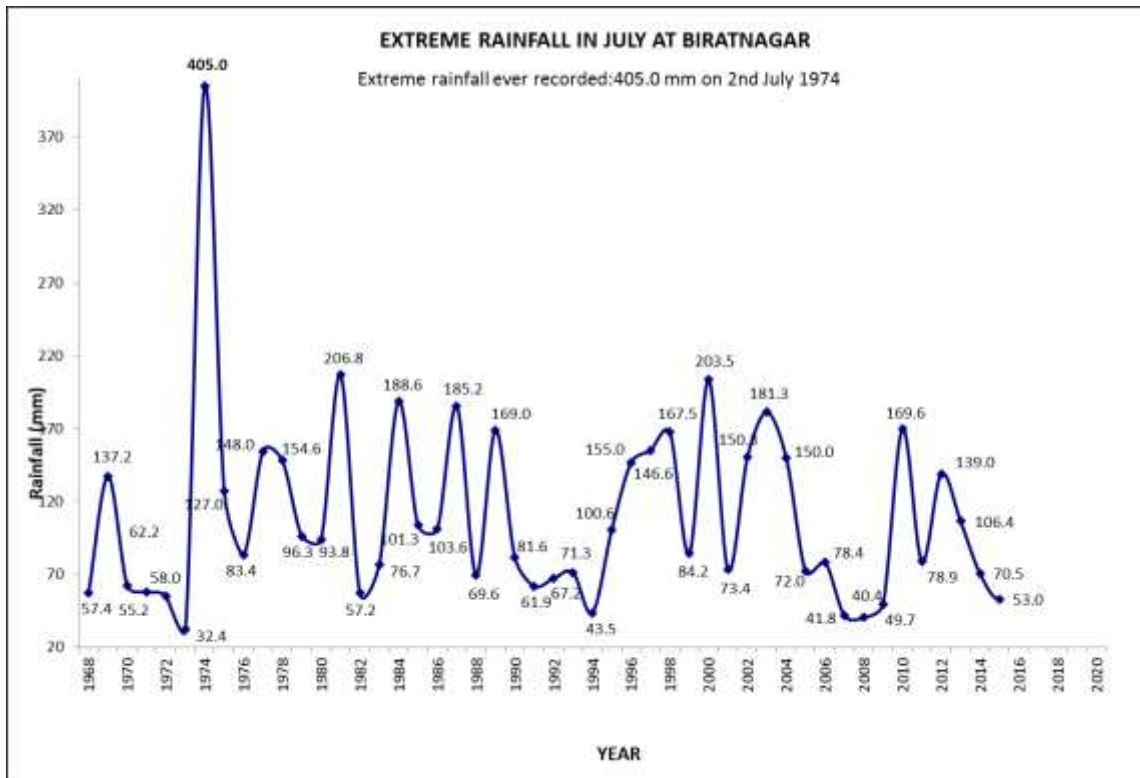


EXTREME RAINFALL IN JULY AT OKHALDHUNGA

Extreme rainfall ever recorded: 170.4 mm on 10th July 2004







NOTE: The Precipitation Normal are not shown in the stations either the normal are not available or the normal are too high than the extremes.



Fig: Map of Nepal showing the synoptic stations

